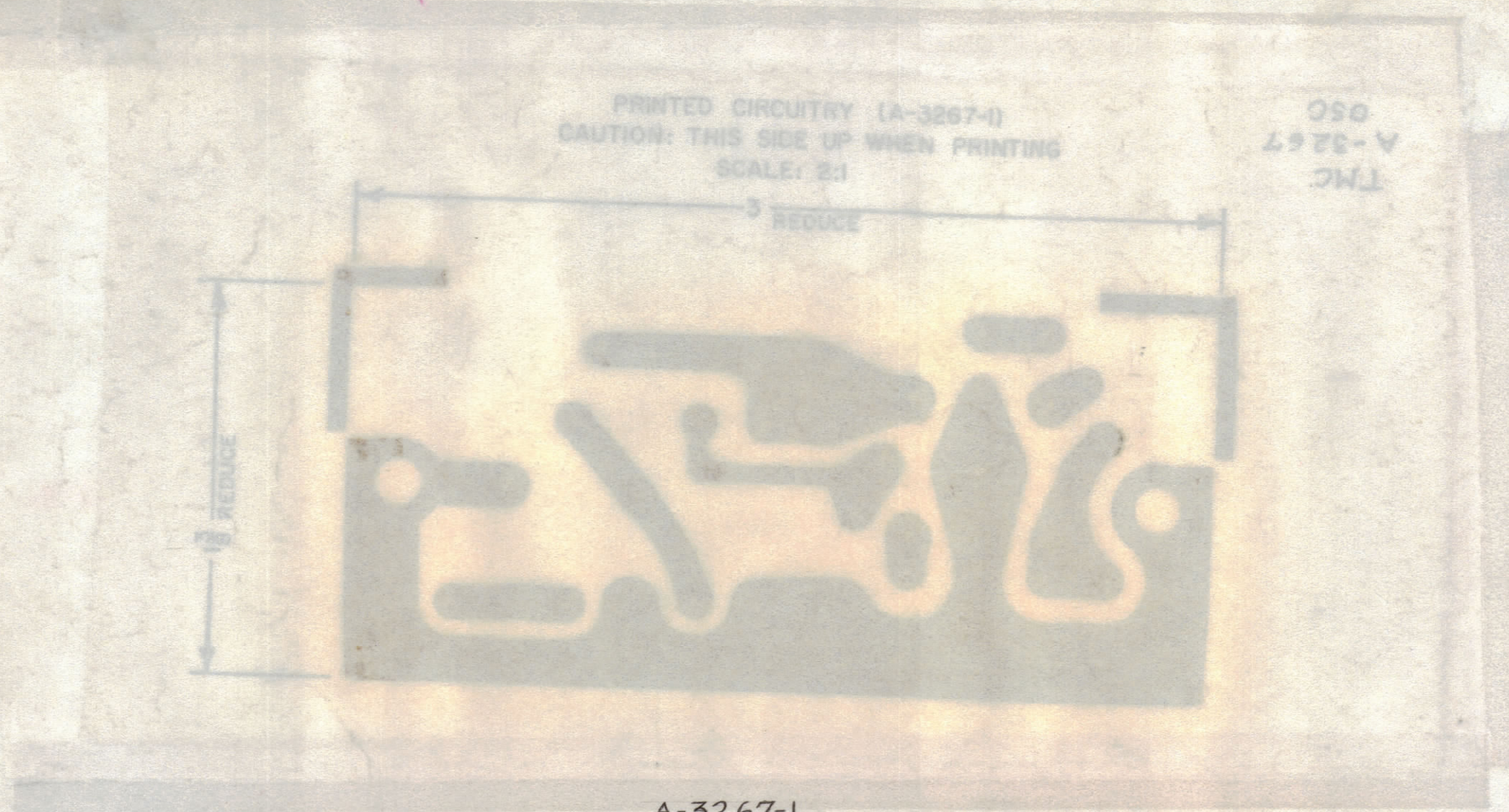


		REVISIONS					
ZONE	SYM	DESCRIPTION	DATE	E.M.N. NO.	DRAFT	CHKD	APPD
C6,F2	A	1" B HOLE ADD. ON MACHINING, ON HOLE LEG. REQ B WAS 5	5.8.64	11372	WB		

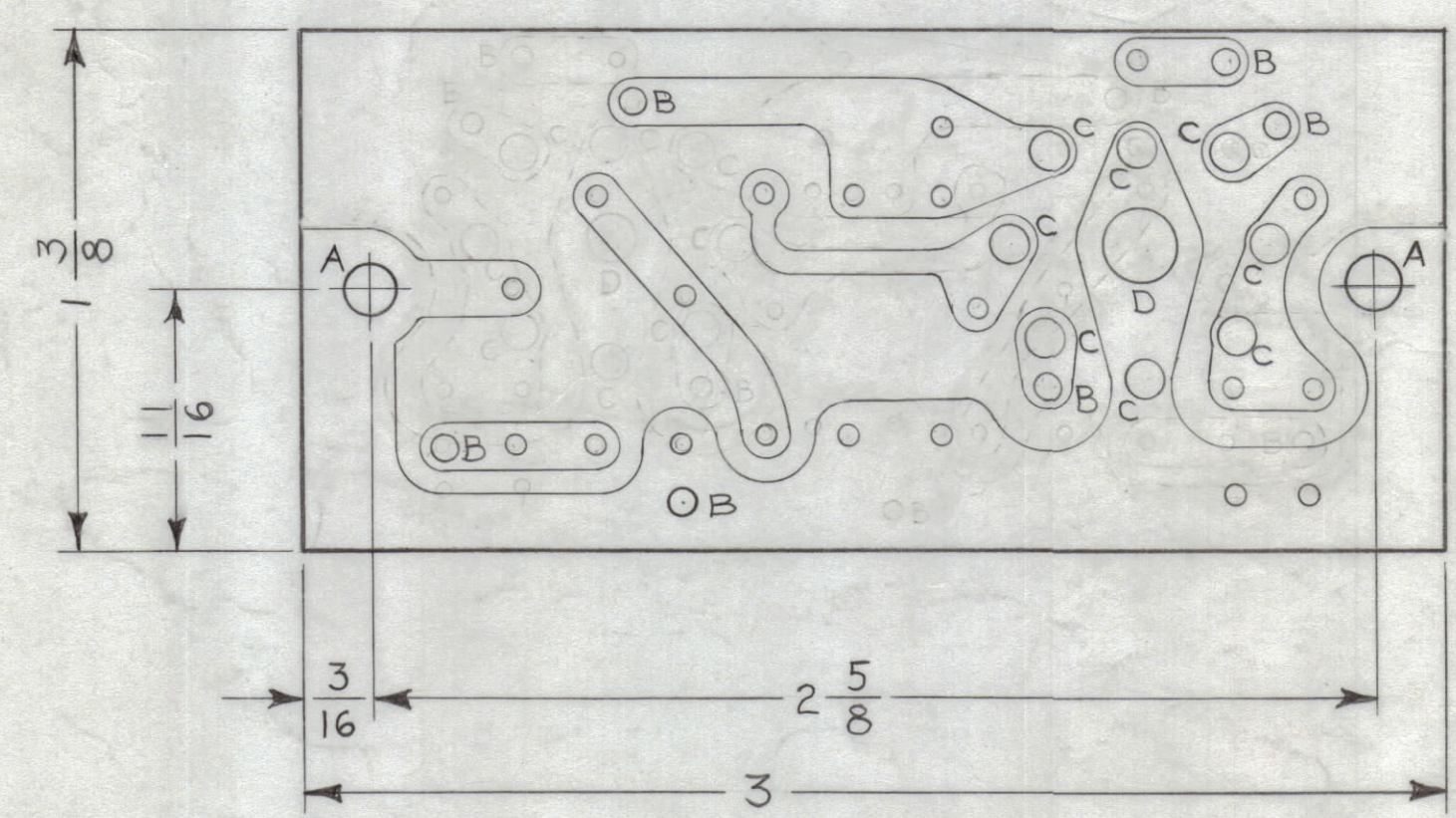


A-3267-1
PRINTED CIRCUITRY
ORIGINAL ARTWORK TO BE REMOVED FROM
PROTECTIVE POCKET WHEN PHOTOGRAPHING

HOLE LEGEND		
HOLE	DESCRIPTION	REQD
A	5/32 DIA	2
B	.078 DIA	6
C	3/32 DIA	8
D	3/16 DIA	1
UN-MARKED	.050 DIA	20

NOTES:

1. HOLES ARE TO BE PLATED THRU & HAVE A MINIMUM COPPER THICKNESS OF .0015 AT ANY POINT WITHIN THE HOLE. THE SOLDER PLATE THICKNESS MUST BE A MINIMUM OF .0008 AS PER TMC SPEC S-735. THE FINISHED DIA. OF THE PLATED HOLE MUST BE A MINIMUM OF THE DESIGNATED HOLE DIA.



A-3267-2
MACHINING
(BOTTOM VIEW SHOWN)

THE ORIGINAL ARTWORK TO BE SUPPLIED BY TMC FOR PHOTOGRAPHING.

REQ'D.	ITEM	PART NUMBER	DESCRIPTION	SYMBOL
M. GELLMAN LIST OF MATERIAL				
MATERIAL		EPOXY G-10 1/16 THK 2 OZ. COPPER CLAD, ONE SIDE		
FINISH		NATURAL~SEMI-GLOSS		
		THE TECHNICAL MATERIEL CORP. MAMARONECK, NEW YORK		
		TITLE PRINTED CIRCUIT BOARD, ASSY (BOTTOM VIEW SHOWN)		
DRAWN	DATE	FINAL APPROVAL	DATE	
Checked	8-5-63			
	DATE			
	11/5/63			
	DATE			
	11-7-63			
DECIMALS	FRACTIONS	TOLERANCES		
.X ± .05	± 1/64	ANGLES		
.XX ± .01	± 0° 30'			
.XXX ± .005				
ELECT. DES.		A-3267 A		
MECH. DES.		SHEET 1 OF 2		
		REV. LTR.		

1	GPR-92	ASS'Y. NO.
QTY./UNIT	MODEL USED ON	
SCALE 2:1	CODE A	
THE CONTENTS OF THIS DRAWING ARE THE EXCLUSIVE PROPERTY OF THE TECHNICAL MATERIEL CORP. ITS UNAUTHORIZED USE OR REPRODUCTION IN WHOLE OR IN PART IS STRICTLY FORBIDDEN.		

NOTES

A-3267 A

