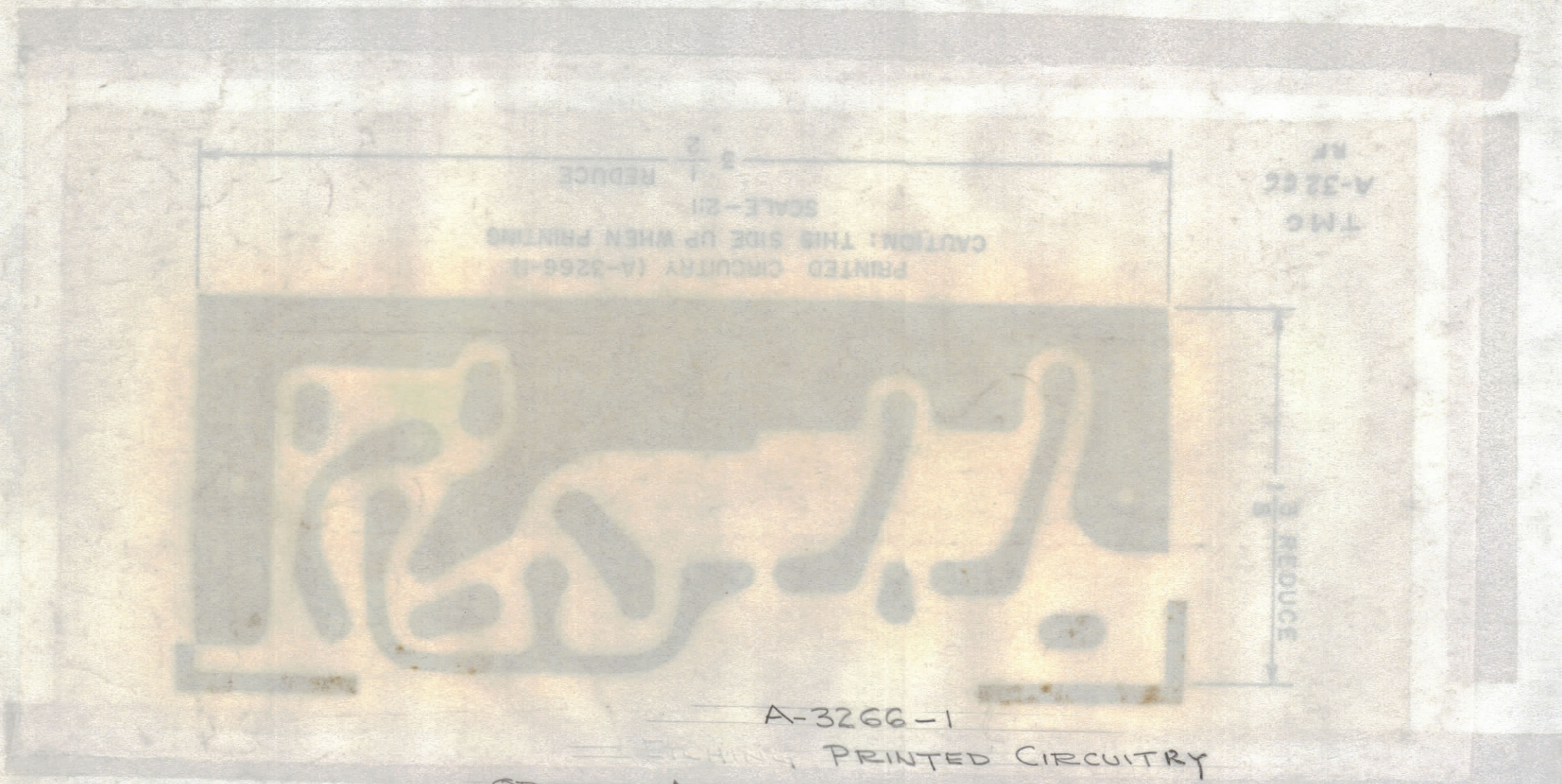


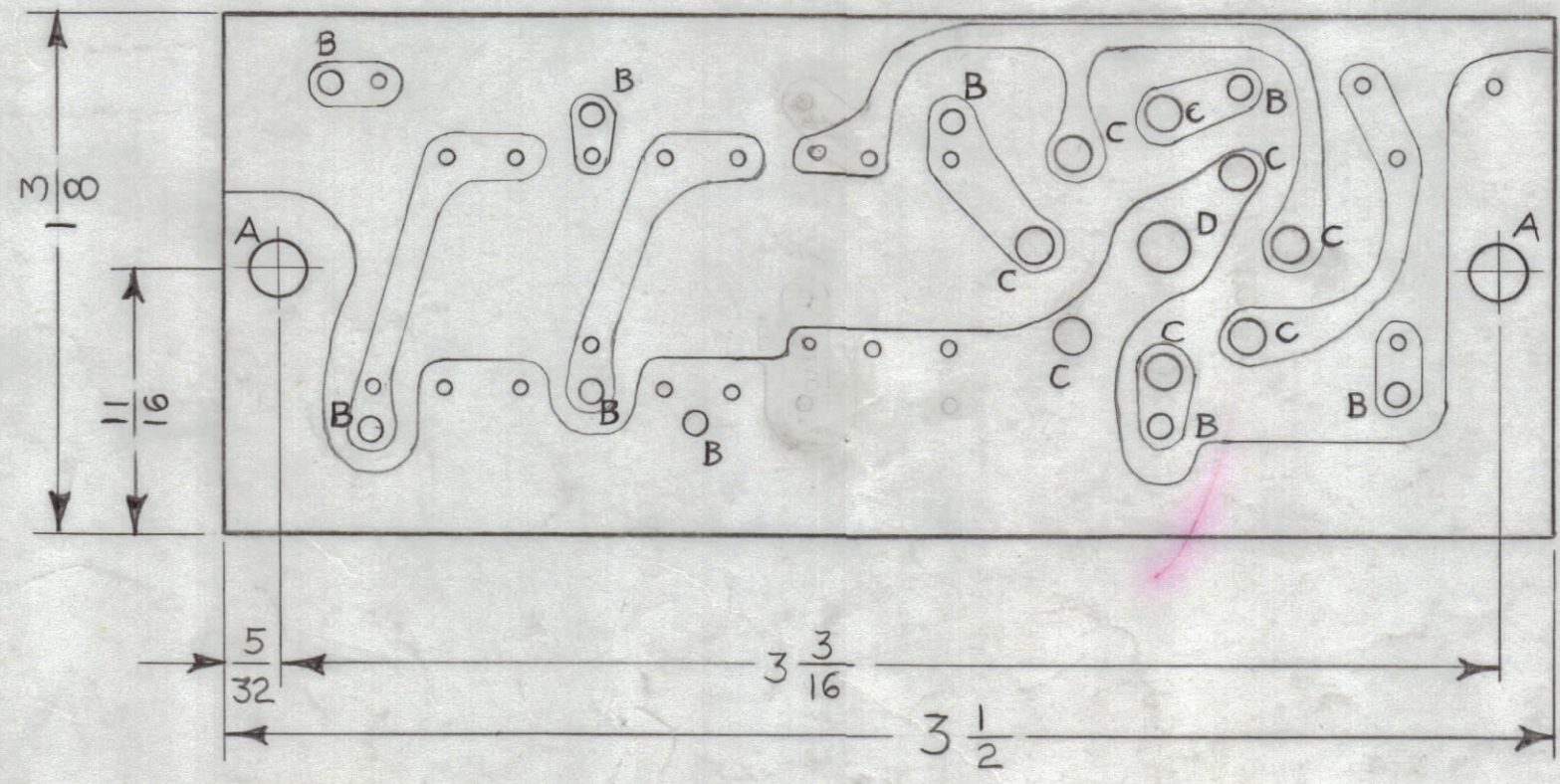
| REVISIONS | | | | | | | |
|-----------|-----|-------------|--------|------------|-------|------|------|
| ZONE | SYM | DESCRIPTION | DATE | E.M.N. NO. | DRAFT | CHKD | APPD |
| A | | SEE SHEET 2 | 3-8-66 | 15845 | HCA | | |



A-3266-1
 PRINTING PRINTED CIRCUITRY
 ORIGINAL ARTWORK TO BE REMOVED FROM
 ART WORK MAT. PROTECTIVE POCKET WHEN PHOTOGRAPHING.

| HOLE LEGEND | | |
|-------------|-------------|------|
| HOLE | DESCRIPTION | REQD |
| A | 5/32 DIA | 2 |
| B | .078 DIA | 9 |
| C | 3/32 DIA | 8 |
| D | 3/16 DIA | 1 |
| UN MARKED | .050 DIA | 22 |

NOTES:
 ALL HOLES ARE TO BE PLATED THRU & HAVE A MINIMUM
 COPPER THICKNESS OF .0015 AT ANY POINT WITHIN
 THE HOLE. THE SOLDER PLATE THICKNESS MUST
 BE A MINIMUM OF .0008 AS PER TMC SPEC S-735.
 THE FINISHED DIA. OF THE PLATED HOLE MUST BE
 A MINIMUM OF THE DESIGNATED HOLE DIA.



A-3266-2
 MACHINING
 (BOTTOM VIEW SHOWN)

THE ORIGINAL ARTWORK TO BE SUPPLIED
 BY TMC FOR PHOTOGRAPHING.

| REQ'D. | ITEM | PART NUMBER | DESCRIPTION | SYMBOL |
|---|------|----------------------------|--|-------------------------------|
| M. GELLMAN LIST OF MATERIAL | | | | |
| MATERIAL EPOXY G-10 1/16 THK. 2 OZ. COPPER CLAD, ONE SIDE | | | THE TECHNICAL MATERIEL CORP. MAMARONECK, NEW YORK | |
| FINISH NATURAL ~ SEMI-GLOSS | | | TITLE PRINTED CIRCUIT BOARD ASSY (BOTTOM VIEW SHOWN) | |
| UNLESS OTHERWISE SPECIFIED DIMENSIONS ARE IN INCHES AND INCLUDE CHEMICALLY APPLIED OR PLATED FINISHES | | DRAWN A. Gellman | DATE 8-5-63 | FINAL APPROVAL [Signature] |
| | | CHECKED [Signature] | DATE 11/5/63 | |
| | | ELECT. DES. [Signature] | DATE 11-7-63 | A-3266 |
| | | MECH. DES. [Signature] | DATE | A |
| | | | SHEET 1 OF 2 | REV. LTR. |

| 1 | GPR-92 | ASS'Y. NO. |
|--------------|---------------|------------|
| Q'TY./UNIT | MODEL USED ON | |
| SCALE 2:1 | CODE A | |

NOTES

THE CONTENTS OF THIS DRAWING ARE THE EXCLUSIVE PROPERTY
 OF THE TECHNICAL MATERIEL CORP. ITS UNAUTHORIZED USE OR
 REPRODUCTION IN WHOLE OR IN PART IS STRICTLY FORBIDDEN.

| DECIMALS | FRACTIONS | TOLERANCES |
|-------------|-----------|------------|
| .X ± .05 | ± 1/64 | |
| .XX ± .01 | ANGLES | ± 0° 30' |
| .XXX ± .005 | | |