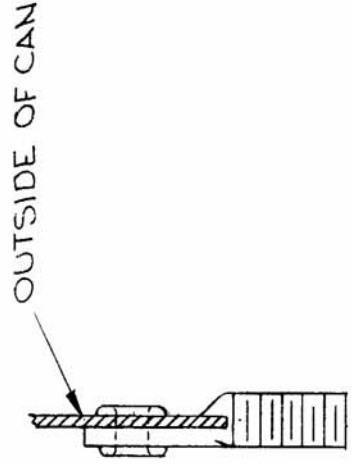
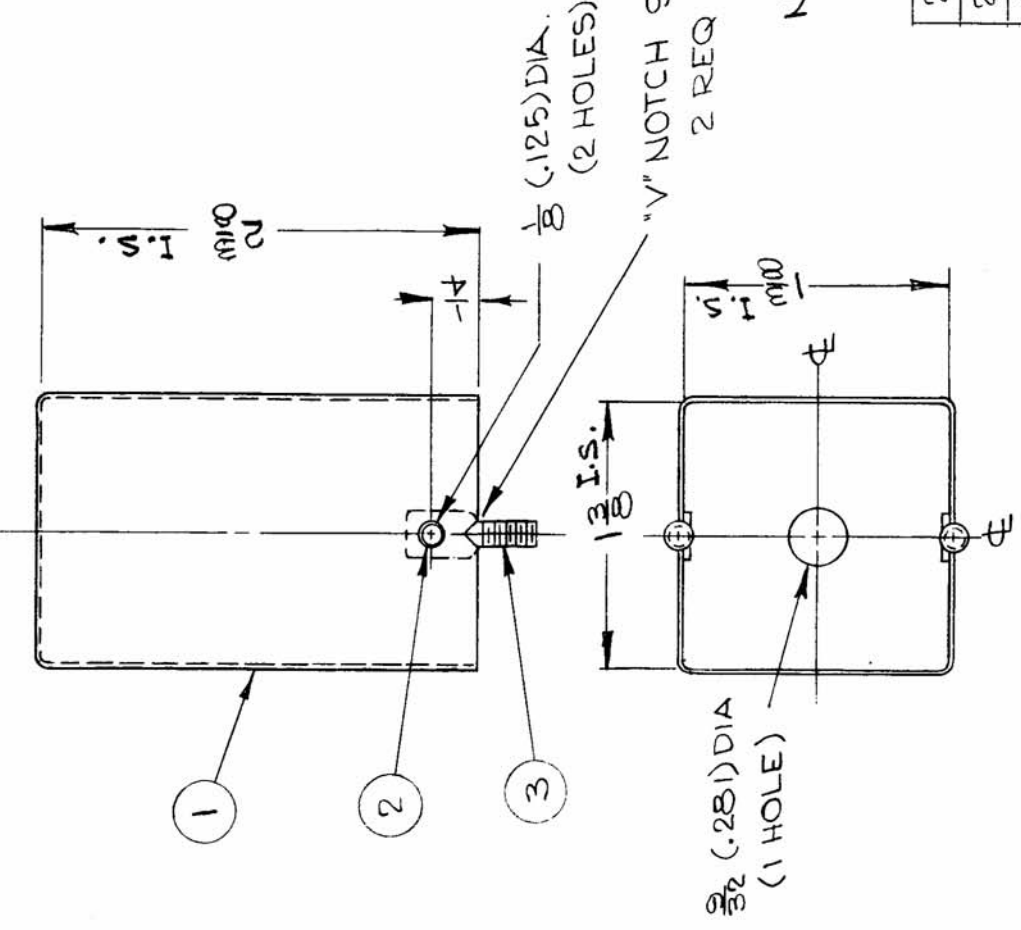


REQ. PER UNIT	USED ON	MODEL	ABS'Y. NO.	DATE
1	GPR-91RXD	A-3252	8-8-63	A-3254 A



LUG DETAIL

NOTE:
MODIFY CAN AS SHOWN.

2	3	SC-107-1	BOLT, SPADE	SYMBOL
2	2	EY-100-1	EYELET	
1	1	BX-102-10	CAN (MODIFIED AS SHOWN)	
REQ. ITEM	PART NO.	R. HAY		DESCRIPTION
STOCK SIZE		THE TECHNICAL MATERIEL CORP. MAMARONECK. NEW YORK		
MATERIAL		I.F. CAN ASSY		
TYPE & TEMPER		HEAT TREAT. SPEC.	DRAWN	CHECKED
FINISH & SPEC. NO.		8-8-63		9/10/63
ELEC. DES. APP.		MECH. DES. APP.		FINAL APPROVAL
				A-3254 A

SYM	DESCRIPTION	DATE	CH. NO.	DRAFTS	CHECKER	ENG. APP.
A	DIM 2-3/8 WAS 2-1/4	12.20.66	17525	WHD	QCB	[Signature]
UNLESS OTHERWISE SPECIFIED DIMENSIONS ARE IN INCHES AND INCLUDE CHEMICALLY APPLIED OR PLATED FINISHES		SCALE		1:1		
DECIMALS X ± .05 XX ± .01 XXX ± .005		TOLERANCES		FRACTIONS ± 1/64 ANGLES ± 0° 30'		