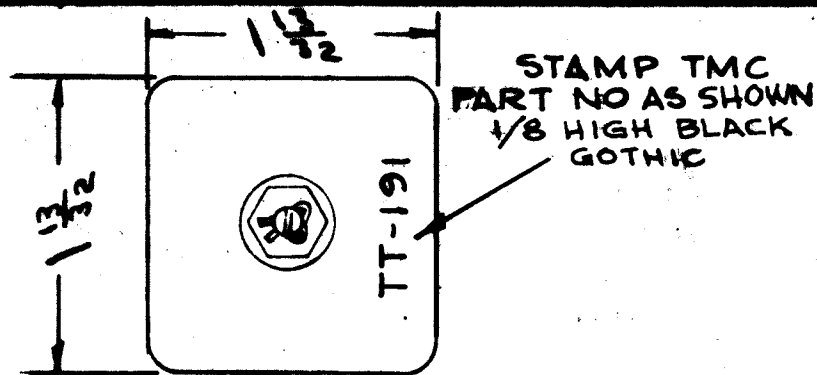


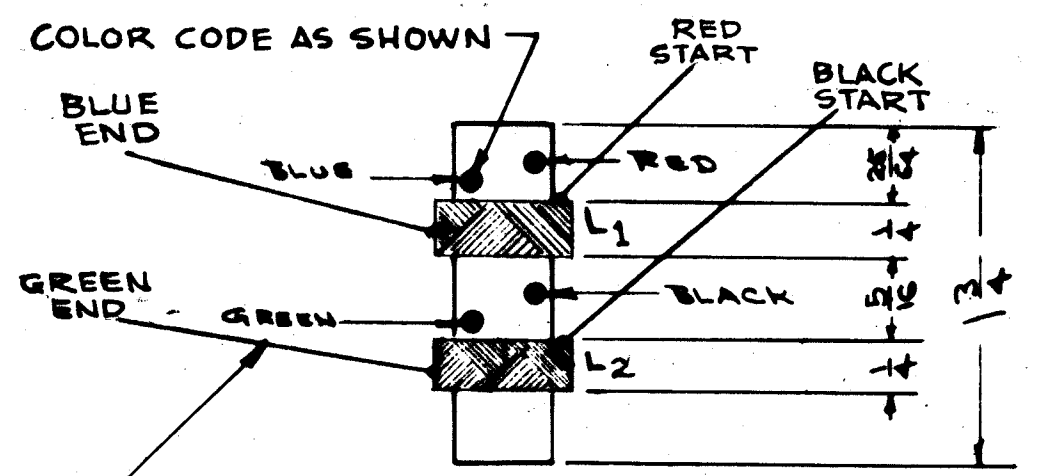
A-3253 B



WINDING MACHINE DATA  
 CAM GEAR 105  
 DRIVER GEAR 69  
 CAM V4

WINDING DATA  
 2 PI - 100 TURNS EACH PI.  
 OF ITEM 2

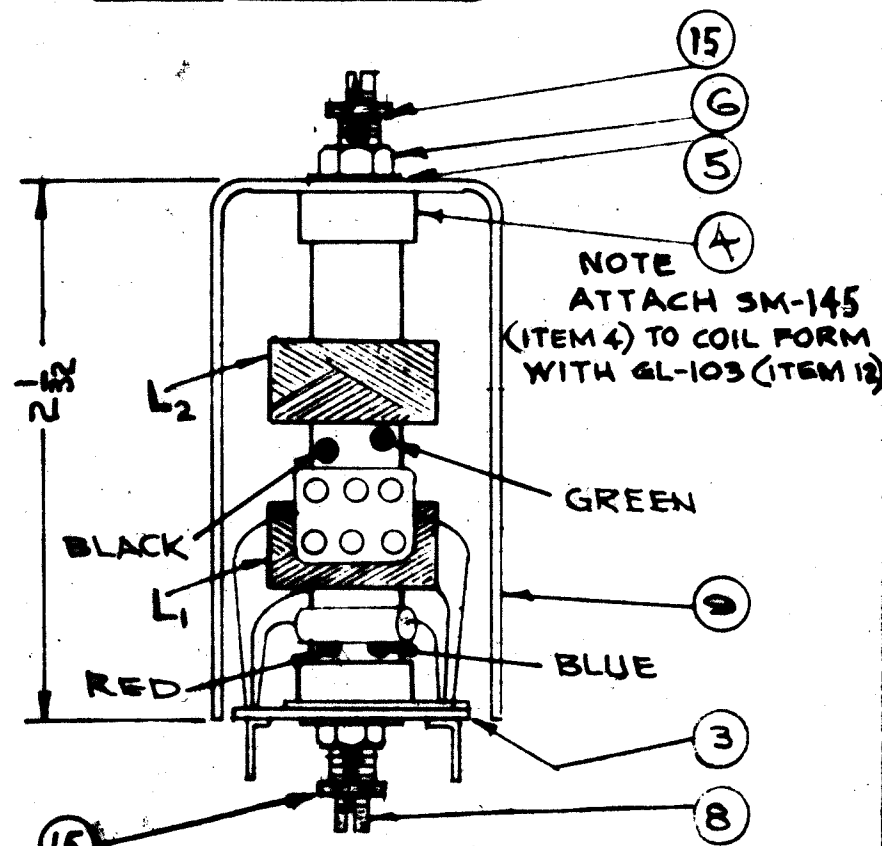
FABRICATION  
 LEADS APPROX. 3" LONG  
 BAKE DRY FOR 1/2 HOUR AT 215°F  
 COAT COILS WITH Q-MAX (GL-102).  
 BAKE FOR 1/2 HOUR AT 215°F.



LEADS TO BE APPROX 2 1/2 LONG

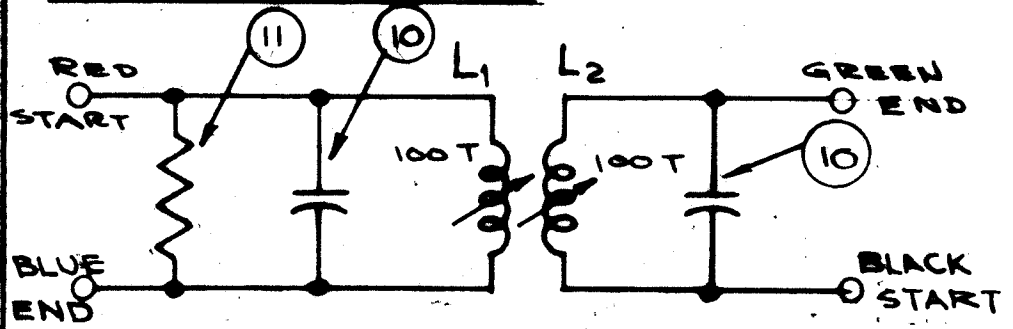
ELECTRICAL TEST DATA (W/O CORE)

L	F	Q	R
95μh (90-100)	790KC	> 75	3.5Ω APPR



NOTE  
 ATTACH SM-145 (ITEM 4) TO COIL FORM WITH GL-103 (ITEM 12)

WIRING DIAGRAM



SYMBOL REF CHART

TMC PART NO.	MODEL USED ON	SYMBOL	ITEM 11	ITEM 10
TT-191	GRP-91RXD	T6	R-41	C49, C51
		T7	R-48	C55, C58

2	15	NYN0632848	NUT, HEX.
X	14	GL-102	ADHESIVE, Q-MAX
X	13	BS-100	SOLDER, SOFT
X	12	GL-103	ADHESIVE, DUCO
1	11	RC20GF563J	RESISTOR, FIXED, COMP
2	10	CM20F10ZG03	CAPACITOR, FIXED, MICA
1	9	A-1023-1	CAN. SUB-ASSY
2	8	CI109-16	CORE
	7	DELETED	
2	6	NT-102	NUT, HEX
2	5	LW125LRN	WASHER, LOCK, INTERNAL
2	4	SM-145	BUSHING
1	3	A-977	TERMINAL ED. SUBASSY
X	2	WI-104-SH K99	WIRE, LITZ
1	1	CF-100	FORM, COIL

B	12-15-66	17466	RME	
A	4-20-65	15893	ME	
ISSUE ITEM	CHANGED FROM	DATE	CH. NO.	DRAFTS
TOLERANCES		SCALE:		
DEC. DIM. ±		MAXIMUM ALLOWABLE TOLERANCES HAVE BEEN DETERMINED AND ANY DEVIATIONS WILL BE CAUSE FOR REJECTION. REMOVE ALL BURRS AND SHARP EDGES		
FRAC. DIM. ± 1/64				
ANGULAR DIM. ±				

REQ. PER UNIT	MODEL	PROJECT NO.	ASSY. NO.	DATE
	GRP-91RXD			B-7-63
USED ON				

THE TECHNICAL MATERIEL CORP. MAMARONECK, NEW YORK			
TT-191 ASSY TRANSFORMER, IF TUNED			
STOCK SIZE	REVISION	DATE	BY
		1/19/63	BP
TYPE & TREAT. SPEC.	DRAWN	CHECKED	FINAL APPROVAL
PART & SPEC. NO.		A-3253 B	