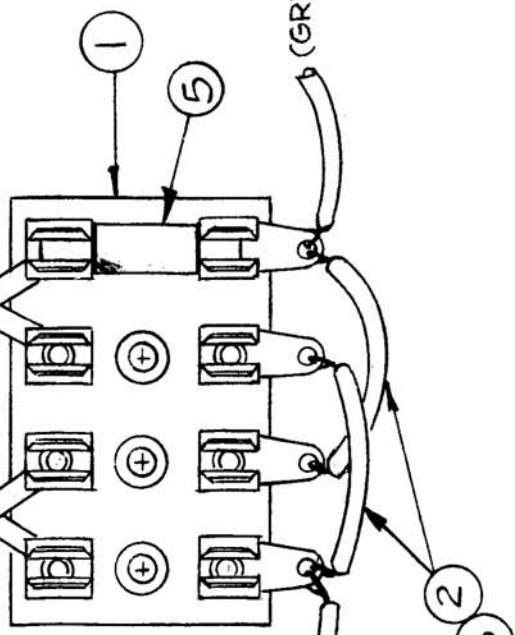


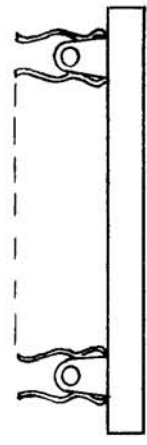
REQ. PER UNIT	USED ON	A-3250 A	
1	ASSY. NO.	LFA-4	
	DATE	12-3-63	

(RED, ITEM (6), P/O CA-791)



— NOTE —  
ALL SLEEVING TO BE 1/2" SHORTER THAN WIRE, BUSS.

(GRN, ITEM (8), P/O CA-791)



4	5	1N1084A	SEMICOND. DEVICE, DIODE	CR3001-4
X	4	BS-100	SOLDER, SOFT	
X	3	PX-104-1-034	INSULATION, SLEEVING	BLK
X	2	WL-100-7	WIRE, BUSS S222	
1	1	CU-138	BLOCK, MTG, POLARIZED	
REQ. ITEM	PART NO.	O. POSE DESCRIPTION SYMBOL		
STOCK SIZE				
MATERIAL				
THE TECHNICAL MATERIEL CORP. MAMARONECK, NEW YORK				
BOARD RECTIFIER, ASSY				
TYPE & TEMPER		HEAT TREAT. SPEC.	DRAWN	CHECKED
FINISH & SPEC. NO.			G.D.L	Final
				FINAL APPR VAL
				A-3250
				MECH. DES. APP.
				A

DATE 2.3.65 13307  
 CHECKER JCB  
 SCALE 1:1

DESCRIPTION IT-5 ADD. TO B/M & PICT.  
 UNLESS OTHERWISE SPECIFIED DIMENSIONS ARE IN INCHES AND INCLUDE CHEMICALLY APPLIED OR PLATED FINISHES  
 TOLERANCES DECIMALS: .XX ± .01, .XXX ± .005  
 FRACTIONS: ± 1/64 ANGLES: ± 0° 30'