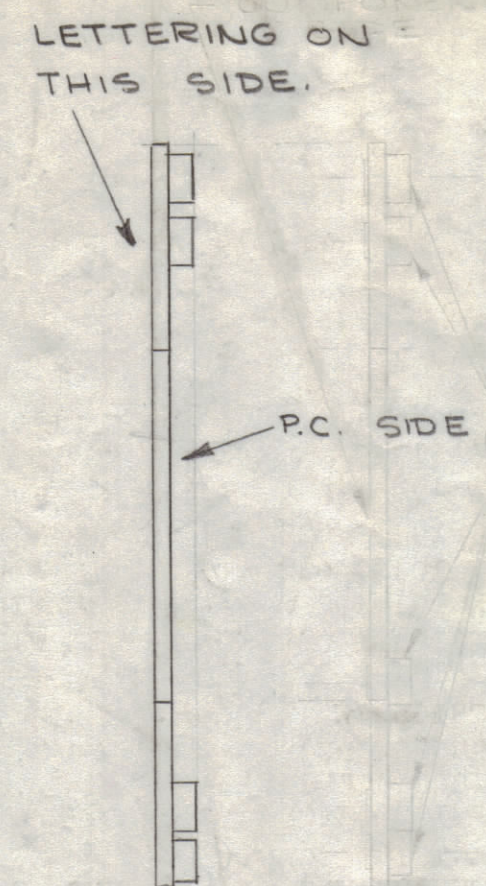
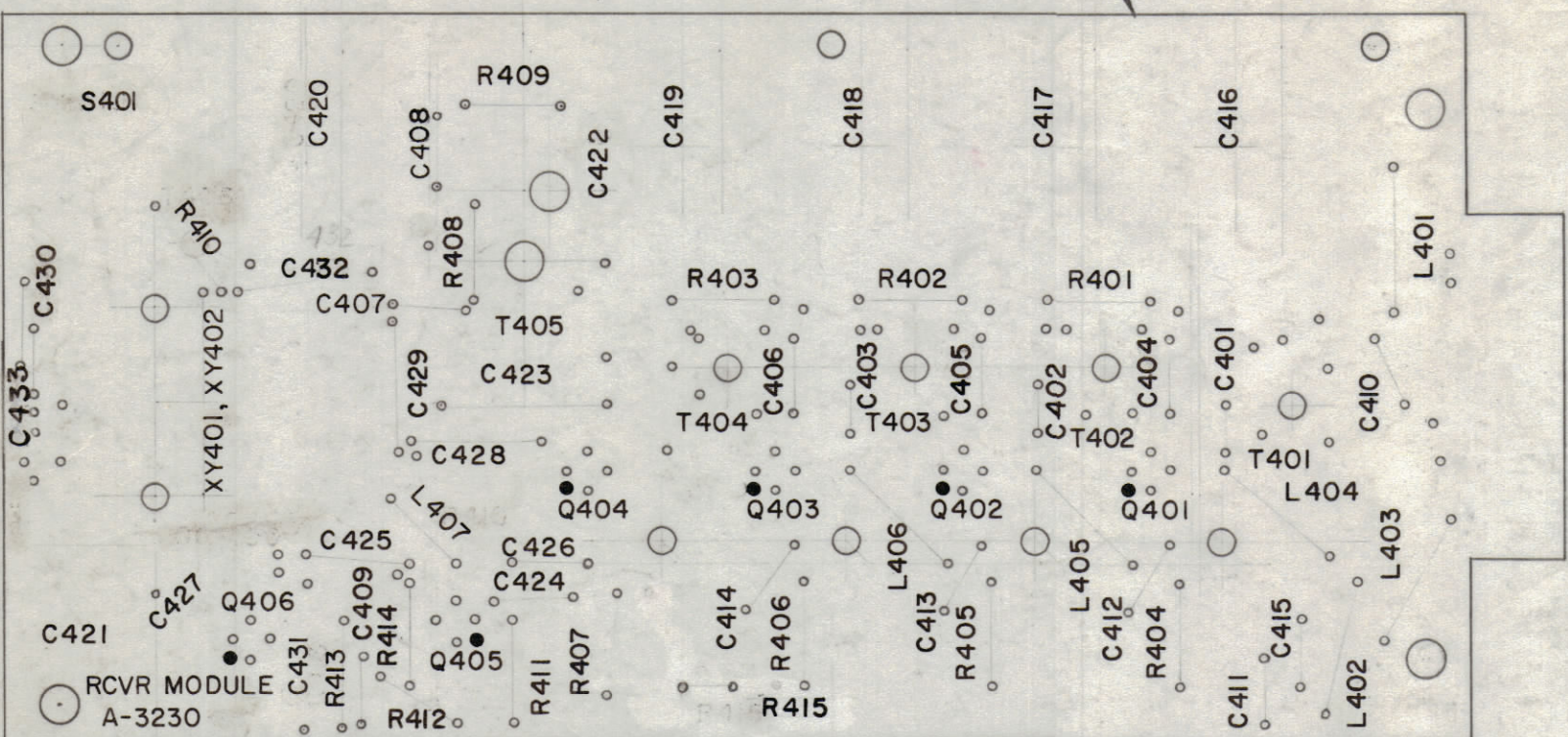


REVISIONS						
ZONE	SYM	DESCRIPTION	DATE	E.M.N. NO.	DRAFT	CHKD
K		IT.33 WAS RC20GF4720, ADDED IT.33 NOTE RELOC. R415 LETTERING.	2-22-67	17837	RME	OK
G	B	ON 11-28-66, R422 WAS C420	11-28-66	11842	AB	
E	C	IT.33 WAS 3 REQ. IT.41 WAS 1 REQ.	8-24-66	11833	AB	
D	D	IT.33 WAS 3 REQ. THIS WAS (2), IT.39 WAS (3), SYN. UPD.	3-22-64	12340	AB	
C	E	IT.25 WAS 3 REQ. THIS WAS (2), IT.29 WAS (3), SYN. UPD.	3-22-64	12340	AB	
B	F	R415 WAS 3 REQ. THIS WAS (2), IT.29 WAS (3), SYN. UPD.	3-22-64	12340	AB	
A	G	R415 WAS 3 REQ. THIS WAS (2), IT.29 WAS (3), SYN. UPD.	3-22-64	12340	AB	
	H	R415 WAS 3 REQ. THIS WAS (2), IT.29 WAS (3), SYN. UPD.	3-22-64	12340	AB	
	I	R415 WAS 3 REQ. THIS WAS (2), IT.29 WAS (3), SYN. UPD.	3-22-64	12340	AB	
	J	R415 WAS 3 REQ. THIS WAS (2), IT.29 WAS (3), SYN. UPD.	3-22-64	12340	AB	



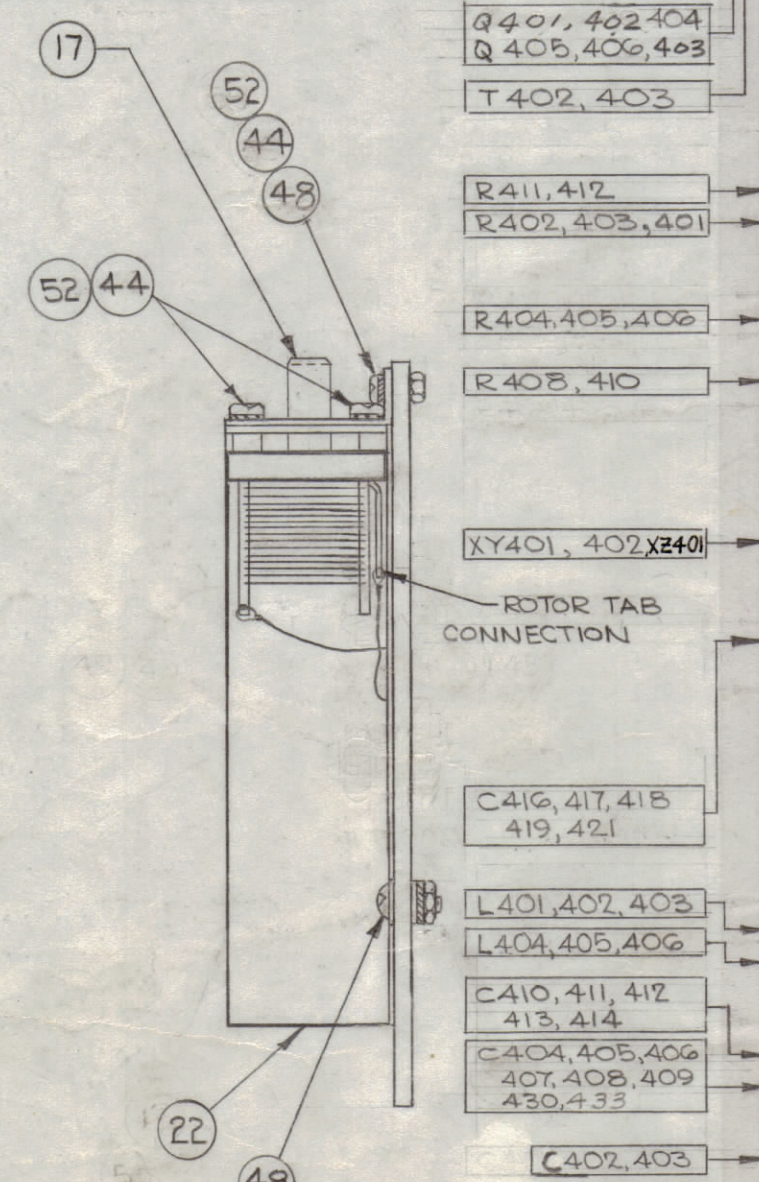
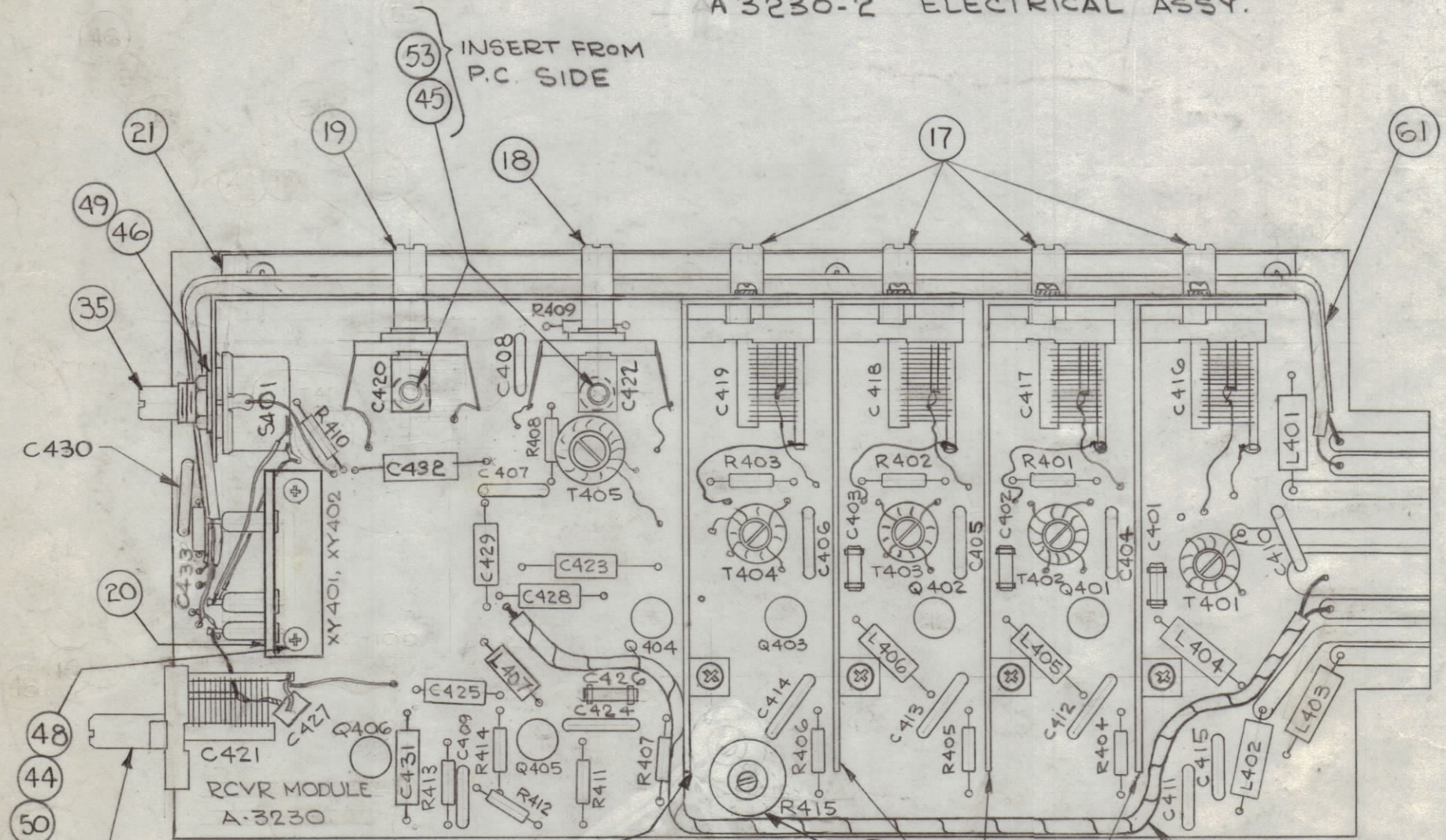
A 3230-1 MARKING

- ~ UNLESS OTHERWISE SPECIFIED ~
- 1- ALL LETTERING TO BE 3/32 WHITE GOTHIC
 - 2- MARKING PROCESS: PER TMC SPEC. 5727 LOCATE APPROX. AS SHOWN.
 - 3- ALL DOTS TO BE 1/16 DIA.

~ ASSEMBLY NOTICE ~

1. TO MOUNT COMPONENTS INSERT LEAD THRU PLATED THRU HOLES AND BEND ABOUT 1/8 OF LEAD OVER COPPER FOIL AS SHOWN.
2. APPLY HEAT & SOLDER TO LEAD & FOIL - CAUTION - TOO MUCH HEAT WILL CAUSE FOIL TO SEPARATE FROM THE BOARD.
3. CLEAN AND INSPECT AS PER 5676.

A 3230-2 ELECTRICAL ASSY.



REQ'D.	ITEM	PART NUMBER	DESCRIPTION	SYMBOL
1/4"	66	PX370-3-7	INSULATION, SLV9, TEFLON	
1	65	CC20CH050C	CAP, FXD, CER.	C401
	64	DELETED		
2	63	FW04HBN	WASHER, FLAT	
1	62	CA-808-1	CABLE ASS'Y, SHIELDED, HI-TEMP	W401
1	61	CA-418-8	CABLE ASS'Y, RF	W402
0-02	60	WL-100-8	WIRE, BUSS, SIZE 24	
0-3	59	PX-104-7-022	SLEEVING, SIZE 24	GRAY
0-2	58	PX-104-6-022		BLU
0-2	57	PX-104-4-022		GRN
0-2	56	PX-104-3-022		RED
0-2	55	PX-104-2-022	SLEEVING, SIZE 24	YEL
X	54	BS-100	SOLDER, SOFT	
2	53	SCBP0632BN4	SCREW MACHINE	
15	52	SCBP0440BN4	SCREW, MACHINE	
5	51	SC-143-0440B10	SCREW, MACHINE, NYLON	
2	50	SCBP0440BNG	SCREW, MACHINE,	
1	49	NTH3732BN18	NUT, HEX	
9	48	NTH0440BN6	NUT, HEX	
10	47	NT-137-0440	NUT, HEX, NYLON	
1	46	LW137MRN	WASHER, LOCK, INT.	
2	45	LW106MRN	WASHER, LOCK, EXT.	
17	44	LWE04MRN	WASHER, LOCK, EXT.	
	43	DELETED		
10	42	FW-101-1	WASHER, FLAT, NYLON	
	41	DELETED		
6	40	TX109	TRANSISTOR	
1	39	TZ-139	TRANSFORMER, RF	T404
2	38	TZ-138		
1	37	TZ-137		T401
1	36	TZ-127	TRANSFORMER, RF	T405
1	35	SW-192-12NSJ	SWITCH, ROTARY	S401
	34	DELETED		
1	33	RV111U502A	RESISTOR, VARIABLE, COMPOSITION	R415
1	32	RC20GF471K		R409
2	31	RC20GF392J		
3	30	RC20GF822J		
1	29	RC20GF222J		R414
1	28	RC20GF470J		R413
3	27	RC20GF122J		
1	26	RC20GF103J		R407
2	25	RC20GF102J	RESISTOR, FIXED, COMPOSITION	
6	24	PX-829-1	PAD, TRANSISTOR MTG.	
1	23	PC-100-3	MECHANICAL ASSY, P.C. BOARD	
4	22	MS-3380	SHIELD, R.F.	
1	21	MS-3372	BRACKET, CAPACITOR MTG.	
1	20	LD-1342/MS-3414	BRACKET, XTAL/ OVEN SOCKET	
1	19	CV-113-11	CAPACITOR, VARIABLE, MICA	C420
1	18	CV-113-10	CAPACITOR, VARIABLE, MICA	C422
5	17	CT-103-1	CAPACITOR, VARIABLE, AIR	
1	16	CM20B561J	CAPACITOR, FIXED, MICA	C429
1	15	CM15F241J03		C431
1	14	CM15F331J03		C428
1	13	CM15C059J031Y		C427
1	12	CM100-10		C423
1	11	CM15F111J03		C432
1	10	CM15F101J03	CAPACITOR, FIXED, MICA	C425
1	9	CL-270-0.68	COIL, RF, FIXED, MOLDED	L407
3	8	CL-240-100	COIL, RF, FIXED	
3	7	CL-240-22	COIL, RF, FIXED	
1	6	CC-107UL330F	CAPACITOR, FIXED, CERAMIC	C426
1	5	CC-100-25	CAPACITOR, FIXED, CERAMIC, DISC	C424
5	4	CC-100-33		
8	3	CC-100-16		
1	2	CC-100-15	CAPACITOR, FIXED, CERAMIC, DISC	C415
2	1	CC20CK2R2C	CAPACITOR, FIXED, CERAMIC	

PALMER LIST OF MATERIAL

MATERIAL THE TECHNICAL MATERIEL CORP. MAMARONECK, NEW YORK

FINISH TITLE PRINTED CIRCUIT BOARD ASSY RECEIVER MODULE, 16-32 MC

UNLESS OTHERWISE SPECIFIED DIMENSIONS ARE IN INCHES AND INCLUDE CHEMICALLY APPLIED OR PLATED FINISHES

DECIMALS: .X ± .05, .XX ± .01, .XXX ± .005

TOLERANCES: FRACTIONS: ± 1/64, ANGLES: ± 0° 30'

DRAWN: J. Davis DATE: 5-2-63

CHECKED: J. Davis DATE: 11/9/63

ELECT. DES.: W.A. Palmer DATE: 11/11/63

MECH. DES.: R. K. H. DATE: 1-16-64

FINAL APPROVAL: B.P. DATE: [blank]

A 3230

REV. LTR. [blank]

Q'TY/UNIT	MODEL USED ON	ASS'Y. NO.
1	TTR-4	A-2747
SCALE	CODE	
DO NOT SCALE	A	

THE CONTENTS OF THIS DRAWING ARE THE EXCLUSIVE PROPERTY OF THE TECHNICAL MATERIEL CORP. ITS UNAUTHORIZED USE OR REPRODUCTION IN WHOLE OR IN PART IS STRICTLY FORBIDDEN.

MOUNTING DETAIL FOR SYMBOLS T401 THRU T405

NOTES

C421 DETAIL