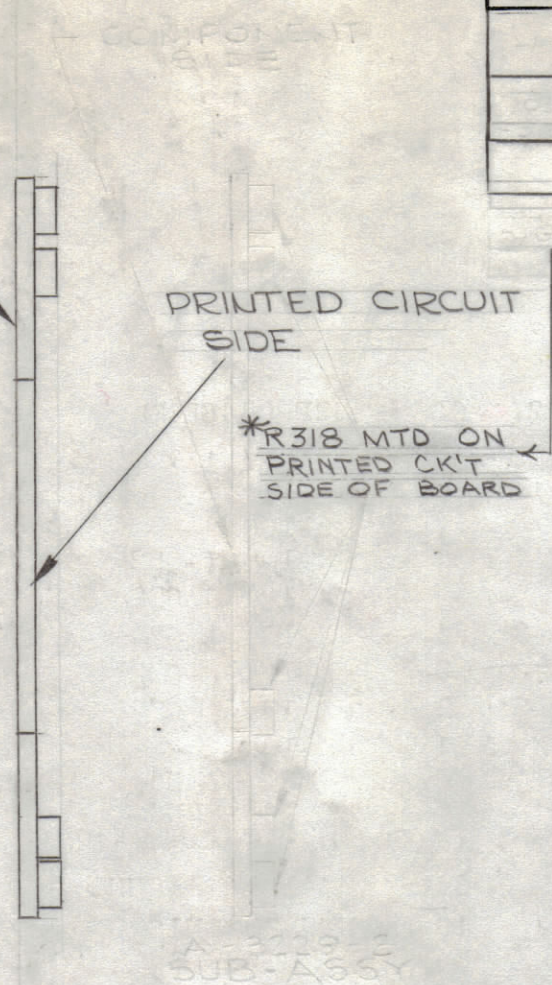
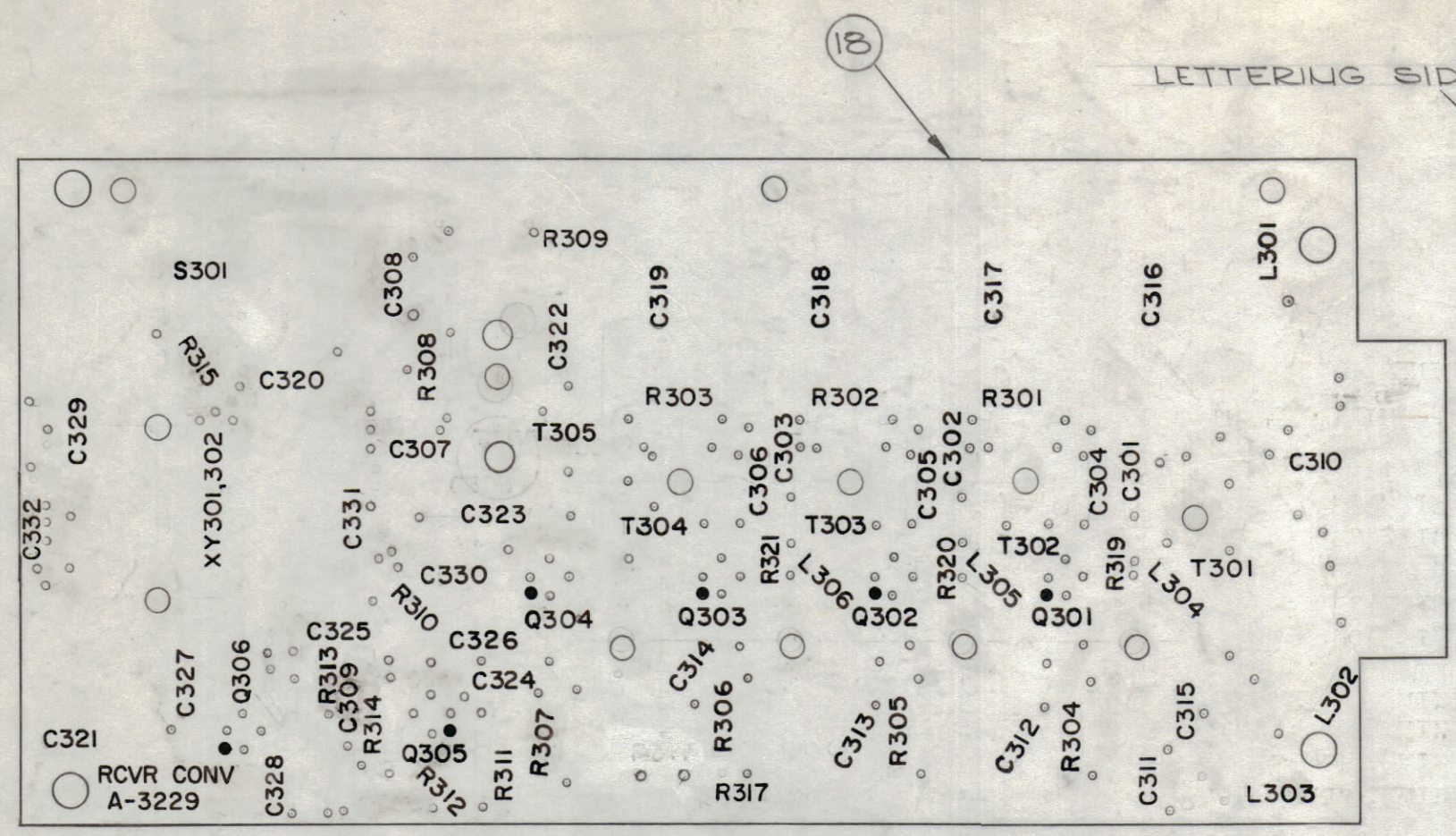


REVISIONS							
ZONE	SYM	DESCRIPTION	DATE	E.M.N. NO.	DRAFT	CHKD	APPD
F		COMPLETELY REVISED B.U. ; ADDED ITEMS 62, 63; ADDED IT. 62 TO ELECT. ASSY.	1/6/66	16491	JL	<i>[Signature]</i>	<i>[Signature]</i>
G		ADDED R318 TO R321. ADDED IT 64. ADDED *R318 NOTE. ADDED MTG. DETAIL FOR C303 & R321	10/6/66	16997	RME	<i>[Signature]</i>	
H		IT. 28 WAS RC20GF472J, RELOC R317 LETTERING ADDED NOTE FOR IT. 28	2-23-67	17837	RME	<i>[Signature]</i>	



A 3229-1 LETTERING

- ~ UNLESS OTHERWISE SPECIFIED ~
- ALL LETTERING TO BE 3/32 WHITE GOTHIC
  - MARKING PROCESS: PER TMC SPEC. 5727 LOCATE APPROX AS SHOWN
  - ALL DOTS TO BE 1/16 DIA.

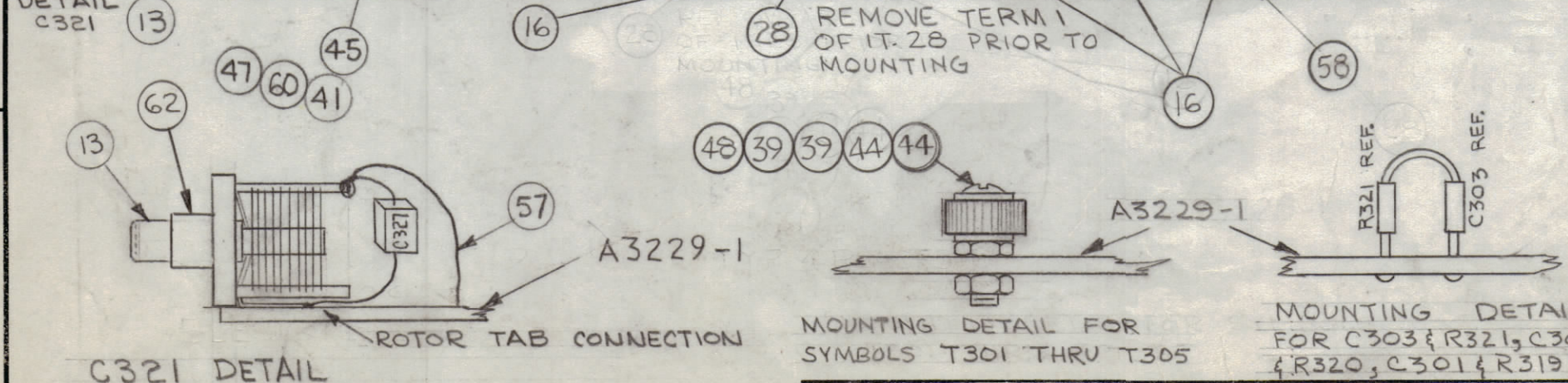
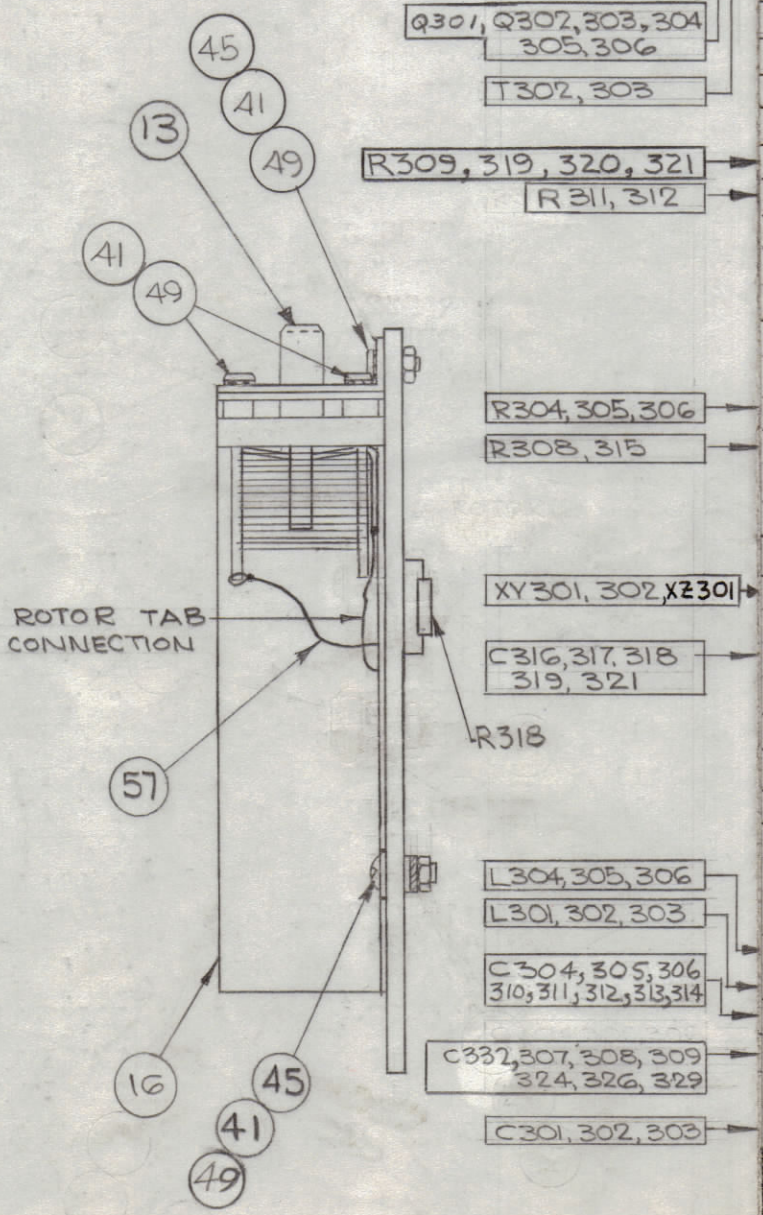
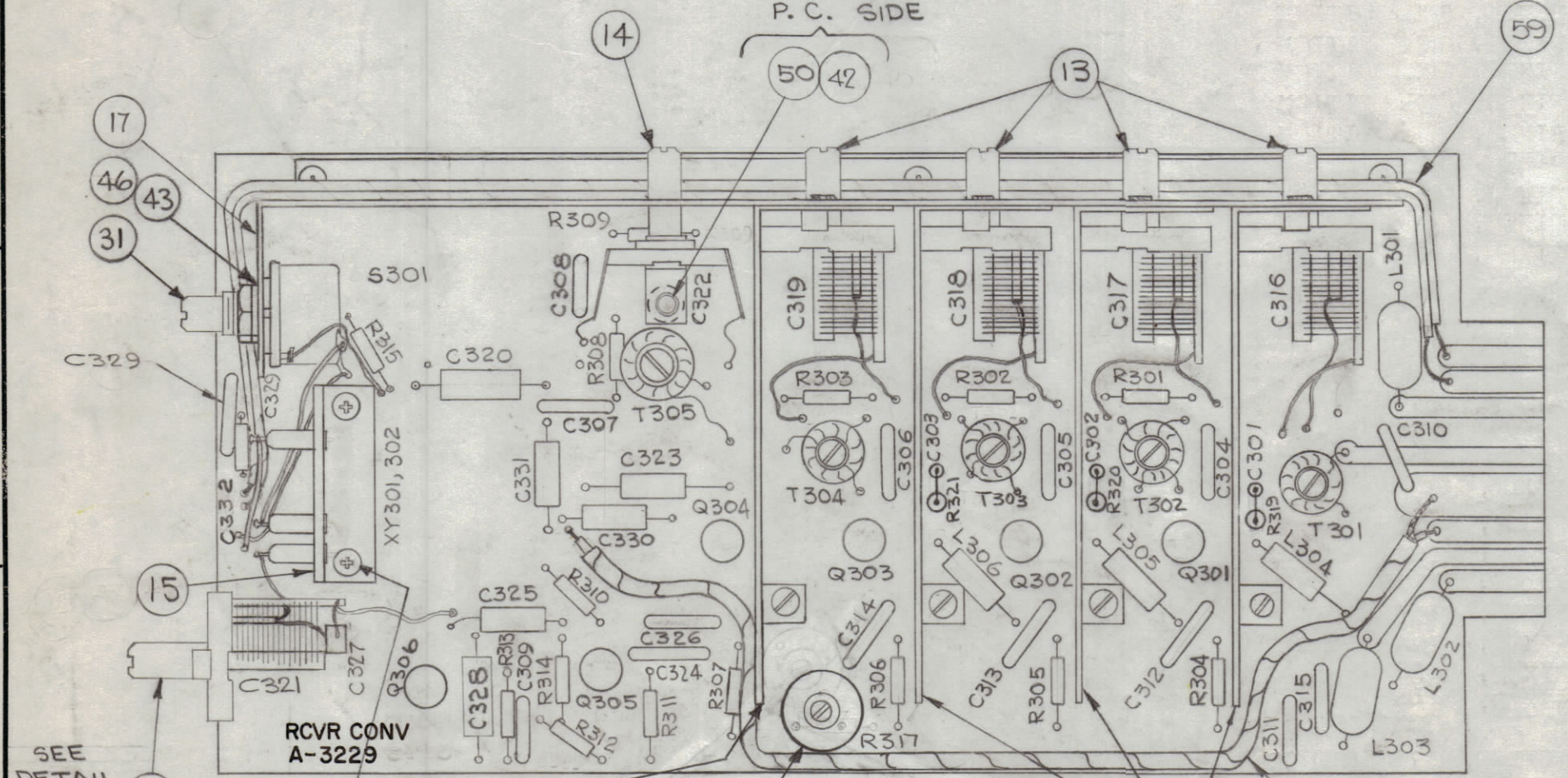
~ ASSEMBLY NOTICE ~

- TO MOUNT COMPONENTS INSERT LEAD THRU PLATED THRU HOLES AND BEND ABOUT 1/16 OF LEAD OVER COPPER FOIL AS SHOWN
- APPLY HEAT & SOLDER TO LEAD & FOIL - CAUTION - TOO MUCH HEAT WILL CAUSE FOIL TO SEPARATE FROM THE BOARD.
- CLEAN AND INSPECT AS PER S 676.

QTY	SYM	DESCRIPTION	SYMBOL
1	64	RC20GF473J * RESISTOR, FIXED, COMP.	R318
3	63	RC20GF103J RESISTOR, FIXED, COMP	R301,2,3
1/4"	62	PX370-3-7 INSULATION, SLVG., TEFLON	
1	61	CM15F241J03 CAPACITOR, FIXED, MICA	C328
2	60	FW04HBN WASHER, FLAT	
1	59	CA-808-1 CABLE ASSY, SHIELDED, HI-TEMP	W301
1	58	CA-418-8 CABLE ASSY, RF	W302
1-02	57	WL-100-8 WIRE, BUSS, SIZE 24	
0-3	56	PX-104-7-022 SLEEVING, SIZE 24	GRAY
0-2	55	PX-104-6-022 SLEEVING, SIZE 24	BLUE
0-2	54	PX-104-4-022 SLEEVING, SIZE 24	GREEN
0-2	53	PX-104-3-022 SLEEVING, SIZE 24	RED
0-2	52	PX-104-2-022 SLEEVING, SIZE 24	YEL.
X	51	BS-100 SOLDER, SOFT	
1	50	SCBP0632BN4 SCREW, MACHINE	
15	49	SCBP0440BN4 SCREW, MACHINE	
5	48	SC-143-0440B10 SCREW, MACHINE, NYLON	
2	47	SCBP0440BN5 SCREW, MACHINE,	
1	46	NTH3732BN18 NUT, HEX	
9	45	NTH0440BN6 NUT, HEX	
10	44	NT-137-0440 NUT, HEX, NYLON	
1	43	LWI37MRN WASHER, LOCK, INT.	
1	42	LWI06MRN WASHER, LOCK, INT.	
17	41	LWE04MRN WASHER, LOCK, EXT.	
	40		
10	39	FW-101-1 WASHER, FLAT, NYLON	
6	38	PX-829-1 PAD, TRANSISTOR MTG.	
	37	DELETED	
6	36	TX109 TRANSISTOR	
1	35	TZ-136 TRANSFORMER, RF	T304
2	34	TZ-135 TRANSFORMER, RF	
1	33	TZ-134 TRANSFORMER, RF	T301
1	32	TZ-127 TRANSFORMER, RF	T305
1	31	SW-192-12NSJ SWITCH, ROTARY	S301
1	30	RC20GF680J RESISTOR, FIXED, COMPOSITION	R310
	29	DELETED	
1	28	RV111U502A RESISTOR, VARIABLE, COMPOSITION	R317
4	27	RC20GF471J RESISTOR, FIXED, COMPOSITION	
2	26	RC20GF392J RESISTOR, FIXED, COMPOSITION	
	25	DELETED	
	24	DELETED	
1	23	RC20GF222J RESISTOR, FIXED, COMPOSITION	R314
1	22	RC20GF470J RESISTOR, FIXED, COMPOSITION	R313
1	21	RC20GF123J RESISTOR, FIXED, COMPOSITION	R307
3	20	RC20GF122J RESISTOR, FIXED, COMPOSITION	
2	19	RC20GF102J RESISTOR, FIXED, COMPOSITION	
1	18	PC-100-3 MECH ASSY, P.C. BOARD	
1	17	MS-3372 BRACKET, CAPACITOR MTG.	
4	16	MS-3380 SHIELD, RF	
1	15	LD-1342/MS-3414 BRACKET, XTAL/OVEN SOCKET	
1	14	CV-113-10 CAPACITOR, VARIABLE, MICA	C322
5	13	CT-103-1 CAPACITOR, VARIABLE, AIR	
	13	DELETED	
1	12	CM100-10 CAPACITOR FIXED, MICA	C323
1	11	CM15F331J03 CAPACITOR FIXED, MICA	C330
1	10	CM15F111J03 CAPACITOR FIXED, MICA	C320
1	9	CM15F101J03 CAPACITOR FIXED, MICA	C325
1	8	CM15C050J03YV CAPACITOR FIXED, MICA	C327
1	7	CM20B681J CAPACITOR FIXED, MICA	C331
3	6	CL-240-47 COIL, RF, FIXED	
3	5	CL-140-3 COIL, RF, FIXED	
8	4	CC-100-33 CAPACITOR, FIXED, CERAMIC, DISC	
7	3	CC-100-16 CAPACITOR, FIXED, CERAMIC, DISC	
1	2	CC-100-15 CAPACITOR, FIXED, CERAMIC, DISC	C315
3	1	CC20CK2R2C CAPACITOR, FIXED, CERAMIC	

A 3229-2 ELECT. ASSY.

INSERT FROM P.C. SIDE



REMOVE TERM 1 OF IT. 28 PRIOR TO MOUNTING

MOUNTING DETAIL FOR SYMBOLS T301 THRU T305

MOUNTING DETAIL FOR C303 & R321, C302 & R320, C301 & R319

NOTES

Q'TY./UNIT	MODEL USED ON	ASSY. NO.
1	TTR-3	A-2745

SCALE DO NOT SCALE CODE A

THE CONTENTS OF THIS DRAWING ARE THE EXCLUSIVE PROPERTY OF THE TECHNICAL MATERIEL CORP. ITS UNAUTHORIZED USE OR REPRODUCTION IN WHOLE OR IN PART IS STRICTLY FORBIDDEN.

PALMER LIST OF MATERIAL

MATERIAL: \_\_\_\_\_

FINISH: \_\_\_\_\_

THE TECHNICAL MATERIEL CORP. MAMARONECK, NEW YORK

TITLE: PRINTED CIRCUIT BOARD ASSY RECEIVER MODULE 8-16 MC

DRAWN: *[Signature]* DATE: 1-3-63 FINAL APPROVAL: *[Signature]* DATE: \_\_\_\_\_

CHECKED: *[Signature]* DATE: 1/13/63

ELECT. DES: *[Signature]* DATE: 1/12/63

MECH. DES: *[Signature]* DATE: 1-16-64

REV. L.T.A.