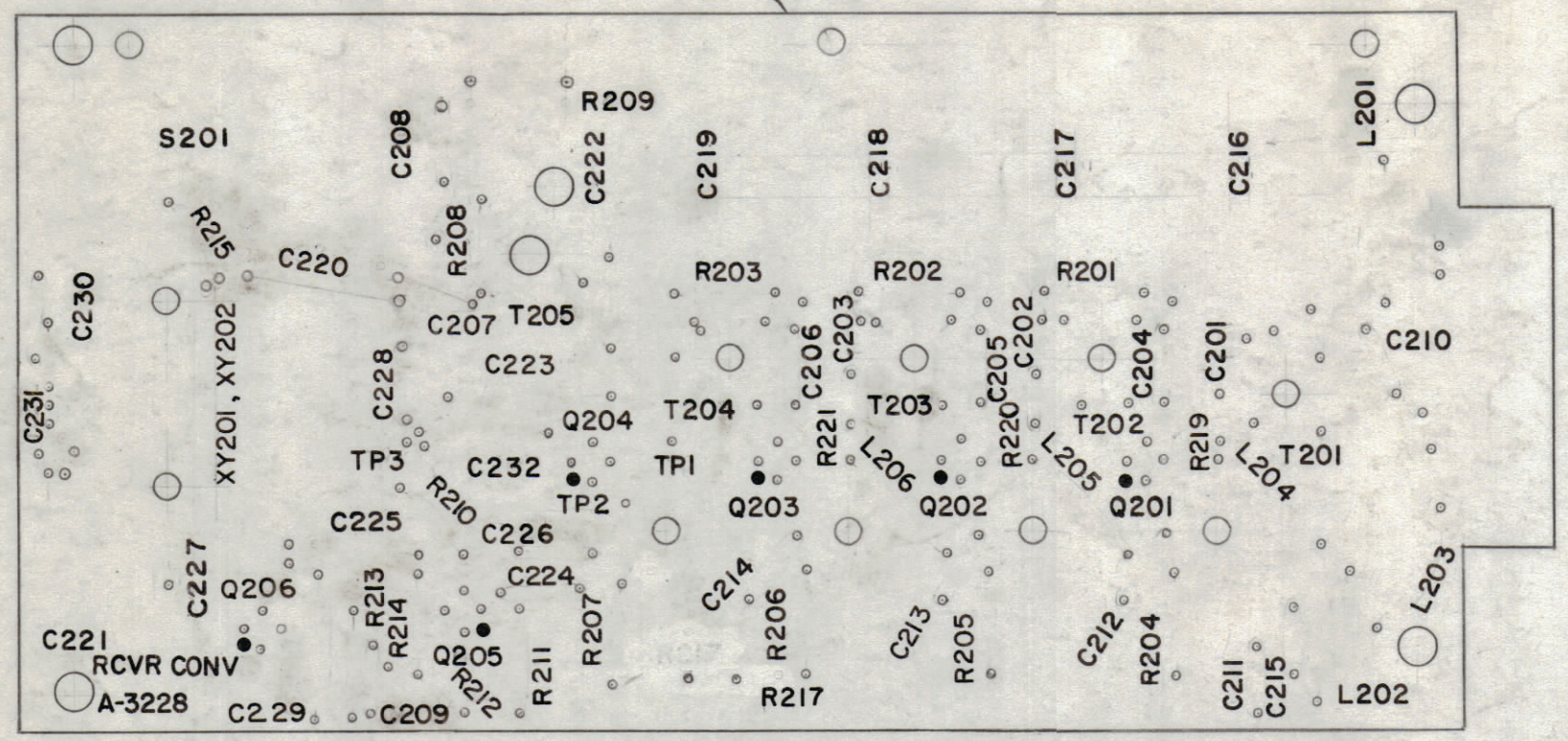
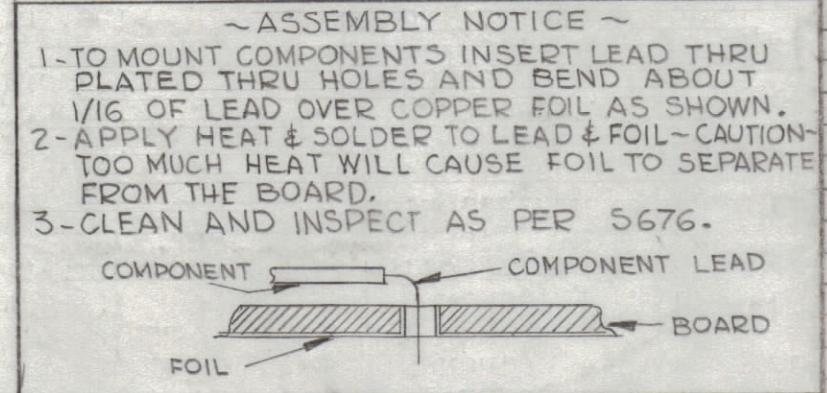


REVISIONS							
ZONE	SYM	DESCRIPTION	DATE	E.M.N. NO.	DRAFT	CHKD	APPD
-4	A	ITEMS 58,47,45,43,40,35, & 11 WERE CHANGED ITEM 62 ADDED, ITEM 59 & 38 DELETED ON PICTORIAL ITEM 38, 58 & 59 DELETED, 47 ADDED	5/4/64	11337	AM	@	PLA
C2, C3, C3, E2	B	IT. 12, CM2, OB2, Z2, J DELE., IT. 11 WAS 1REQ & SYNC 229 ADM. SYM. XZ201 ADD. TO IT. 15, IT. 45 WAS SC-131-0440 BNS	9/22/64	12340	AB	@	19a
AG, 2	C	IT. 45 WAS SCRIP 440BN6; PICV. A3228-1 WAS IT. 18 (2PL.)	1-17-65	13365	FF	@	19a
	D	R216 DELETED C231 ADDED 8/11/REVISID	8/13/65	14485	AV	@	19a
	E	IT 62 WAS TX104	8/13/65	14454	XJV	@	19a
	F	COMPLETELY REVISED B.U.; ADDED IT'S 63, 64; ON MARKING C232 WAS L207; ADDED IT. 63 TO ELECT. ASSY.	7/16/66	16491	JL	QB	MM
	H	ADDED R218 TO R221. ADDED IT 65. ADD * 218 NOTE. ADDED MTG. DETAIL FOR C203 & R221	10/1/66	16992	RME	QB	MM
	J	IT. 26 WAS RC20GF472J. ADDED NOTE FOR IT. 26. RELOC. R217 LETTERING	2-23-67	17837	RME	QB	MM



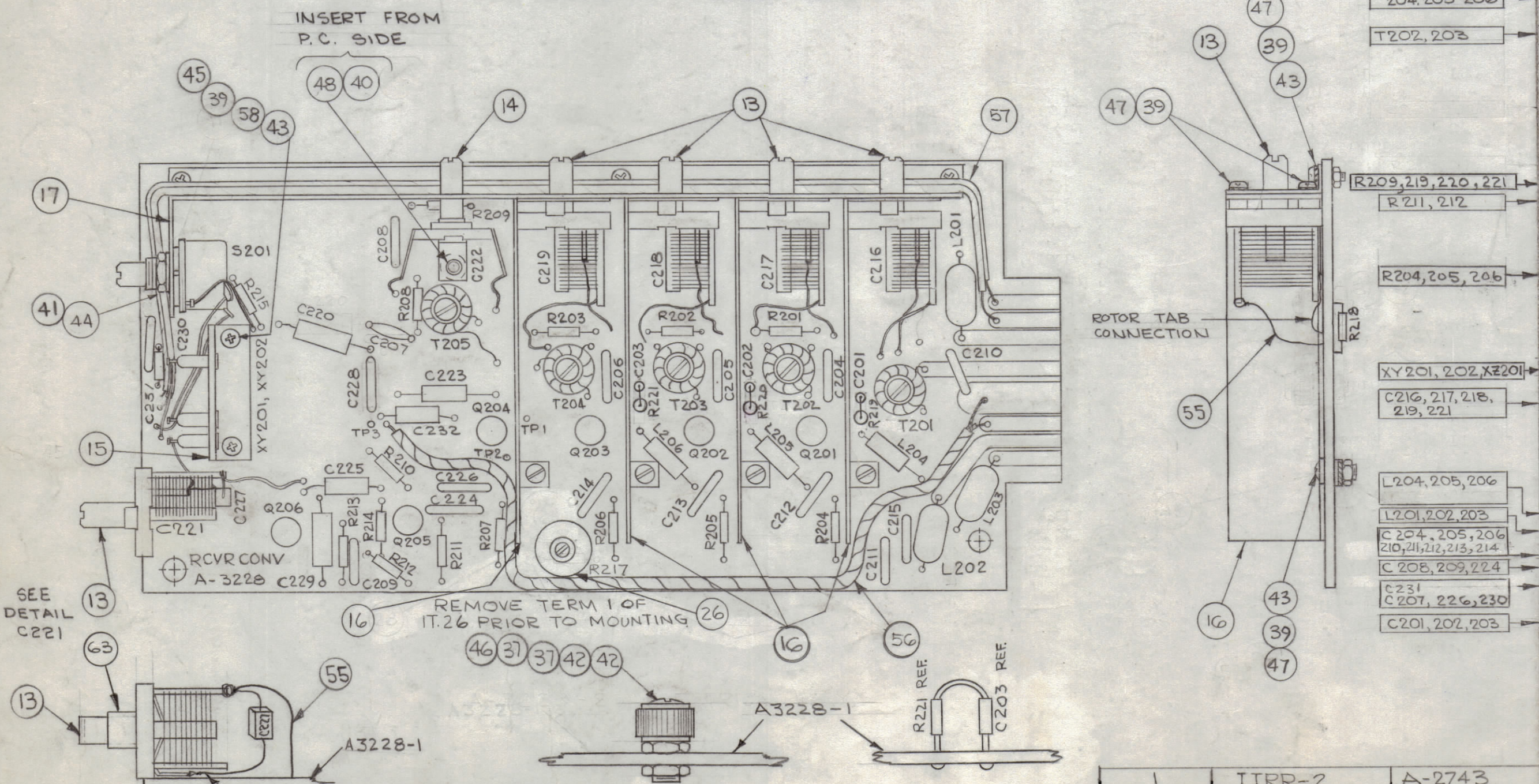
A3228-1 - MARKING -

- ~ UNLESS OTHERWISE SPECIFIED ~
- ALL LETTERING TO BE 3/32 WHITE GOTHIC
 - MARKING PROCESS: PER TMC SPEC. S727 LOCATE APPROX. AS SHOWN.
 - ALL DOTS TO BE 1/16 DIA.



REQ'D.	ITEM	PART NUMBER	DESCRIPTION	SYMBOL
1	65	RC20GF473J *	RESISTOR, FIXED, COMP.	R218
3	64	RC20GF103J	RESISTOR, FIXED, COMP.	R201, 2, 3
1/4"	63	PX370-3-7	INSULATION, SLVG, TEFLON	
1	62	TX104	TRANSISTOR	Q201
1	61	CM15F111J03	CAPACITOR, FIXED, MICA	C220
	60	DELETED		
	59			
2	58	FW04HBN	WASHER, FLAT	
1	57	CA-808-1	CABLE ASSY, SHIELDED, HI-TEMP	W201
1	56	CA-418-8	CABLE ASSY, RF	W202
1-02	55	WL-100-8	WIRE, BUSS, SIZE 24	
0-3	54	PX-104-7-022	SLEEVING, SIZE 24	GRAY
0-2	53	PX-104-6-022	SLEEVING, SIZE 24	BLUE
0-2	52	PX-104-4-022	SLEEVING, SIZE 24	GRN
0-2	51	PX-104-3-022	SLEEVING, SIZE 24	RED
0-2	50	PX-104-2-022	SLEEVING, SIZE 24	YEL.
X	49	BS-100	SOLDER, SOT	
1	48	SCBP0632BN4	SCREW, MACHINE	
15	47	SCBP0440BN4	SCREW, MACHINE	
5	46	SC-143-0440B10	SCREW, MACHINE, NYLON	
2	45	SCBP0440BN5	SCREW, MACHINE.	
1	44	NTH3732BN18	NUT, HEX	
9	43	NTH0440BN6	NUT, HEX	
10	42	NT-137-0440	NUT, HEX, NYLON	
1	41	LWI37MRN	WASHER, LOCK, INT.	
1	40	LW106MRN	WASHER, LOCK, INT.	
17	39	LWE04MRN	WASHER, LOCK, EXT.	
	38			
10	37	FW-101-1	WASHER, FLAT, NYLON	
6	36	PX-829-1	PAD, TRANSISTOR MTG.	
5	35	TX113	TRANSISTOR	
1	34	TZ-133	TRANSFORMER, R.F.	T204
2	33	TZ-132	TRANSFORMER, R.F.	
1	32	TZ-131	TRANSFORMER, R.F.	T201
1	31	TZ-127	TRANSFORMER, R.F.	T205
1	30	SW-192-12NSJ	SWITCH, ROTARY	S201
	29	DELETED		
1	28	RC20GF680J	RESISTOR, FIXED, COMPOSITION	R210
	27	DELETED		
1	26	RV111U502A	RESISTOR, VARIABLE, COMPOSITION	R217
4	25	RC20GF471J	RESISTOR, FIXED, COMPOSITION	
2	24	RC20GF392J	RESISTOR, FIXED, COMPOSITION	
1	23	RC20GF222J	RESISTOR, FIXED, COMPOSITION	R214
1	22	RC20GF470J	RESISTOR, FIXED, COMPOSITION	R213
1	21	RC20GF123J	RESISTOR, FIXED, COMPOSITION	R207
3	20	RC20GF122J	RESISTOR, FIXED, COMPOSITION	
2	19	RC20GF102J	RESISTOR, FIXED, COMPOSITION	R215, 208
1	18	PC-100-3	MECHANICAL ASSY, P.C. BOARD	
1	17	MS-3372	BRACKET, CAPACITOR MTG.	
4	16	MS-3380	SHIELD, R.F.	
1	15	LD-1342/MS-3414	BRACKET, XTAL/OVEN SOCKET	
1	14	CV-113-10	CAPACITOR, VARIABLE, MICA	C222
5	13	CT-103-1	CAPACITOR, VARIABLE, AIR	
1	12	CM20F681G03	CAPACITOR, FIXED, MICA	C229
1	11	CM20B561J	CAPACITOR, FIXED, MICA	C228
1	10	CM15C050J03yy	CAPACITOR, FIXED, MICA	C227
1	9	CM15B181F03yy	CAPACITOR, FIXED, MICA	C225
2	8	CM112F202K3S	CAPACITOR, FIXED, MICA	C223, 232
3	7	CL-240-100	COIL, RF, FIXED	
3	6	CL-140-3	COIL, RF, FIXED	
8	5	CC-100-33	CAPACITOR, FIXED, CERAMIC, DISC	
3	4	CC-100-25	CAPACITOR, FIXED, CERAMIC, DISC	
4	3	CC-100-16	CAPACITOR, FIXED, CERAMIC, DISC	
1	2	CC-100-15	CAPACITOR, FIXED, CERAMIC, DISC	C215
3	1	CC20CK2R2C	CAPACITOR, FIXED, CERAMIC	

A 3228-2 - ELECTRICAL ASSY -



C221 DETAIL

MOUNTING DETAIL FOR SYMBOLS T201 THRU T205

MOUNTING DETAIL FOR C203 & R221, C202 & R220, C201 & R219

NOTES

1	TTR-2	A-2743
Q'TY./UNIT	MODEL USED ON	ASS'Y. NO.
SCALE	CODE	
4	A	

PALMER LIST OF MATERIAL E3037			
MATERIAL		THE TECHNICAL MATERIEL CORP. MAMARONECK, NEW YORK	
FINISH		TITLE PRINTED CIRCUIT BOARD ASSY, RECEIVER MODULE, 4-BMC	
DRAWN	G.D.L	DATE	3-28-63
CHECKED	Hde	DATE	11/11/63
ELECT. DES.	W.A. PALMER	DATE	11/12/63
MECH. DES.	RKOHN	DATE	1/6-64
		SHEET	A-3228
			REV. LTR.

UNLESS OTHERWISE SPECIFIED DIMENSIONS ARE IN INCHES AND INCLUDE CHEMICALLY APPLIED OR PLATED FINISHES

DECIMALS: X ± .05, XX ± .01, XXX ± .005

FRACTIONS: ± 1/64, ANGLES: ± 0° 30'

TOLERANCES

THE CONTENTS OF THIS DRAWING ARE THE EXCLUSIVE PROPERTY OF THE TECHNICAL MATERIEL CORP. ITS UNAUTHORIZED USE OR REPRODUCTION IN WHOLE OR IN PART IS STRICTLY FORBIDDEN.