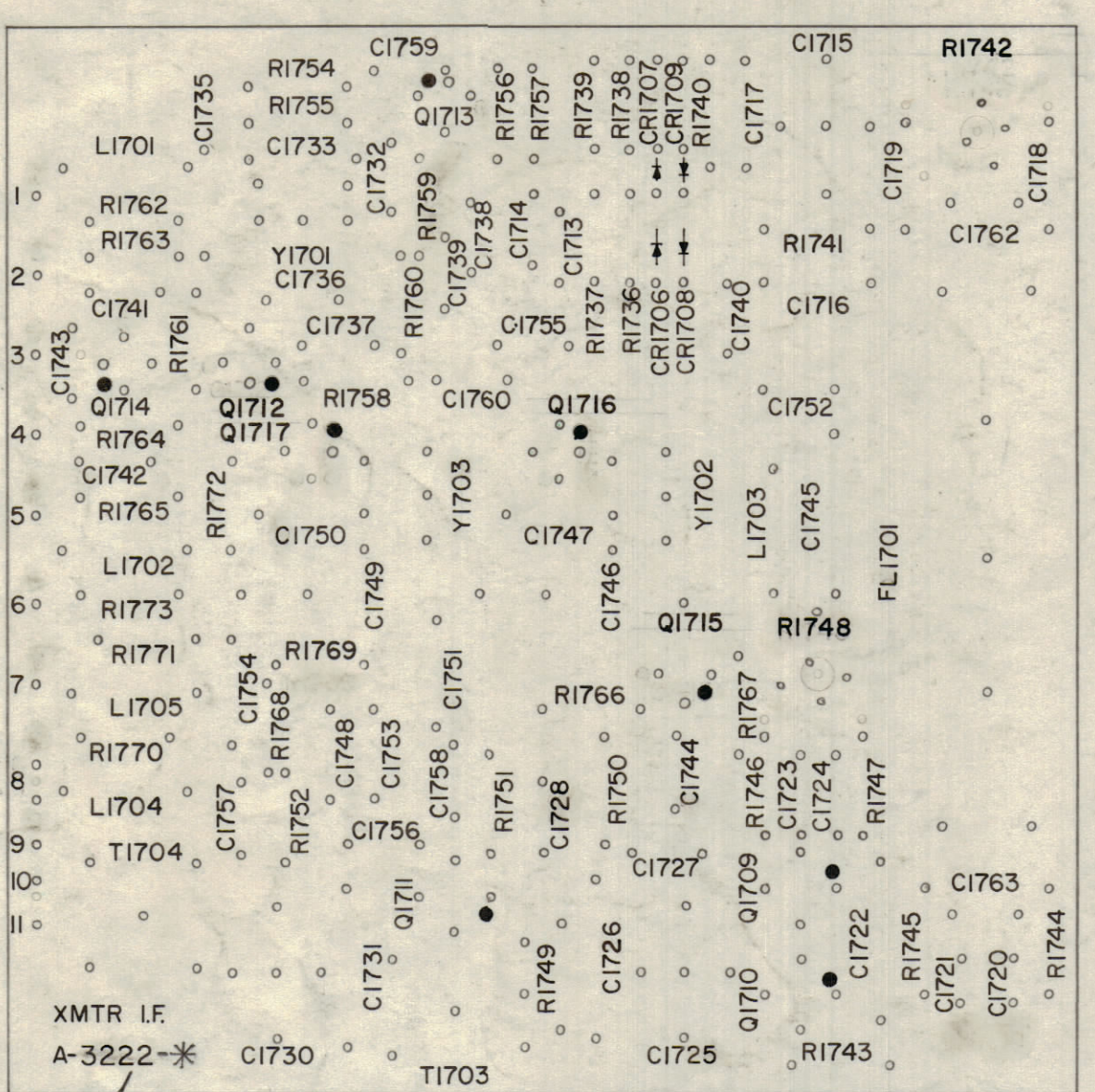


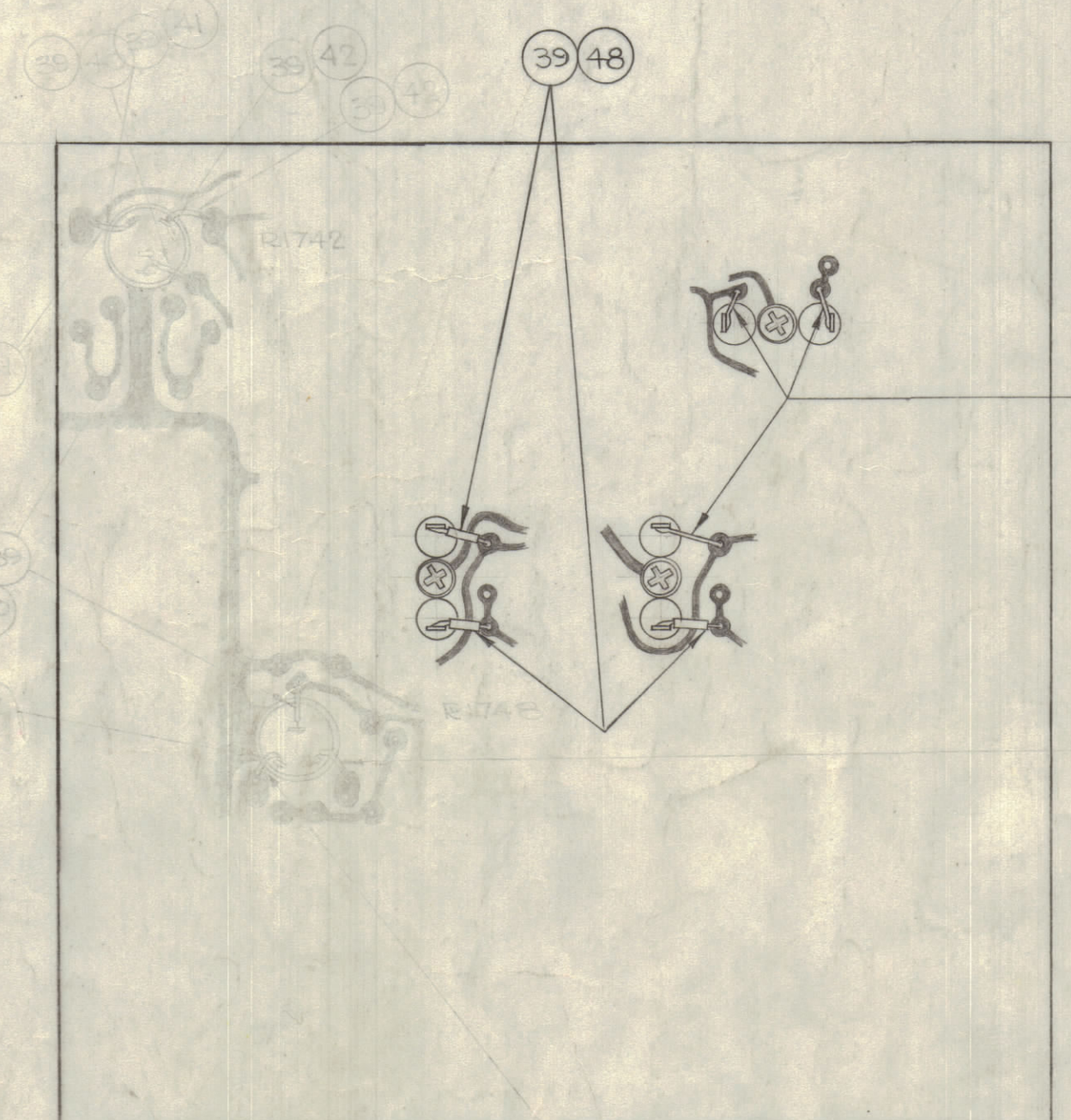
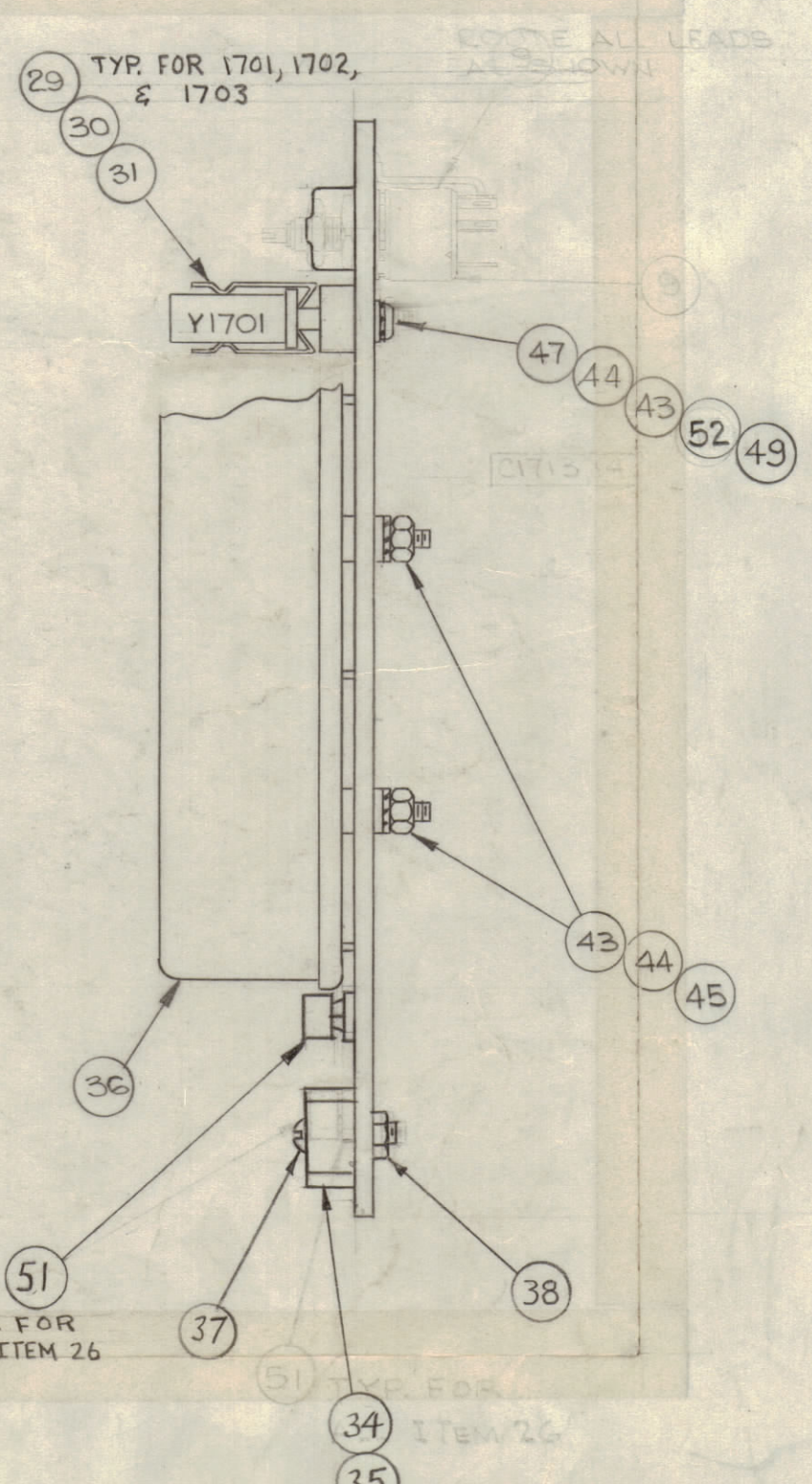
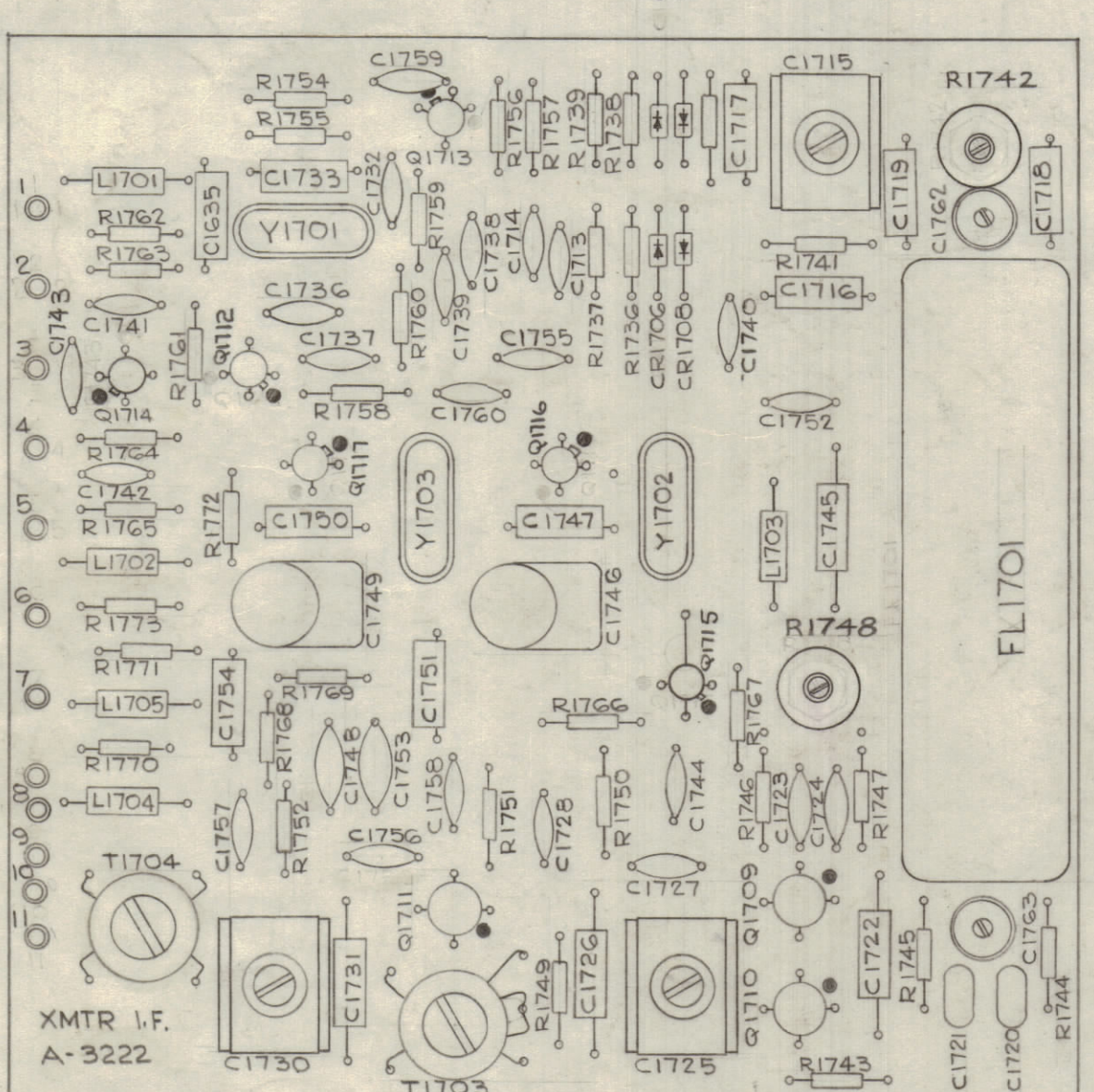
REVISIONS						
ZONE	SYM	DESCRIPTION	DATE	EM. NO.	DRAFT	CHKD
A	SEE SHEET 1 OF 2 FOR REVISION		4/24/64	11327	A.M.	
B	ITEM 9 REV, LETTERING REV.		5-22-64	11442	N.P.	
C	IT-21 WAS CM15B300J, IT-29 WAS TS 104-1, IT-30 WAS CU149-1, IT-31 WAS CR47U-250P, IT-32, W/CR27U-2 000P, IT-33 W/4800P, IT-40, 41, 42, PX 104-2, 3, 4 DELE. IT-43 WAS SRR, IT-45 W/BNG, IT-49 ADD., ON A 3222-3. Q1726 WAS C1736, C1747 WAS Q1747 FOLLOUT 49 ADD.		8.15.64	11464	W.B.	
D	IT-21 WAS CM15B470J, IT-32 & IT-33 WERE CR27U ON A 3222-5. FOLLOUT 49 ADD.		9.29.64	12335	W.B.	
E	ON IT-18 SYMB C1733 DELETED, IT-50 ADDED		10-21-64	12713	W.B.	
F	UPDATED B/M & ADDED IT-51, 52; RELOC. LETTERING R1742; ADDED NOTE "MARK AS SHOWN ETC."		12-21-64	13016	H.L.A.	
G	IT 17, 19, 20, 21, 22 & 50 WERE "CHXXB"; IT 23 WAS CM100-10; IT 31, 32, & 33 WERE "CRXX/U"; COMPONENT ASSY. REVISED; U/O UPDATED.		3-15-65	13649	J.L.	
H	ADDED 03 TO ITEMS 17 THRU 20, 22 & 50. ITEM 24 F. WAS "D", ITEM 13 F. WAS "E"		3-22-67	15020	L.A.K.	



~UNLESS OTHERWISE SPECIFIED~
 1. ALL LETTERING TO BE 3/32 HIGH WHITE GOTHIC.
 2. MARKING PROCESS: PER TMC SPEC. S-727. LOCATE AS SHOWN.



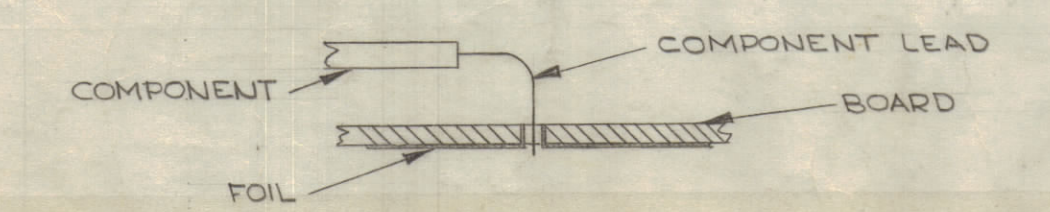
3	52	NTH0440BN6	NUT, HEX		
9	51	PX 829-1	PADS, TRANSISTOR		
1	50	CM15C470J03	CAPACITOR, FIXED, MICA		C1733
3	49	WA-109-17	WASHER, FIBER		
0-02	48	PX-370-15-7	INS. SLEEVING, TEFLON		
3	47	SCBP0440BJ7	SCREW, MACHINE		
X	46	BS 100	SOLDER, SOFT		
2	45	NTH0440BN8	NUT, HEX		
5	44	LWEO4MRN	WASHER, LOCK, EXT		
5	43	FWO4HBN	WASHER, FLAT		
	42				
	41				
	40				
0-10	39	WL100-8	WIRE, BUSS		
2	38	SC 143-1032B8	SCREW, NYLON		
2	37	NT-137-1032	NUT, NYLON		
1	36	FX 195-1	FILTER, B.P., MECHANICAL		FL1701
1	35	TZ 125	TRANSFORMER, R.F.		T1704
1	34	TZ 124	TRANSFORMER, R.F.		T1703
1	33	CR18AJU-1.500000MC	CRYSTAL UNIT, QUARTZ		Y1703
1	32	CR18AJU-2.000000MC	CRYSTAL UNIT, QUARTZ		Y1702
1	31	CR47AJU-250.000KC	CRYSTAL UNIT, QUARTZ		Y1701
3	30	FP-109	RETAINER, CRYSTAL HOLDER		
*	29	TS 104-2	SOCKET, CRYSTAL		
5	28	CL 140-6	COIL, R.F., FIXED		
4	27	IN34A	SEMICON DEVICE, DIODE		
9	26	2N2084	TRANSISTOR		
7	25				
2	24	CM 111F181G55	CAPACITOR, FIXED, MICA		C1780 C1781
2	23	CM100-10			C1726 C1750 C1751 C1745
2	22	CM20F102G03			C1746 C1762 C1742 C1748
2	21	CM15C240J			C1718 C1717
3	20	CM15F271J03			C1716
2	19	CM15F181J03			
1	18	CM15F101J03			
1	17	CM15F161J03	CAPACITOR, FIXED, MICA		
12	16	CC 100-2B	CAPACITOR, FIXED, CERAMIC, DISC		
4	15	CC 100-1G	CAPACITOR, FIXED, CERAMIC, DISC		
8	14	CC 100-33	CAPACITOR, FIXED, CERAMIC, DISC		
1	13	CM 112F 512F35	CAPACITOR, FIXED, MICA		C1736
3	12	CV 114-1	CAPACITOR, VARIABLE, MICA		
2	11	CV 109-6	CAPACITOR, VARIABLE, CERAMIC		C1740 C1743
2	10	CV 112-2	CAPACITOR, VARIABLE, CERAMIC		C1762 C1742 R1748
2	9	RV111U103A	RESISTOR, VARIABLE, COMP		
6	8	RC20GF103J	RESISTOR, FIXED, COMP		R1743
1	7	303			
7	6	472			
1	5	332			R1761
16	4	102			
2	3	331			R1740 R1741 R1753 R1764
2	2	RC20GF220J	RESISTOR, FIXED, COMP		
12	1	TE 127-3	TERMINAL, STUD		



~NOTE~
 CIRCUITRY SHOWN PERTAINS TO CRYSTAL SOCKET WIRING ONLY

NOTE:
 * ON STR #STE CHANGE
 FP109 TO CU149-1

~ASSEMBLY NOTICE~
 1. TO MOUNT COMPONENTS, INSERT LEAD THROUGH PLATED THRU HOLE AND BEND ABOUT 1/16 OF LEAD OVER FOIL AS SHOWN.
 2. APPLY HEAT AND SOLDER TO LEAD & FOIL ~CAUTION~ TOO MUCH HEAT WILL CAUSE FOIL TO SEPARATE FROM THE BOARD.
 3. CLEAN AND INSPECT AS PER S767.



NOTES

SME-1	
STE-1	
TTR-10	A-2785
QTY./UNIT	MODEL USED ON
SCALE	DO NOT SCALE
CODE	A
ASSY. NO.	

REQ'D.	ITEM	PART NUMBER	DESCRIPTION	SYMBOL
KOHN LIST OF MATERIAL E-3037-B7				
MATERIAL				
FINISH				
UNLESS OTHERWISE SPECIFIED DIMENSIONS ARE IN INCHES AND INCLUDE CHEMICALLY APPLIED OR PLATED FINISHES				
DECIMALS	X ± .08	FRACTIONS	± 1/64	
ANGLES	± .01	ANGLES	± 0° 30'	
TOLERANCES				
THE CONTENTS OF THIS DRAWING ARE THE EXCLUSIVE PROPERTY OF THE TECHNICAL MATERIEL CORP. ITS UNAUTHORIZED USE OR REPRODUCTION IN WHOLE OR IN PART IS STRICTLY FORBIDDEN.				
DRAWN		DATE		FINAL APPROVAL
CHECKED		DATE		
ELECT. DES.		DATE		
MECH. DES.		DATE		

THE TECHNICAL MATERIEL CORP.
 MAMARONECK, NEW YORK
 TITLE
 PRINTED CIRCUIT BOARD ASSY
 TRANSMITTER I.F.

DATE 10/16/63
 DATE 10/16/63
 DATE 10/16/63
 SHEET 2 OF 2
 REV. LTR. H