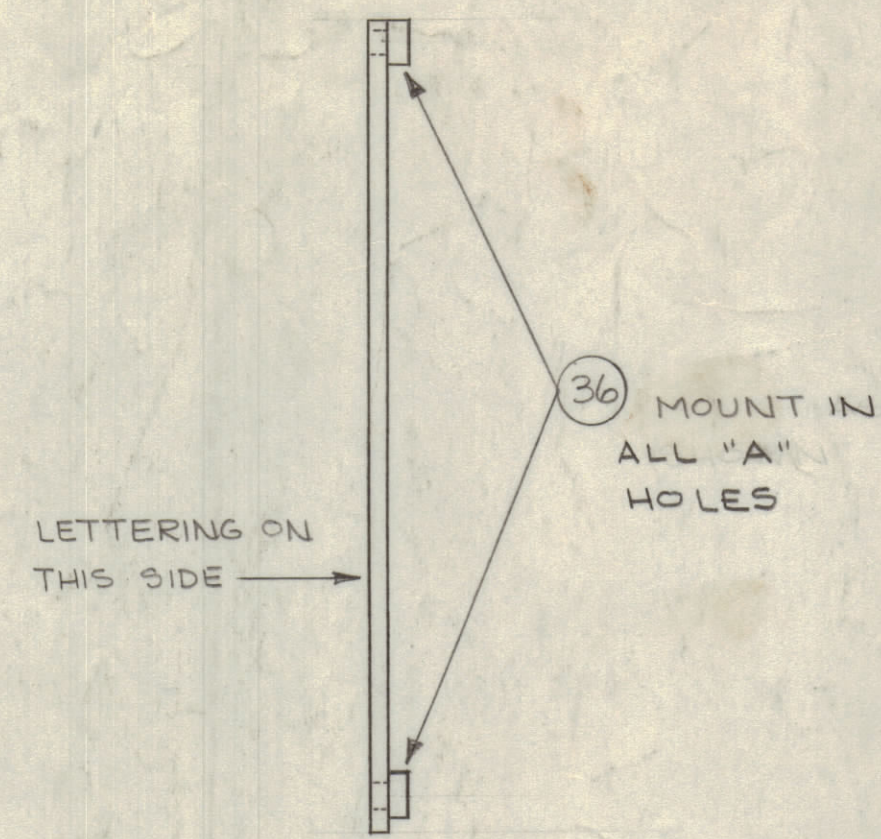
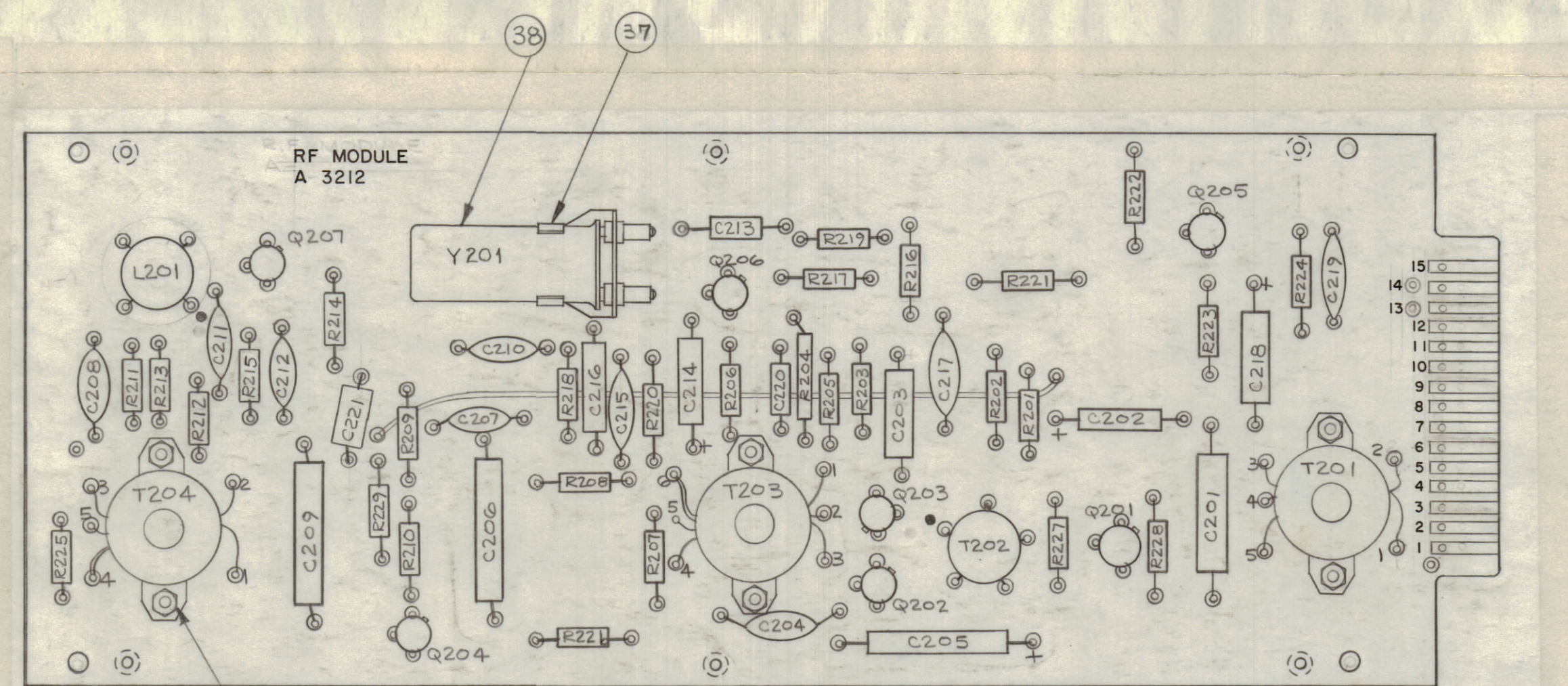


- UNLESS OTHERWISE SPECIFIED-
- 1- ALL LETTERING TO BE 5/64 HIGH, BLACK GOTHIC.
  - 2- MARKING PROCESS AS PER TMC SPEC S-727.
  - 3- LETTERING TO BE PLACED ± 1/64 AS SHOWN.
  - 4- ALL DOTS TO BE 1/16 DIA., .010 STROKE.

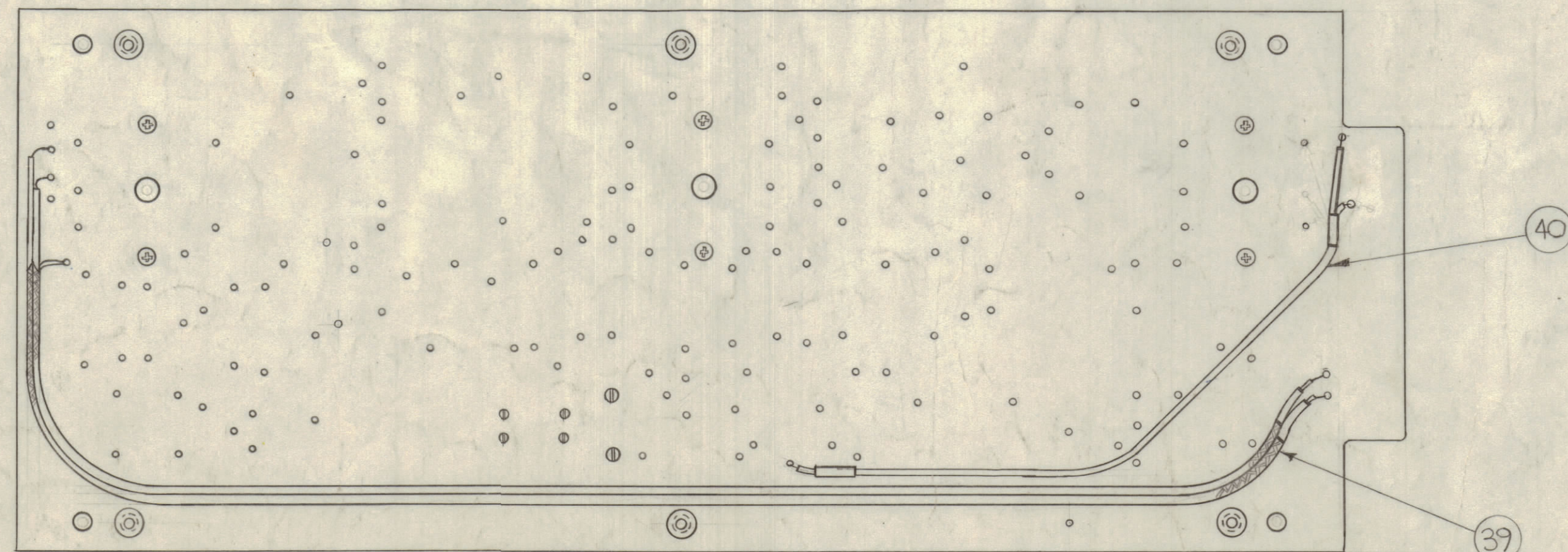
MARKING (A 3212-3)



SUB-ASS'Y (A 3212-4)



ELECTRICAL ASS'Y (A 3212-5)



REAR VIEW SHOWN

ELECTRICAL ASS'Y	FREQ. RANGE	ITEM 30	ITEM 31	ITEM 32	"L" IN MH
A3212-5-3	10-12 KCS	TZ-161-11	TZ-162-11	TZ-163-11	3.3
A3212-5-4	12-14 KCS	TZ-161-13	TZ-162-13	TZ-163-13	2.9
A3212-5-5	14-18 KCS	TZ-161-16	TZ-162-16	TZ-163-16	2.3
A3212-5-6	18-24 KCS	TZ-161-21	TZ-162-21	TZ-163-21	1.8
A3212-5-7	24-30 KCS	TZ-161-27	TZ-162-27	TZ-163-27	1.14
A3212-5-10	55-65 KCS	TZ-161-60	TZ-162-60	TZ-163-60	0.5

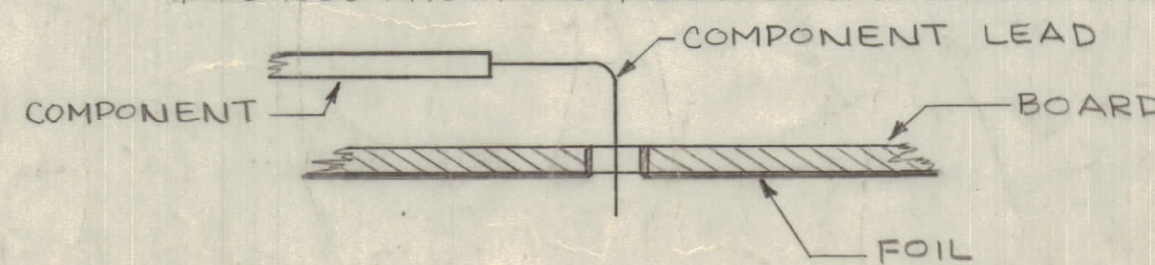
- NOTES:
- 1- FREQUENCY OF CRYSTAL = OPERATING FREQ. + 3 KCS.
  - 2- COMPUTE VALUE BY FOLLOWING FORMULA:

$$C_{mf} = \frac{25.33}{F \times L} \quad \text{(EXACT CAPACITANCES ARE SHOWN IN MATERIAL LIST)}$$

WHERE F = OPERATING FREQ. IN KCS.  
L = INDUCTANCE IN MILLIHENRIES (SEE TABLE ABOVE)

- 3- VALUE OF R219 IS NOMINAL SUBJECT TO FACTORY ADJUSTMENT. RANGE 1.2K TO 8.2K.

- ASSEMBLY NOTICE-
- 1- TO MOUNT COMPONENTS INSERT LEAD THROUGH PLATED-THRU HOLES AND BEND ABOUT 1/16" OF LEAD OVER COPPER FOIL AS SHOWN.
  - 2- APPLY HEAT AND SOLDER TO LEAD, AND FOIL - CAUTION- TOO MUCH HEAT WILL CAUSE THE FOIL TO SEPARATE FROM THE BOARD.
  - 3- CLEAN AND INSPECT AS PER SPEC. S-676.
  - 4- FUNGUS PROOFING PER TMC SPECIFICATION S113.



NOTES

REVISIONS							
ZONE	SYM	DESCRIPTION	DATE	E.M.N. NO.	DRAFT	CHKD	APPD
F9	X1	LETTERING COMPLETELY REDRAWN	9-12-63	1	GS		
	X2	SEE A3212 SHT-1	2-5-64	2	GS		MP
	X3	REMOVED ITEM 13 PT. NO. WAS RC20GF562J BY 1, SYM. R215; ADDED R215 TO ITEM 14 QTY WAS 2	2/26/64	3	J.L.		MP
	X4	CHART NOTES + ITEM 13, 37, 43 + 44 ADDED ITEM 42 WAS CC-100-33, C208 PICTORIAL UPDATED	2/1/64	4	GS	MP	AK
	X5	ADDED TZ-161, 162 & 163-118, 13 TO ITEMS 30, 31 & 32 OF RF TRANS. TABLE, ADDED MATERIAL LIST NOTE TO FORMULA OF NOTE 2.	4/1/64	5	J.L.		MP
#	0	ORIGINAL RELEASE FOR PRODUCTION	5/12/64	0	A.M.		
-	A	IT. 28 WAS 2N386A, DELETED BLANK PANEL COLUMN ON CHART, HOLE FROM CONTACT 4 DELE.	8/26/64	12096	10E		MP
	B	"L" COLUMN ADDED TO TABLE "SEE TABLE ABOVE" ADDED TO IND. VALUE	7/20/67	18349	WHO		MP

REQ'D.	ITEM	PART NUMBER	DESCRIPTION	SYMBOL
SEE NOTE 3	1	44	RC20GF( )	RESISTOR, FIXED, COMPOSITION R219
SEE NOTE 2	1	43	RC20GF100K	RESISTOR, FIXED, COMPOSITION R210
	3	42	CX 104- ( )	CAPACITOR, POLYSTYRENE C201, 206, 209
	X	41	BS 100	SOLDER, SOFT
	0-06"	40	RG 174/U	CABLE, COAXIAL
	1	39	CA 796	CABLE, R.F. OUTPUT
	1	38	TS 167-1	SOCKET, CRYSTAL XY201
SEE NOTE 1	1	37	CR 50/U	CRYSTAL Y201
	6	36	TE 104-7	STANDOFF, RIVET TYPE
	6	35	SCBPO256BNG	SCREW, MACHINE
	6	34	NTH0256BNG	NUT, HEX
	6	33	LW102MRN	LOCKWASHER, INTERNAL
	1	32	SEE CHART	TRANS, R.F. TUNED T204
	1	31	SEE CHART	T203
	1	30	SEE CHART	TUNED T201
	1	29	TR 182	TRANS, R.F. FIXED T202
Q201 THRU Q207	7	28	2N396A (TX101-I)	DIODE
	1	27	CN 113-1	CAPACITOR, FIXED, MYLAR, DIELECTER C216
	1	26	CM15B390J	CAPACITOR, FIXED, MICA C213
	1	25	CL 321	COIL, R.F. TUNED L201
	1	24	CE 105-125-15	MINIATURE ELECTROLYTIC CAP. C205
	1	23	CE 105-25-15	C214
	1	22	CE 105-8-15	C221
	1	21	CE 105-6-15	C202
	1	20	CE 105-5-15	MINIATURE ELECTROLYTIC CAP. C218
	2	19	CC-100-34	CAPACITOR, FIXED, CERAMIC DISC. C207, 215
	6	18	CC 100-33	C219, 212
	2	17	CC 100-25	C219, 212
	1	16	CC 100-16	CAPACITOR, FIXED, CERAMIC DISC. C211
	4	15	RC20GF822K	RESISTOR, FIXED, COMPOSITION R220, 223
	2	14	RC20GF682K	RESISTOR, FIXED, COMPOSITION R215
	1	13	RC20GF273K	RESISTOR, FIXED, COMPOSITION R214
	1	12	RC20GF562J	RESISTOR, FIXED, COMPOSITION R226
	1	11	561K	R224
	1	10	392K	R222
	1	9	332K	R213
	1	8	272K	R218
	1	7	223K	R212
	1	6	222K	R204
	1	5	220K	R216
	1	4	182K	R211
	4	3	123K	R21, 217
	2	2	103K	
	5	1	RC20GF 102K	RESISTOR, FIXED COMPOSITION

LIST OF MATERIAL			
REQ'D.	ITEM	PART NUMBER	DESCRIPTION
M. GELLMAN			

THE TECHNICAL MATERIEL CORP.		MAMARONECK, NEW YORK	
FINISH			
MATERIAL		TITLE	
		PRINTED CIRCUIT BOARD, ASSEMBLY (R.F. MODULE)	
QTY./UNIT	MODEL USED ON	SCALE	ASSY. NO.
1:1	A		AX-432
UNLESS OTHERWISE SPECIFIED DIMENSIONS ARE IN INCHES AND INCLUDE CHEMICALLY APPLIED OR PLATED FINISHES		DRAWN BY	DATE
		5-7-64	8-1-63
CHECKED		DATE	DATE
		5-7-64	8-1-63
THE CONTENTS OF THIS DRAWING ARE THE EXCLUSIVE PROPERTY OF THE TECHNICAL MATERIEL CORP. ITS UNAUTHORIZED USE OR REPRODUCTION IN WHOLE OR IN PART IS STRICTLY FORBIDDEN.		DECIMALS	FRACTIONS
		.XX ± .01	1/64
		.XXX ± .005	± 0° 30'
NOTES		ANGLES	DATE
		± 0° 30'	8-7-64
		TOLERANCES	SHEET
		± 0° 30'	2 OF 2
		DATE	REV. LTR.
		8-7-64	B

QTY./UNIT	MODEL USED ON	SCALE	ASSY. NO.
1:1	A		AX-432

DECIMALS	FRACTIONS	ANGLES	DATE
.XX ± .01	1/64	± 0° 30'	8-7-64
.XXX ± .005	± 0° 30'		