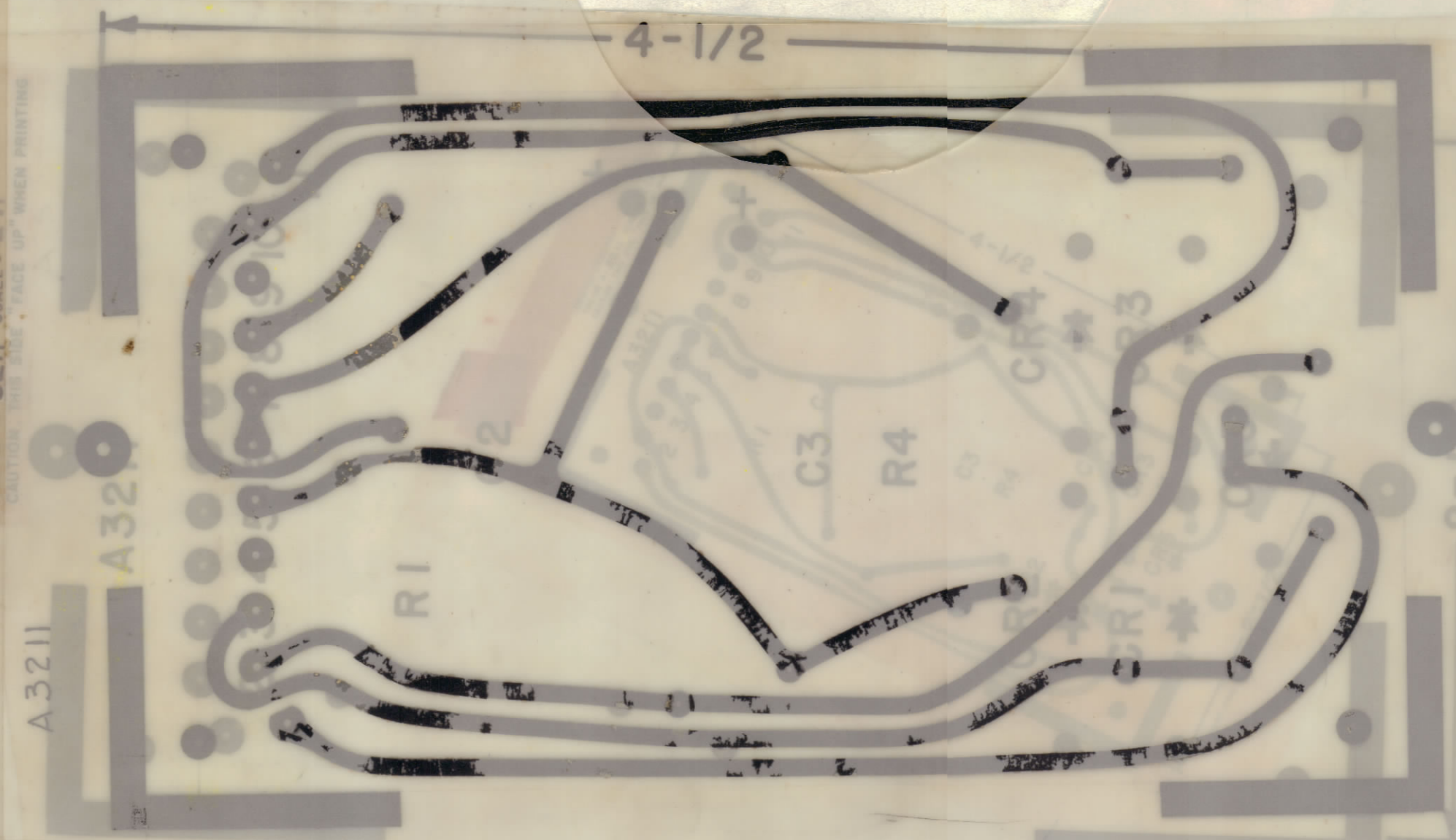


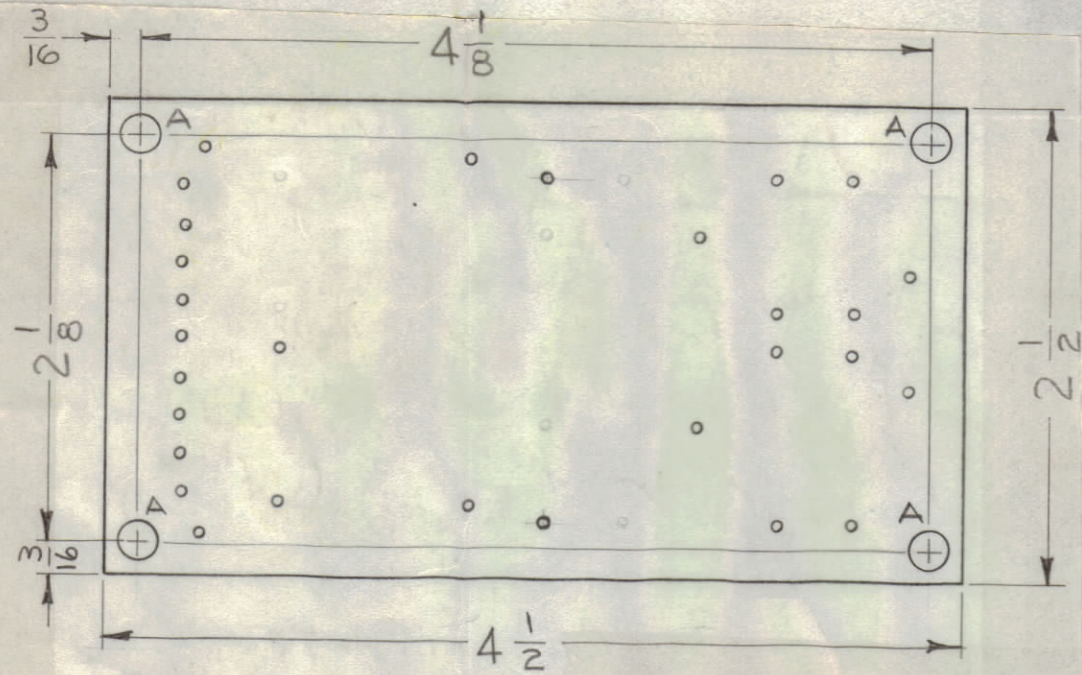
PRINTED CIRCUITRY
TMC NO. A-3211 SCALE: 2:1



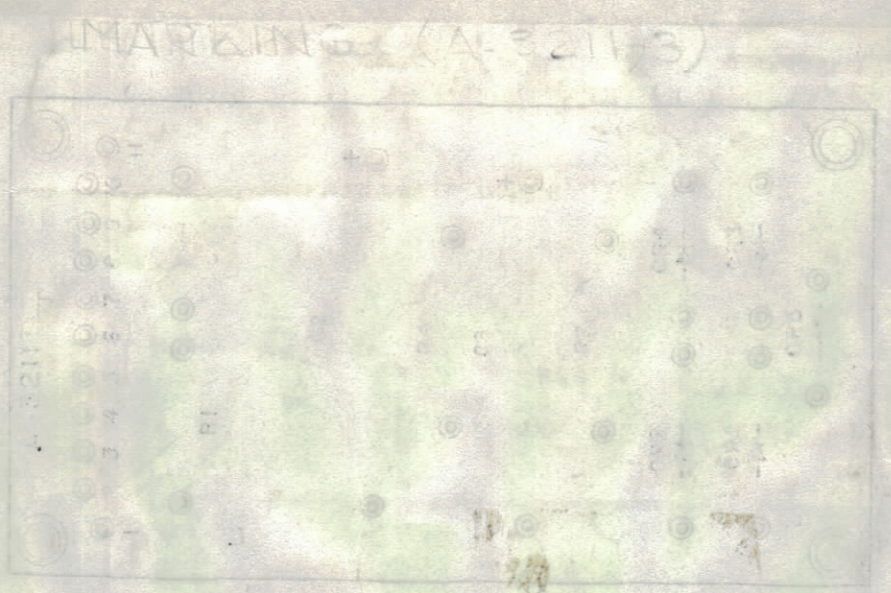
PRINTED CIRCUITRY
TMC NO. A-3211 SCALE: 2:1
CAUTION: THIS SIDE "FACE UP" WHEN PRINTING

ETCHING, PRINTED CIRCUIT
(A-3211-1)

ORIGINAL ARTWORK TO BE REMOVED FROM
PROTECTIVE POCKETS WHEN PHOTOGRAPHING.



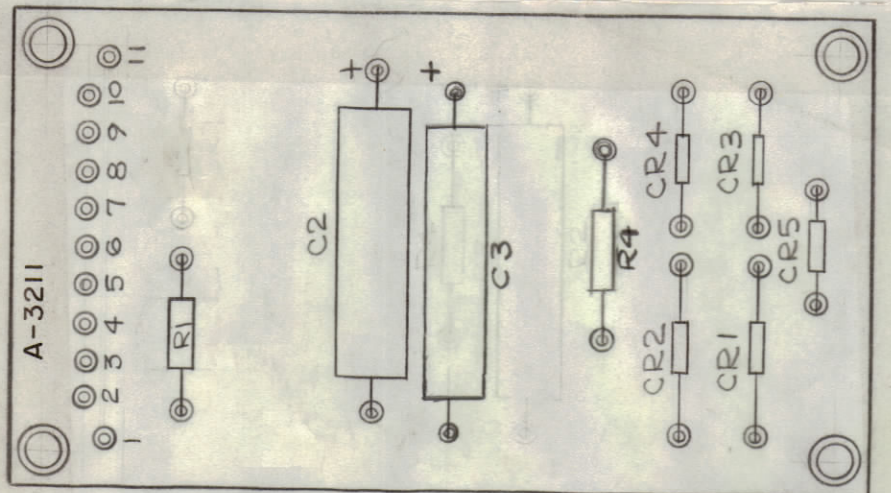
MACHINING (A-3211-2)
DO NOT SCALE WORK TO DIMENSIONS



HOLE & PAD SPECIFICATIONS			
HOLE	DIA.	PAD DIA.	REQ.
UNMARKED	.052	.130	29
A	1/64		4

CRI THRU CR5

ORIGINAL ARTWORK TO BE SUPPLIED BY TMC
FOR PHOTOGRAPHING (SCALE)



ELECTRICAL ASSY (A-3211-3)

NOTES

Q'TY./UNIT	MODEL USED ON	ASS'Y. NO.
1	LFS-1	AX
1	VLR-1	AX-433
SCALE	CODE	
1:1	A	

THE CONTENTS OF THIS DRAWING ARE THE EXCLUSIVE PROPERTY OF THE TECHNICAL MATERIEL CORP. ITS UNAUTHORIZED USE OR REPRODUCTION IN WHOLE OR IN PART IS STRICTLY FORBIDDEN.

REVISIONS						
ZONE	SYM	DESCRIPTION	DATE	E.M.N. NO.	DRAFT	CHKD
X1		COMPLETELY REDRAWN, PADS ADDED	9-16-63	1	P.S.	
X2		ITEM (4) WAS RC43GF102K	1-18-63	2	P.S.	
X3		DELETED ITEM 2 WAS REQD(1), PT. NO. IN 3029B, DESCRIPTION, DIODE; REMOVED CR7 FROM MARKING & ELEC. ASS'Y; ITEM 6 WAS CE-105-200-15	4/7/64	3	JL	RAH
O		ORIGINAL RELEASE FOR PRODUCTION	6/1/64	0	A.M.	
A		ON D/M IT.6 WAS CE-116-6, REDRAWN FROM A Z SIZE	10-1-64	12376		
B		ON PICT: (A3211-3, & -4) DELE; (A3211-3) WAS (A3211-5)	12-10-64	13070	72	
C		NOTES REVISED, PICT. UPDATED, IT.3 WAS RC42GF472K IT.4 RC42GF102K DELE, HOLE & PAD SPECS. UPD.	1-20-65	13309	AB	

FABRICATION NOTES:
TO BE MANUFACTURED IN ACCORDANCE WITH TMC SPEC. S-735 & SPECIFICALLY:

MATERIAL:
G10 EPOXY, OVERLAID WITH COPPER FOIL
OVERALL THICKNESS .062 ± .0075
TIN LEAD PLATING OVER COPPER (PP13.2.2)

HOLES MARKED WITH * TO BE PLATED-THRU
(SEE HOLE LEGEND CHART) (PP11.4)

CONDUCTIVE PATTERN SHALL BE SOLDER COATED
AS PER (PP13.3 & PP13.3.1)

HOLES SHALL BE LOCATED WITH A TOLERANCE
OF ±.005 FROM DOTS IN CENTER OF LANDS OR
FROM ROUND SPOTS, UNLESS OTHERWISE SPECIFIED.

TRIM BOARD ALONG INSIDE EDGE OF TRIM LINE
TO WITHIN SPECIFIED LIMITS. ALL EXCESS
COPPER ALONG THE EDGES SHOULD BE REMOVED
AFTER TRIMMING.

FUNGUS PROOFING PER TMC SPECIFICATION S-113

REQ'D.	ITEM	PART NUMBER	DESCRIPTION	SYMBOL
X	7	BS-100	SOLDER, TIN ALLOY	
2	6	CE-116-6VN	CAPACITOR, ELECTROLYTIC	C2, 3
1	5	RC32GF471K	RESISTOR-FIXED COMPOSITION	R1
1	4	DELETED		
1	3	RC42GF151K	RESISTOR-FIXED COMPOSITION	R4
	2		DELETED	
5	1	IN2484	DIODE	

M. GELLMAN LIST OF MATERIAL			
SEE NOTE # 1		THE TECHNICAL MATERIEL CORP. MAMARONECK, NEW YORK	
SEE NOTE # 1		TITLE PRINTED CIRCUIT BOARD, ASSY. (POWER SUPPLY)	
FINISH		DATE	DATE
		10-26-64	
UNLESS OTHERWISE SPECIFIED DIMENSIONS ARE IN INCHES AND INCLUDE CHEMICALLY APPLIED OR PLATED FINISHES	DRAWN	DATE	DATE
	10-26-64		
DECIMALS .X ± .05 .XX ± .01 .XXX ± .005	FRACTIONS ± 1/64 ANGLES ± 0° 30'	ELECT. DES.	DATE
			10-26-64
		MECH. DES.	DATE
			10-26-64
		SHEET	
			REV. LTR.

A-3211

0

1

C

3