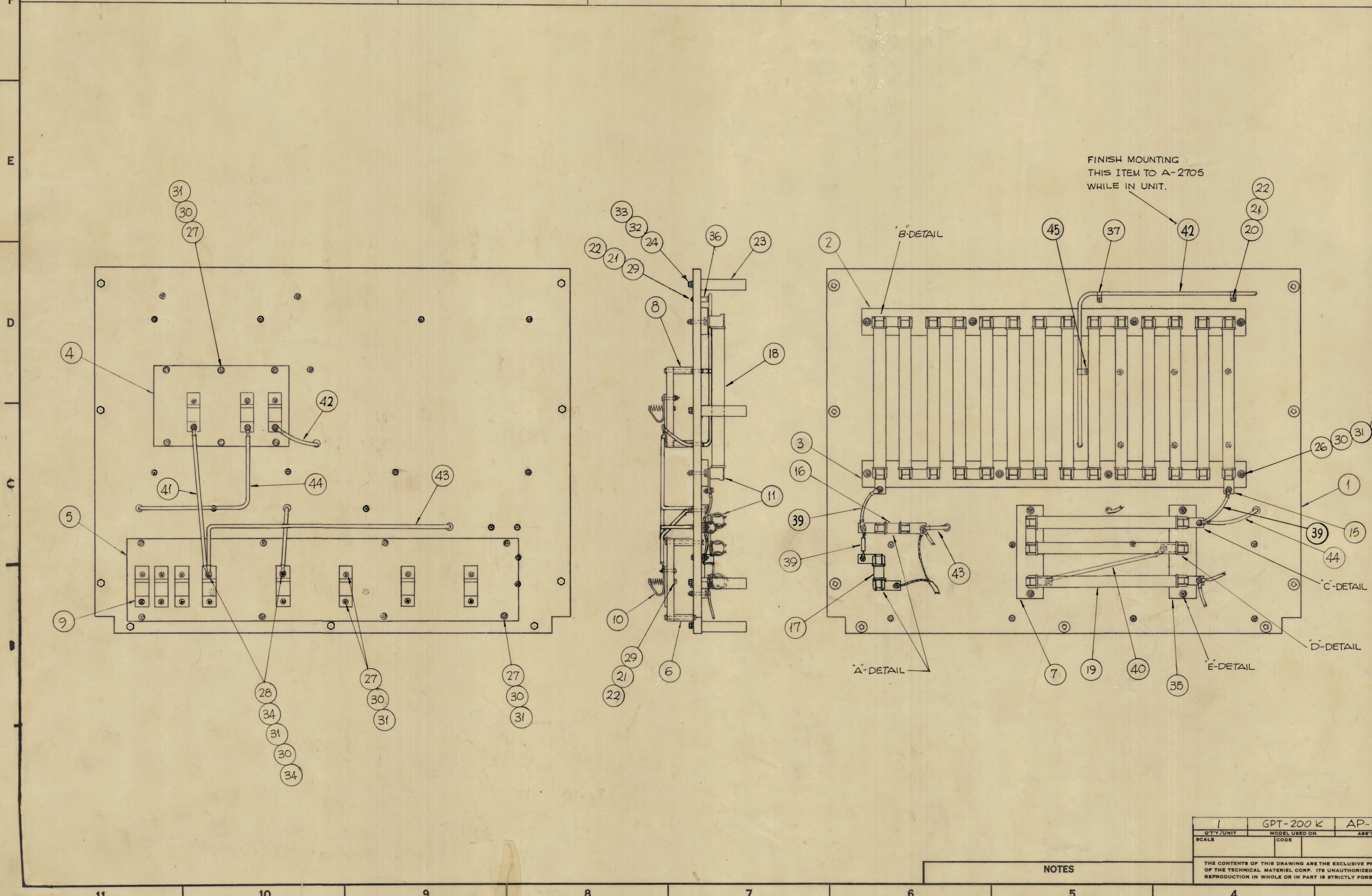


| REVISIONS | | | | | | |
|-----------|-----|---------------------------------|---------|------------|-------|------|
| ZONE | SYM | DESCRIPTION | DATE | E.M.N. NO. | DRAFT | CHKD |
| | 0 | ORIGINAL RELEASE FOR PRODUCTION | 7.23.64 | | ASB | |
| C2 | A | IT.17 WAS RWIGG131 | 8.12.64 | 12110 | ASB | |
| C2 | B | IT.23 WAS TE2520AE16R | 9.17.64 | 12366 | ASB | |



| QTY. | UNIT | MODEL USED ON | ASSY. NO. |
|------|------|---------------|-----------|
| 1 | | GPT-200 K | AP-111 |

| REQ'D. | ITEM | PART NUMBER | DESCRIPTION | SYMBOL |
|--------|------|------------------|--|--------|
| 1 | 45 | NS3W0205 | INSULATOR, STANDOFF | |
| 1 | 44 | CA 409-134-21.00 | LEAD, ELECTRICAL | |
| 1 | 43 | CA 412-51-24.00 | | |
| 1 | 42 | CA 409-134-89.00 | | |
| 1 | 41 | CA 412-51-11.00 | | |
| 1 | 40 | CA 409-134-7.00 | | |
| 3 | 39 | CA 409-134-2.00 | LEAD, ELECTRICAL | |
| 2 | 38 | SCBP1032BN8 | SCREW, MACHINE | |
| 3 | 37 | CU102-4 | CLAMP "G" TYPE | |
| 2 | 36 | NS 3W0208 | INSULATOR, STANDOFF, ROUND | |
| 1 | 35 | PX 726 | BOARD RES. CLIP MTG. | |
| 81 | 34 | NTH 1032BN12 | NUT, HEX | |
| 9 | 33 | FW 25HBN | WASHER, FLAT | |
| 9 | 32 | LWS 25MRN | LOCKWASHER, SPLIT | |
| 76 | 31 | FW10HBN | WASHER, FLAT | |
| 118 | 30 | LWS10MRN | LOCKWASHER, SPLIT | |
| 14 | 29 | SCBP0832BN16 | SCREW, MACHINE | |
| 2 | 28 | SCBP1032BN20 | | |
| 48 | 27 | SCBP1032BN16 | | |
| 16 | 26 | SCBP1032BN18 | | |
| 42 | 25 | SCBP1032BN10 | SCREW, MACHINE | |
| 9 | 24 | SCHH 2520BN16 | SCREW, HEX HEAD | |
| 9 | 23 | TE 2520AE41R | SPACER, THREADED | |
| 17 | 22 | FW08HBN | WASHER, FLAT | |
| 17 | 21 | LWS08MRN | LOCKWASHER, SPLIT | |
| 3 | 20 | SCBP0832BN10 | SCREW, MACHINE | |
| 3 | 19 | RW118F3R0 | RESISTOR, FIXED, 3 OHM | |
| 14 | 18 | RW118F183 | RESISTOR, FIXED, 18K OHM | |
| 1 | 17 | RW119G131 | RESISTOR, 130 OHM | |
| 1 | 16 | RW119F1R0 | RESISTOR, 1 OHM | |
| 20 | 15 | MS 1478 | PLATE, RESISTOR MTG. | |
| 4 | 14 | MS 2007 | PLATE RESISTOR CLIP | |
| 4 | 13 | MS 2008 | PLATE, SPACER, RESISTOR CLIP | |
| 4 | 12 | FC 102-4-XX-N | CLIP, FUSE | |
| 34 | 11 | FC 103 | CLIP, FUSE | |
| 11 | 10 | AX 153 | CONTACT, H.V. | |
| 11 | 9 | MS 2006 | PLATE, H.V. CONTACTS | |
| 2 | 8 | PX 727 | SUPPORT, H.V. CONTACT CROWBAR BD. | |
| 1 | 7 | LD 1223/PX 726 | LETTERING, BOARD, RES. CLIP MTG. | |
| 2 | 6 | PX 731 | BOARD, H.V. CONTACT SUPPORT | |
| 1 | 5 | LD 1227/PX 730 | LETTERING H.V. CONTACT BD. | |
| 1 | 4 | LD 1238/PX 725 | LETTERING H.V. CONTACT BD. | |
| 1 | 3 | PX 729 | BOARD, RES. CLIP MTG. | |
| 1 | 2 | LD 1225/PX 728 | LETTERING, TOP RESISTOR MTG. BD. | |
| 1 | 1 | LD 1234/PX 732-2 | LETTERING, BOARD, H.V. RES. CONTACT MTG. | |

| F. BUDETTI | | LIST OF MATERIAL | |
|---|--|--|--|
| MATERIAL | | THE TECHNICAL MATERIEL CORP. MAMARONECK, NEW YORK | |
| FINISH | | TITLE RESISTOR BOARD ASS'Y | |
| SCALE | | DRAWN SDG DATE 3-26-63 | |
| DECIMALS | | CHECKED [Signature] DATE | |
| FRACTIONS | | ELECT. DES. [Signature] DATE | |
| TOLERANCES | | MECH. DES. [Signature] DATE | |
| UNLESS OTHERWISE SPECIFIED DIMENSIONS ARE IN INCHES AND INCLUDE CHEMICALLY APPLIED OR PLATED FINISHES | | DATE | |
| THE CONTENTS OF THIS DRAWING ARE THE EXCLUSIVE PROPERTY OF THE TECHNICAL MATERIEL CORP. ITS UNAUTHORIZED USE OR REPRODUCTION IN WHOLE OR IN PART IS STRICTLY FORBIDDEN. | | SHEET A 3200 | |
| | | REV. LTR. B | |

NOTES