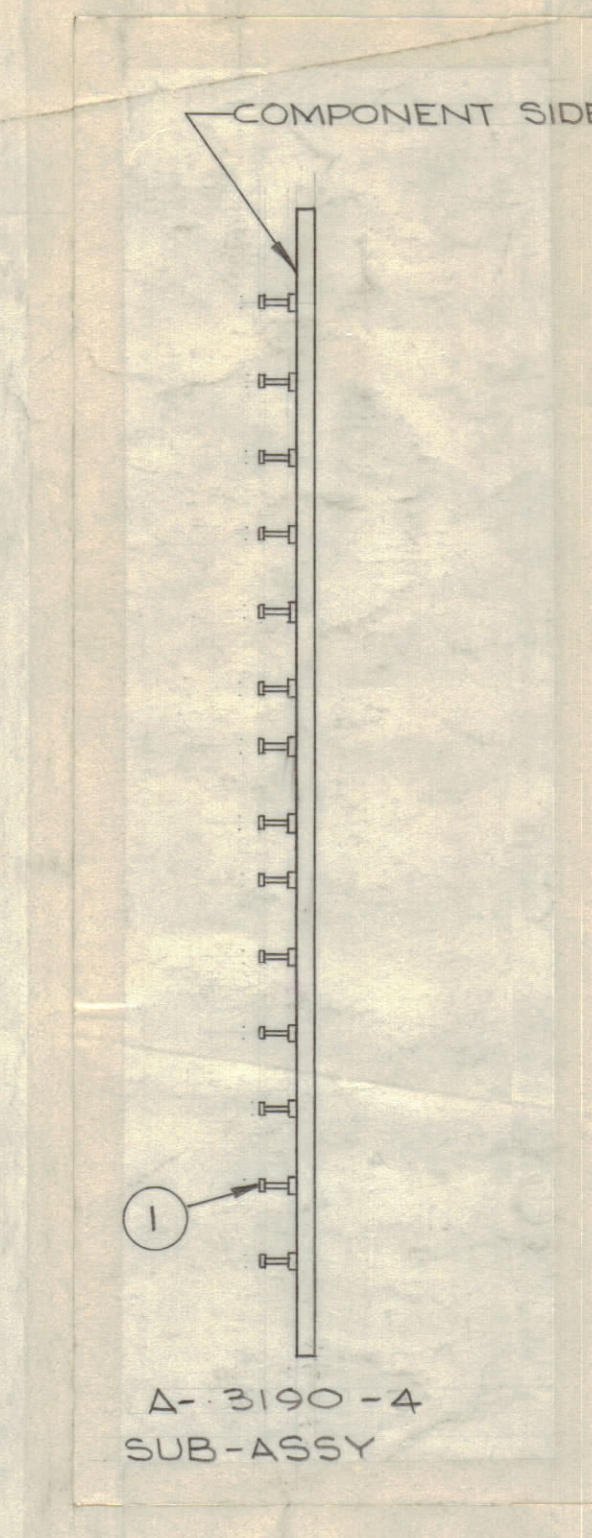
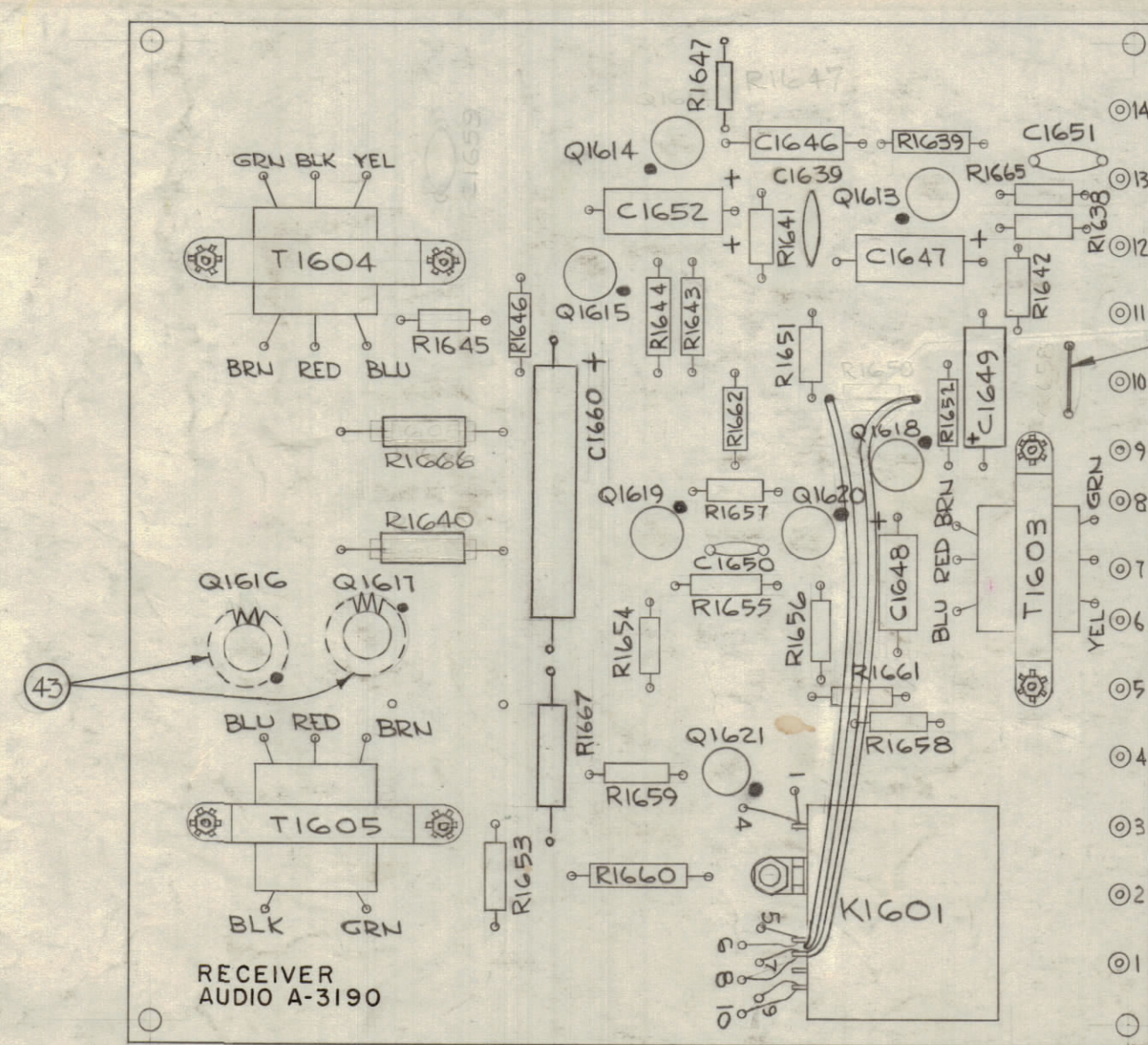


A-3190-3 LETTERING

UNLESS OTHERWISE SPECIFIED:  
 1. ALL LETTERING TO BE 3/32 HIGH WHITE GOthic.  
 2. ALL DOTS TO BE 1/16 DIA. (WHITE)  
 3. MARKING PROCESS: PER TMC SPEC. S727. LOCATE AS SHOWN

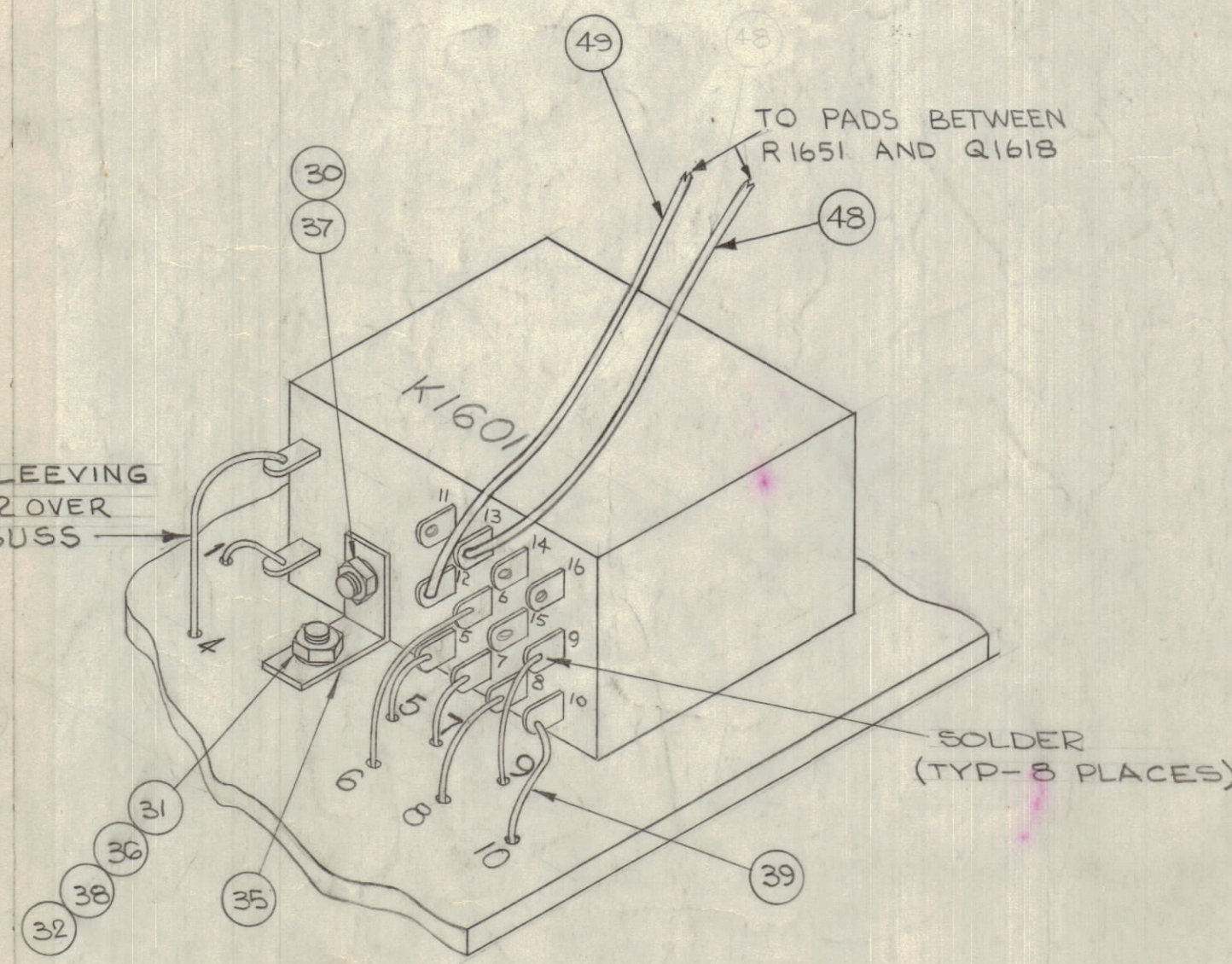


A-3190-4 SUB-ASSY



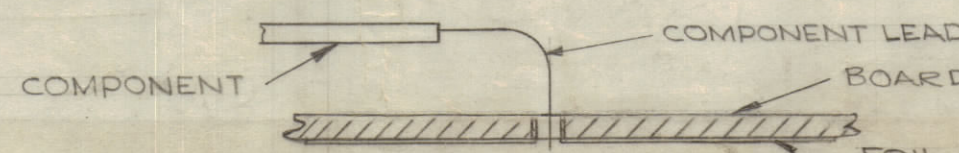
A-3190-5 ELECTRICAL ASSY

NOTE  
 USE SLEEVING  
 ITEM 42 OVER  
 ALL BUSS  
 WIRE



RELAY MOUNTING DETAIL

~ ASSEMBLY NOTICE ~  
 1. TO MOUNT COMPONENTS, INSERT LEAD THROUGH PLATED THRU HOLES AND BEND ABOUT 1/16 OF LEAD OVER COPPER FOIL AS SHOWN.  
 2. APPLY HEAT AND SOLDER TO LEAD AND FOIL ~ CAUTION ~ TOO MUCH HEAT WILL CAUSE FOIL TO SEPARATE FROM THE BOARD.  
 3. CLEAN AND INSPECT AS PER S676



NOTES

		REVISIONS					
ZONE	SYM	DESCRIPTION	DATE	EM. NO.	DRAFT	CHKD	APPD
E3,D99	A	ITEMS 40 THRU 42 ADDED SLEEVING NOTE ADDED, IT.13 WAS 2N1370	5-6-64	11329	WJB	WJB	WJB
C7,B2	B	IT.28 WAS RC32 GF220J, 1" x 4" ON A-3190-3 RELOCAT.	8-11-64	11512	WJB	WJB	WJB
D2,E9	C	IT.4 WAS TF-267-1, IT.12 WAS 2N1038, IT.43 ADDED ON ELEC. ASSY IT.43 ADD, C1659 ADD, + SIGN ADD TO C1649 ON LETTERING C1659 ADD, + SIGN ADD TO C1649	8-25-64	12163	WJB	WJB	WJB
B2,E2	D	ON 1/8" IT WAS RC22GF10J, IT.10, IT.11 WAS 1/4 R1647 ADD, IT.20 (IT.11) WAS 1/4 R1647 ADD, IT.41 DUE, IT.44, 45 ADD. ON PICT IT.37, 44, 45, 46, 47, 48, 49, 50, 51, 52, 53, 54, 55, 56, 57, 58, 59, 60, 61, 62, 63, 64, 65, 66, 67, 68, 69, 70, 71, 72, 73, 74, 75, 76, 77, 78, 79, 80, 81, 82, 83, 84, 85, 86, 87, 88, 89, 90, 91, 92, 93, 94, 95, 96, 97, 98, 99, 100, 101, 102, 103, 104, 105, 106, 107, 108, 109, 110, 111, 112, 113, 114, 115, 116, 117, 118, 119, 120, 121, 122, 123, 124, 125, 126, 127, 128, 129, 130, 131, 132, 133, 134, 135, 136, 137, 138, 139, 140, 141, 142, 143, 144, 145, 146, 147, 148, 149, 150, 151, 152, 153, 154, 155, 156, 157, 158, 159, 160, 161, 162, 163, 164, 165, 166, 167, 168, 169, 170, 171, 172, 173, 174, 175, 176, 177, 178, 179, 180, 181, 182, 183, 184, 185, 186, 187, 188, 189, 190, 191, 192, 193, 194, 195, 196, 197, 198, 199, 200, 201, 202, 203, 204, 205, 206, 207, 208, 209, 210, 211, 212, 213, 214, 215, 216, 217, 218, 219, 220, 221, 222, 223, 224, 225, 226, 227, 228, 229, 230, 231, 232, 233, 234, 235, 236, 237, 238, 239, 240, 241, 242, 243, 244, 245, 246, 247, 248, 249, 250, 251, 252, 253, 254, 255, 256, 257, 258, 259, 260, 261, 262, 263, 264, 265, 266, 267, 268, 269, 270, 271, 272, 273, 274, 275, 276, 277, 278, 279, 280, 281, 282, 283, 284, 285, 286, 287, 288, 289, 290, 291, 292, 293, 294, 295, 296, 297, 298, 299, 300, 301, 302, 303, 304, 305, 306, 307, 308, 309, 310, 311, 312, 313, 314, 315, 316, 317, 318, 319, 320, 321, 322, 323, 324, 325, 326, 327, 328, 329, 330, 331, 332, 333, 334, 335, 336, 337, 338, 339, 340, 341, 342, 343, 344, 345, 346, 347, 348, 349, 350, 351, 352, 353, 354, 355, 356, 357, 358, 359, 360, 361, 362, 363, 364, 365, 366, 367, 368, 369, 370, 371, 372, 373, 374, 375, 376, 377, 378, 379, 380, 381, 382, 383, 384, 385, 386, 387, 388, 389, 390, 391, 392, 393, 394, 395, 396, 397, 398, 399, 400, 401, 402, 403, 404, 405, 406, 407, 408, 409, 410, 411, 412, 413, 414, 415, 416, 417, 418, 419, 420, 421, 422, 423, 424, 425, 426, 427, 428, 429, 430, 431, 432, 433, 434, 435, 436, 437, 438, 439, 440, 441, 442, 443, 444, 445, 446, 447, 448, 449, 450, 451, 452, 453, 454, 455, 456, 457, 458, 459, 460, 461, 462, 463, 464, 465, 466, 467, 468, 469, 470, 471, 472, 473, 474, 475, 476, 477, 478, 479, 480, 481, 482, 483, 484, 485, 486, 487, 488, 489, 490, 491, 492, 493, 494, 495, 496, 497, 498, 499, 500, 501, 502, 503, 504, 505, 506, 507, 508, 509, 510, 511, 512, 513, 514, 515, 516, 517, 518, 519, 520, 521, 522, 523, 524, 525, 526, 527, 528, 529, 530, 531, 532, 533, 534, 535, 536, 537, 538, 539, 540, 541, 542, 543, 544, 545, 546, 547, 548, 549, 550, 551, 552, 553, 554, 555, 556, 557, 558, 559, 560, 561, 562, 563, 564, 565, 566, 567, 568, 569, 570, 571, 572, 573, 574, 575, 576, 577, 578, 579, 580, 581, 582, 583, 584, 585, 586, 587, 588, 589, 590, 591, 592, 593, 594, 595, 596, 597, 598, 599, 600, 601, 602, 603, 604, 605, 606, 607, 608, 609, 610, 611, 612, 613, 614, 615, 616, 617, 618, 619, 620, 621, 622, 623, 624, 625, 626, 627, 628, 629, 630, 631, 632, 633, 634, 635, 636, 637, 638, 639, 640, 641, 642, 643, 644, 645, 646, 647, 648, 649, 650, 651, 652, 653, 654, 655, 656, 657, 658, 659, 660, 661, 662, 663, 664, 665, 666, 667, 668, 669, 670, 671, 672, 673, 674, 675, 676, 677, 678, 679, 680, 681, 682, 683, 684, 685, 686, 687, 688, 689, 690, 691, 692, 693, 694, 695, 696, 697, 698, 699, 700, 701, 702, 703, 704, 705, 706, 707, 708, 709, 710, 711, 712, 713, 714, 715, 716, 717, 718, 719, 720, 721, 722, 723, 724, 725, 726, 727, 728, 729, 730, 731, 732, 733, 734, 735, 736, 737, 738, 739, 740, 741, 742, 743, 744, 745, 746, 747, 748, 749, 750, 751, 752, 753, 754, 755, 756, 757, 758, 759, 760, 761, 762, 763, 764, 765, 766, 767, 768, 769, 770, 771, 772, 773, 774, 775, 776, 777, 778, 779, 780, 781, 782, 783, 784, 785, 786, 787, 788, 789, 790, 791, 792, 793, 794, 795, 796, 797, 798, 799, 800, 801, 802, 803, 804, 805, 806, 807, 808, 809, 810, 811, 812, 813, 814, 815, 816, 817, 818, 819, 820, 821, 822, 823, 824, 825, 826, 827, 828, 829, 830, 831, 832, 833, 834, 835, 836, 837, 838, 839, 840, 841, 842, 843, 844, 845, 846, 847, 848, 849, 850, 851, 852, 853, 854, 855, 856, 857, 858, 859, 860, 861, 862, 863, 864, 865, 866, 867, 868, 869, 870, 871, 872, 873, 874, 875, 876, 877, 878, 879, 880, 881, 882, 883, 884, 885, 886, 887, 888, 889, 890, 891, 892, 893, 894, 895, 896, 897, 898, 899, 900, 901, 902, 903, 904, 905, 906, 907, 908, 909, 910, 911, 912, 913, 914, 915, 916, 917, 918, 919, 920, 921, 922, 923, 924, 925, 926, 927, 928, 929, 930, 931, 932, 933, 934, 935, 936, 937, 938, 939, 940, 941, 942, 943, 944, 945, 946, 947, 948, 949, 950, 951, 952, 953, 954, 955, 956, 957, 958, 959, 960, 961, 962, 963, 964, 965, 966, 967, 968, 969, 970, 971, 972, 973, 974, 975, 976, 977, 978, 979, 980, 981, 982, 983, 984, 985, 986, 987, 988, 989, 990, 991, 992, 993, 994, 995, 996, 997, 998, 999, 1000					

4'	49	MWC 22 (7) U5	WIRE, INSULATED		GRN.
4'	48	MWC 22 (7) U7	WIRE, INSULATED		VIO.
1	47	CE-105-200-15	CAPACITOR, FIXED, ELECTROLYTIC		C1660
1	46	RC42GF270J	RESISTOR, FIXED, COMPOSITION		R1667
9	45	PX 829-1	PAD, TRANSISTOR		
6	44	SCBPO440BN4	SCREW, MACHINE		
2	43	HD 101-1	HEATSINK, RADIATOR		ES1616 ER1616
0-04	42	PX-104-2-022	SLEEVING, SIZE 24		YELL
	41	DELETED			
1	40	CC-100-16	CAPACITOR, FIXED, CERAMIC		C1639
0-04	39	WL-100-8	WIRE, BUSS, SIZE 24		
1	38	FVOGHBN	WASHER, FLAT		
7	37	LWEO4MRN	WASHER, LOCK, EXT		
1	36	LWEO6MRN	WASHER, LOCK, EXT		
1	35	TE-200	EKT, ANGLE		
#	34	#	#		
#	33	#	#		
1	32	SCBPO632BN5	SCREW, MACHINE		
1	31	NTHO632BN8	NUT, HEX		
7	30	NTHO440BN8	NUT, HEX		
X	29	BS-100	SOLDER, SOFT		
2	28	RC42GF220J	RESISTOR, FIXED, COMPOSITION		R1640 R1666
1	27	RC20GF100			R1646
1	26	471			R1661
1	25	681			R1645
1	24	102			R1654
1	23	182			R1662
2	22	222			R1653 R1658
4	21	332			
1	20	392			R1652
2	19	472			R1639 R1665
3	18	103			
1	17	223			R1657
2	16	104			R1647 R1655
1	15	RC20GF330J			R1659
1	14	RC32GF3R3J	RESISTOR, FIXED, COMPOSITION		R1660
5	13	TX107	TRANSISTOR		Q1619
2	12	2N1039	TRANSISTOR		Q1621
1	11	2N2001	TRANSISTOR		Q1618
1	10	CC-100-28	CAPACITOR, FIXED, CERAMIC, DISC		C1651
1	9	TX108	TRANSISTOR		Q1618
1	8	CC-100-29	CAPACITOR, FIXED, CERAMIC DISC		C1650
3	7	CE-105-50-15	CAPACITOR, FIXED, ELECTROLYTIC		
2	6	CE-105-10-15	CAPACITOR, FIXED, ELECTROLYTIC		C1646 C1648
1	5	TF-267-2	TRANSFORMER, AUDIO		T1604
1	4	TF-267-5	TRANSFORMER, AUDIO		T1605
1	3	TF-267-3	TRANSFORMER, AUDIO		T1603
1	2	RL-156-2	RELAY, ARM., 4P2T		K1601
14	1	TE-127-3	TERMINAL, STUD USE		

REQ'D.	ITEM	PART NUMBER	DESCRIPTION	SYMBOL
KOHN (PALMER) LIST OF MATERIAL				
MATERIAL			THE TECHNICAL MATERIEL CORP. MAMARONECK, NEW YORK	
FINISH			TITLE PRINTED CIRCUIT BOARD ASSY RECEIVER AUDIO	
SCALE DO NOT SCALE			DRAWN MAMARONECK	
CODE A			DATE 10/16/63	
MODEL USED ON TTR-10			DATE 10/16/63	
ASSY. NO. A-2784			DATE 10/16/63	
UNLESS OTHERWISE SPECIFIED DIMENSIONS ARE IN INCHES AND INCLUDE CHEMICALLY APPLIED OR PLATED FINISHES			DATE 10/16/63	
THE CONTENTS OF THIS DRAWING ARE THE EXCLUSIVE PROPERTY OF THE TECHNICAL MATERIEL CORP. ITS UNAUTHORIZED USE OR REPRODUCTION IN WHOLE OR IN PART IS STRICTLY FORBIDDEN.			DATE 10/16/63	
DECIMALS X ± .05 XX ± .01 XXX ± .005			DATE 10/16/63	
FRACTIONS ± 1/64 ANGLES ± 0° 30'			DATE 10/16/63	
ELECT. DES. RON KOHN			DATE 10/16/63	
MECH. DES. RON KOHN			DATE 10/16/63	
SHEET 2 of 2			REV. LTR.	