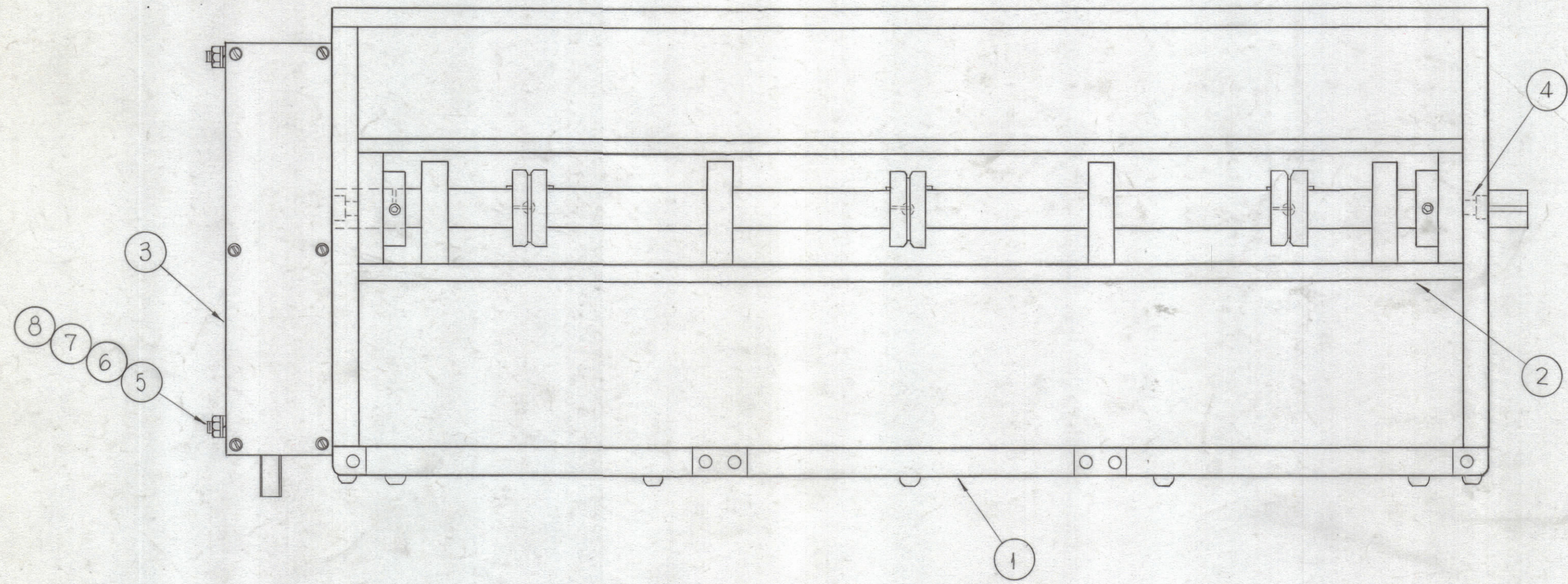


| REVISIONS | | | | | | | |
|-----------|-----|---------------------------------|--------|------------|-------|------|------|
| ZONE | SYM | DESCRIPTION | DATE | E.M.N. NO. | DRAFT | CHKD | APPD |
| 0 | | ORIGINAL RELEASE FOR PRODUCTION | 3-3-64 | | | | |



A-3185
0

| REQ'D. | ITEM | PART NUMBER | DESCRIPTION | SYMBOL |
|--------|------|-----------------|---------------------|--------|
| 4 | 8 | NTH 2520 BN 14 | NUT, HEX | |
| 4 | 7 | LWS 25MRN | LOCKWASHER, SPLIT | |
| 4 | 6 | FW 25HBN | WASHER, FLAT | |
| 4 | 5 | SM 2520BN 2,750 | ROD, THREADED | |
| 4 | 4 | SC-155-2520SS 8 | SCREW, SOCKET HEAD | |
| 1 | 3 | A-3239 | CAP. GEAR BOX ASS'Y | |
| 1 | 2 | A-3238 | PULLEY BOX ASS'Y | |
| 1 | 1 | A-3237 | MOUNTING BOX ASS'Y | |

| F. BUDETTI LIST OF MATERIAL | | | |
|---|--|---|-------------------------------|
| MATERIAL | THE TECHNICAL MATERIEL CORP. MAMARONECK, NEW YORK | | |
| FINISH | TITLE | | |
| | CAP. MTG. & DRIVE ASS'Y | | |
| UNLESS OTHERWISE SPECIFIED DIMENSIONS ARE IN INCHES AND INCLUDE CHEMICALLY APPLIED OR PLATED FINISHES | DRAWN SRG | DATE 10-25-63 | FINAL APPROVAL [Signature] |
| | CHECKED aa 2/18 | DATE 3-2-64 | |
| DECIMALS .X ± .05 .XX ± .01 .XXX ± .005 | TOLERANCES | FRACTIONS ± 1/64 ANGLES ± 0° 30' | ELECT. DES. [Signature] |
| | | | MECH. DES. [Signature] |
| | | | DATE A-3185 |
| | | | SHEET 0 |

| | | |
|------------------|-------------------|------------|
| 1 | GPT-200R (AX-395) | A-2822 |
| Q'TY./UNIT | MODEL USED ON | ASS'Y. NO. |
| SCALE 1/2"=1" | CODE A | |

NOTES

THE CONTENTS OF THIS DRAWING ARE THE EXCLUSIVE PROPERTY OF THE TECHNICAL MATERIEL CORP. ITS UNAUTHORIZED USE OR REPRODUCTION IN WHOLE OR IN PART IS STRICTLY FORBIDDEN.