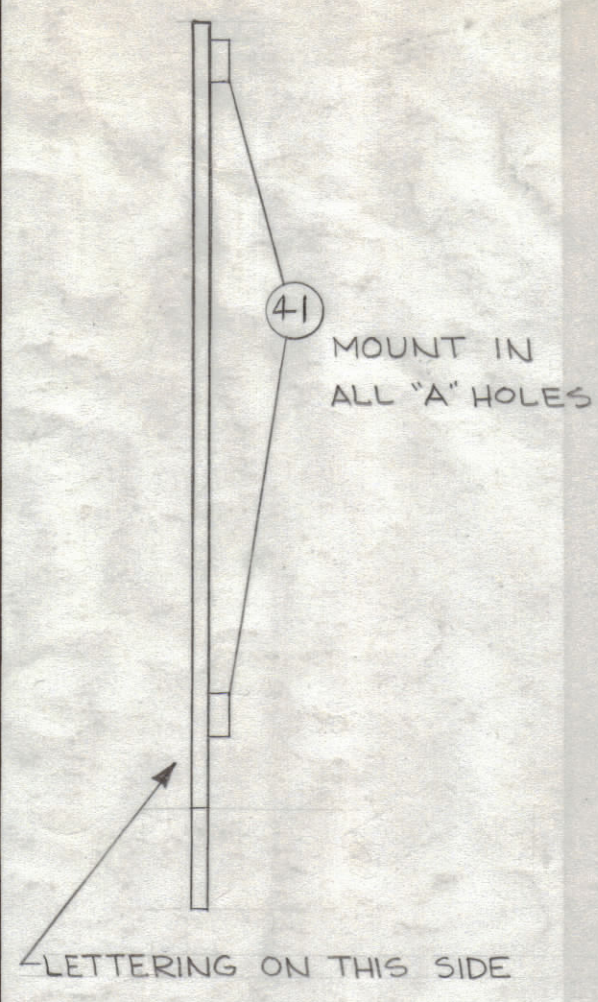
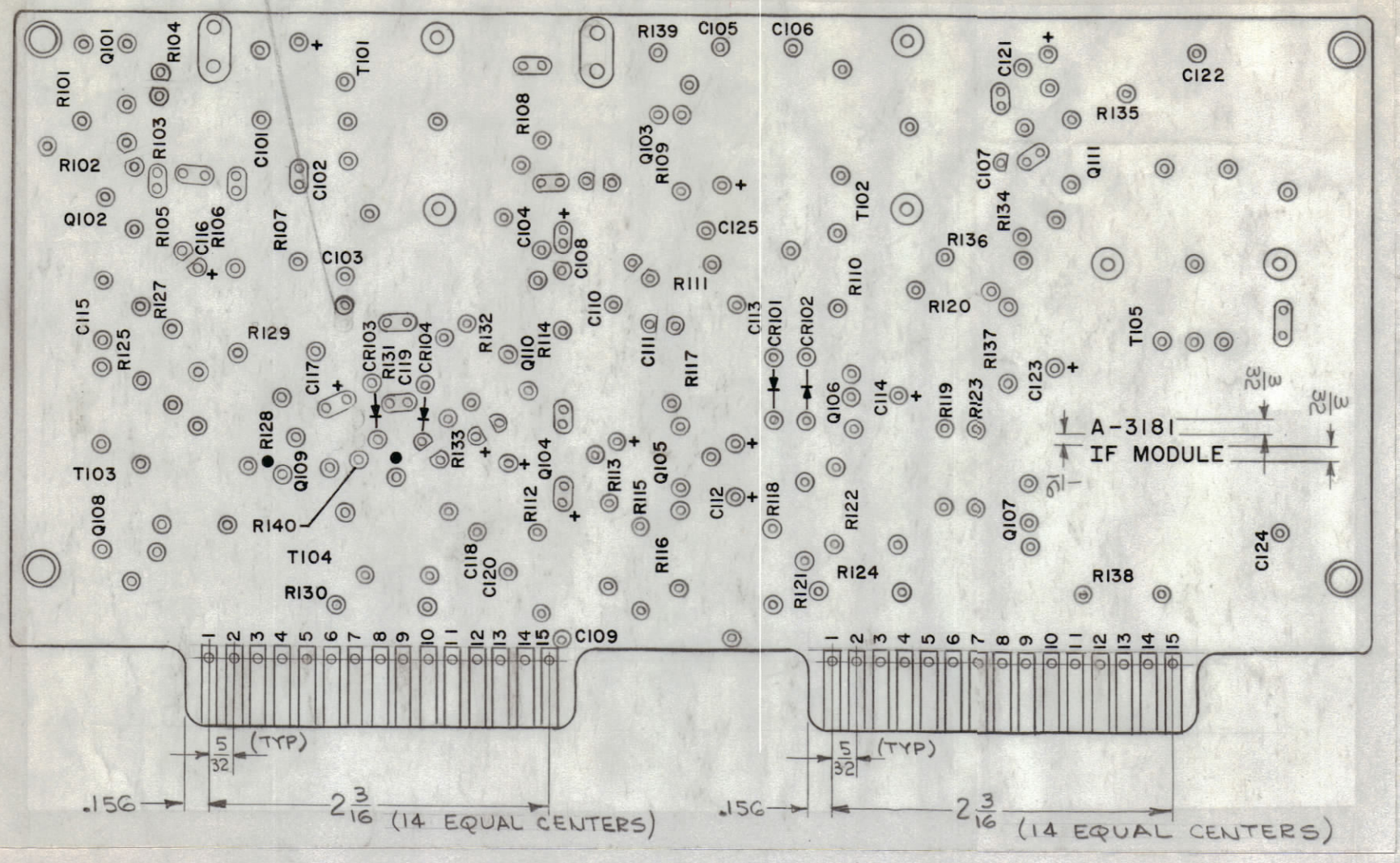
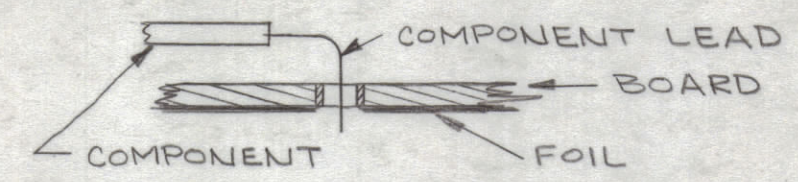


REVISIONS						
ZONE	SYM	DESCRIPTION	DATE	E.M.N. NO.	DRAFT	CHKD APPD
+	C	IT(1) SYM. R130 DELE; IT.(48) RC20GF182K (R130) ADDED. IT.(18) SYM. R129 DELE; IT. (2) SYM. R129 ADDED.	11-9-64	128 58		



~ASSEMBLY NOTICE~

- TO MOUNT COMPONENTS, INSERT LEAD THROUGH PLATED-THRU HOLES & BEND ABOUT 1/16 OF LEAD OVER COPPER FOIL AS SHOWN.
- APPLY HEAT & SOLDER TO LEAD & FOIL - CAUTION - TOO MUCH HEAT WILL CAUSE THE FOIL TO SEPARATE FROM THE BOARD.
- CLEAN & INSPECT PER SPEC S-676.
- FUNGUS PROOFING PER TMC SPECIFICATION S113



QTY	SYM	PART NUMBER	DESCRIPTION	SYMBOL
1	48	RC20GF182K	RESISTOR, FIXED, COMPOSITION	R130
X	47	BS-100	SOLDER, SOFT	
X	46	WL-100-6	WIRE, BUSS BAR, TINNED #20	
6	45	NTH0440BN8	NUT, HEX.	
10	44	LW104MRN	LOCKWASHER, INTERNAL	
10	43	SCBP0440BN4	SCREW, MACHINE	
2	42	MS-3392	BRACKET, MOUNTING	
4	41	TE-104-7	STANDOFF, RIVET TYPE	
9	40	2N396A (TX101-I)	TRANSISTOR	
2	39	2N214A	TRANSISTOR	Q106,107
1	38	1N100	SEMI COND. DEVICE, DIODE	CR102
3	37	1N34A	SEMI COND. DEVICE, DIODE	CR101,3,4
1	36	TR-183	TRANSFORMER, RF	T104
1	35	TR-182	TRANSFORMER, R.F.	T103
1	34	TT-198	TRANSFORMER, R.F., TUNED	T105
1	33	TT-197	TRANSFORMER, R.F., TUNED	T102
1	32	TT-199	TRANSFORMER, R.F., TUNED	T101
3	31	CX-104-58	POLYSTYRENE CAPACITOR	
2	30	CC-100-35	CAPACITOR, FIXED, CERAMIC DISC.	C108,111
2	29	CC-100-34	CAPACITOR, FIXED, CERAMIC DISC.	C101,115
1	28	CC-100-33	CAPACITOR, FIXED, CERAMIC DISC.	C107
2	27	CC-100-27	CAPACITOR, FIXED, CERAMIC DISC.	C104,121
1	26	CC-100-16	CAPACITOR, FIXED, CERAMIC DISC.	C119
1	25	CE-105-75-15	MINIATURE, ELECTROLYTIC CAP.	C114
10	24	CE-105-25-15	MINIATURE, ELECTROLYTIC CAP.	
1	23	CE-105-6-15	MINIATURE, ELECTROLYTIC CAP.	C118
1	22	CE-105-2-15	MINIATURE, ELECTROLYTIC CAP.	C117
1	21	CE-105-1-15	MINIATURE, ELECTROLYTIC CAP.	C120
2	20	RV106UX9B102A	RESISTOR, VARIABLE COMPOSITION	R104,139
1	19	RC20GF822K	RESISTOR, FIXED, COMPOSITION	R120
2	18	RC20GF682K	RESISTOR, FIXED, COMPOSITION	
1	17	RC20GF681K	RESISTOR, FIXED, COMPOSITION	R135
4	16	RC20GF562K	RESISTOR, FIXED, COMPOSITION	
1	15	RC20GF473K	RESISTOR, FIXED, COMPOSITION	R132
3	14	RC20GF471K	RESISTOR, FIXED, COMPOSITION	
1	13	RC20GF393K	RESISTOR, FIXED, COMPOSITION	R131
3	12	RC20GF392K	RESISTOR, FIXED, COMPOSITION	
1	11	RC20GF333K	RESISTOR, FIXED, COMPOSITION	R119
2	10	RC20GF332K	RESISTOR, FIXED, COMPOSITION	R112,115
1	9	RC20GF273K	RESISTOR, FIXED, COMPOSITION	R118
1	8	RC20GF272K	RESISTOR, FIXED, COMPOSITION	R140
1	7	RC20GF223K	RESISTOR, FIXED, COMPOSITION	R106
1	6	RC20GF222K	RESISTOR, FIXED, COMPOSITION	R138
1	5	RC20GF221K	RESISTOR, FIXED, COMPOSITION	R123
4	4	M		R121,125
2	3	RC20GF123K	RESISTOR, FIXED, COMPOSITION	
6	2	RC20GF103K	RESISTOR, FIXED, COMPOSITION	
4	1	RC20GF102K	RESISTOR, FIXED, COMPOSITION	

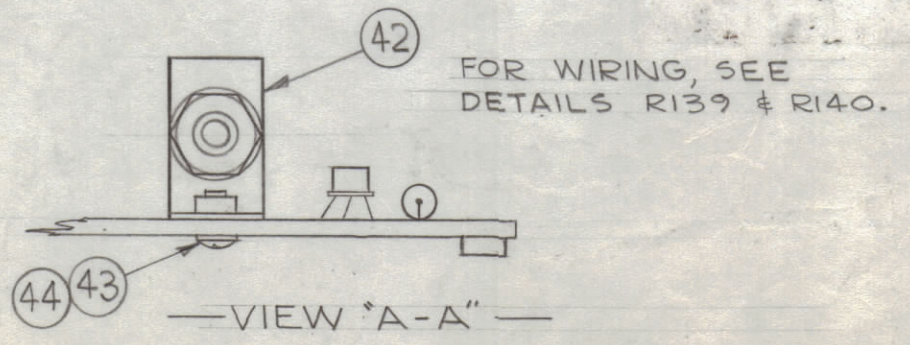
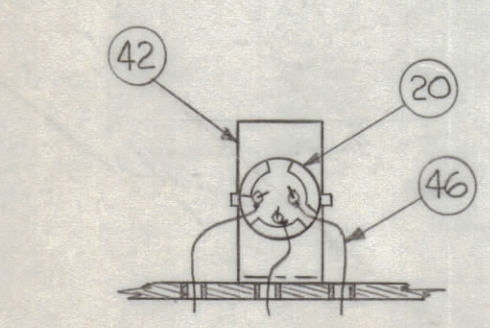
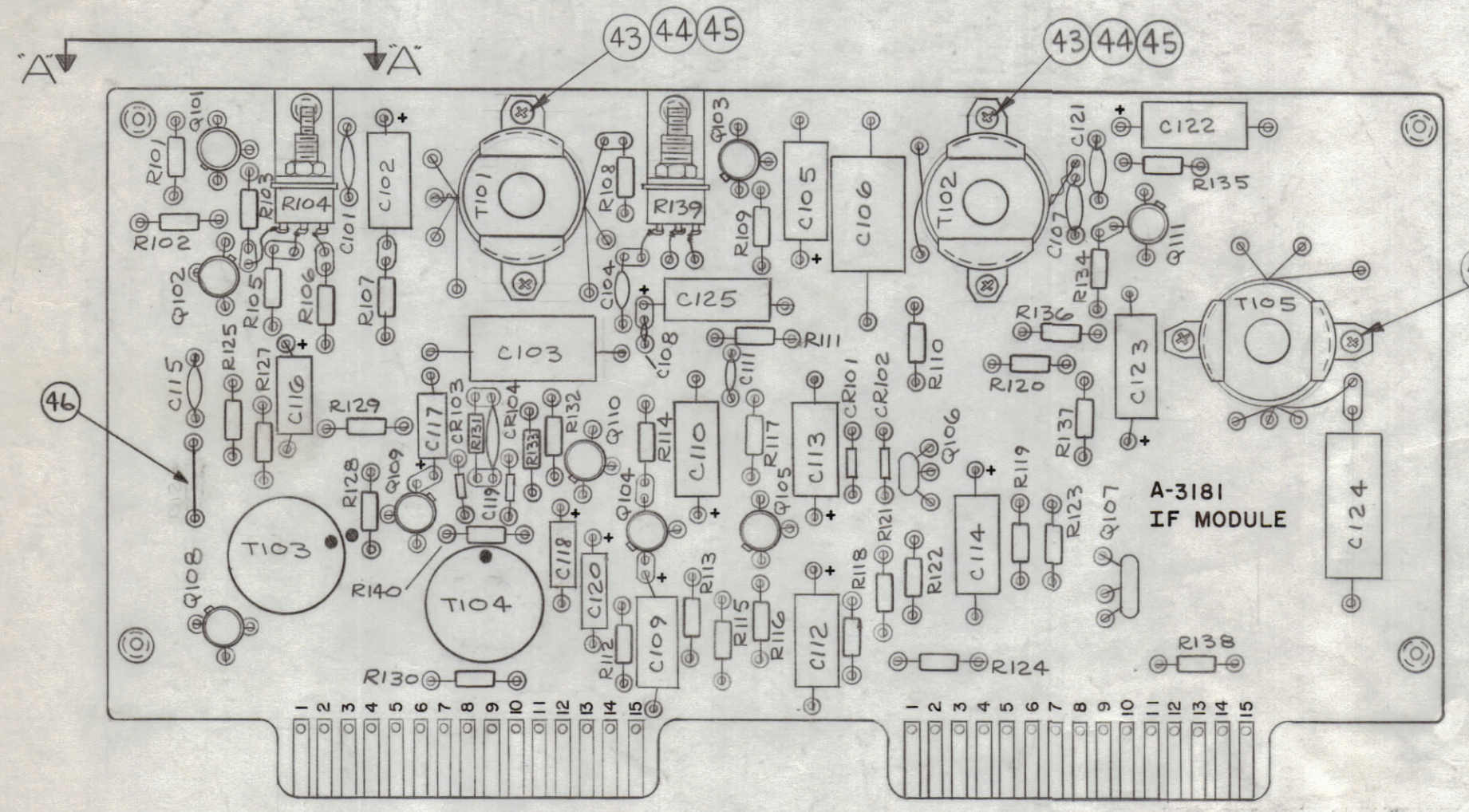
SUB-ASSY
(A-3181-4)

ELECTRICAL ASSY
(A-3181-5)

~UNLESS OTHERWISE SPECIFIED~

- MARKING PROCESS; PER TMC SPEC. S-727.
- LETTERING TO BE 5/64 HIGH, BLACK GOTHIC, .010 STROKE.
- ALL DOTS TO BE 1/16 DIA.
- MARK TMC PART NO. WITH THE LATEST REVISION LETTER

MARKING (A-3181-3)



FOR WIRING, SEE
DETAILS R139 & R140.

REF: CK-G78

Q'TY/UNIT	MODEL USED ON	ASS'Y. NO.
1	VLR-1	AX-425
SCALE	CODE	
1:1		

M. GELLMAN		LIST OF MATERIAL	
MATERIAL		THE TECHNICAL MATERIEL CORP. MAMARONECK, NEW YORK	
FINISH		TITLE PRINTED CIRCUIT BOARD, ASSY. (IF MODULE)	
DRAWN G. J. ...	DATE 11-22-63	FINAL APPROVAL [Signature]	DATE
CHECKED	DATE		
ELECT. DES. [Signature]	DATE	A-3181	
MECH. DES. [Signature]	DATE 5-7-64	SHEET	2 OF 2
UNLESS OTHERWISE SPECIFIED DIMENSIONS ARE IN INCHES AND INCLUDE CHEMICALLY APPLIED OR PLATED FINISHES		REV. LTR.	
DECIMALS X ± .05 XX ± .01 XXX ± .005	FRACTIONS ± 1/64 ANGLES ± 0° 30'		

NOTES

THE CONTENTS OF THIS DRAWING ARE THE EXCLUSIVE PROPERTY
OF THE TECHNICAL MATERIEL CORP. ITS UNAUTHORIZED USE OR
REPRODUCTION IN WHOLE OR IN PART IS STRICTLY FORBIDDEN.