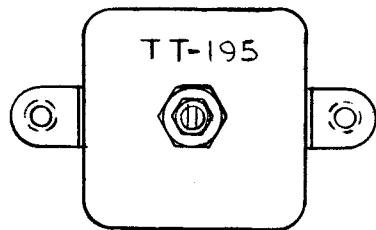
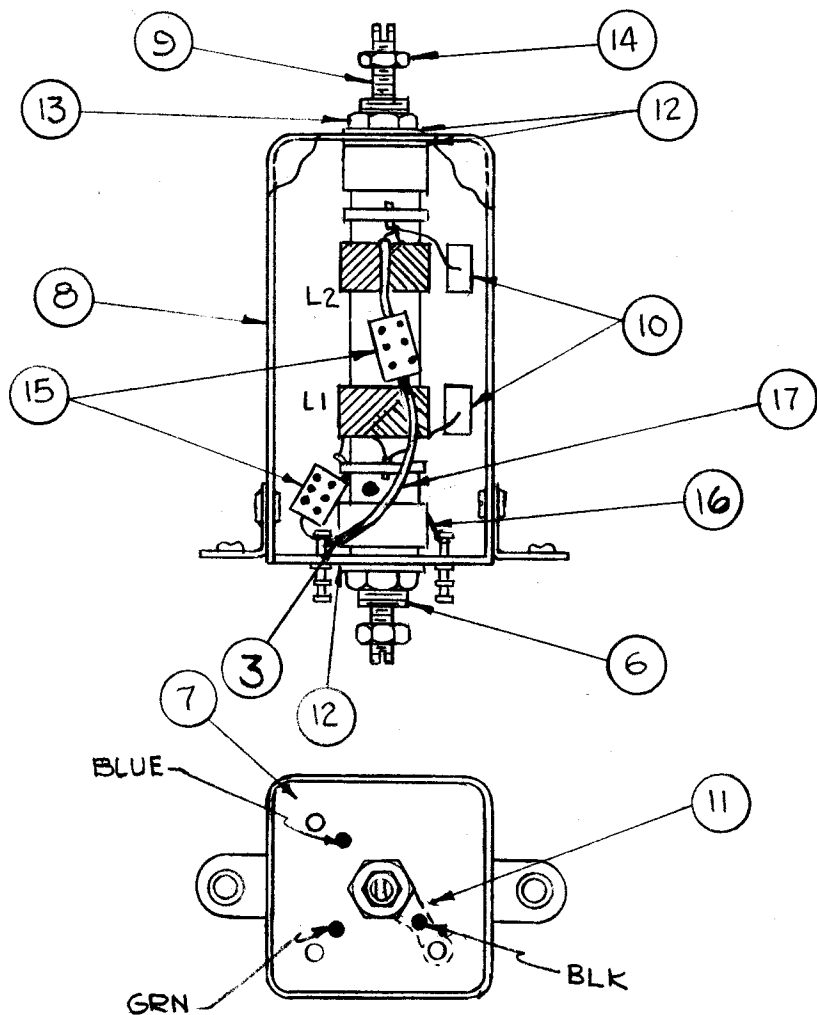


THE CONTENTS OF THIS DRAWING ARE THE EXCLUSIVE PROPERTY OF THE TECHNICAL MATERIEL CORP. ITS UNAUTHORIZED USE OR REPRODUCTION IN WHOLE OR IN PART IS STRICTLY FORBIDDEN.

STAMP CAN AS SHOWN 1/8 HIGH BLACK GOTHIC.
NOTE: STAMP TMC INSIGNIA AND APPROVAL ON SIDE OF CAN.



CEMENT COIL FORMS TO BUSHINGS WITH GL-103.



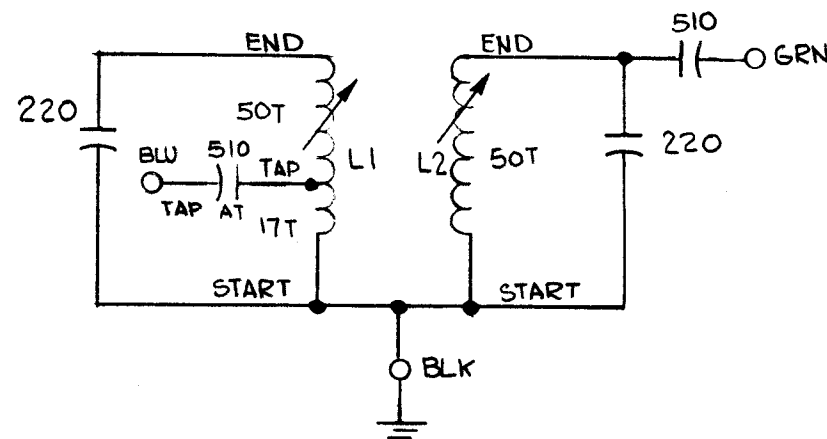
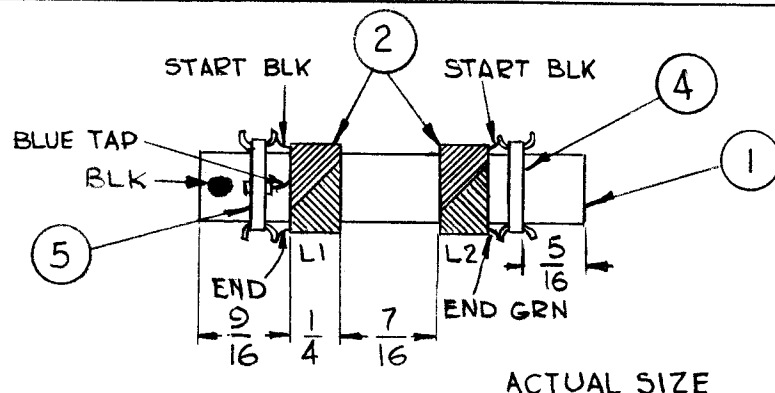
COLOR CODE TERMINAL BOARD AS SHOWN.

WINDING MACHINE DATA

CAM GEAR - 106
DRIVER GEAR - 69
CAM - .250

WINDING DATA

1. START WINDING L1 9/16" FROM END OF FORM.
2. TAP COIL AT 17 TURNS AND END WINDING AT 50 TURNS.
3. KEEP ALL LEADS APPROXIMATELY 2" LONG.
4. STAKE LEADS TO COIL WITH ITEM 20 (GL-103).
5. START WINDING L2 7/16" FROM END OF WINDING L1.
6. END WINDING AT 50 TURNS.
7. STAKE LEADS TO COIL FORM.
8. BAKE FOR 1/2 HOUR AT 215°F.
9. IMMEDIATELY APPLY COATING GL-104-2 (ITEM 19).
10. BAKE HARD FOR 1/2 HOUR AT 215°F.
11. TEST AS SHOWN IN TEST DATA.
12. ASSEMBLE AS SHOWN.



SCHEMATIC DIAGRAM

TEST DATA (WITHOUT CORE)

WINDING L1:
INDUCTANCE = 24.5 ± 1.0 μh
Q = 65 OR GREATER
FREQUENCY = 2.5 MC

WINDING L2:
INDUCTANCE = 24.5 ± 1.0 μh
Q = 65 OR GREATER
FREQUENCY = 2.5 MC

USE BOONTON CORP. Q-METER MODEL 160A OR EQUIVALENT.

X	20	GL-103	CEMENT, DUCCO	
X	19	GL-104-2	INSULEX, U85	
X	18	BS-100	SOLDER, SOFT	
X	17	PX-104-4-.034	SLEEVING, INSULATION	GREEN
X	16	PX-104-1-.034	SLEEVING, INSULATION	BLACK
2	15	CM15B511K	CAPACITOR, FIXED, MICA	
2	14	NTH0632BN8	NUT, HEX	
2	13	NTH2528BN14	NUT, HEX	
3	12	LWI25MRN	LOCKWASHER, INTERNAL	
1	11	TE-104-5	LUG, TERMINAL	
2	10	CM15B221K	CAPACITOR, FIXED, MICA	
2	9	CI-109-7	CORE, TUNING	
1	8	A-1513	CAN ASSEMBLY	
1	7	PX-647	TERMINAL BOARD	
2	6	SM-145	BUSHING, COIL MOUNTING	
1	5	TE-170-3	TERMINAL, COLLAR	
1	4	TE-170-2	TERMINAL, COLLAR	
X	3	WL-100-8	WIRE, BUSS #24	
X	2	WI-104-341-SCP	WIRE, LITZ	
1	1	CF-117-2.00	COIL FORM, 3/8 O.D.	

REQ.	ITEM	PART NO.	DESCRIPTION	SYMBOL
			O.POSE	
THE TECHNICAL MATERIEL CORP. MAMARONECK, NEW YORK				
TT-195 ASSEMBLY (TRANSFORMER, R.F., TUNED)				
GDL			6/5/63	TFH 6-14-63
TYPE & TEMPER		HEAT TREAT. SPEC.	DRAWN	CHECKED
FINISH & SPEC. NO.		ELEC. DES. APP.	MECH. DES. APP.	A-3161

A-3161

SYM	DESCRIPTION	DATE	CH. NO.	DRAFTS	CHECKER	ENG. APP.
UNLESS OTHERWISE SPECIFIED:						
DIMENSIONS ARE IN INCHES		SCALE: NONE				
TOLERANCES ON FRACTIONS ± 1/64		MAXIMUM ALLOWABLE TOLERANCES HAVE BEEN DETERMINED AND ANY DEVIATIONS WILL BE CAUSE FOR REJECTION.				
DECIMALS ± .005		REMOVE ALL BURRS AND SHARP EDGES				
ANGLES ± 1/2°						

1	LFA-4			5-22-63
REQ. PER UNIT	MODEL	SECTION	ASS'Y. NO.	DATE
USED ON				