

REVISIONS							
ZONE	SYM	DESCRIPTION	DATE	E.M.N. NO.	DRAFT	CHKD	APPD
	A	SEE SHEET 2 OF 2 REV. "A"	9.1.64		WB	MB	
	B	* NOTE ADDED; ON SPECS. PLATING WAS "TIN LEAD" PLATING WAS ".0003"	3-18-65	13622	RF	MB	
	C	RESCALED CUTOUT AT LEFT & AD 13/32	9-5-72	20868	GE	EF	EF

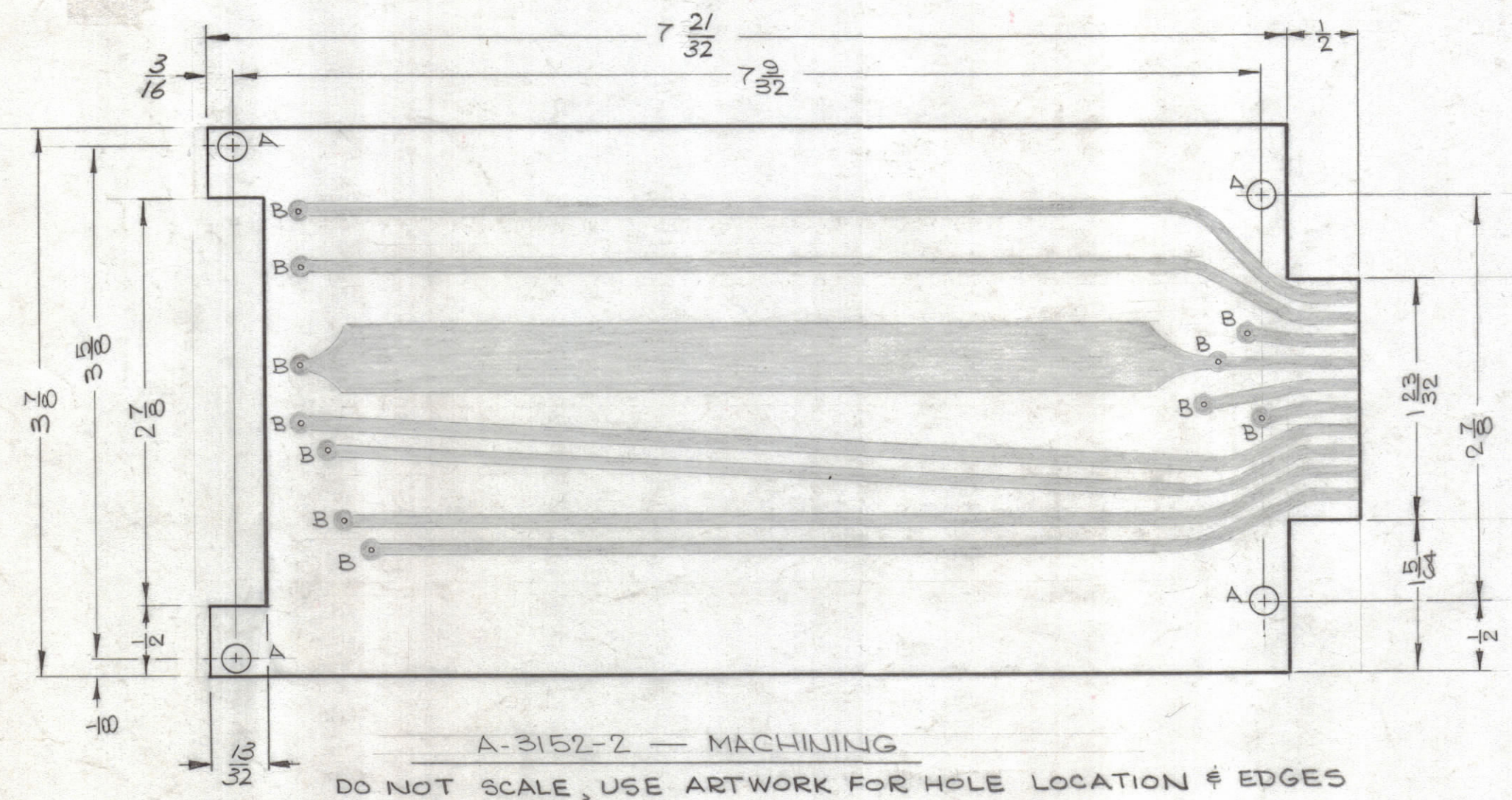


PRINTED CIRCUIT A-3152 *
SCALE - 1:1
CAUTION - THIS SIDE UP WHEN PRINTING

A-3152-1 - ETCHING

* MARK TMC PART NO. WITH LATEST REVISION LETTER.

FINISHED HOLE & PAD SPECIFICATIONS			
HOLE	HOLE DIA	PAD DIA	QUANTITY REQ
A	.189	NONE	4
B	.050	.160	11



A-3152-2 - MACHINING

DO NOT SCALE, USE ARTWORK FOR HOLE LOCATION & EDGES

- ~ SPECIFICATIONS ~
- BASE MATERIAL: EPOXY G-10, 3/32 THICK
 - FINISH: SEAL ALL EDGES
 - COPPER FOIL: .0027 MIN. THK (2 oz.)
 - PLATING: DIP SOLDER, ALL CONDUCTORS .0003 MIN. THK.

- ~ NOTES ~
- NOT LETTER DESIGNATIONS ON CIRCUIT DENOTE HOLE SIZE - DO NOT PRINT
 - THE .050 DIA. HOLES ARE TO BE PLATED THROUGH OR EYELETTED. IF PLATED, THERE MUST BE A MINIMUM COPPER THICKNESS OF .0015 AT ANY POINT WITHIN THE HOLE. EYELETTED HOLES ARE TO BE AS PER DETAIL
 - SOLDER PLATING AS PER TMC SPEC. S-735 THICKNESS MUST BE A MINIMUM OF .0005 PER TMC SPEC. S-735. THE EYELET DIA. OF THE PLATED HOLE SHALL BE AS PER DETAIL
-

THE ORIGINAL ART WORK TO BE SUPPLIED BY TMC FOR PHOTOGRAPHING (SCALE 1:1)

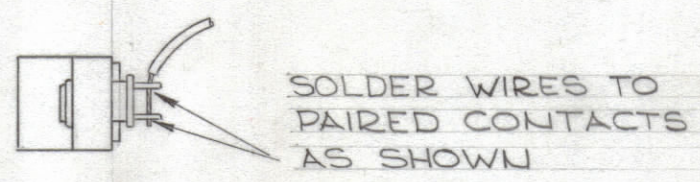
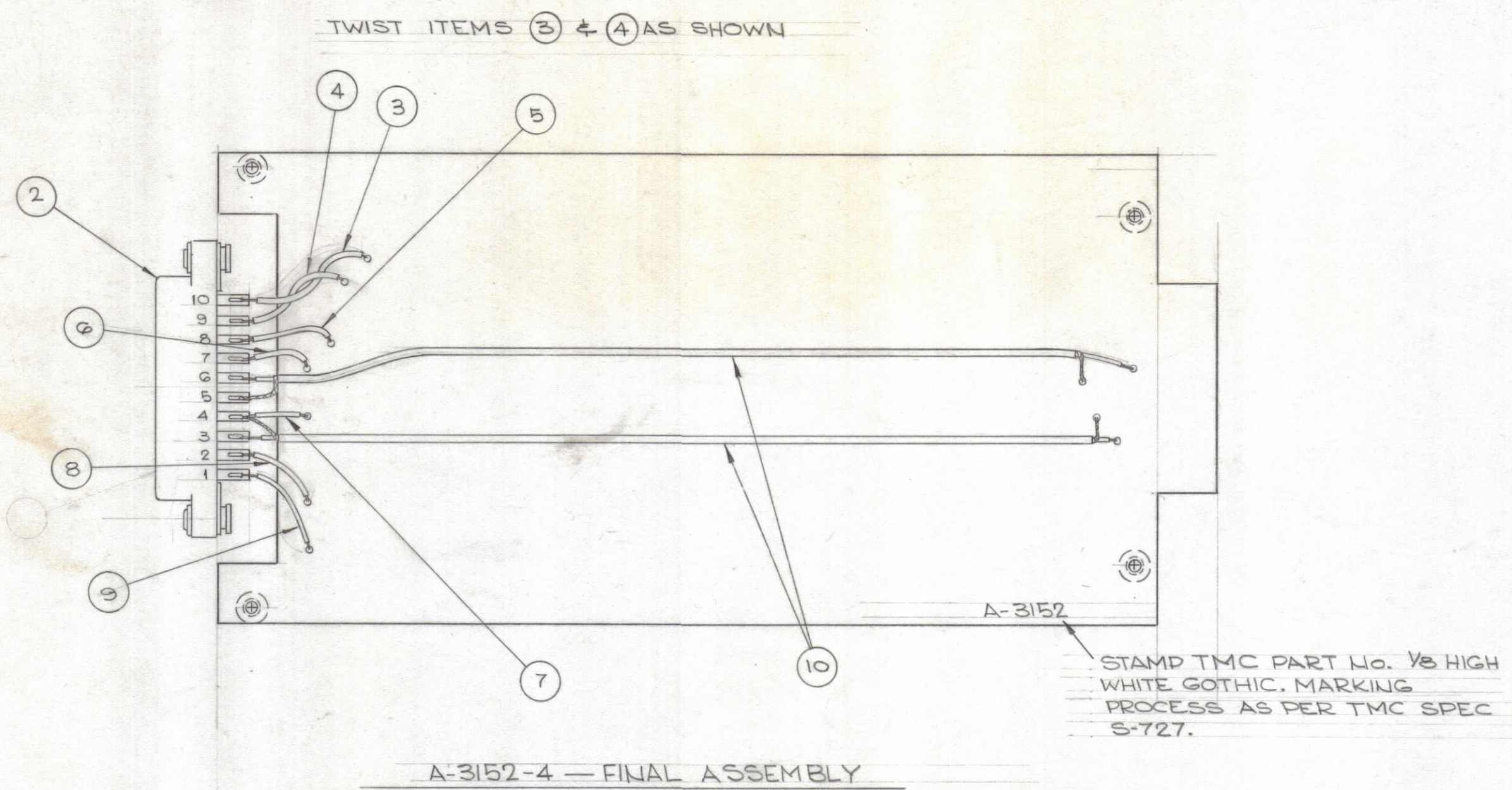
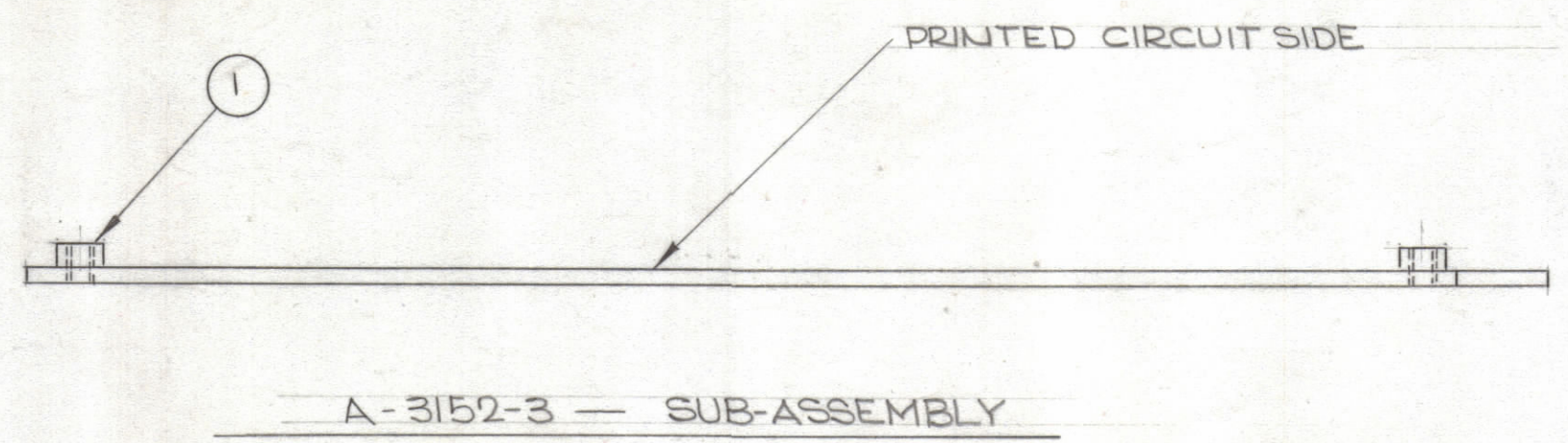
REQ'D.	ITEM	PART NUMBER	DESCRIPTION	SYMBOL
KOHN LIST OF MATERIAL				
MATERIAL		THE TECHNICAL MATERIEL CORP. MAMARONECK, NEW YORK		
FINISH		TITLE PRINTED CIRCUIT BOARD ASSY EXTENSION MODULE		
UNLESS OTHERWISE SPECIFIED DIMENSIONS ARE IN INCHES AND INCLUDE CHEMICALLY APPLIED OR PLATED FINISHES		DRAWN: Ron Kohn CHECKED: JDe DATE: 9/30/63 DATE: 10/1/63 DATE: 10/16/63 DATE: 10/16/63	FINAL APPROVAL: [Signature] DATE: 10/16/63 DATE: 10/16/63	DATE: [Blank] DATE: [Blank]
DECIMALS	TOLERANCES	FRACTIONS	A-3152	
X ± .05		± 1/64	C	
.XX ± .01		ANGLES ± 0° 30'	SHEET 1 OF 2	
.XXX ± .005			REV. LTR.	

NOTES

THE CONTENTS OF THIS DRAWING ARE THE EXCLUSIVE PROPERTY OF THE TECHNICAL MATERIEL CORP. ITS UNAUTHORIZED USE OR REPRODUCTION IN WHOLE OR IN PART IS STRICTLY FORBIDDEN.

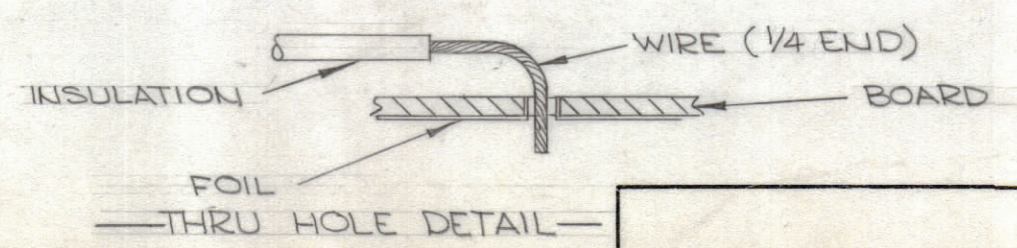
A-3152
C

REVISIONS							
ZONE	SYM	DESCRIPTION	DATE	E.M.N. NO.	DRAFT	CHKD	APPD
	A	CLERICAL CHANGE	9.1.64	-	WP		
	B	SEE SHEET 1 OF 2 REV. "B"	7-18-65	13622	24		
	C	SEE SHEET 1	9-5-72	20868	GE		



— CONNECTOR WIRING DETAIL —

- ~ ASSEMBLY NOTES ~
- ON SHIELDED WIRES, BREAK OUT SHIELDING 3/4 IN. AND MOUNT AS FOLLOWS.
 - TO MOUNT WIRES, STRIP BACK INSULATION 3/8 IN. ON ONE END AND 1/4 IN. ON THE OTHER END. SOLDER 3/8 END TO CONNECTOR AND INSERT 1/4 IN. END THROUGH PLATED "THRU HOLE" AS SHOWN.
 - APPLY HEAT & SOLDER TO WIRE & FOIL ~ CAUTION ~ TOO MUCH HEAT WILL CAUSE FOIL TO SEPARATE FROM BOARD
 - CLEAN & INSPECT AS PER S-676.



NOTES

QTY./UNIT	TTR-10	AX-436
SCALE	MODEL USED ON	ASSY. NO.
DO NOT SCALE	CODE A	

THE CONTENTS OF THIS DRAWING ARE THE EXCLUSIVE PROPERTY OF THE TECHNICAL MATERIEL CORP. ITS UNAUTHORIZED USE OR REPRODUCTION IN WHOLE OR IN PART IS STRICTLY FORBIDDEN.

REQ'D.	ITEM	PART NUMBER	DESCRIPTION	SYMBOL
X	11	BS 100	SOLDER, TIN ALLOY	
15"	10	RG-174/U	CABLE, R.F.	
1"	9	MWC22(7)UG	WIRE, INSULATED	BLU
1"	8	U5		GRN
1"	7	U90		WH/BLK
1"	6	U96		WH/BLU
1"	5	U4		YEL
1 1/2"	4	U2		RED
1 1/2"	3	MWC22(7)U0	WIRE, INSULATED	BLK
1	2	JJ-287-20	CONNECTOR, RECEPTACLE	
4	1	TE-164-7	SPACER, RIVET TYPE	

KOHN LIST OF MATERIAL

MATERIAL ~

FINISH ~

THE TECHNICAL MATERIEL CORP.
MAMARONECK, NEW YORK

TITLE
PRINTED CIRCUIT BOARD ASSY
EXTENSION MODULE

DRAWN Ron Kohn	DATE 9-27-63	FINAL APPROVAL BP	DATE
CHECKED H.C.	DATE 10/1/63		
ELECT. DES. Ron Kohn	DATE 10/16/63	A-3152	C
MECH. DES. Ron Kohn	DATE 10/16/63	SHEET 2 of 2	REV. LTR.

UNLESS OTHERWISE SPECIFIED DIMENSIONS ARE IN INCHES AND INCLUDE CHEMICALLY APPLIED OR PLATED FINISHES

DECIMALS: X ± .05, .XX ± .01, .XXX ± .005

FRACTIONS: ± 1/64, ANGLES: ± 0° 30'

TOLERANCES

A-3152 C