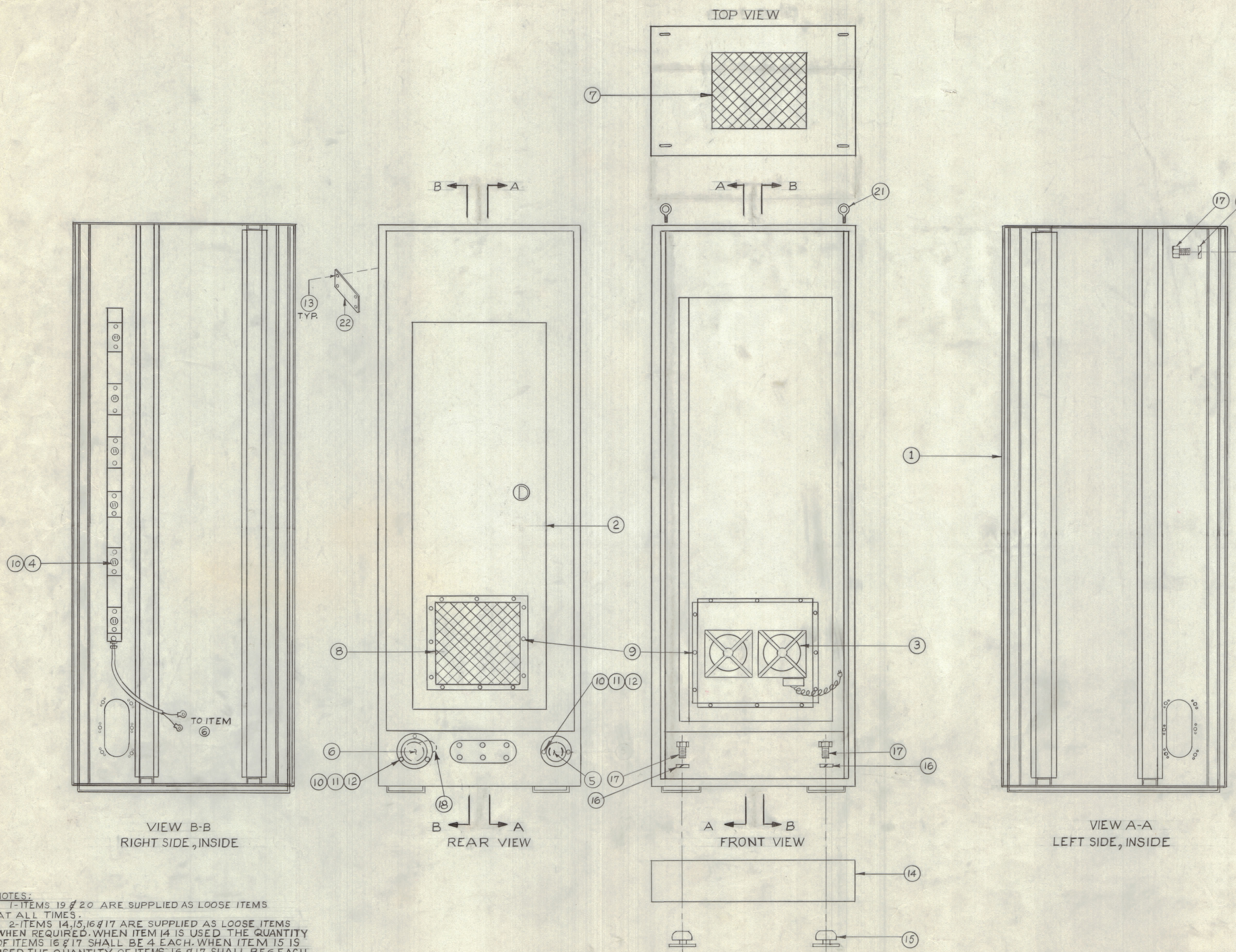


		REVISIONS					
#	SYM	DESCRIPTION	DATE	E.M.N. NO.	DRAFT	CHKD	APPD
X		EXPERIMENTAL RELEASE	4-10-64	X		A.M.	(Signature)
O		ORIGINAL RELEASE FOR PRODUCTION	5/25/64	O		A.M.	
AZ	A	ITEM 1 WAS LD 633/MS2712	11.15.64	12937		(Signature)	(Signature)



NOTES:
 1- ITEMS 19 & 20 ARE SUPPLIED AS LOOSE ITEMS AT ALL TIMES.
 2- ITEMS 14, 15, 16 & 17 ARE SUPPLIED AS LOOSE ITEMS WHEN REQUIRED. WHEN ITEM 14 IS USED THE QUANTITY OF ITEMS 16 & 17 SHALL BE 4 EACH. WHEN ITEM 15 IS USED THE QUANTITY OF ITEMS 16 & 17 SHALL BE 6 EACH.

QTY	ITEM	PART NUMBER	DESCRIPTION	SYMBOL
1	22	NP103-42	PLATE, IDENTIFICATION, COMM.	
4	21	SC142C	BOLT, EYE	
1	20	PL134NG	CONNECTOR, PLUG, FEMALE, AC	
1	19	PL100	CONNECTOR, PLUG, FEMALE, AC	
1	18	CA409-77-8.00	LEAD, ELECTRICAL	W603
X	17	SCHH3716SN16	BOLT, MACHINE	
X	16	LWS37MRN	WASHER, LOCK, SPLIT	
6	15	SH104-4T6	MOUNT, RESILIENT	
1	14	MS1901	BASE, ELEC. EQUIPMENT RACK	
4	13	SFB0256SN3	SCREW, TAPPING, THREAD CUTTING	
5	12	NTH0632BN8	NUT, PLAIN, HEX	
5	11	LWE06MRN	WASHER, LOCK, EXTERNAL	
9	10	SCBP0632BN6	SCREW, MACHINE	
12	9	SCBP0832BN6	SCREW, MACHINE	
1	8	AD103-9	FILTER, AIR CONDITIONING	MP602
1	7	AD103-5	FILTER, AIR CONDITIONING	MP601
1	6	PL133NG	CONNECTOR, RECEPTACLE, MALE, AC	J602
1	5	JJ100	CONNECTOR, RECEPTACLE, MALE, AC	J601
1	4	AX229	AC POWER STRIP	
1	3	A2079-6	FAN ASSEMBLY	
1	2	MS2516	DOOR, REAR	
1	1	MS2712	CABINET, ELECTRICAL EQUIPMENT	

1		RAK 16A	
QTY./UNIT	MODEL USED ON	ASSY. NO.	
SCALE	CODE		
#	A		

UNLESS OTHERWISE SPECIFIED DIMENSIONS ARE IN INCHES AND INCLUDE CHEMICALLY APPLIED OR PLATED FINISHES			
DRAWN	DATE	FINAL APPROVAL	DATE
A. MARINO	4-10-64	(Signature)	
CHECKED	DATE		
(Signature)	4-22-64		
ELECT. DES.	DATE		
(Signature)	5-25-64		
MECH. DES.	DATE		
(Signature)	6-24-64		

THE CONTENTS OF THIS DRAWING ARE THE EXCLUSIVE PROPERTY OF THE TECHNICAL MATERIEL CORP. ITS UNAUTHORIZED USE OR REPRODUCTION IN WHOLE OR IN PART IS STRICTLY FORBIDDEN.

DECIMALS: .1 ± .05, .01 ± .005, .005 ± .005
 FRACTIONS: ± 1/64, ANGLES: ± 0° 30'

A 3146 A