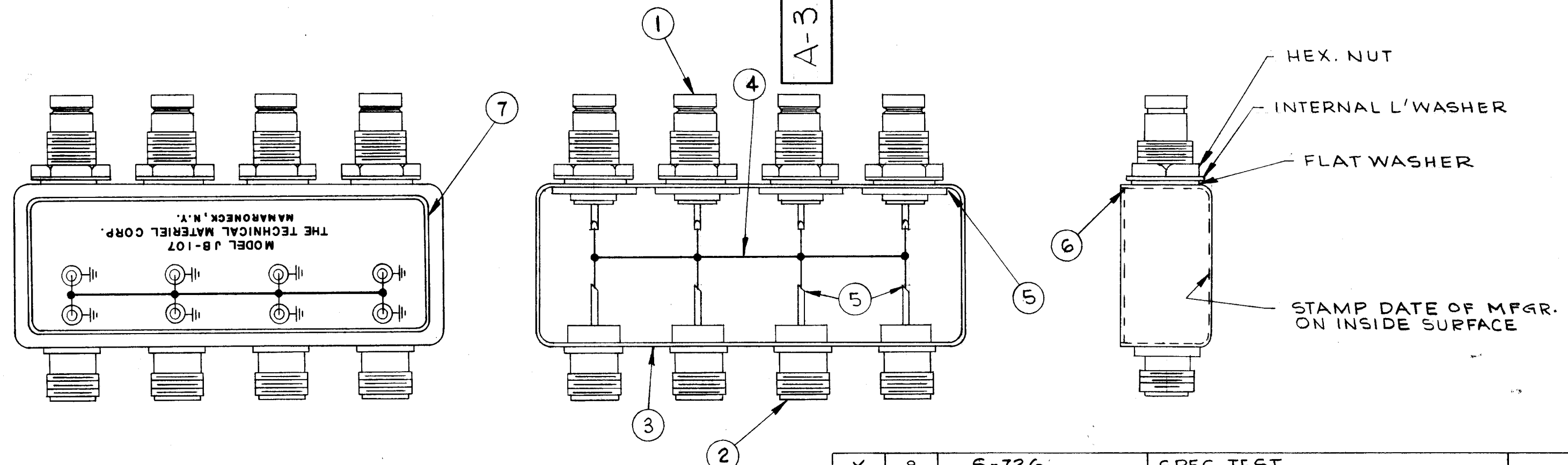


A-3145

REVISIONS

SYM	DESCRIPTION	DATE	E.M.N. NO.	DRAFT	CHKD	APP
A	ITEMS (1) WAS JJ-254 (2) WAS JJ-266	5-6-63	8950	CE	YH	YH



**SPECIFICATIONS**

1. INDUCTION HEATING EQUIPMENT SET AT:  
     AMPERES -  
     SECONDS -
2. USE ITEM (5) FOR MOUNTING ITEM (1) AND (7).
3. USE ITEM (6) FOR SEALING CASE AND COVER ITEM (2).
4. ASSEMBLE AND SOLDER ITEM (4).
5. FINISH AS FOLLOWS:  
     S-114 - ZINC CHROMATE PRIMER  
     S-115 - TMC SMOOTH GRAY ENAMEL  
     (DO NOT PAINT CONNECTOR BODIES)
6. AFFIX ITEM (2) TO SIDE AS SHOWN.
7. \*DENOTES SOLDER ALL AROUND.

REQ'D.	ITEM	PART NUMBER	DESCRIPTION	SYMBOL
X	8	S-726	SPEC, TEST	
I	7	NP-544-1	SCHEMATIC, DIAGRAM (FOIL CAL)	
X	6	BS-106-2	SOLDER SOFT 360°	
X	5	BS-106-4	SOLDER, SOFT 450°	
X	4	WL-100-5	WIRE, BUSS-BAR #18	
I	3	BX-206	CASE & COVER	
4	2	JJ-254	CONNECTOR, RECEPTACLE (N)	
4	1	JJ-267	CONNECTOR, RECEPTACLE (QDM)	

A. MARTINENGO		LIST OF MATERIAL	
MATERIAL SEE NOTES		THE TECHNICAL MATERIEL CORP. MAMARONECK, NEW YORK	
FINISH SEE NOTE 5		TITLE JB-107, ASSEMBLY	
UNLESS OTHERWISE SPECIFIED DIMENSIONS ARE IN INCHES AND INCLUDE CHEMICALLY APPLIED OR PLATED FINISHES		DRAWN <i>DM</i> DATE 4/19/63 CHECKED <i>JW</i> DATE 4/22/63 ELECT. DES. DATE MECH. DES. <i>ALM</i> DATE 4/18/63	FINAL APPROVAL <i>BP</i> DATE A-3145 SHEET REV. LTR. A

JB-107		ASS'Y. NO.
Q'TY./UNIT	MODEL USED ON	
SCALE	CODE	
THE CONTENTS OF THIS DRAWING ARE THE EXCLUSIVE PROPERTY OF THE TECHNICAL MATERIEL CORP. ITS UNAUTHORIZED USE OR REPRODUCTION IN WHOLE OR IN PART IS STRICTLY FORBIDDEN.		

NOTES