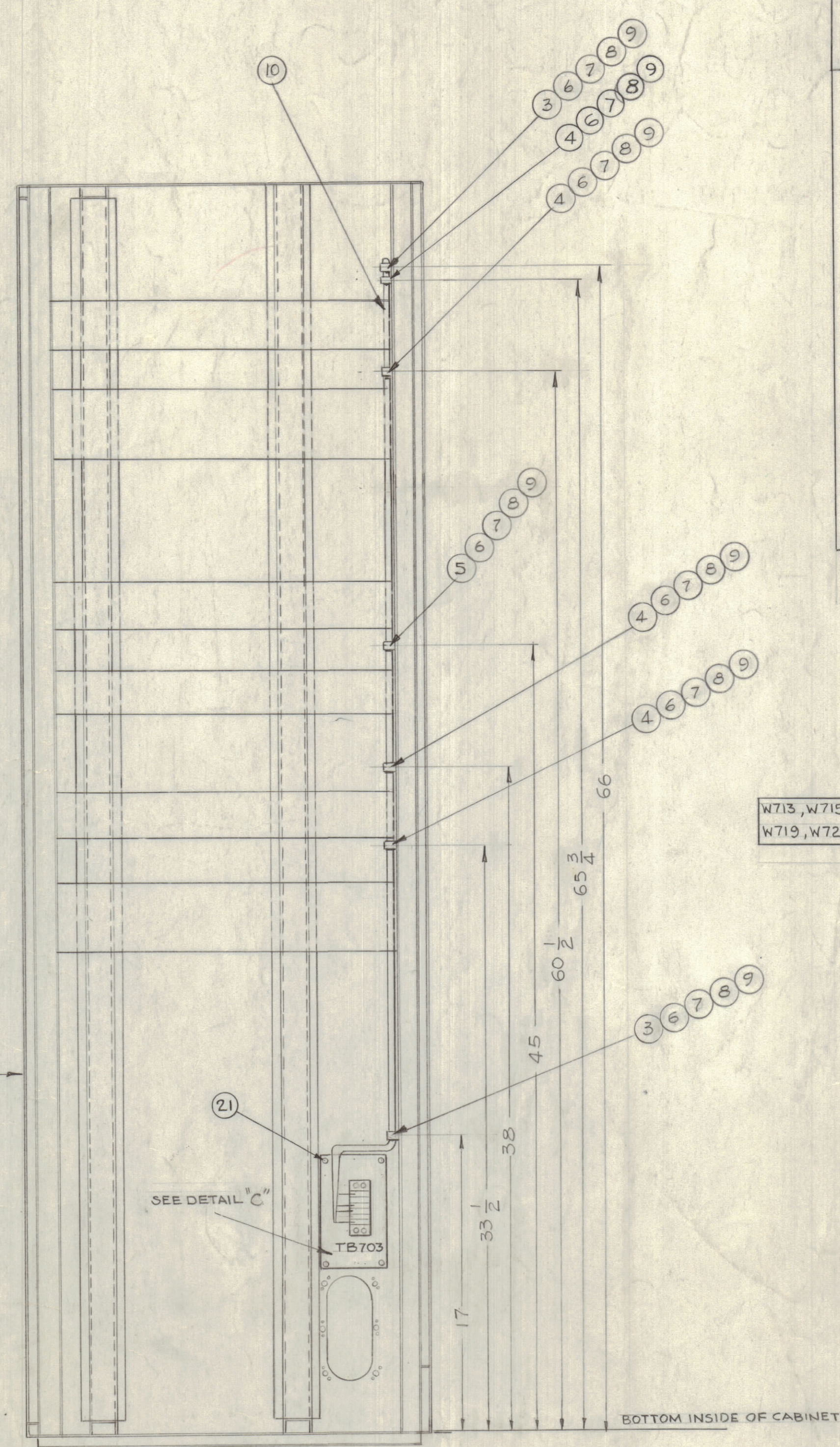
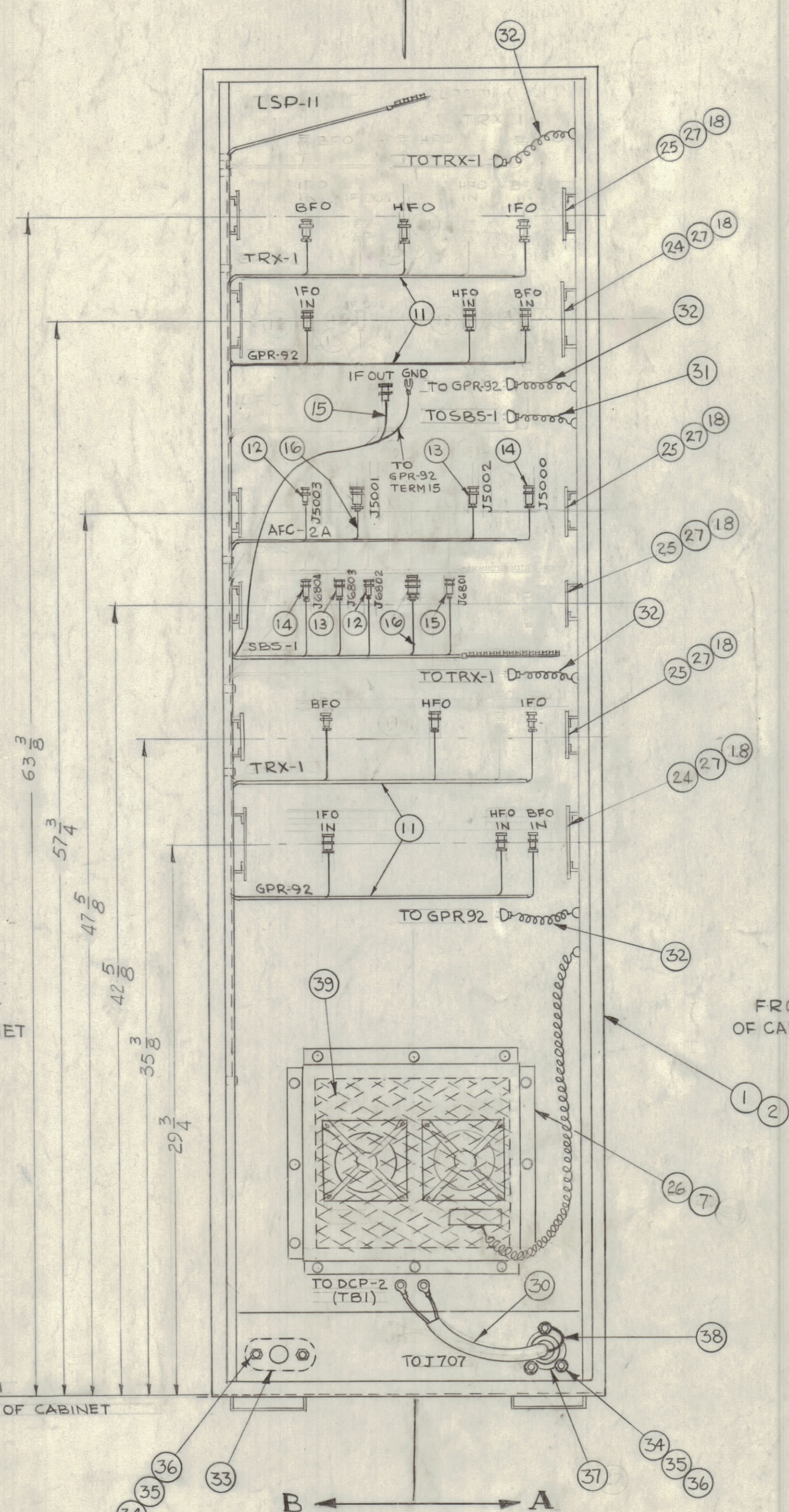
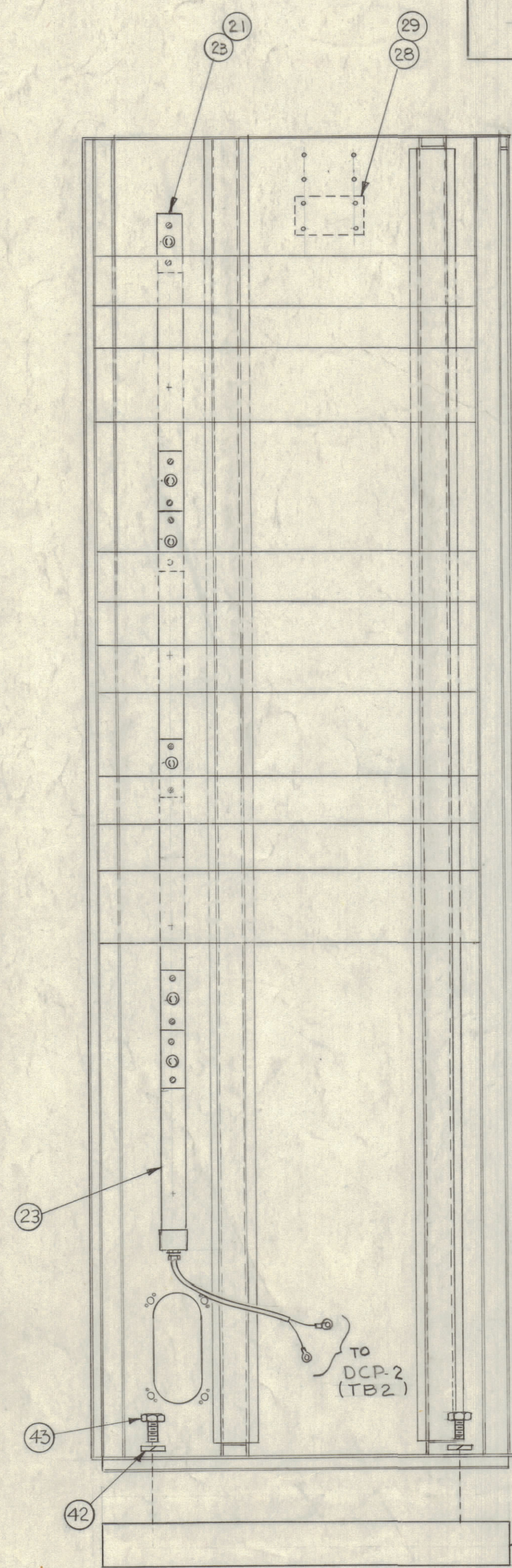
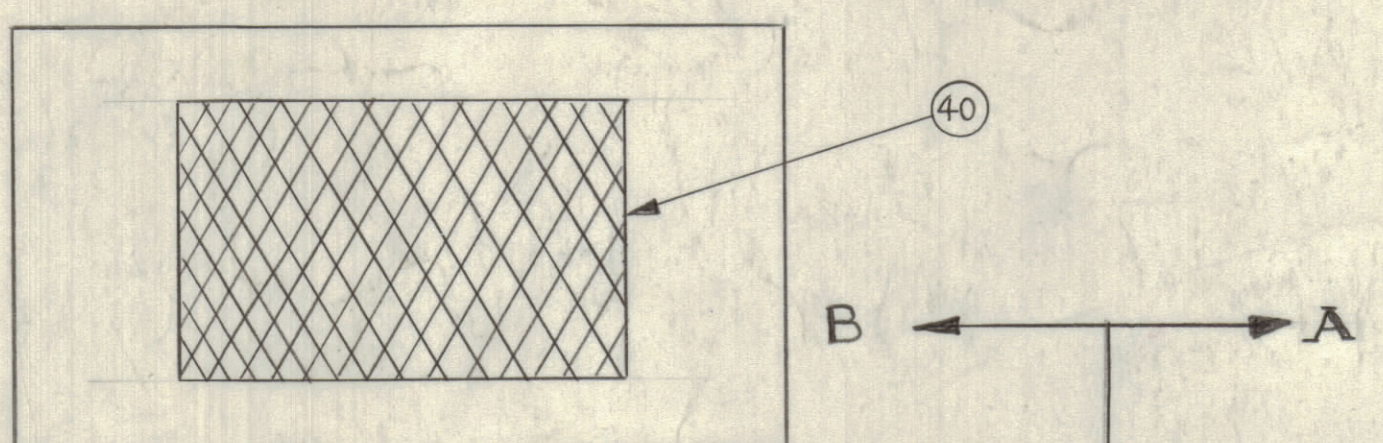
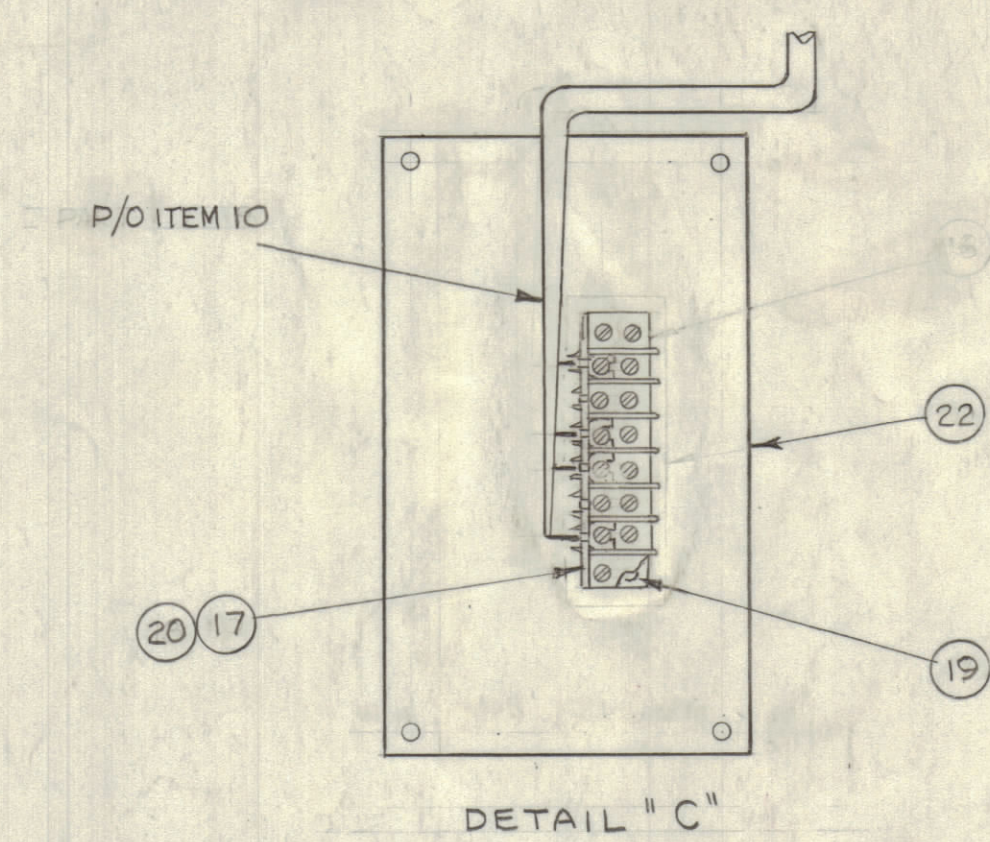


TOP VIEW



REVISIONS						
ZONE	SYM	DESCRIPTION	DATE	E.M.N. NO.	DRAFT	CHKD
A1D1	A	DWG NUMBER WAS A-3137 IT IS WAS FROZEN	4-26-63	5707	EC	
C1D2	B	ITEMS (6) WAS CANCELLED, (2) WAS SCHWABER, ADDED ITEMS (2) (2) (2) (2) (2) (2)	4-29-63	5773	EC	
	C	IN BUILD-UP DESCRIPTIONS UPDATED	5-21-63	5845	EC	
	D	IT. 30 THRU 43 ADDED, QTY OF IT. 12, 13, 14 & 16 WAS 2. ADD. SYM. TO IT. 10 THRU 16, IT. 2 & 6 WAS A2079, TOP VIEW ADDED.	5-5-64	11366	WJB	
C10	E	ITEM 23 CALLOUT ADDED TO PICTORIAL	6-25-64	11649	A.M.	



REQ'D.	ITEM	PART NUMBER	DESCRIPTION	SYMBOL
4	43	SCH3716SN16	BOLT, MASHINE	
4	42	LWS37MRN	WASHER, LOCK, SPLIT	
1	41	MS1901	BASE, EL EQ RAK	
1	40	AD103-5	FILTER, AIR COND.	MP701
1	39	AD103-9	FILTER, AIR COND.	MP702
1	38	CA409-77-8.00	LEAD, ELECTRICAL	W708
1	37	PL133NG	CONNECTOR, RECEPTACLE, MALE	J707
5	36	LWE06MRN	WASHER, LOCK, EXTERNAL	
5	35	NTH0632BN8	NUT, PLAIN, HEX	
5	34	SCBP0632BN8	SCREW, MACHINE	
1	33	MS2999	COVER, ACCESS	
4	32	CA555-3	CABLE ASSY, POWER	
1	31	CA555-1	CABLE ASSY, POWER	W707
1	30	CA588-1	CABLE ASSY, POWER	W703
4	29	SFB0256SN3	SCREW, TAPPING, TREAD CUTTING	
1	28	NP-103-42	PLATE, IDENTIFICATION	
88	27	SCHH1032SN8	SCREW, MACHINE	
1	26	A-2079-7	BLOWER, ASSY.	
4	25	TK-108-18	TRACK & SLIDE SET	
2	24	TK-107-18	TRACK & SLIDE SET	
1	23	AX-416	AC. POWER STRIP	
1	22	LD-1195/PX-705	TERMINAL STRIP MTG. BLOCK	
8	21	SCBP0632BN6	SCREW, MACHINE	
4	20	SCBP0440BN8	SCREW, MACHINE	
2	19	MS-154-1	PLATE, STRADDLE	
88	18	LWE10MRN	WASHER, LOCK, EXTERNAL	
1	17	TM-102-6	TERM. BD, BARRIER TYPE	
1	16	CA-661-2	CABLE ASSY, RF	W709
1	15	CA-480-6-115	CABLE ASSY, RF	W716
1	14	-3-103	CABLE ASSY, RF	W714
1	13	-3-103	CABLE ASSY, RF	W712
1	12	CA-480-3-97	CABLE ASSY, RF	W710
2	11	CA-748	CABLE, ASSY. INTERCONNECT	W706 W711
1	10	CA-747	WIRING HARNESS, BRANCHED	W705
7	9	FW08HBN	WASHER, FLAT	
7	8	LWE08MRN	WASHER, LOCK, EXTERNAL	
19	7	SCBP0832BN8	SCREW, MACHINE	
7	6	NTH0832BN10	NUT, HEX.	
1	5	CU-102-6	CLAMP, LOOP, 7/16 ID.	
4	4	CU-102-4	CLAMP, LOOP, 5/16 ID.	
2	3	CU-102-2	CLAMP, LOOP, 3/16 ID.	
1	2	MS-2513	DOOR, REAR	
1	1	MS-3119	CAB. MODIFICATION	

STRUMER		LIST OF MATERIAL	
MATERIAL	FINISH	TITLE	DATE
		THE TECHNICAL MATERIEL CORP. MAMARONECK, NEW YORK	
		FINAL ASSY RAK-30A	
SCALE	1/16" = 1"	DRAWN	DATE
		G.O.L.	3-7-63
		CHECKED	DATE
		WJB	3-15-63
		MECH. DES.	DATE
		WJB	3-18-63
			DATE
			3-16-63

VIEW B-B
(LEFT SIDE AS SEEN FROM INSIDE)
PROCEDURE
1. ASSEMBLE MAIN CABLE (ITEM 10)
TO INTERIOR OF RACK (ITEM 1) AS SHOWN.
2. ASSEMBLE TRACK & SLIDES
(ITEMS 24 & 25)

NOTES

QTY./UNIT	MODEL USED ON	ASSY. NO.
3/16 = 1	DDR-7A	

DECIMALS	TOLERANCES	FRACTIONS	ANGLES
X ± .08		± 1/64	± 0° 30'
XX ± .01			
XXX ± .005			