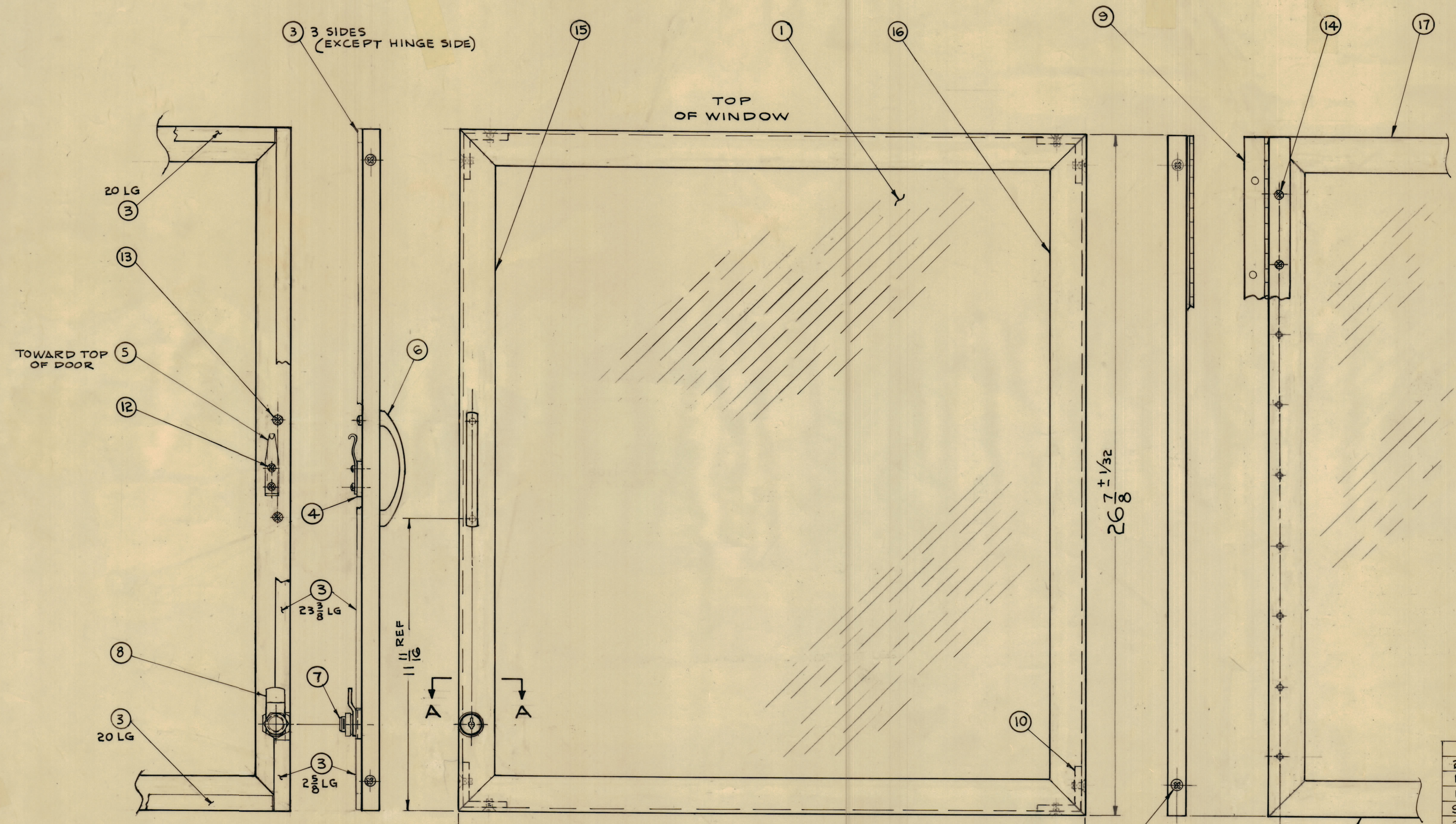


ZONE		SYM		DESCRIPTION	DATE	EM.N. NO.	DRAFT	CHKD.	APPD.
B6, C2	A	DIM 21 11/32 ± 1/32 WAS 21 7/32; ITEM (15) WAS PM 830		11-14-64	11674				
B3	B	TT.3 REQ WAS 66.00		10.5.64	12500				



TOWARD TOP OF DOOR

TOP OF WINDOW

MUST BE CONTINUOUS

SECTION A-A

- NOTES:
1. ASS'Y MUST BE FLAT AND SQUARE WITHIN 1/32".
 2. 4 MITERED CORNERS MUST BE TIGHT FIT (NO GAPS)

REQ'D.	ITEM	PART NUMBER	DESCRIPTION	SYMBOL
2	17	PM-829	FRAME, WINDOW, TOP & BOT	
1	16	PM-828	FRAME, WINDOW, HINGE SIDE	
1	15	PM-830-1	FRAME, WINDOW, HANDLE SIDE	
9	14	SCBP0632BN4	SCREW, MACH, #6-32 x 1/4 LG	
2	13	SCBP0832BN12	SCREW, MACH, #8-32 x 3/4 LG	
2	12	SCBP0632BN6	SCREW, MACH, #6-32 x 3/8 LG	
8	11	SCFP1032SNG	SCREW, MACH, BH #10-32 x 3/8 LG	
4	10	PM-826	BRACE, ANGLE, CORNER	
1	9	HI-114	HINGE, WINDOW	
1	8	PM-824	CAM, LOCK,	
1	7	LK-103	LOCK, DISC TUMBLER,	
1	6	HA-120	HANDLE,	
1	5	LK-101-2	STRIKE	
1	4	PM-827	SPACER, BAR	
1	3	TA-111-2-4-66.00-A	TAPE, URETHANE	
1	2	RY-151-89.00	CHANNEL "U" RUBBER	
1	1	GS-100	GLASS, SAFETY PLATE	

MATERIAL		LIST OF MATERIAL	
MATERIAL		THE TECHNICAL MATERIEL CORP. MAMARONECK, NEW YORK	
FINISH		TITLE WINDOW & FRAME ASS'Y	
SCALE NO SCALE		UNLESS OTHERWISE SPECIFIED DIMENSIONS ARE IN INCHES AND INCLUDE CHEMICALLY APPLIED OR PLATED FINISHES	DRAWN <i>JAB</i> DATE 10/5/62
THE CONTENTS OF THIS DRAWING ARE THE EXCLUSIVE PROPERTY OF THE TECHNICAL MATERIEL CORP. ITS UNAUTHORIZED USE OR REPRODUCTION IN WHOLE OR IN PART IS STRICTLY FORBIDDEN.		DECIMALS X ± .05 XX ± .01 XXX ± .005	FINAL APPROVAL <i>BP</i> DATE 10/5/62
		TOLERANCES ± 1/64 ANGLES ± 0° 30'	MECH. DES. <i>J.A.K.</i> DATE 1-3-63
			REV. LTR. A-3126 B

NOTES

A-3126 B