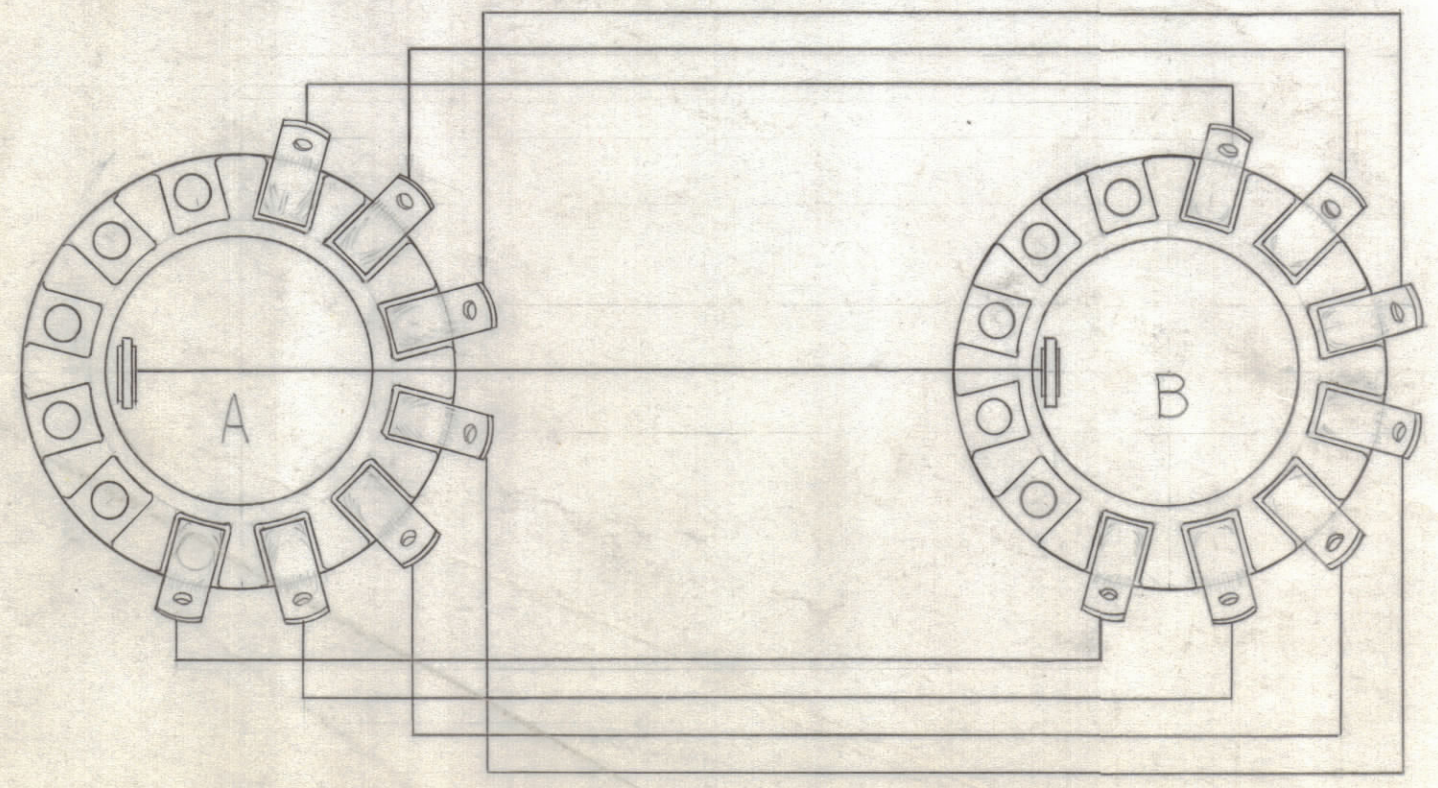
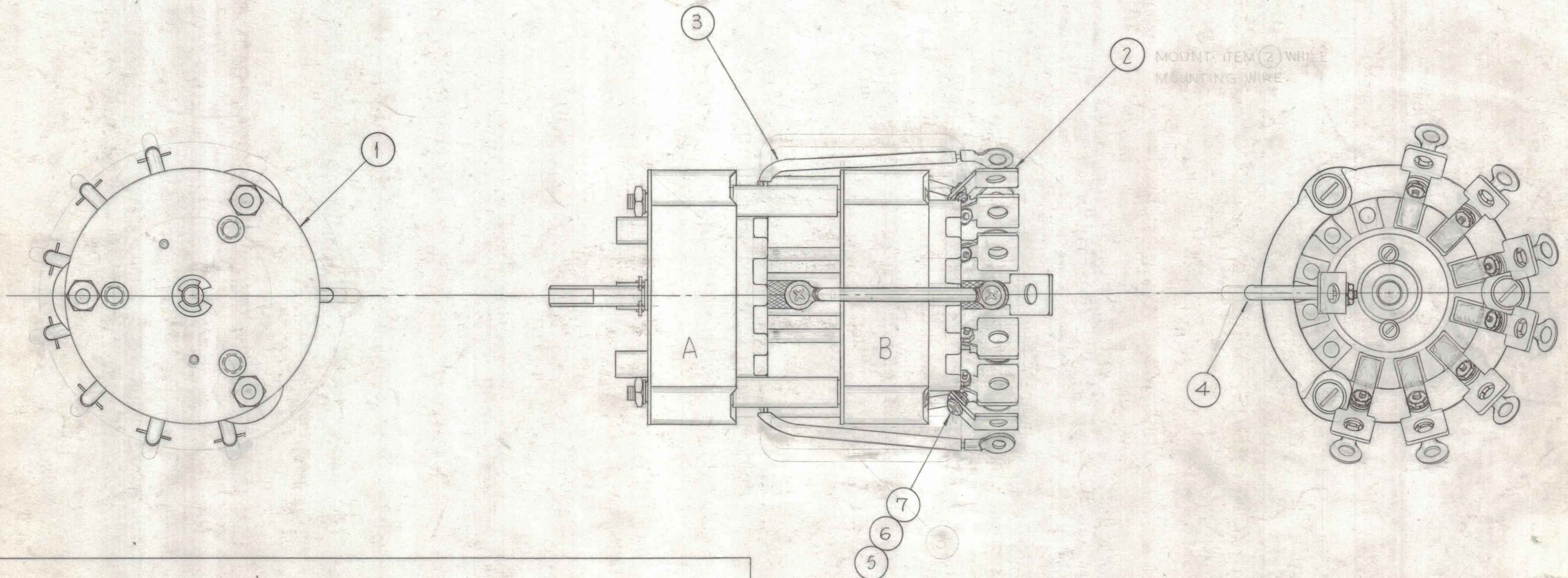


REVISIONS						
ZONE	SYM	DESCRIPTION	DATE	E.M.N. NO.	DRAFT	CHKD APPD
X	1	ITEMS 6,6,7 ADDED & WIRES ADDED TO CA-412				
O		ORIGINAL RELEASE FOR PRODUCTION	5/28/64	O	A.M.	



WIRING DIAGRAM

REQ'D.	ITEM	PART NUMBER	DESCRIPTION	SYMBOL
X	8	BS-100	SOLDER, SOFT	
9	7	SCBP0832BN4	SCREW, MACHINE	
9	6	NTH0832BN8	NUT, HEXAGON	
9	5	LWS08MRN	LOCKWASHER, SPRING TYPE	
1	4	CA-412-48-4.00	CABLE ASS'Y JUMPER	
7	3	CA-412-47-3.00	CABLE ASS'Y JUMPER	
8	2	MS-3071	BRACKET, TERMINAL MTG.	
1	1	SW-267-7-T2	SWITCH, ROTARY SWITCH	

F. BUDETTI		LIST OF MATERIAL	
MATERIAL		THE TECHNICAL MATERIEL CORP. MAMARONECK, NEW YORK	
FINISH		TITLE SWITCH ASS'Y FILAMENT	
UNLESS OTHERWISE SPECIFIED DIMENSIONS ARE IN INCHES AND INCLUDE CHEMICALLY APPLIED OR PLATED FINISHES		DRAWN <i>Gianfilippo</i> DATE 10-26-62 CHECKED <i>aa</i> DATE ELECT. DES. <i>DB</i> DATE MECH. DES. <i>RC</i> DATE	FINAL APPROVAL <i>RC</i> DATE A-3122 SHEET
DECIMALS .X ± .05 .XX ± .01 .XXX ± .005	FRACTIONS ± 1/64 ANGLES ± 0° 30'	TOLERANCES	REV. LTR. <input type="radio"/>

2	GPT-200K	AX-396
QTY./UNIT	MODEL USED ON	ASSY. NO.
SCALE <i>#</i>	CODE <i>A</i>	
THE CONTENTS OF THIS DRAWING ARE THE EXCLUSIVE PROPERTY OF THE TECHNICAL MATERIEL CORP. ITS UNAUTHORIZED USE OR REPRODUCTION IN WHOLE OR IN PART IS STRICTLY FORBIDDEN.		

A-3122  
O