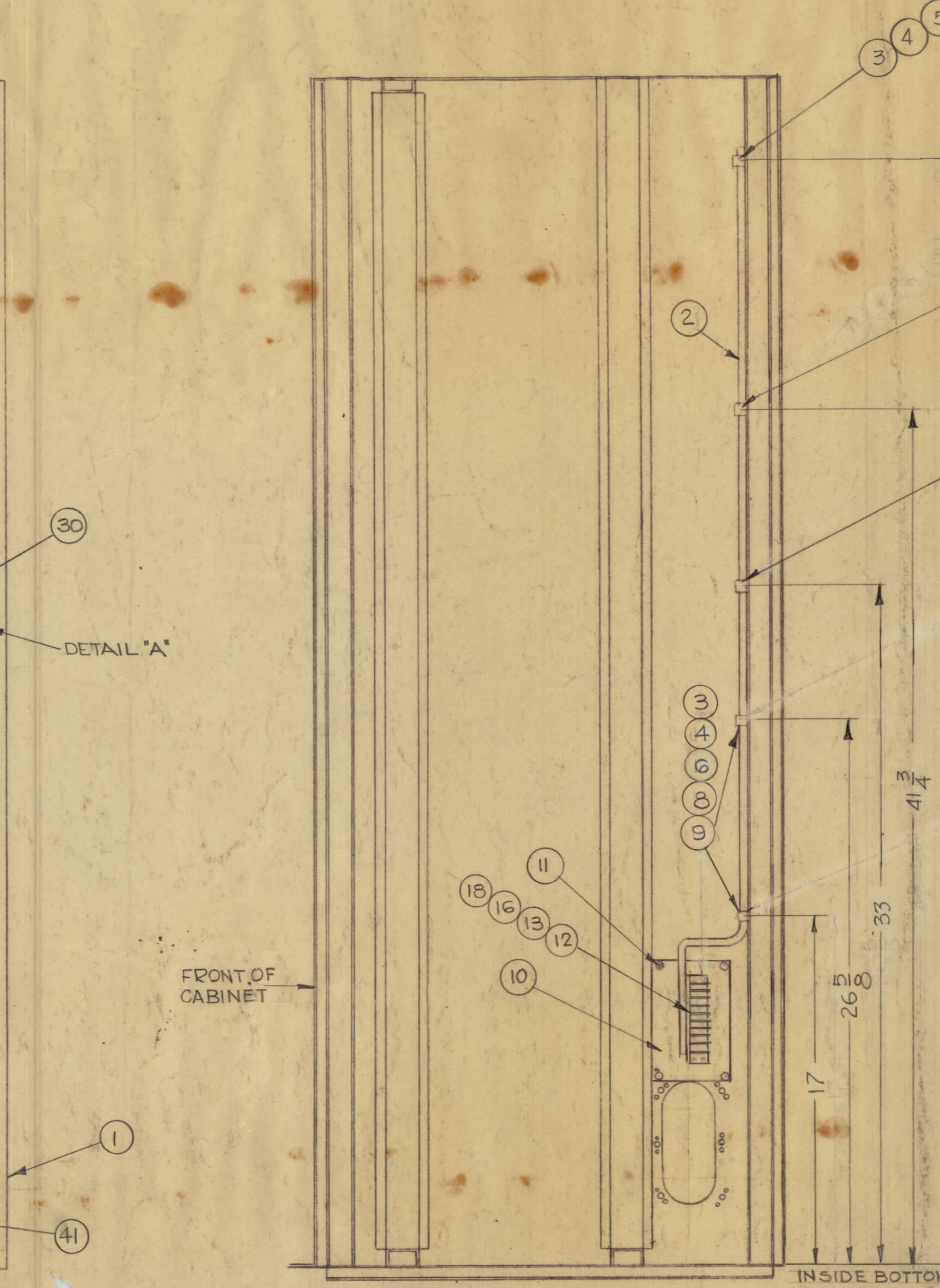
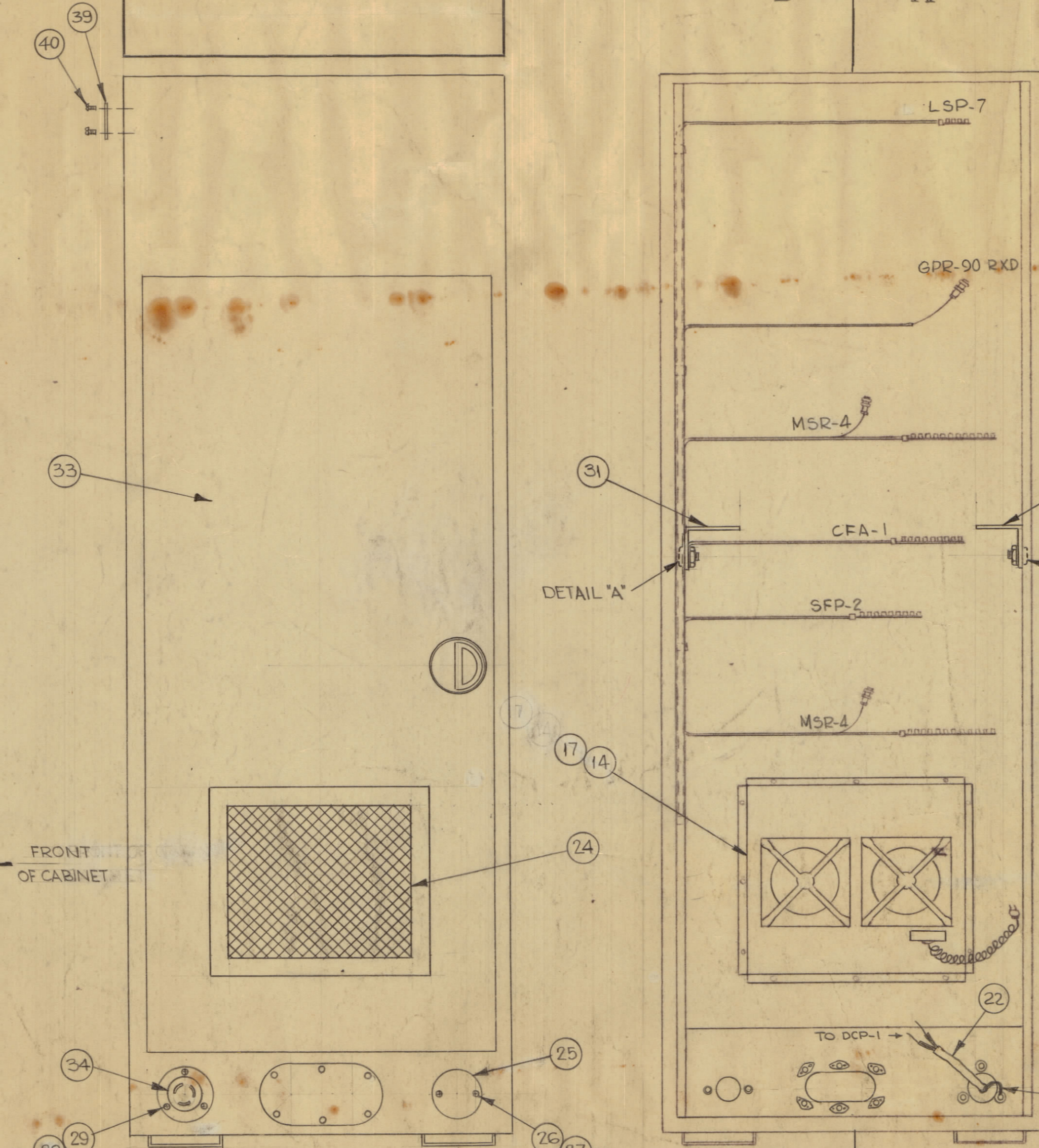
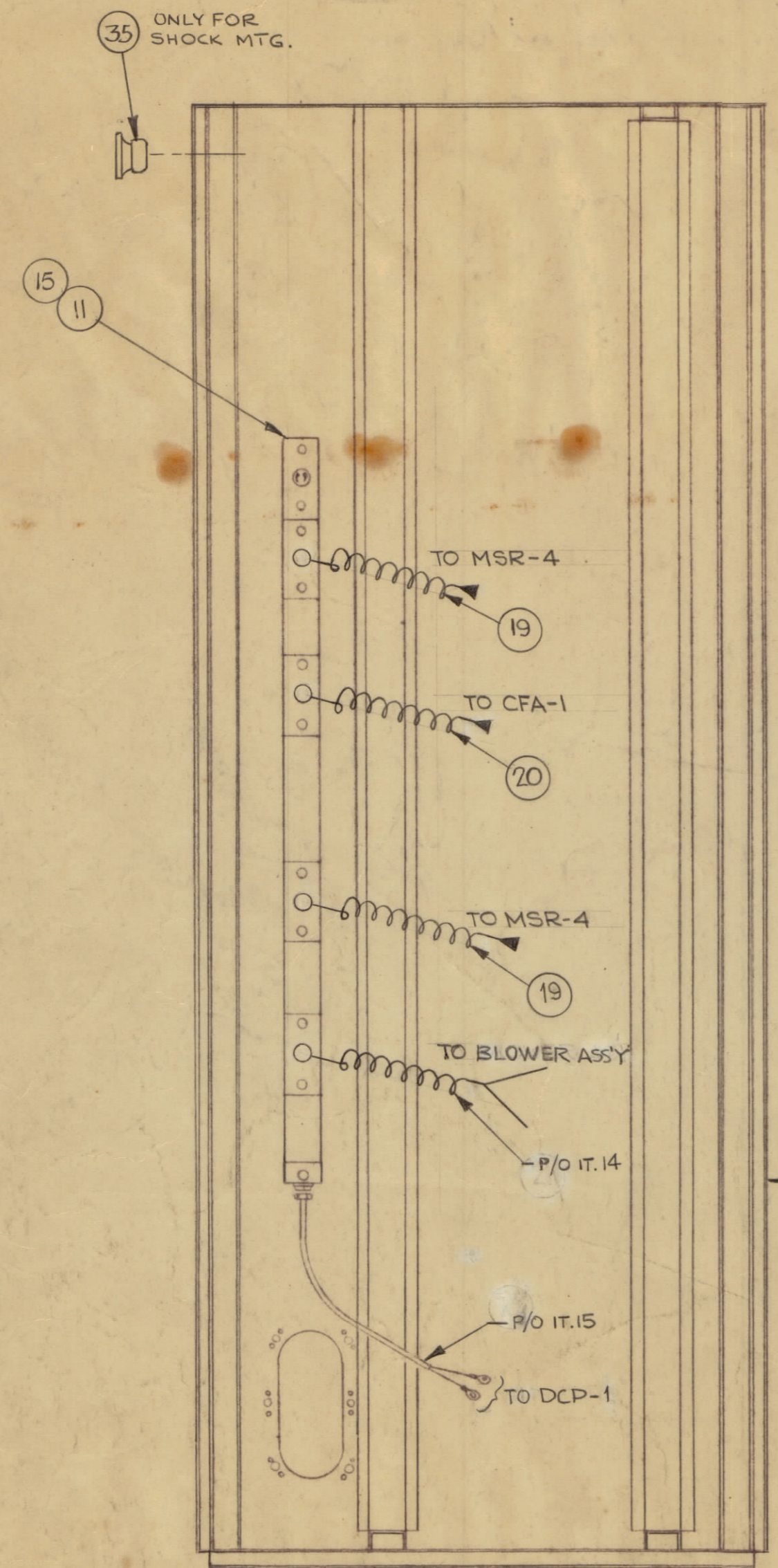
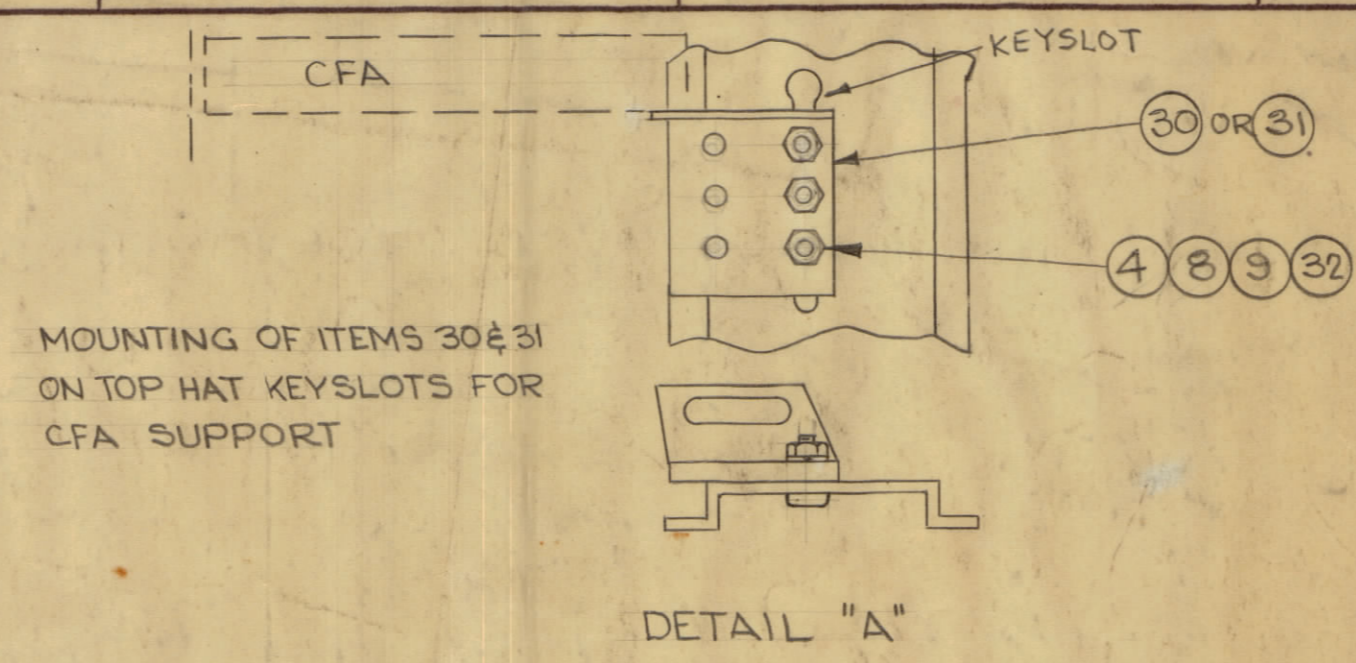
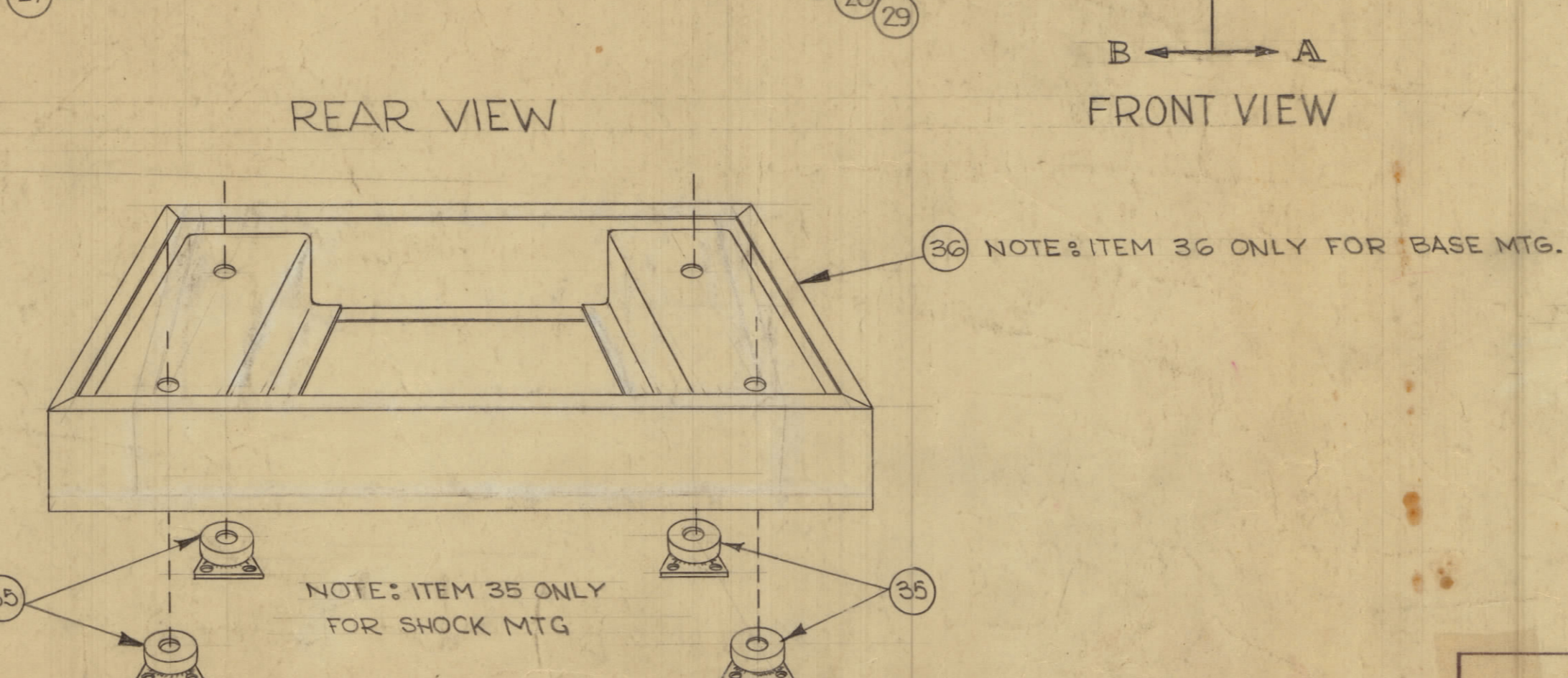


		REVISIONS					
ZONE	SYM	DESCRIPTION	DATE	E.M.N. NO.	DRAFT	CHKD	APPD
A		ADDED ITEMS (30, 31, 32) DETAIL "A" REAR VIEW	5-7-63	9034			
B		ITEMS (30, 31) QTY WAS 3, ADDED. MTR. NO. 11, WAS MS-317 (RACK) IT10 NPS PX-691, 1199 IT35 W. 4 REQ. IT21 CA-515-2 DELE. IT22 WAS CA-588-3, IT37838 WAS 4 REQ. IT39, 40 & 41 ADD. NOTE "SUPPLY 4 EA." ADDED. ON FRONT VIEW IT1, 22, 31 ADD & PICT. UPDATED. SYM. ADD. ON REAR VIEW IT. 39, 40 ADD. ON VIEW A-A IT. 35 ADD.	8-9-64	10714			
A2	C	IT. WAS LD 633/MS 3121	11-17-64	12931			



QTY	ITEM	PART NUMBER	DESCRIPTION	SYMBOL
1	41	CA-409-77-8.00	LEAD, ELEC. GROUND	
4	40	SFBO256SN3	SCREW, TAP, THD CTG.	
1	39	NP-103-42	PLATE, I D.	
SEE NOTE 38	38	SCHH37IGSNIG	BOLT, HEX HEAD	
SEE NOTE 37	37	LWS37MRN	LOCKWASHER, SPLIT	
1	36	MS-1901	BASE, CABINET	
6	35	SH-104-4-TG	SHOCK ISOLATOR	
1	34	PL-133-NG	CONNECTOR, RECEPTACLE, 3 PRONG J 601	
1	33	MS-2516	DOOR, REAR	
6	32	SCBP1032BN9	SCREW, MACHINE	
1	31	MS-1973-2	BRACKET, SUPPORT, LEFT	
1	30	MS-1973-1	BRACKET, SUPPORT, RIGHT	
5	29	SCBP0632BN9	SCREW, MACHINE	
5	28	NTH0632BN8	NUT, HEX	
5	27	LWEOGMRN	LOCKWASHER, EXTERNAL	
2	26	FWOGHBN	WASHER, FLAT	
1	25	MS-2999	PLATE, COVER	
1	24	AD-103-9	FILTER, AIR, REAR	MP602
1	23	AD-103-5	FILTER, AIR, TOP	MP601
1	22	CA-588-1	CABLE ASSY, POWER INPUT	W607
1	21			
1	20	CA-435-3	CABLE ASSY, POWER	W603
2	19	CA-581-1	CABLE ASSY, COILED	W602, 4
4	18	LWEO4MRN	LOCKWASHER, EXTERNAL	
12	17	SCBP0832BN6	SCREW, MACHINE	
2	16	MS-154-1	PLATE, STRADDLE	
1	15	AX-405	AC POWER STRIP	
1	14	A-2079	BLOWER ASSY	
4	13	SCBP0440BN8	SCREW, MACHINE	
1	12	TM-102-9	TERMINAL STRIP	TB602
7	11	SCBP0632BN6	SCREW, MACHINE	
1	10	LD1199 /PX-691	BLOCK, TERM. STRIP MOUNTING	
11	9	NTH1032BN10	NUT, HEX	
11	8	LWEO4MRN	LOCKWASHER, EXTERNAL	
1	7	CU-102-5	CLAMP "G" TYPE	
3	6	CU-102-4	CLAMP "G" TYPE	
1	5	CU-102-3	CLAMP "G" TYPE	
11	4	FWIOHBN	WASHER, FLAT	
5	3	SCHH1032BN8	SCREW, MACHINE, HEX HEAD	
1	2	CA-738	WIRING HARNESS, BRANCHED	W601
1	1	MS3121	CAB., MODIFIED	



NOTE:
ITEMS 37 & 38 FOR MOUNTING EITHER
ITEM 35 OR 36
SUPPLY 4 EA. ITEMS 37 & 38 FOR BASE MTG.
\$ 6 EA. FOR SHOCK MTG.

NOTES

1		RAK-16B	
QTY UNIT	MODEL USED ON	ASSY. NO.	
3/16 = 1			

LIST OF MATERIAL			
MATERIAL	THE TECHNICAL MATERIEL CORP. MAMARONECK, NEW YORK		
FINISH	TITLE		
	FINAL ASSEMBLY RAK-16B		
UNLESS OTHERWISE SPECIFIED DIMENSIONS ARE IN INCHES AND INCLUDE CHEMICALLY APPLIED OR PLATED FINISHES	DRAWN	DATE	FINAL APPROVAL
	G.D.L.	3-15-63	
DECIMALS	CHECKED	DATE	
FRACTIONS	NO	3-16-63	
ANGLES	RECT.	DATE	
TOLERANCES	DATE	3-16-63	A-3107
	MECH. DES.	DATE	C
		3-16-63	