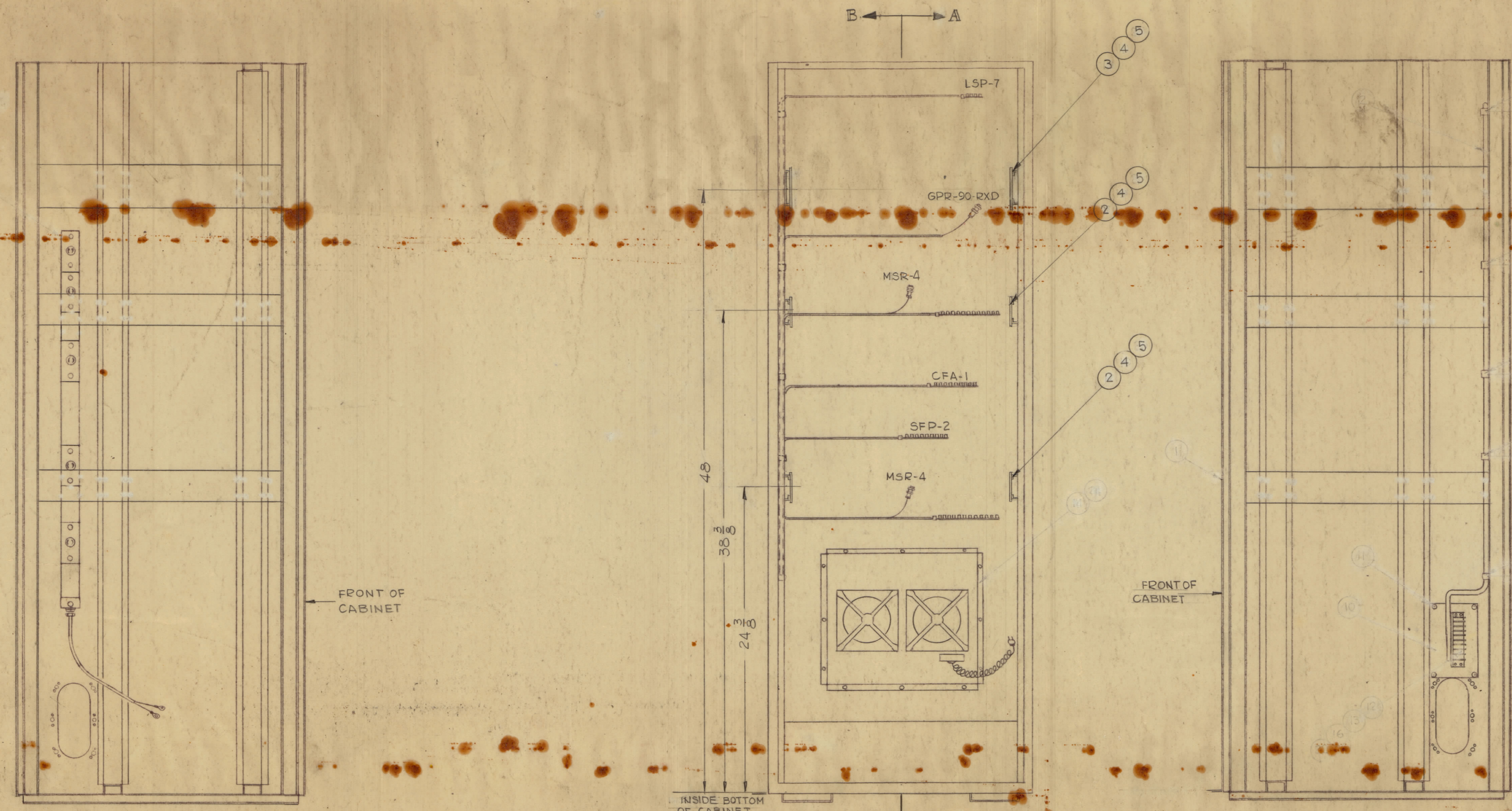


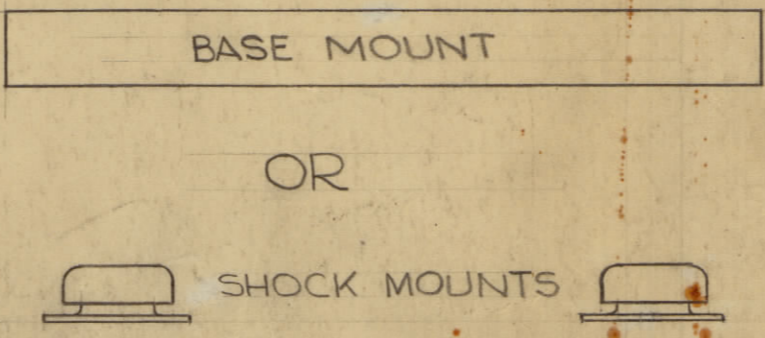
REVISIONS						
ZONE	SYM	DESCRIPTION	DATE	E.M.N. NO.	DRAFT	CHKD
A		PICTORIAL & BUILDUP CLARIFIED	5-23-63	3024		



VIEW-A-A
(RIGHT SIDE AS SEEN FROM INSIDE)

FRONT VIEW

VIEW-B-B
(LEFT SIDE AS SEEN FROM INSIDE)



REQ'D	ITEM	PART NUMBER	DESCRIPTION	SYMBOL
4	22	LWE10MRN	LOCKWASHER, EXTERNAL TOOTH	
12	21	5GBR032BNG	SCREW MACHINE	
52	23	LWE10MRN	LOCKWASHER, EXTERNAL	
12	19	5SH1031SNG	SCREW MACHINE HEX HEAD	
2	13	TK-107-1B	TRACK & SLIDE SET	
2	17	TK-108-1B	TRACK & SLIDE SET	
2	16	MP-154	PLATE, STEADY	
1	15	AX-1	SCREW, SELF DRILLING	
1	4	4-207	SCREW, SELF DRILLING	
4	5	5CBP0418NS	SCREW MACHINE	
1	12	TM-103-2	TERMINAL STRIP	
1	7	5CBP0321SNG	SCREW MACHINE	
1	10	PA-851418NS	SCREW, SELF DRILLING MOUNTING	
3	9	ATH1031RND	WASHER, FLAT	
5	2	LWE10MRN	LOCKWASHER, EXTERNAL TOOTH	
1	8	CHE-1151	CLAMP, WIRE TYPE	
3	5	CH-1031S	CLAMP, WIRE TYPE	

REQ'D	ITEM	PART NUMBER	DESCRIPTION	SYMBOL
52	5	SCHH1032SNG	SCREW, MACHINE	
52	4	LWE10MRN	LOCKWASHER, EXTERNAL TOOTH	
2	3	TK-108-1B	TRACK & SLIDE SET	
1	2	TK-107-1B	TRACK & SLIDE SET	
1	1	RAK-16B	CABINET, ELECTRICAL	

LIST OF MATERIAL			
THE TECHNICAL MATERIEL CORP. MAMARONECK, NEW YORK			
TITLE FINAL ASSEMBLY, RAK-16C			
MATERIAL	FINISH	TITLE	
UNLESS OTHERWISE SPECIFIED DIMENSIONS ARE IN INCHES AND INCLUDE CHEMICALLY APPLIED OR PLATED FINISHES			
DECIMALS	FRACTIONS	ANGLES	
X ± .05	± 1/64	± 0° 30'	
XX ± .01			
XXX ± .005			

1	RAK-16C	ABBY. NO.
QTY/UNIT	MODEL USED ON	
SCALE - 3/16" = 1"	CODE	

NOTES

THE CONTENTS OF THIS DRAWING ARE THE EXCLUSIVE PROPERTY OF THE TECHNICAL MATERIEL CORP. ITS UNAUTHORIZED USE OR REPRODUCTION IN WHOLE OR IN PART IS STRICTLY FORBIDDEN.

DRAWN	DATE	FINAL APPROVAL	DATE
G.D.L.	3-16-63	BP	
CHECKED	DATE		
ELECT	DATE		
MECH DES	DATE		

A-3106
A