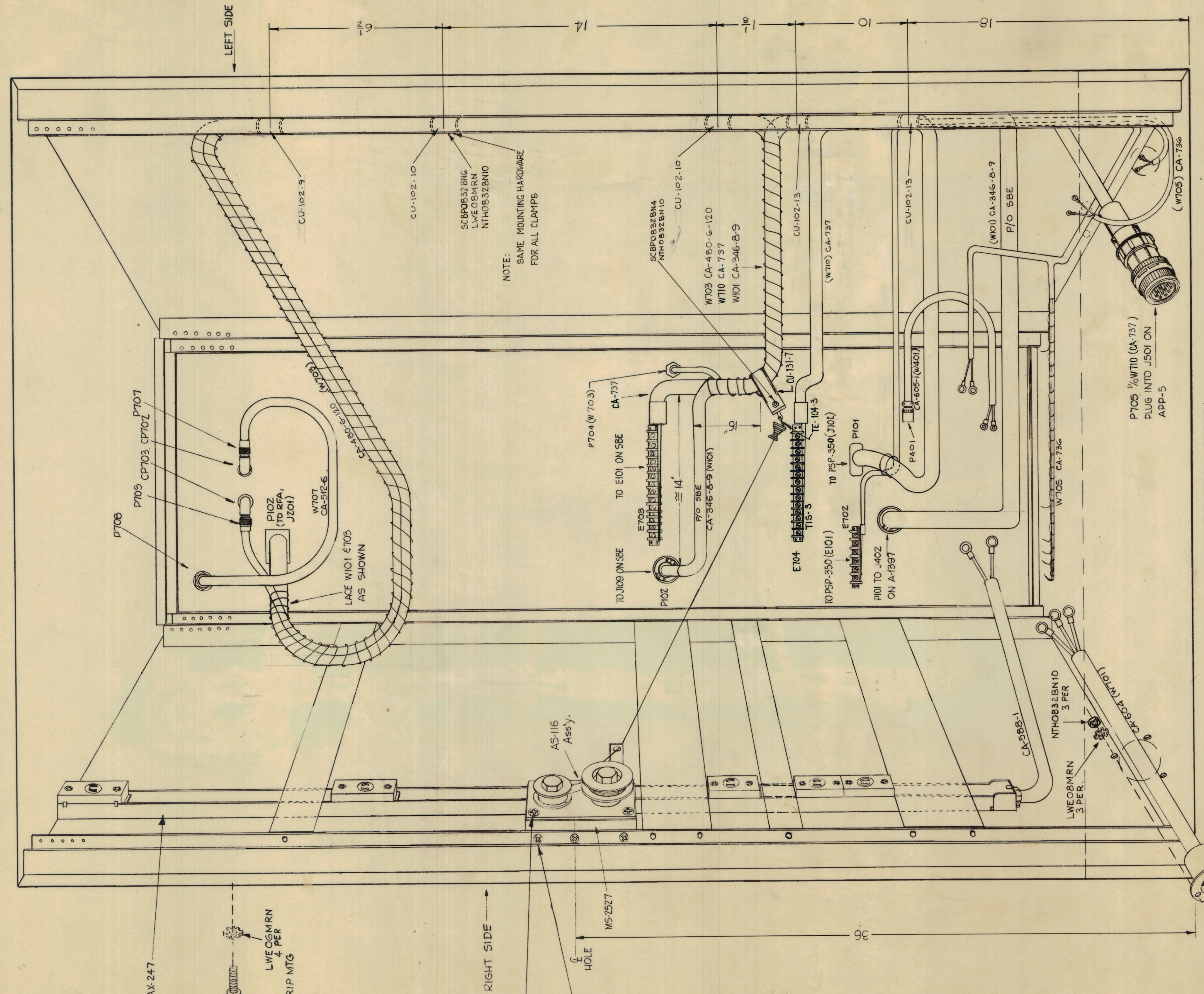


NOTICE TO PERSONS RECEIVING THIS DRAWING

THE TECHNICAL MATERIEL CORPORATION claims proprietary right in the material disclosed herein. This drawing is issued in confidence for engineering information only and may not be reproduced or used to manufacture anything shown hereon without permission from THE TECHNICAL MATERIEL CORPORATION to the user. This drawing is loaned for mutual assistance and is subject to recall at any time.

Property of:
 THE TECHNICAL MATERIEL CORPORATION
 MAMARONECK, NEW YORK

NOTE ~ CABLES SHOULD BE INSTALLED BEFORE SLIDE TRACKS. SLIDES NOT SHOWN ON LEFT SIDE FOR CLARITY.



REAR PICTORIAL SHOWN

A-3089

REG. NO.	ITEM	PART NO.	DESCRIPTION	SYMBOL
A	EG	CA-460-6-120 WAS CA-383-8F, HDWR CLARIFIED	4-8-63 5736	
SYM	ZONE	DESCRIPTION	DATE	CH. NO.
		UNLESS OTHERWISE SPECIFIED:	SCALE	
DIMENSIONS ARE IN INCHES			MAXIMUM ALLOWABLE TOLERANCES HAVE BEEN DETERMINED AND ANY DEVIATIONS WILL BE CAUSE FOR REJECTION. REMOVE ALL BURRS & SHARP EDGES	
TOLERANCES ON				
FRACTIONS ± 1/64			DECIMALS ± .005	
			ANGLES ± 1/2°	

- AX-247
- SCBP0832BNG 4 PER FOR AC STRIP MTS
- LWEO6MRN 4 PER
- AS-116 Assy.
- MS-2527
- HOLE
- SCBP0832BNG LWEO6MRN NTH0832BN10 2 EACH
- SCBP0832BNG LWEO6MRN 3 EACH

REQ. PER UNIT	MODEL	SECTION	ASSY. NO.	DATE
1	RAK-19G			10-30-62
USED ON				

REG. NO.	ITEM	PART NO.	DESCRIPTION	SYMBOL
			STRUMER	
THE TECHNICAL MATERIEL CORP. MAMARONECK, NEW YORK				
INSTALLATION; AC STRIP, CABLING, TRACK				
W.A. FRANCO				
DRAWN	CHECKED	FINAL APPROVAL		
DM	DM	A-3089		
FINISH & SPEC. NO.				
ELEC. DES. APP. MECH. DES. APP. SHEET OF				