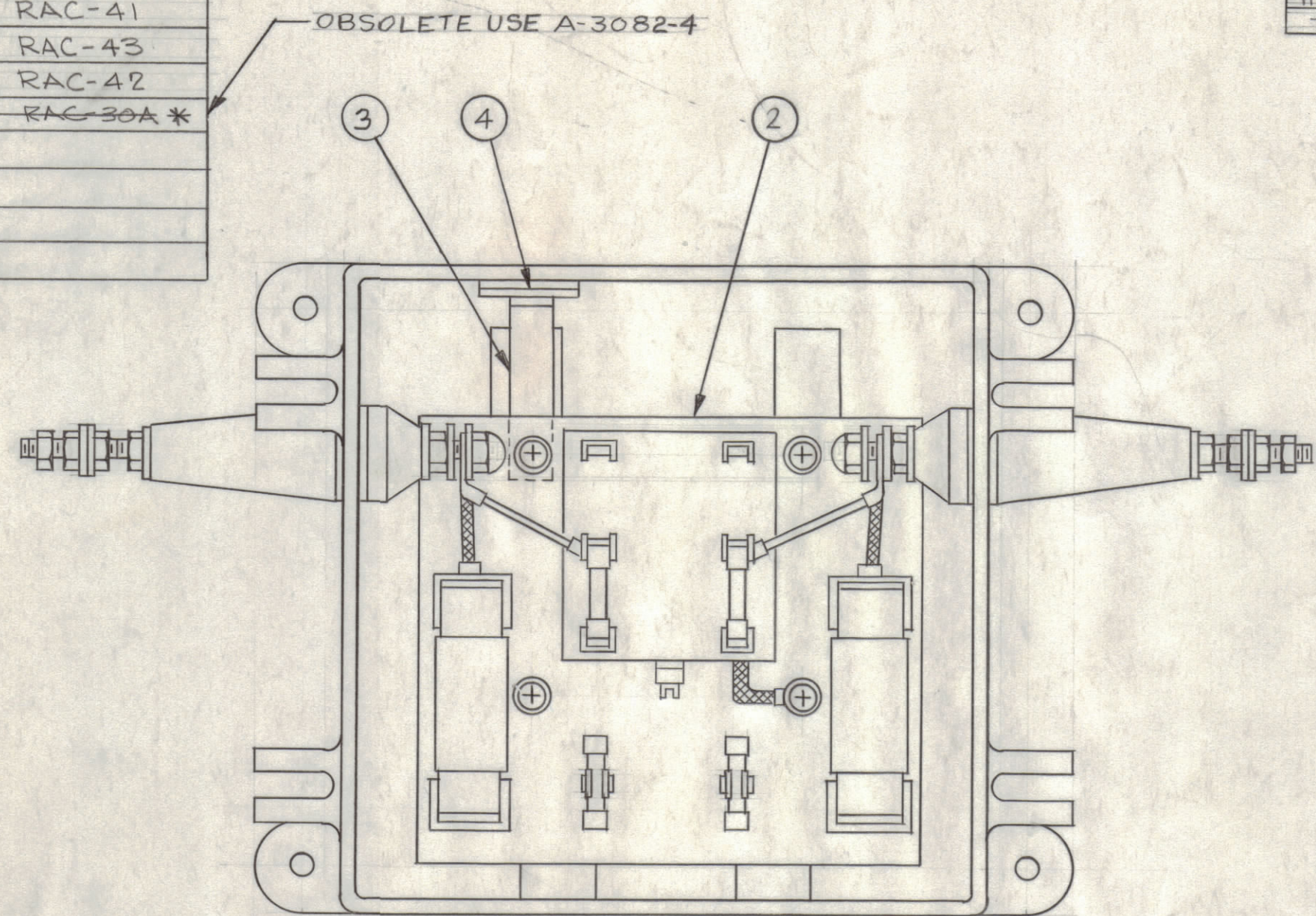


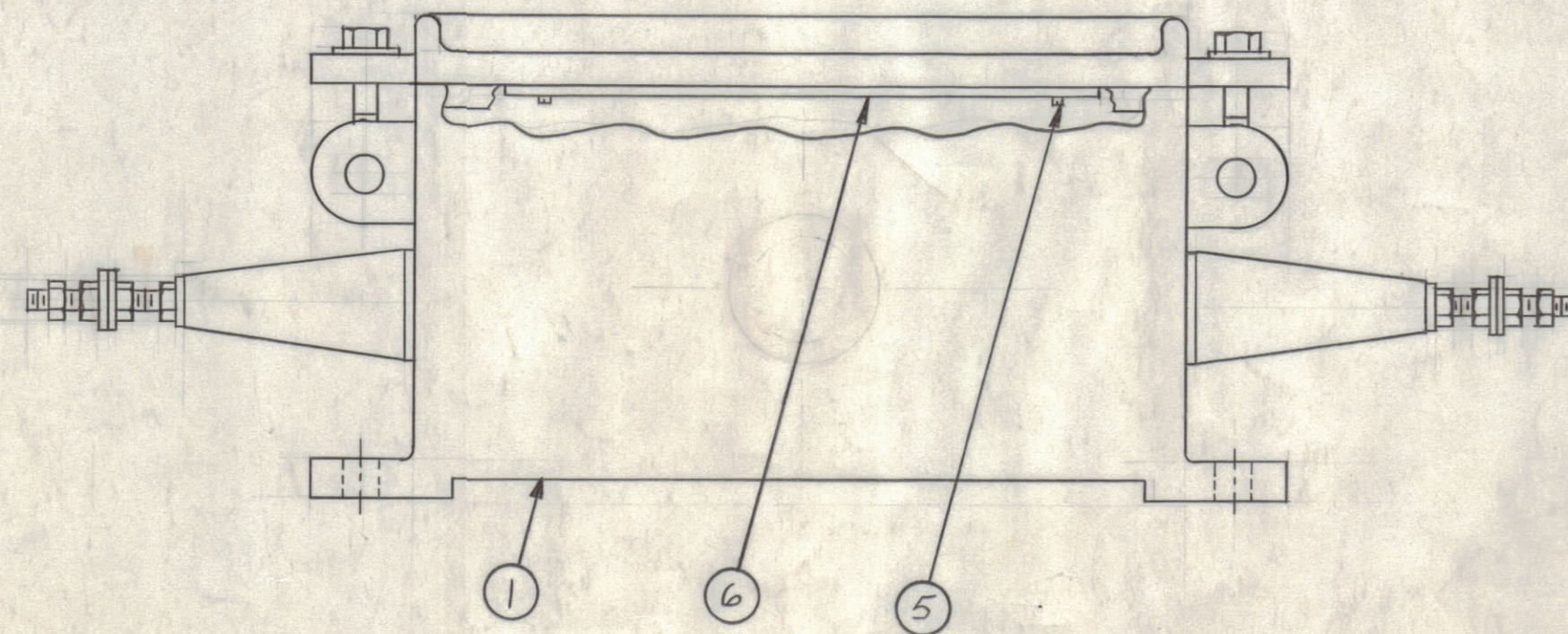
TMC PART NO.	ITEM #2	ITEM #6	USED ON
A-3082-1	AX-381-1	LD-958	RAC-34
A-3082-2	AX-381-2	LD-984	RAC-37
A-3082-3	AX-381-3	LD-244	RAC-30
A-3082-4	AX-381-4	LD-300	RAC-32
A-3082-5	AX-381-5	LD-1181	RAC-41
A-3082-6	AX-381-6	LD-1201	RAC-43
A-3082-7	AX-381-7	LD-1202	RAC-42
A-3082-8	AX-381-8	LD-248	RAC-30A *

* NOTE: IDENTICAL WITH RAC-32 EXCEPT FOR ITEM 6

REVISIONS						
ZONE	SYM	DESCRIPTION	DATE	E.M.N. NO.	DRAFT	CHKD
H7	A	A-3082-5 ADDED TO CHART; RAC-41 ADDED PICTORIAL CLARIFIED	2-2-63	8165	EF	JDe
H6 B2	B	MOVED USED ON COLUMN TO CHART, ITEM (B) WAS SC-102-1 ON CHART, LD 300 WAS LD 248, ADDED A-3082-6	4-11-63	8757	EF	JDe
H7	C	A-3082-7 ADDED TO CHART	5-13-63	9024	EF	JDe
H5	D	A-3082-8 ADDED TO CHART PART NO. CLARIFIED WITH NOTE	7/14/63	10138	EF	JDe
H7	E	ADDED OBSOLETE NOTE TO A-3082-8	6/5/64	11494	A.M.	WHA



INTERIOR VIEW SHOWN (COVER REMOVED)



NOTES

Q'TY./UNIT	MODEL USED ON	ASS'Y. NO.
1	RAC-41	
1	RAC-34	
1	RAC-31	
SEE CHART		
SCALE	CODE	

REQ'D.	ITEM	PART NUMBER	DESCRIPTION	SYMBOL
1	6	SEE CHART	SCHEMATIC, DIAGRAM	
4	5	SFB0256SN4	SCREW, THREAD CUTTING	
1	4	AD-101-1/6	DESSICANT	
1	3	MS-933	HOLDER DESSICANT	
1	2	SEE CHART	TRANSFORMER & MTG PLATE SUB-ASS'Y	
1	1	AX-315	CASE & COVER ASS'Y	

IRV JOHNSON LIST OF MATERIAL					
MATERIAL			THE TECHNICAL MATERIEL CORP. MAMARONECK, NEW YORK		
FINISH			TITLE FINAL ASSEMBLY		
UNLESS OTHERWISE SPECIFIED DIMENSIONS ARE IN INCHES AND INCLUDE CHEMICALLY APPLIED OR PLATED FINISHES			DRAWN M.J. TANTILLO DATE 9-20-62		
DECIMALS .X ± .05 .XX ± .01 .XXX ± .005			CHECKED DATE 9-20-62		
FRACTIONS ± 1/64 ANGLES ± 0° 30'			ELECT. DES. DATE 9/21/62		
TOLERANCES			MECH. DES. DATE 9-21-62		
			FINAL APPROVAL DATE		
			A-3082		
			SHEET		
			REV. LTR.		

NOTICE TO PERSONS RECEIVING THIS DRAWING

THE TECHNICAL MATERIEL CORPORATION claims proprietary right in the material disclosed herein. This drawing is issued in confidence for engineering information only and may not be reproduced or used to manufacture anything shown hereon without permission from THE TECHNICAL MATERIEL CORPORATION to the user. This drawing is loaned for mutual assistance and is subject to recall at any time.

Property of:
THE TECHNICAL MATERIEL CORPORATION
MAMARONECK, NEW YORK

A-3082 E