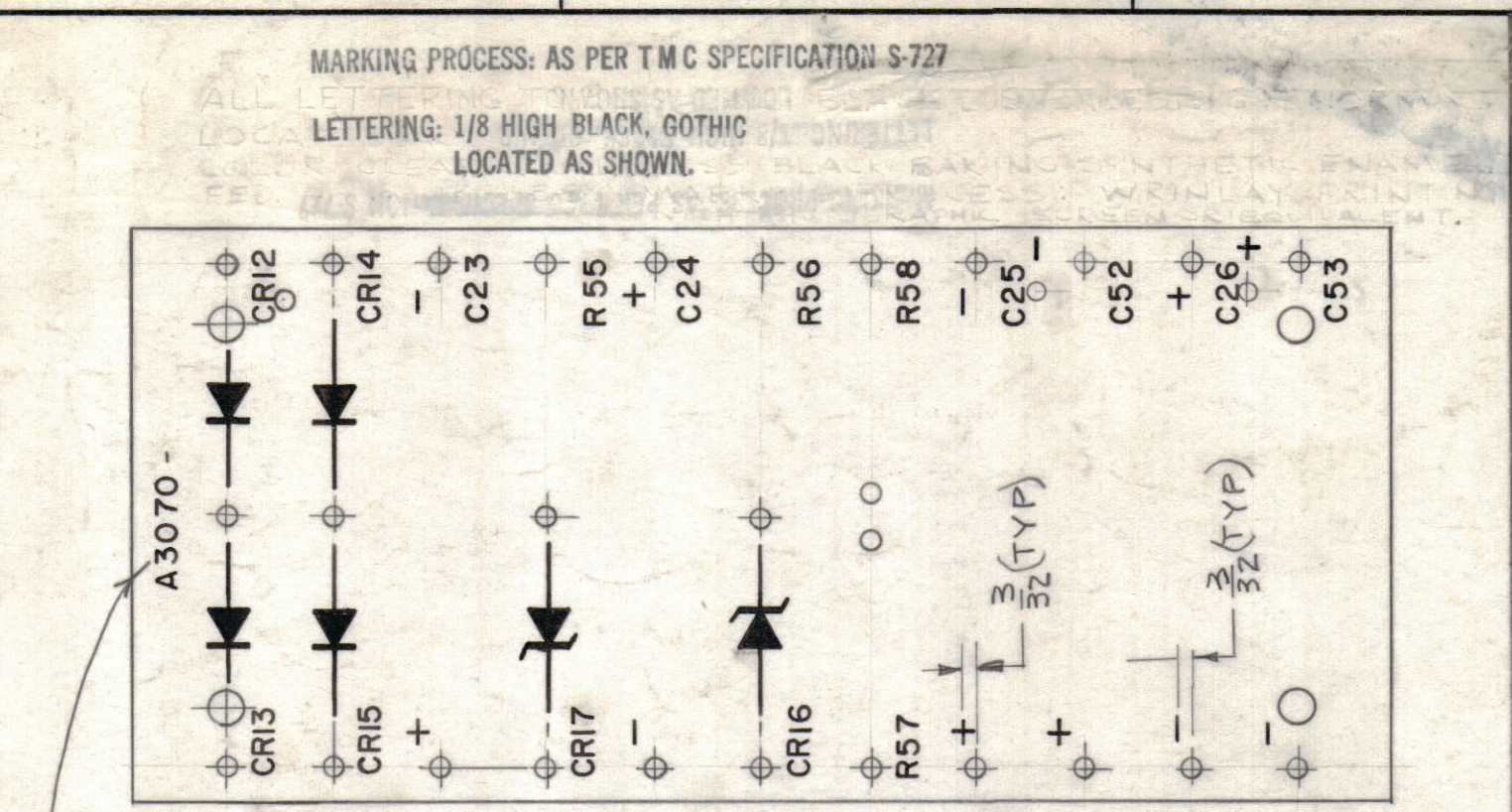
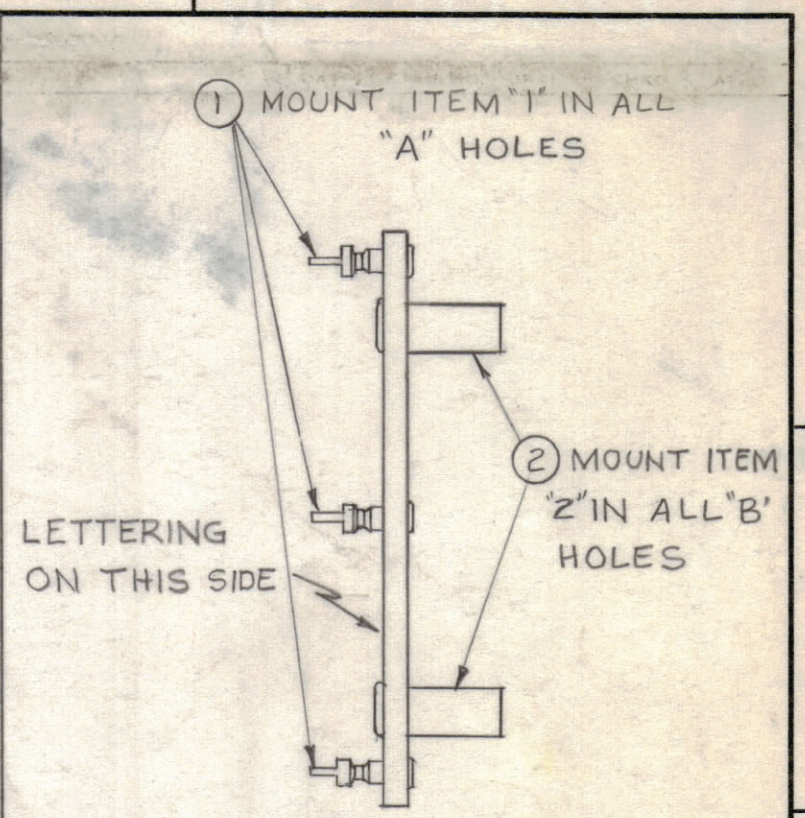


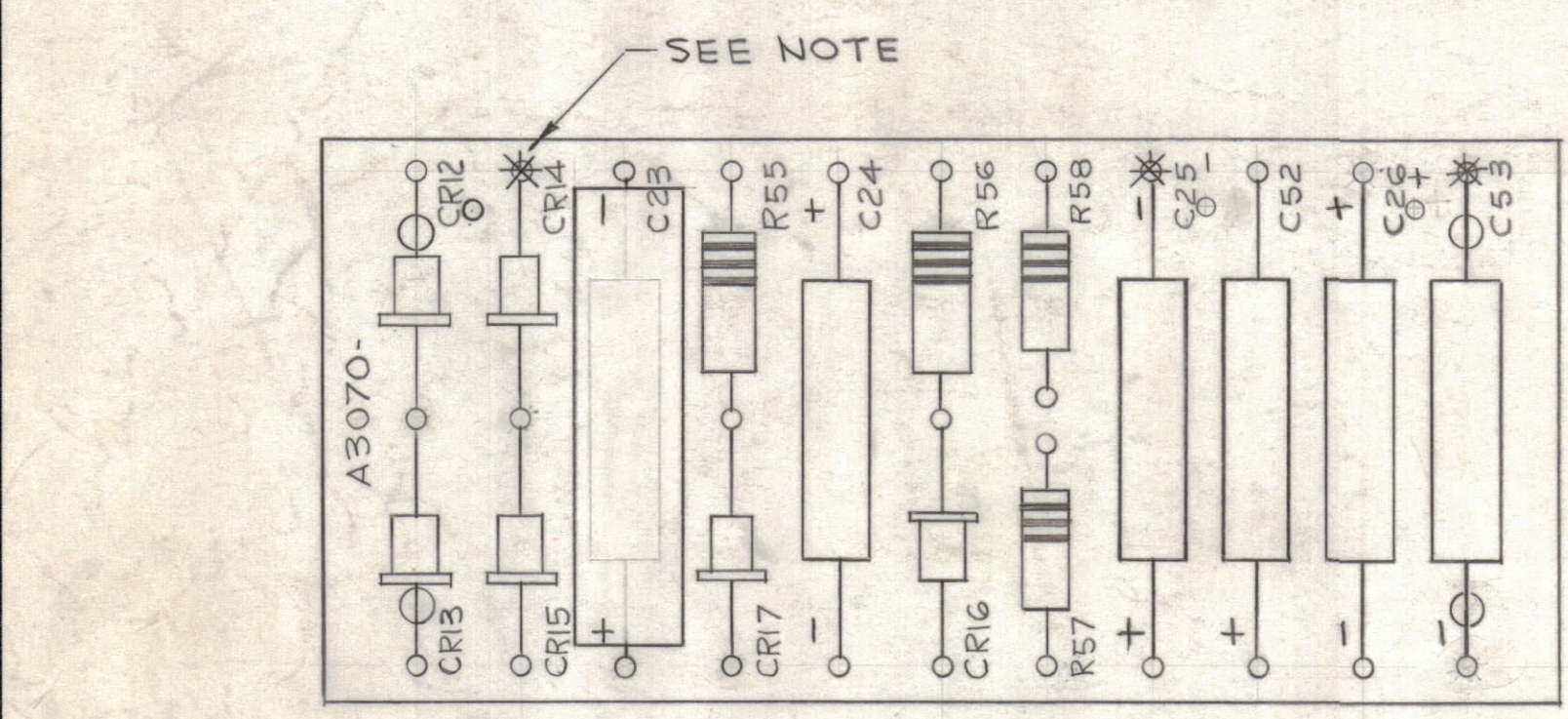
STAGE 1 - MACHINING (A 3070-1)
MATERIAL ~ 3/32 THK. XXXP PHENOLIC NATURAL FINISH



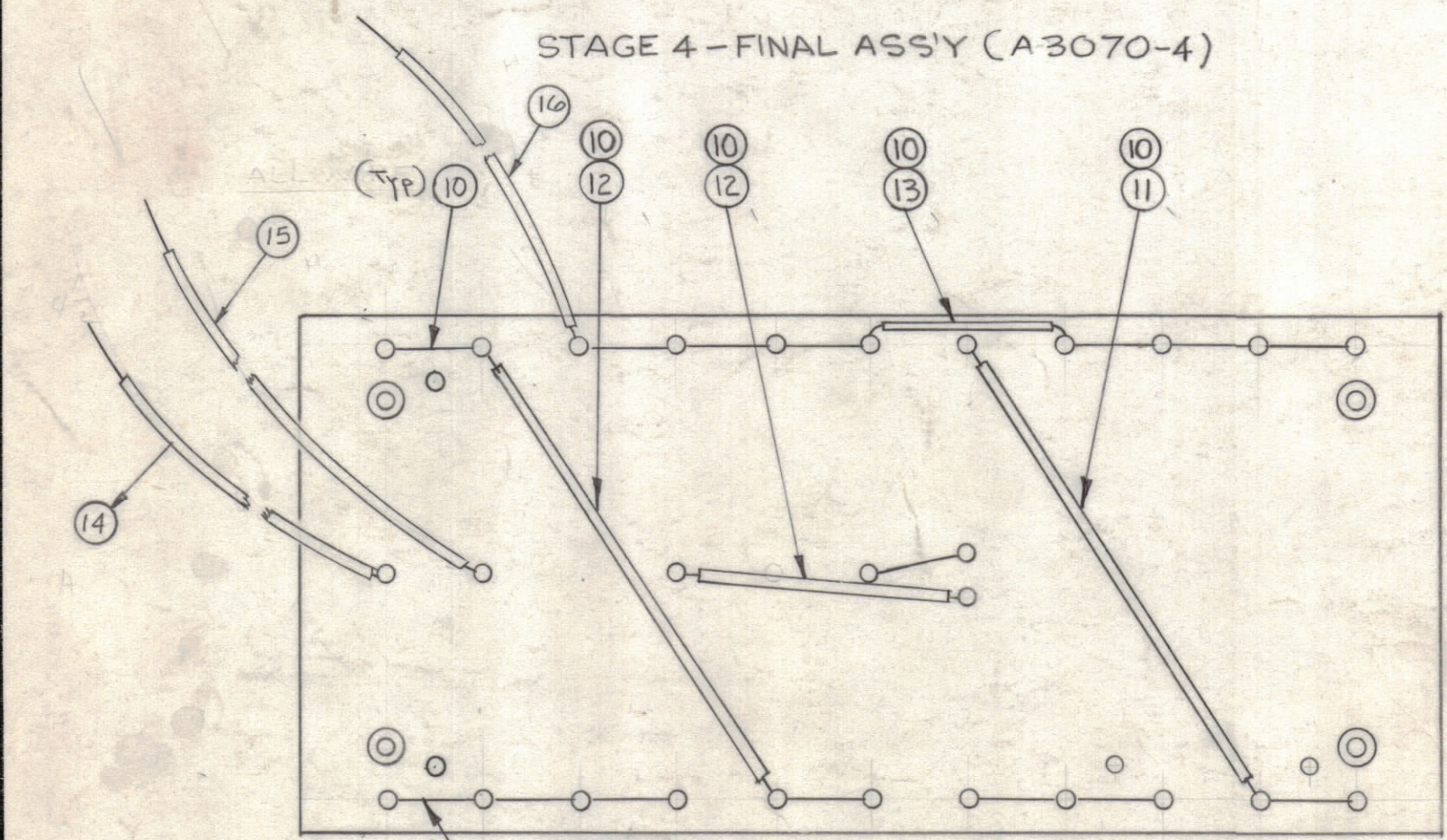
MARK TMC PART NO. W/LATEST REV. LETTER
STAGE 2 - LETTERING (A 3070-2)



STAGE 3 - SUB ASSY (A 3070-3)



NOTE: ~ * DENOTES DO NOT SOLDER.



STAGE 4 - FINAL ASSY (A 3070-4)

NOTICE TO PERSONS RECEIVING THIS DRAWING
THE TECHNICAL MATERIEL CORPORATION has a proprietary right in the material disclosed herein. This drawing is issued in confidence for engineering information only and may not be reproduced or used to manufacture anything shown hereon without permission from THE TECHNICAL MATERIEL CORPORATION to the user. This drawing is loaned for mutual assistance and is subject to recall at any time.

Property of:
THE TECHNICAL MATERIEL CORPORATION
MAMARONECK, NEW YORK

REQ'D.	ITEM	PART NUMBER	DESCRIPTION	SYMBOL
1	17	CE-116-5	CAPACITOR, ELECTROLYTIC	C23
6	16	MWC-20(7)U0	WIRE, HOOK UP	BLK
4 1/2"	15	MWC-20(7)U91	WIRE, HOOK UP	WH/BRN
4 1/2"	14	MWC-20(7)U91	WIRE, HOOK UP	WH/BRN
1 1/8"	13	PX-104-1-.034	INSULATION, SLEEVING	BLACK
1 3/4"	12	PX-104-6-.034	INSULATION, SLEEVING	BLUE
6"	11	PX-104-3-.034	INSULATION, SLEEVING	RED
36"	10	WL-100-7	WIRE, #22 BUSS	
X	9	BS-100	SOLDER, SOFT	
2	8	RC32GF470K	RESISTOR, FIXED, COMPOSITION.	R57, 58
2	7	RC42GF181K	RESISTOR, FIXED, COMPOSITION.	R55, 56
4	6	CE-105-200-25	CAPACITOR, ELECTROLYTIC, MIN.	C25, 26, 52, 53
1	5	CE-105-100-25	CAPACITOR, ELECTROLYTIC, MIN.	C24
2	4	IN1524	DIODE, ZENER	CR16, 17
4	3	IN1692	DIODE, SILICON	CR12, 13, 14, 15
4	2	TE-108-17	STAND OFF, RIVET TYPE	
28	1	TE-109-2	SPLIT TERMINAL LUG	

STRUMMER		LIST OF MATERIAL			
MATERIAL		THE TECHNICAL MATERIEL CORP. MAMARONECK, NEW YORK			
FINISH		TITLE TERMINAL BOARD & COMPONENT ASSY POWER SUPPLY			
DRAWN	W.S.	DATE	7/12/62	FINAL APPROVAL	DATE
CHECKED	Hoe	DATE	10/10/62		11-27-62
UNLESS OTHERWISE SPECIFIED DIMENSIONS ARE IN INCHES AND INCLUDE CHEMICALLY APPLIED OR PLATED FINISHES		ELECT. DES.		DATE	
SCALE 1:1		MECH. DES.		DATE	
TOLERANCES		ANGLES		DATE	
DECIMALS		FRACTIONS		DATE	
.X ± .05		± 1/64		11-27-62	
.XX ± .01		± 0° 30'		11-27-62	
.XXX ± .005				11-27-62	
THE CONTENTS OF THIS DRAWING ARE THE EXCLUSIVE PROPERTY OF THE TECHNICAL MATERIEL CORP. ITS UNAUTHORIZED USE OR REPRODUCTION IN WHOLE OR IN PART IS STRICTLY FORBIDDEN.		SHEET		REV. LTR.	

SYM	DESCRIPTION	DATE	E.M.N. NO.	DRAFT	CHKD	APPD
E	ADDED NEW LENGTH TO ITEM 16, TO IT & ADD-25 TO PIN	3-16-67	1797B	L.A.K.		
D	ITEM (6) WAS CE-105-200-15, NOTE ADDED TO TMC NO.	6-9-66	16357			
C	ITEM (5) QTY WAS (2), ITEM (17) ADDED.	8-1-63	3611	AL.		
B	ITEM (1) REQ WAS 30	4-22-62	8839			
A	ITEMS (1) REQ WAS 3", (12) REQ WAS 4 1/2" ITEMS (11), (12), (13) WERE PX-104-2-.022, PX-104-6-.022, PX-104-1-.022	4-8-63	8698			