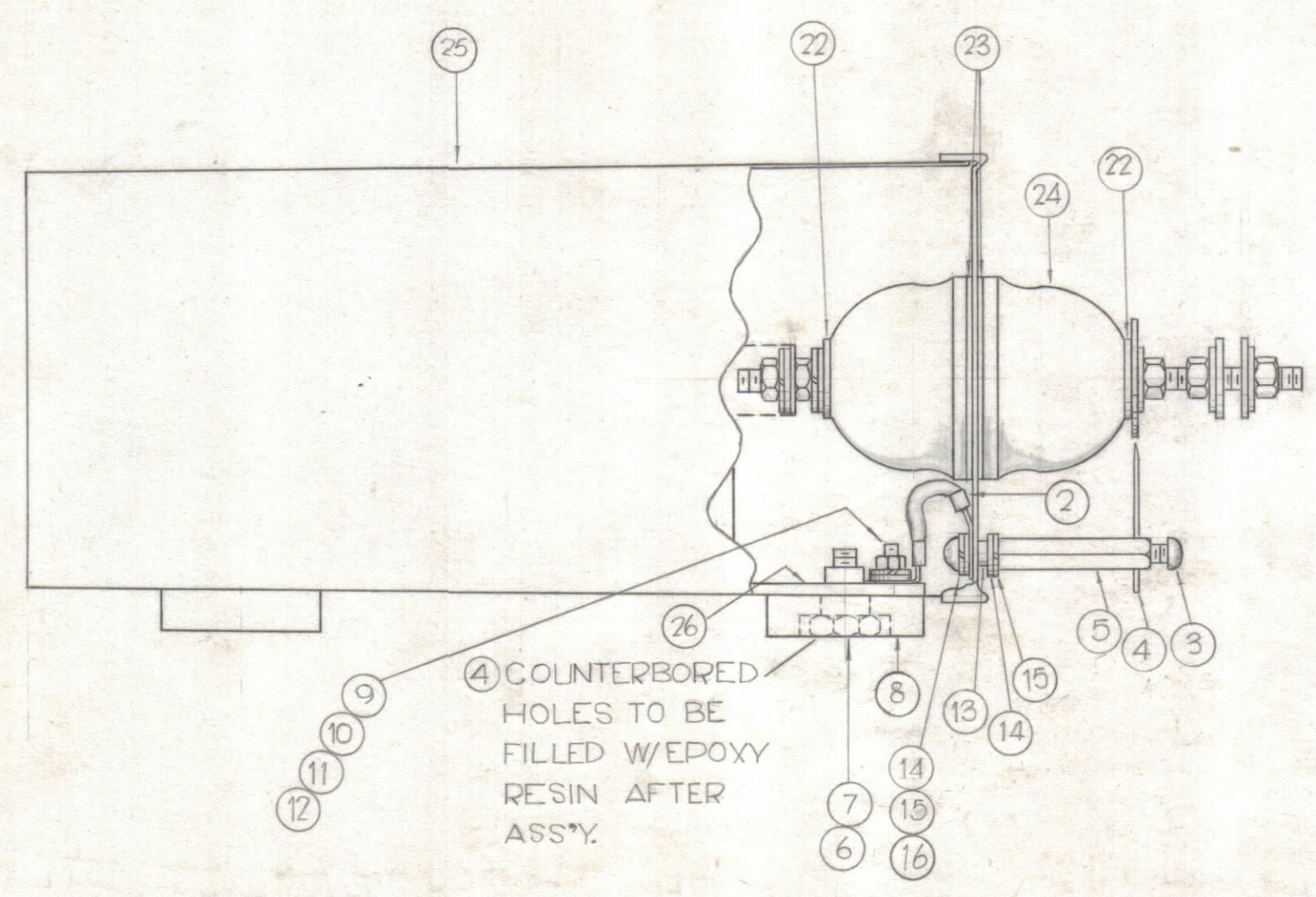
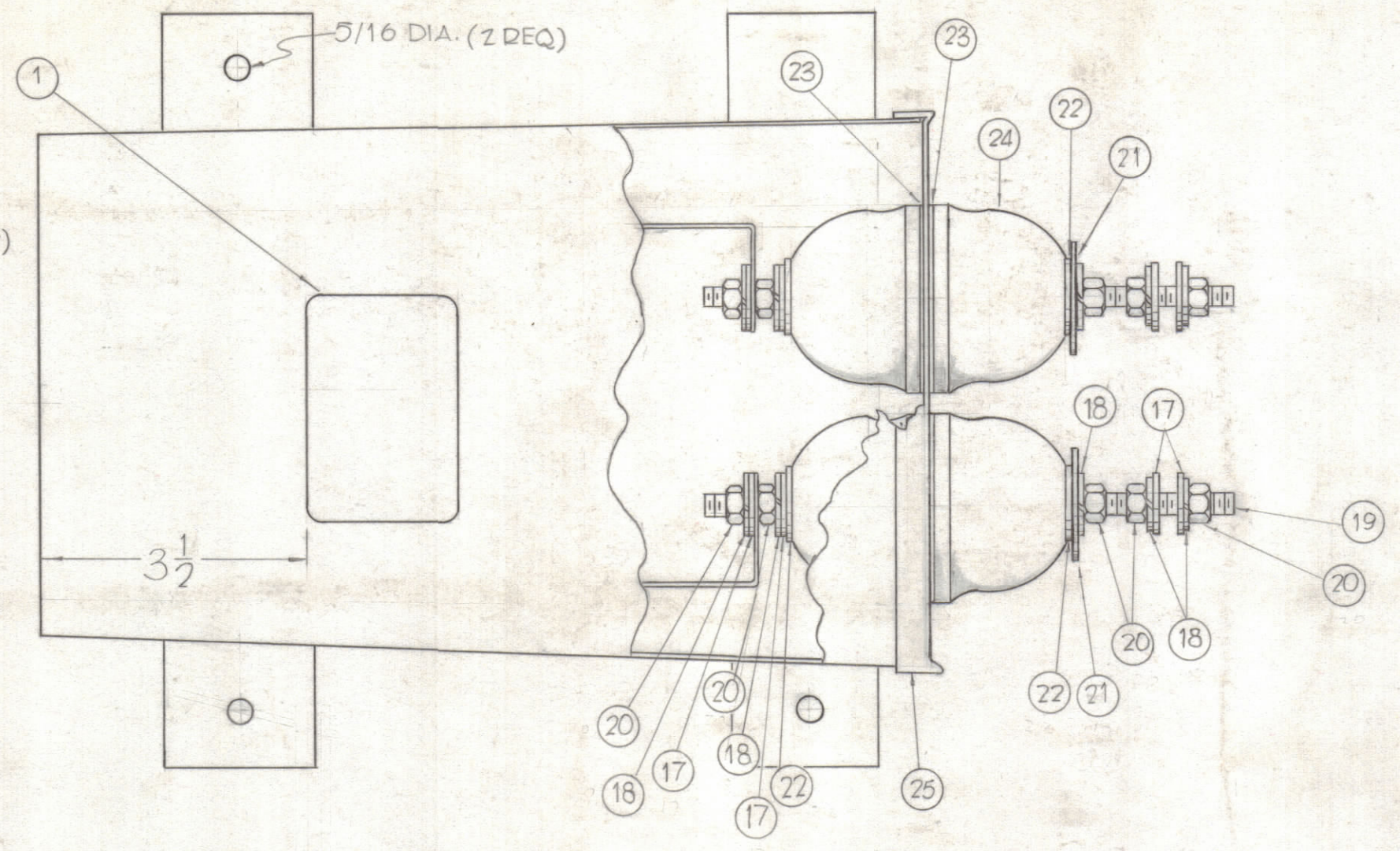


| REVISIONS | | | | | | |
|-----------|-----|-------------|------|------------|-------|-----------|
| ZONE | SYM | DESCRIPTION | DATE | E.M.N. NO. | DRAFT | CHKD APPD |

-POTTING INFORMATION-

1. USE SLEEVE TO PROTECT BOLT IN THE END OF THE CASE.
2. POUR POTTING COMPOUND (ITEM 27) GL-123 TO JUST COVER TOP OF XFMR BY APPROX. 1/4
3. AFTER SETTING, REMOVE SLEEVE AND SEAL THE COVER WITH EPOXY RESIN. BE SURE THAT THE INSIDE BOWLS ARE IN PLACE.



| | | | |
|----|----|----------------|----------------------------|
| X | 27 | GL-123 | POTTING COMPOUND |
| 1 | 26 | TR-176 | TRANSFORMER, B.F. |
| 1 | 25 | PX-668 | CASE & COVER |
| 4 | 24 | NS-115 | CAP. SULFATING |
| 4 | 23 | GA-126 | GASKET, INNER |
| 4 | 22 | RY-112 | GASKET, SHOULDERS |
| 2 | 21 | PM-723-1NR | CONTACT, SPARK GAP |
| 10 | 20 | NTH2520ND14 | NUT, HEX |
| 2 | 19 | SM2520ND5.25 | BOD, THREADED |
| 10 | 18 | LWS25MNR | LOCKWASHED, SPLIT |
| 8 | 17 | FW25HNR | WASHER, FLAT |
| 2 | 16 | SCBP0832ND12 | SCREW, MACHINE |
| 4 | 15 | LWS08MNR | LOCKWASHED, SPLIT |
| 4 | 14 | FW08HNR | WASHER, FLAT |
| 2 | 13 | GA-137-3 | GASKET, NEOPRENE |
| 2 | 12 | SCFP1032BN8 | SCREW, MACHINE |
| 2 | 11 | FW10HBN | WASHER, FLAT |
| 2 | 10 | LWS10MRN | LOCKWASHED, SPLIT |
| 2 | 9 | NTH1032BN12 | NUT, HEX |
| 2 | 8 | MS-2680 | MOUNTING BRACKET |
| 4 | 7 | SCHH2520SS14 | SCREW HEX HEAD |
| 4 | 6 | LWS25MSS | LOCKWASHED, SPLIT |
| 2 | 5 | PM-721-2NR1.87 | POST |
| 2 | 4 | PM-724-1NR | SPARK BOD |
| 2 | 3 | SCBP0632NR5 | SCREW, MACHINE |
| 2 | 2 | CA-409-68-2.00 | GROUND STRAP ASSY |
| 1 | 1 | NP-412 | NAME PLATE, IDEN. ADHESIVE |

A-3068

NOTICE TO PERSONS RECEIVING THIS DRAWING

THE TECHNICAL MATERIEL CORPORATION claims proprietary right in the material disclosed herein. This drawing is issued in confidence for engineering information only and may not be reproduced or used to manufacture anything shown herein without permission from THE TECHNICAL MATERIEL CORPORATION to the user. This drawing is loaned for mutual assistance and is subject to recall at any time.

Property of:
THE TECHNICAL MATERIEL CORPORATION
 MAMARONECK, NEW YORK

| REQ'D. | | ITEM | PART NUMBER | DESCRIPTION | SYMBOL |
|---------------------------------|--|-------------|------------------------------------------------------|-------------|----------------|
| BUDETTI LIST OF MATERIAL | | | | | |
| MATERIAL | | | THE TECHNICAL MATERIEL CORP. MAMARONECK, NEW YORK | | |
| FINISH | | | TITLE FINAL ASSEMBLY | | |
| DRAWN | | J.F. VITTO | DATE | | FINAL APPROVAL |
| CHECKED | | J.C.S. | DATE | | BP |
| ELECT. DES. | | J.C.S. | DATE | | A-3068 |
| MECH. DES. | | AA | DATE | | 8-31-62 |
| DECIMALS | | .X ± .05 | FRACTIONS | | ± 1/64 |
| | | .XX ± .01 | ANGLES | | ± 0° 30' |
| | | .XXX ± .005 | TOLERANCES | | |
| SHEET | | | | | |
| REV. LTR. | | | | | |

| | | |
|-------------------------------------------------------------------------------------------------------------------------------------------------------------------------|---------------|------------|
| 1 | TRC 3500 | |
| | 52B/52B | |
| Q'TY./UNIT | MODEL USED ON | ASS'Y. NO. |
| SCALE | CODE | |
| THE CONTENTS OF THIS DRAWING ARE THE EXCLUSIVE PROPERTY OF THE TECHNICAL MATERIEL CORP. ITS UNAUTHORIZED USE OR REPRODUCTION IN WHOLE OR IN PART IS STRICTLY FORBIDDEN. | | |

NOTES