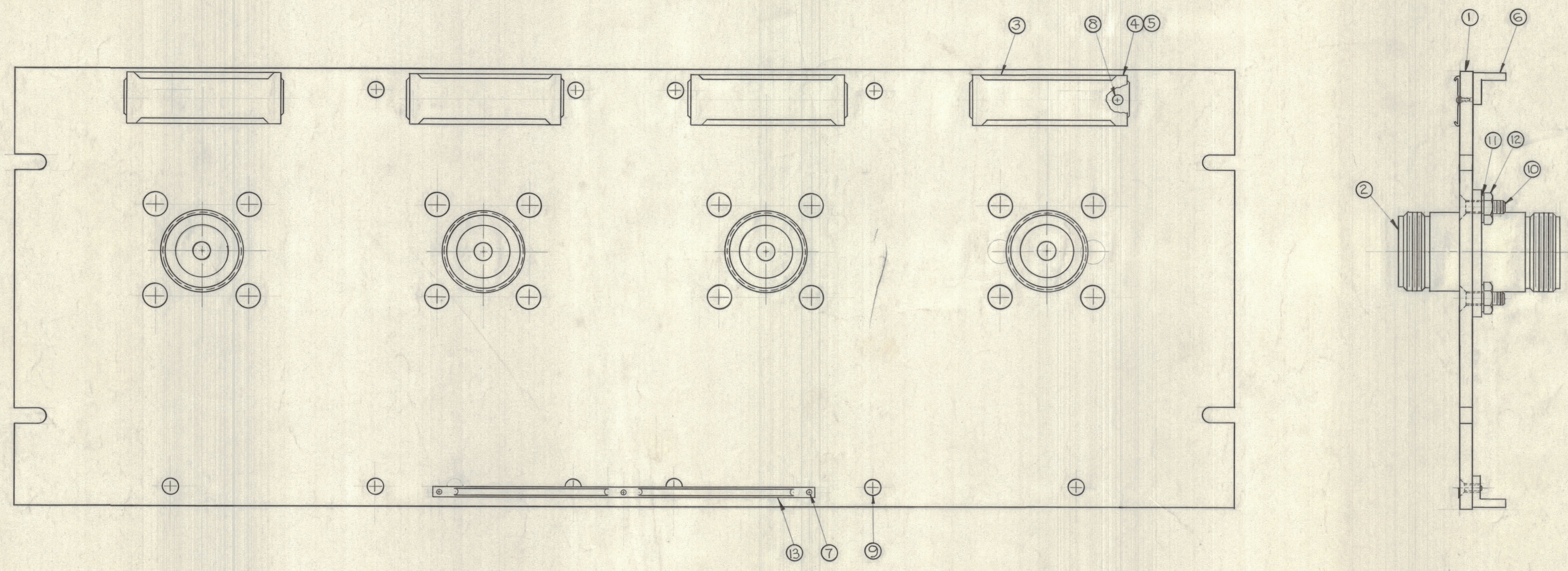


REVISIONS				
ZONE	SYM	DESCRIPTION	DATE	E.M.N. NO.



A-3060

NAMEPLATE NOTE :
 NP-232-1 MILITARY NAMEPLATE
 NP-414 COMMERCIAL NAMEPLATE

REQ'D.	ITEM	PART NUMBER	DESCRIPTION	SYMBOL
1	13	SEE NAMEPLATE NOTE	NAMEPLATE IDENTIFICATION	
16	12	NTH1032BN12	NUT, HEXAGONAL	
16	11	LWE10MRN	WASHER, LOCK EXTERNAL	
16	10	SCFP1032BN9	SCREW, MACHINE	
12	9	SCFP0632BN5	SCREW, MACHINE	
8	8	SCFP0348BN4	SCREW, MACHINE	
3	7	SFF0256SN3	SCREW, THREAD CUTTING	
2	6	PM-490	BRACE, PANEL	
4	5	PX-623-17	GUARD, TAB	
4	4	PR-103-1	TAB, PAPER	
4	3	MS-2669	HOLDER, CARD	
4	2	JJ-220	ADAPTOR, CONNECTOR	
1	1	MS-2934	MACHINING, FRONT PANEL	

PRITCHARD LIST OF MATERIAL			
MATERIAL		THE TECHNICAL MATERIEL CORP. MAMARONECK, NEW YORK	
FINISH		TITLE JACK PATCH PANEL LC TOLC JPP-9D9X4	
UNLESS OTHERWISE SPECIFIED DIMENSIONS ARE IN INCHES AND INCLUDE CHEMICALLY APPLIED OR PLATED FINISHES	DRAWN R. J. J.	DATE 8-13-62	FINAL APPROVAL B.P.
CHECKED H.P.	DATE 8-7-63	A-3060	
DECIMALS .X ± .05 .XX ± .01 .XXX ± .005	FRACTIONS 1/64 ± 1/64 ANGLES ± 0° 30'	ELECT. DES.	MECH. DES.
TOLERANCES		DATE	SHEET

1	JPP-9D9X4	ASSY. NO.
SCALE	MODEL USED ON	
DO NOT SCALE	CODE	
THE CONTENTS OF THIS DRAWING ARE THE EXCLUSIVE PROPERTY OF THE TECHNICAL MATERIEL CORP. ITS UNAUTHORIZED USE OR REPRODUCTION IN WHOLE OR IN PART IS STRICTLY FORBIDDEN.		

NOTES