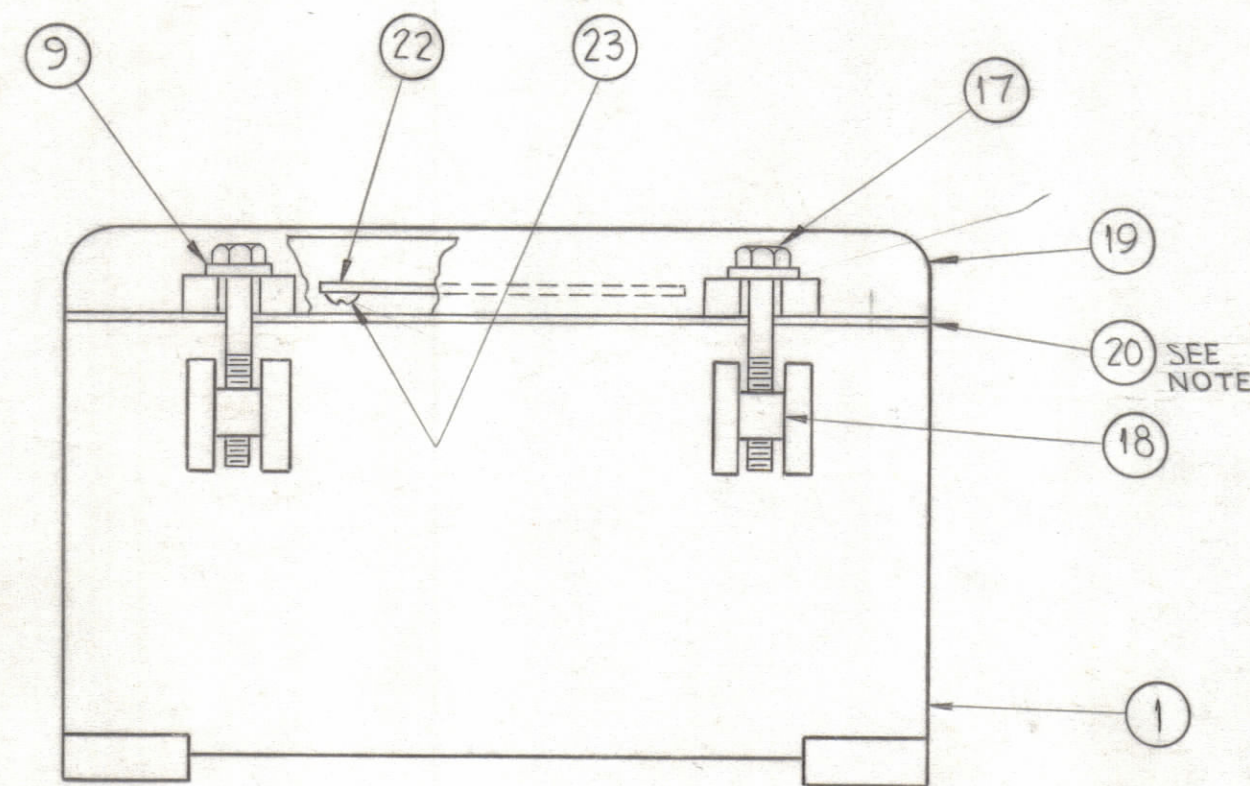
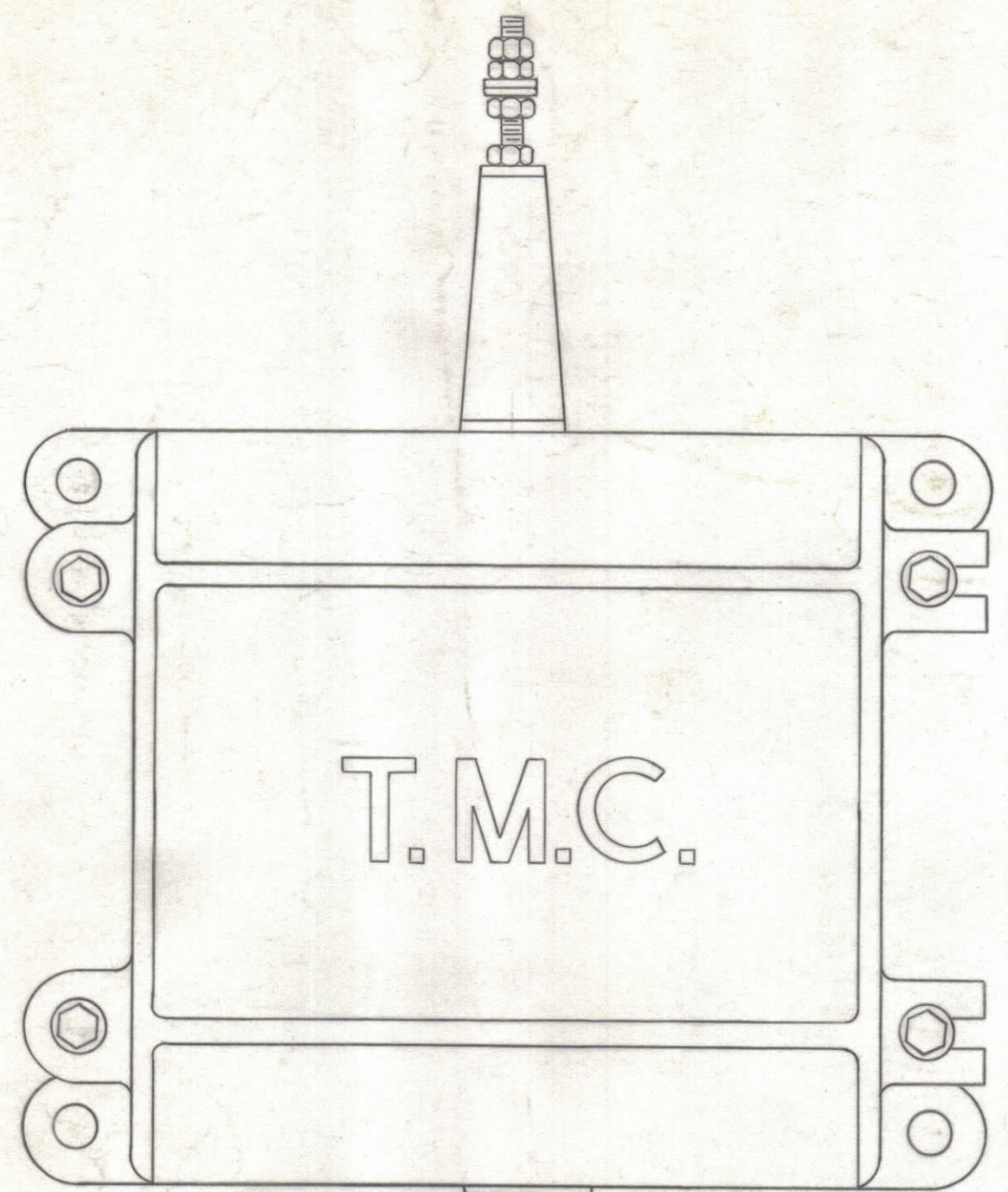


**NOTICE TO PERSONS RECEIVING THIS DRAWING**

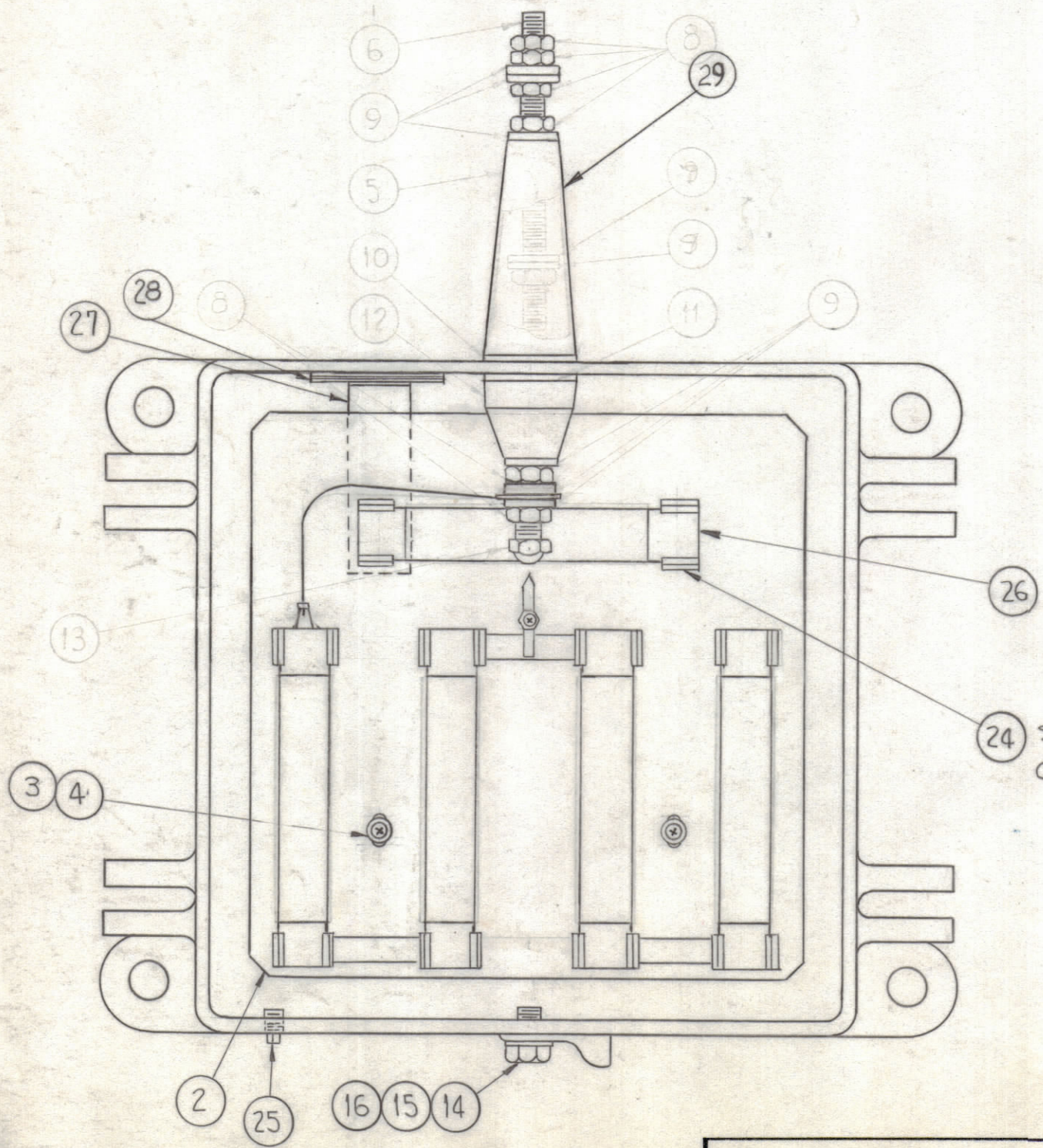
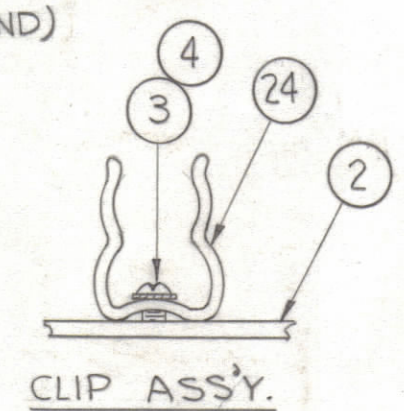
THE TECHNICAL MATERIEL CORPORATION claims proprietary right in the material disclosed hereon. This drawing is issued in confidence for engineering information only and may not be reproduced or used to manufacture anything shown hereon without permission from THE TECHNICAL MATERIEL CORPORATION to the user. This drawing is loaned for mutual assistance and is subject to recall at any time.

Property of:  
**THE TECHNICAL MATERIEL CORPORATION**  
 MAMARONECK, NEW YORK

REVISIONS						
ZONE	SYM	DESCRIPTION	DATE	E.M.N. NO.	DRAFT	CHKD
E2	A	ITEMS (27) & (28) ADDED	10-22-62	7475		
E2,D2	B	ITEM (26) WAS RR-115-100, HARDWARE CLARIFIED, PICTORIAL CLARIFIED	8-22-63	8604		
	C	ON B/M: IT. 5, 6, 7, 8, 10, 11, 12, & 13, DELE; IT. 9, QTY WAS 11; IT. 26 WAS RR-133-1, RESISTOR; IT. 29 ADD.	12-21-64	13040		
BCD, 67		PICT: CALLOUTS, 5, 6, 7, 8, 9, 10, 11, 12, & 13, DELE; IT. 29 ADD.				



NOTE: ITEM (20)  
 CEMENT GASKET GA-103 (ITEM 20)  
 TO COVER (PM-105) USING  
 ITEM 21 (PLIOBOND)



QTY	ITEM	PART NUMBER	DESCRIPTION	SYMBOL
1	29	A-102	INSULATOR, ASSY.	
2	28	AD-101-1/6	DESICANT	
1	27	MS-933	HOLDER, DESICANT	
1	26	RR-115-100	RESISTOR, ASSY.	
1	25	SC-134	PLUG, PIPE	
2	24	FC-101	CLIP, FUSE	
4	23	SFB0256SN4	SCREW, THREAD CUTTING	
1	22	LD-1140	SCHEMATIC, DIAGRAM	
X	21	GL-101-2	CEMENT, PLIOBOND	
1	20	GA-103	GASKET, COVER	
1	19	PM-105	COVER	
4	18	PM-100	NUT, PLAIN BARREL	
4	17	SCHH2520SS28	BOLT, MACHINE	
1	16	LWS 25 MSS	WASHER, SPLIT	
1	15	SCHH2520SS8	BOLT, MACHINE	
1	14	TE-178-2	LUG, TERMINAL	
1	13	DELETED	NUT, CAP	
1	12	DELETED	INSULATOR, INSIDE	
1	11	DELETED	GASKET, INSIDE	
1	10	DELETED	GASKET, OUTSIDE	
4	9	FW25H55	WASHER, FLAT	
6	8	DELETED	NUT, HEX	
1	7	DELETED	GASKET, NEOPRENE	
1	6	DELETED	INSULATOR STUD, SUB-ASS'Y	
1	5	DELETED	INSULATOR, OUTSIDE	
4	4	LWE08MRN	WASHER, LOCK	
4	3	SCBPO832BN4	SCREW, MACHINE	
1	2	A-3055	RESISTOR & MOUNTING PLATE SUB-ASS'Y.	
1	1	PM-811	CASE, MACHINING	

LIST OF MATERIAL

MATERIAL		THE TECHNICAL MATERIEL CORP. MAMARONECK, NEW YORK			
FINISH		TITLE MAIN ASSEMBLY RTB-10			
UNLESS OTHERWISE SPECIFIED DIMENSIONS ARE IN INCHES AND INCLUDE CHEMICALLY APPLIED OR PLATED FINISHES		DRAWN Ganfippo	DATE 8-27-62	FINAL APPROVAL [Signature]	DATE 8-27-62
DECIMALS .X ± .05 .XX ± .01 .XXX ± .005		CHECKED [Signature]	DATE 8-27-62	DATE 8-27-62	DATE 8-27-62
TOLERANCES ± 1/64 ANGLES ± 0° 30'		ELECT. DES. [Signature]	DATE 8-27-62	DATE 8-27-62	DATE 8-27-62
		MECH. DES. [Signature]	DATE 8-27-62	DATE 8-27-62	DATE 8-27-62

NOTES

THE CONTENTS OF THIS DRAWING ARE THE EXCLUSIVE PROPERTY OF THE TECHNICAL MATERIEL CORP. ITS UNAUTHORIZED USE OR REPRODUCTION IN WHOLE OR IN PART IS STRICTLY FORBIDDEN.