

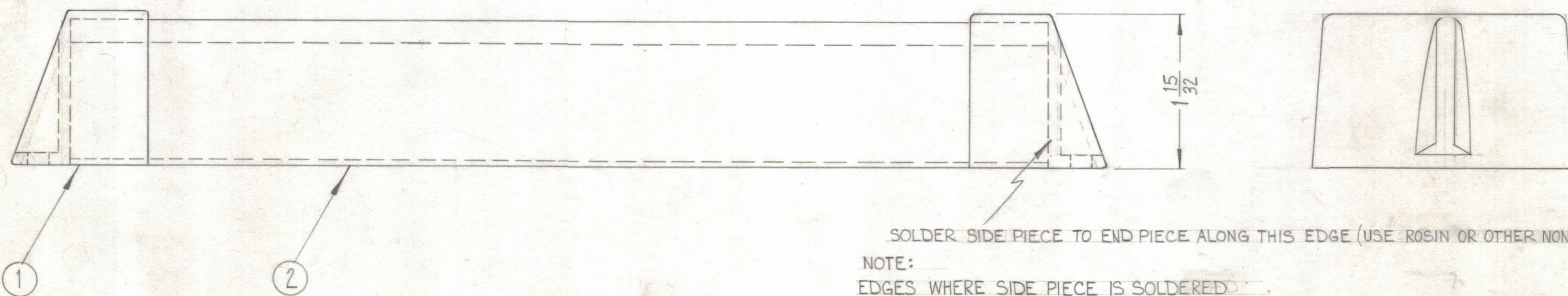
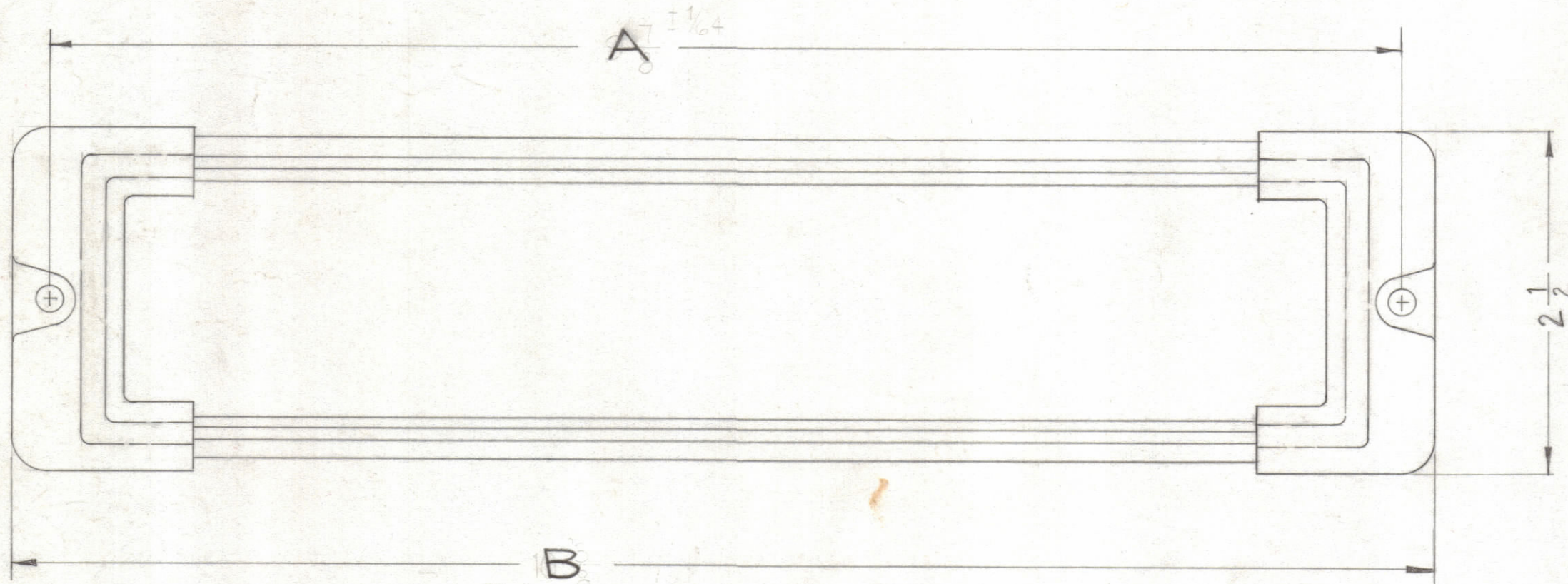
NOTICE TO PERSONS RECEIVING THIS DRAWING

THE TECHNICAL MATERIEL CORPORATION claims proprietary right in the material disclosed hereon. This drawing is issued in confidence for engineering information only and may not be reproduced or used to manufacture anything shown hereon without permission from THE TECHNICAL MATERIEL CORPORATION to the user. This drawing is loaned for mutual assistance and is subject to recall at any time.

Property of:
THE TECHNICAL MATERIEL CORPORATION
MAMARONECK, NEW YORK

TMC PART NO.	ITEM 2	A	LEATH B
A-3053-1	MS-3007-1	9 7/8 ± 1/64	10 3/8
A-3053-2	MS-3007-2	8 5/16 ± 1/64	8 13/16

REVISIONS				
ZONE	SYM	DESCRIPTION	DATE	E.M.N. NO.
H-4	A	CHART ADDED	9-10-63	9907



SOLDER SIDE PIECE TO END PIECE ALONG THIS EDGE (USE ROSIN OR OTHER NON-ACID FLUX).
NOTE:
EDGES WHERE SIDE PIECE IS SOLDERED TO END PIECE MUST BE FLUSH.

FINISH NOTES~
S371~ DEGREASING
S114~ ZINC CHROMATE PRIMER
FED. STD. #595 COLOR 27038 (BLACK SEMI-GLOSS ENAMEL).

REQ'D.	ITEM	PART NUMBER	DESCRIPTION	SYMBOL
X	3	BS-100	SOLDER, SOFT	
2	2	SEE CHART	SIDE PIECE, BEZEL	
2	1	PM-810	END PIECE, BEZEL	

J. STRUMER		LIST OF MATERIAL	
MATERIAL	FINISH	THE TECHNICAL MATERIEL CORP. MAMARONECK, NEW YORK	
SEE NOTE	SEE NOTE	SUB-ASS'Y, BEZEL	
UNLESS OTHERWISE SPECIFIED DIMENSIONS ARE IN INCHES AND INCLUDE CHEMICALLY APPLIED OR PLATED FINISHES	DECIMALS .X ± .05 .XX ± .01 .XXX ± .005	TOLERANCES FRACTIONS ± 1/64 ANGLES ± 0° 30'	DRAWN W.A. Franco CHECKER J. Strumer ELECT. DES. MECH. DES. J. Strumer
DATE	DATE	DATE	DATE
6-9-62	6-10-62	8-13-62	8-13-62
FINAL APPROVAL BP	DATE	SHEET	REV. LTR.
		A-3053	A

Q'TY./UNIT	MODEL USED ON	ASS'Y. NO.
1	LFS-1	A-3054-2
1	HFS-1	A-3054-1

NOTES
THE CONTENTS OF THIS DRAWING ARE THE EXCLUSIVE PROPERTY OF THE TECHNICAL MATERIEL CORP. ITS UNAUTHORIZED USE OR REPRODUCTION IN WHOLE OR IN PART IS STRICTLY FORBIDDEN.

A-3053
A