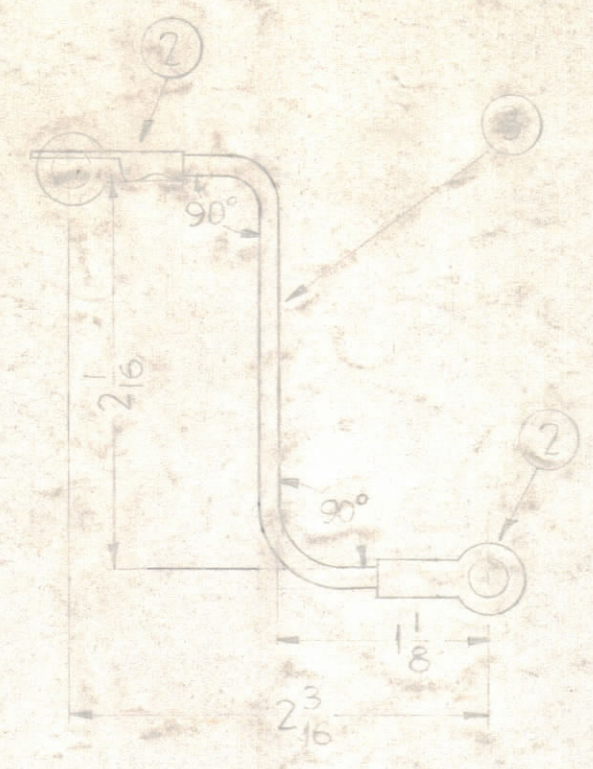
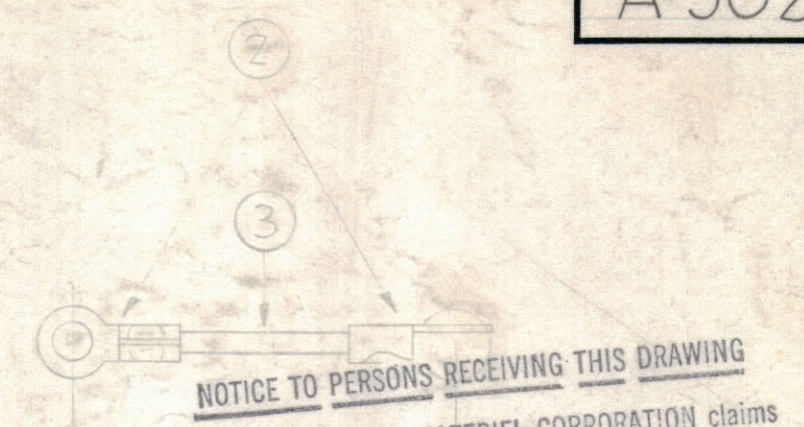


WINDING DETAIL (ITEM 1)



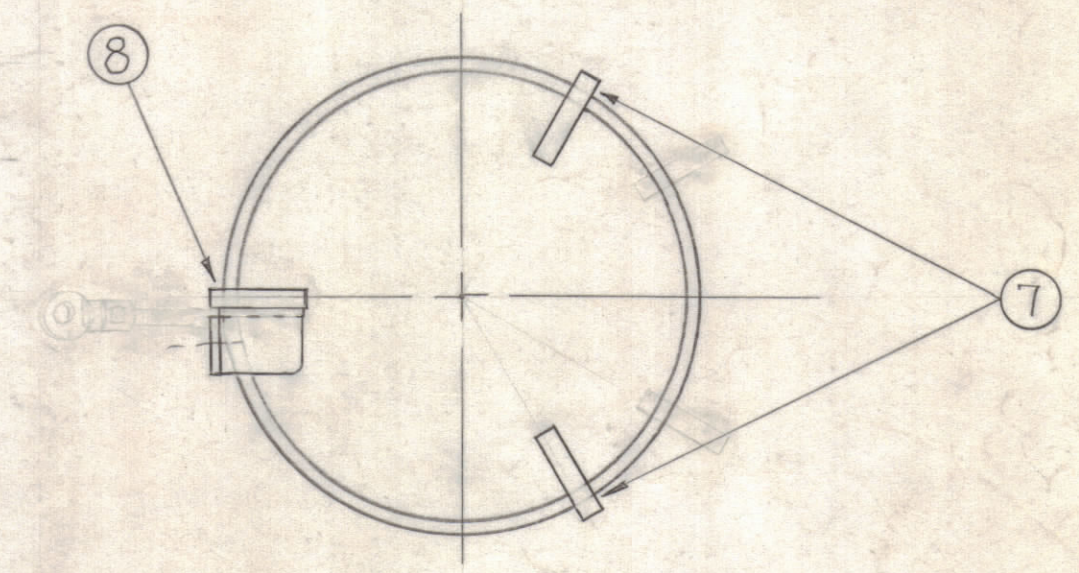
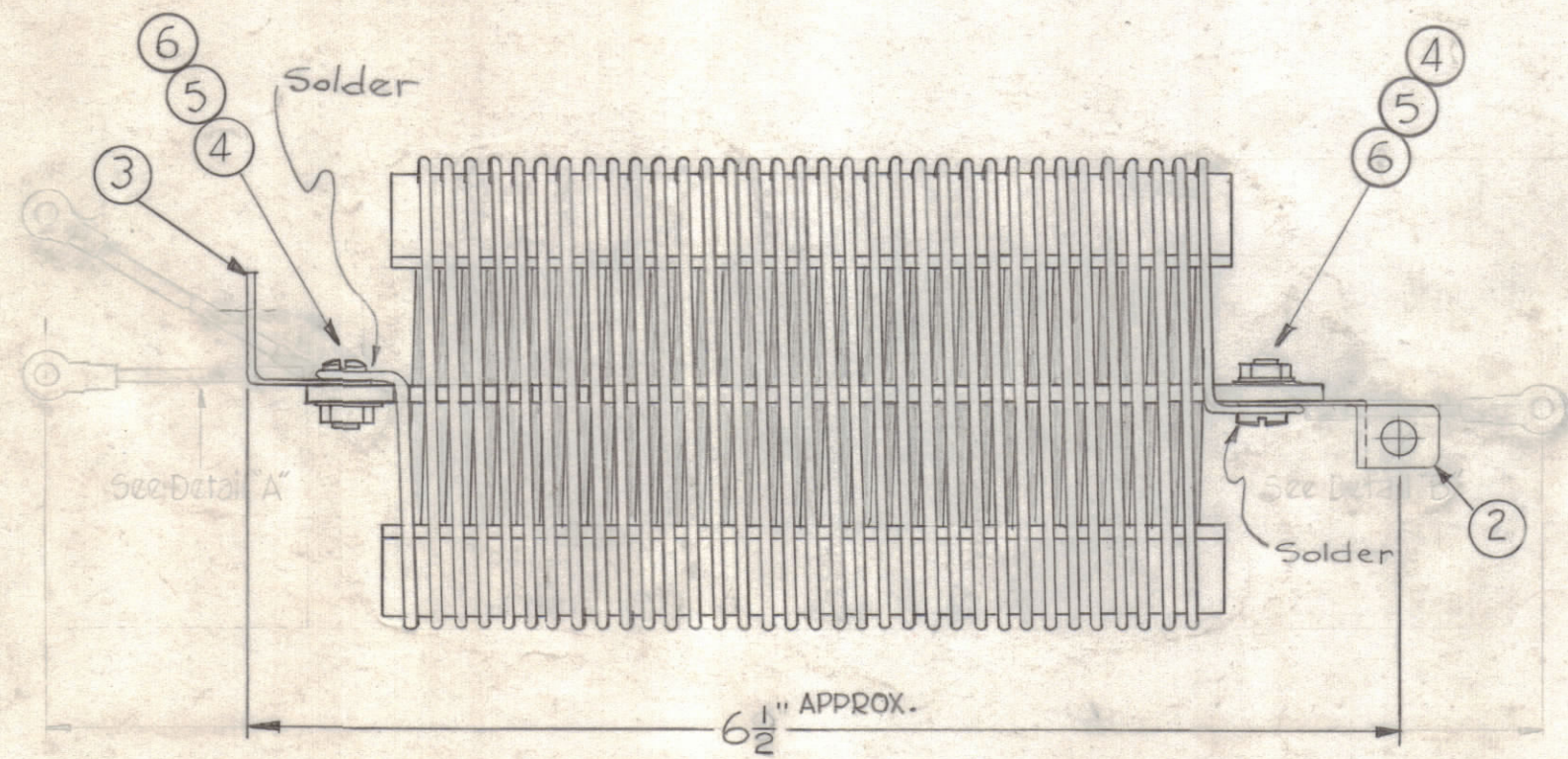
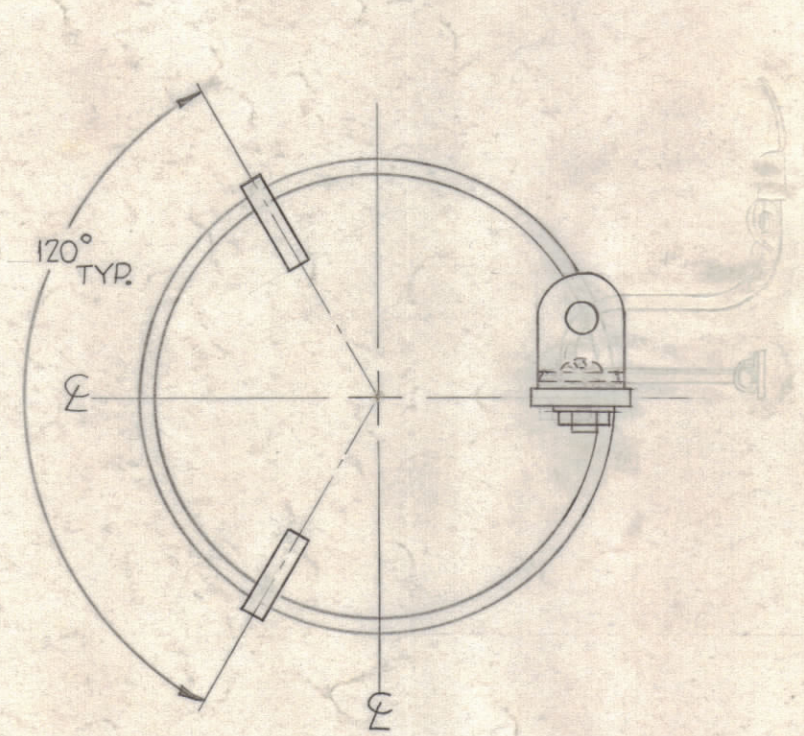
DETAIL A



NOTICE TO PERSONS RECEIVING THIS DRAWING
 THE TECHNICAL MATERIEL CORPORATION claims proprietary right in the material disclosed hereon. This drawing is issued in confidence for engineering information only and may not be reproduced or used to manufacture anything shown hereon without permission from THE TECHNICAL MATERIEL CORPORATION to the user. This drawing is loaned for mutual assistance and is subject to recall at any time.

Property of:
 THE TECHNICAL MATERIEL CORPORATION
 MAMARONECK, NEW YORK

DETAIL B



REQ.	ITEM	PART NO.	DESCRIPTION	SYMBOL
X	9	BS-100	Solder, Soft.	
1	8	PX-609-2	Spacer, Static Choke	
2	7	PX-609-1	Spacer, Static Choke	
2	6	NTH1032BN12	Nut, Hex.	
2	5	FW10HBN	Washer, Flat	
2	4	SCBP1032BN10	Screw, Machine #10-32	
1	3	MS-2665-5	BRACKET	
1	2	MS-2666	BRACKET	
X	1	WI-139-1	Wire, Teflon Insulated	

SYM	ZONE	DESCRIPTION	DATE	CH. NO.	DRAFTS	CHECKER	ENG. APP.
B		#14 PIN CHG. WAS SCBS1032BN6	8-24-72	20850	GE	CL	CL
A		DETAILS "A" & "B" DELETED ITEM (2) WAS TE-141-3; ITEM (3) WAS WL-100-1	9-21-61	5598	EL	WB	WB

UNLESS OTHERWISE SPECIFIED:
 DIMENSIONS ARE IN INCHES
 TOLERANCES ON
 FRACTIONS ± 1/64 DECIMALS ± .005 ANGLES ± 1/2°

SCALE
 MAXIMUM ALLOWABLE TOLERANCES HAVE BEEN DETERMINED AND ANY DEVIATIONS WILL BE CAUSE FOR REJECTION. REMOVE ALL BURRS & SHARP EDGES

REQ. PER UNIT	MODEL	SECTION	ASSY. NO.	DATE
	GPT-40K			6-13-61

FINISH & SPEC. NO.	ELEC. DES. APP.	MECH. DES. APP.	SHEET OF
			A-3023 B