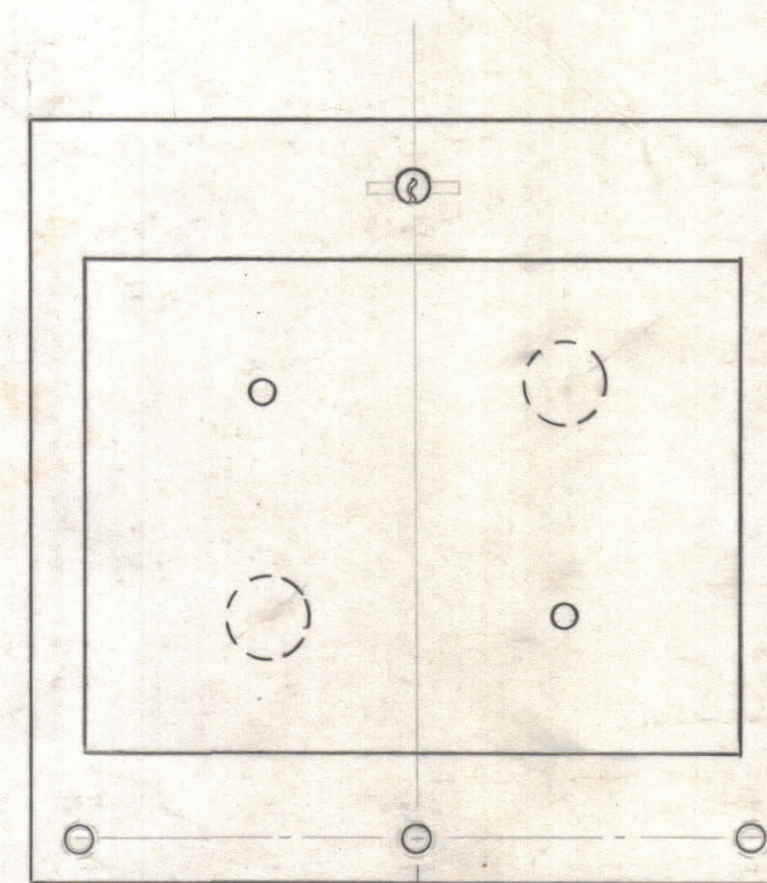
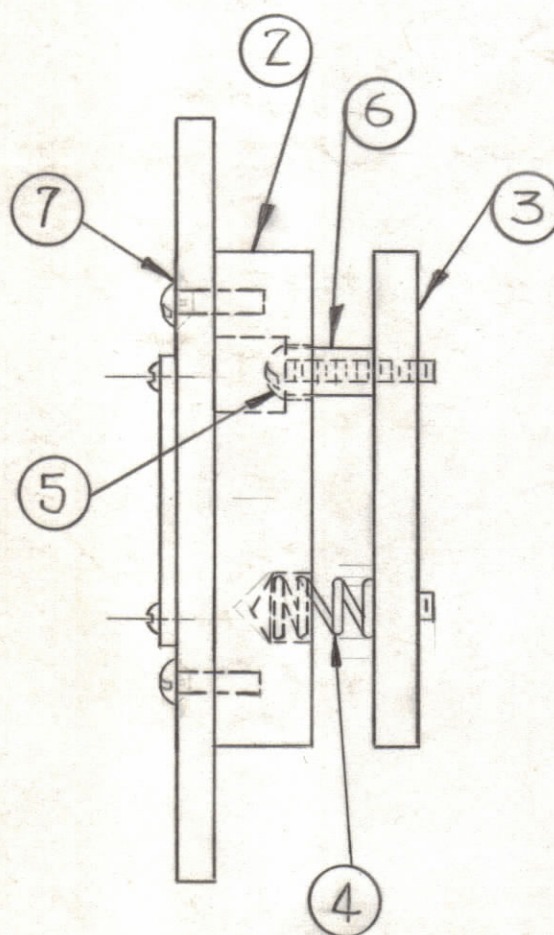
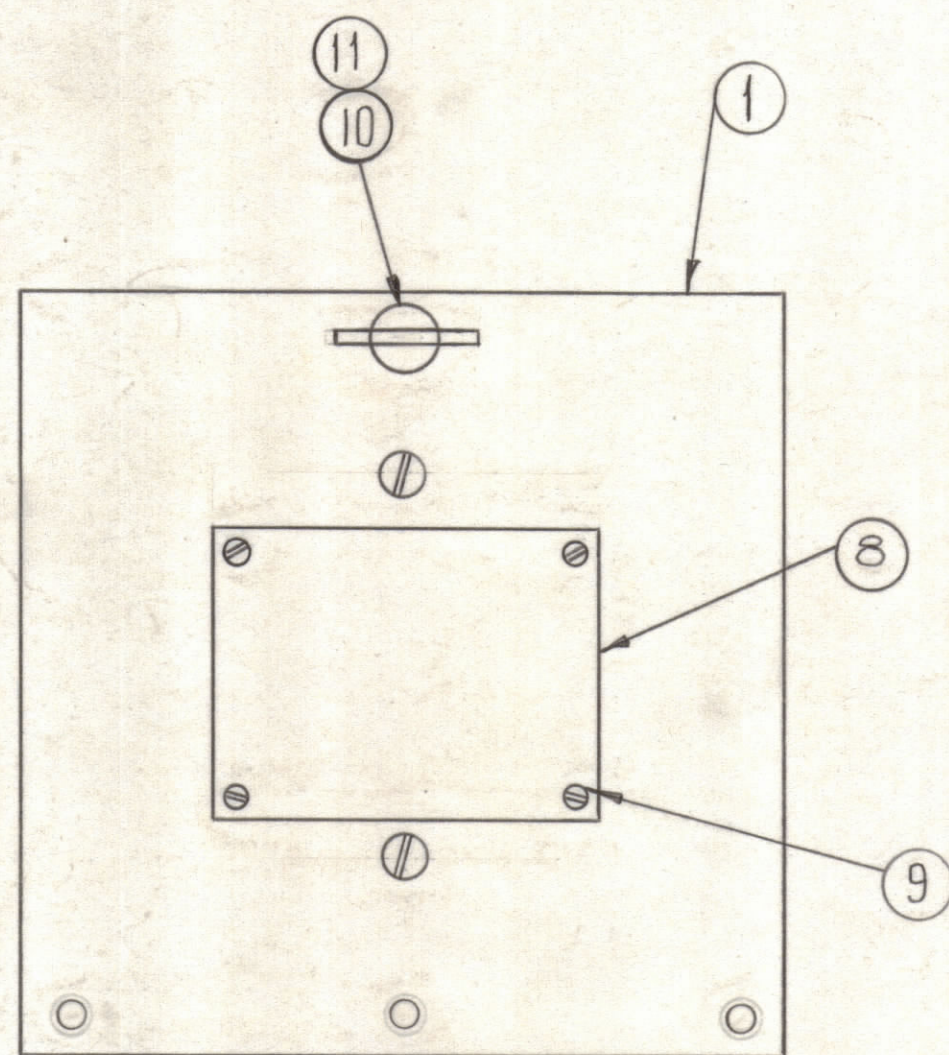


NOTICE TO PERSONS RECEIVING THIS DRAWING

THE TECHNICAL MATERIEL CORPORATION claims proprietary right in the material disclosed hereon. This drawing is issued in confidence for engineering information only and may not be reproduced or used to manufacture anything shown hereon without permission from THE TECHNICAL MATERIEL CORPORATION to the user. This drawing is loaned for mutual assistance and is subject to recall at any time.

Property of:  
THE TECHNICAL MATERIEL CORPORATION  
MAMARONECK, NEW YORK



REQ.	ITEM	PART NO.	DESCRIPTION	SYMBOL
1	11	FS-109-3	RING STUD, RETAINING	
1	10	FS-103-2	WING TYPE	
4	9	SFB0256SN3	SCREW, THREAD CUTTING	
1	8	NP-102-37	NAMEPLATE	
2	7	SCBS0632BN7	SCREW, MACHINE	
2	6	TE-117-7	STAND-OFF SPACER	
2	5	SCBS0832BN10	SCREW, MACHINE	
2	4	SP-103	SPRING	
1	3	MS-138	PLATE	
1	2	IM-100	INSULATOR	
1	1	MS-2562	FRONT DOOR	

REQ. ITEM		PART NO.	DESCRIPTION	SYMBOL
THE TECHNICAL MATERIEL CORP. MAMARONECK, NEW YORK				
STOCK SIZE				
XTAL OVEN DOOR ASSEMBLY				
MATERIAL				
DRAWN		CHECKED		FINAL APPROVAL
R UZZO		JLB		ETD
TYPE & TEMPER		HEAT TREAT. SPEC.		
FINISH & SPEC. NO.		ELEC. DES. APP.		MECH. DES. APP.
		SHEET		OF
		A-3020		

SYM	ZONE	DESCRIPTION	DATE	CH. NO.	DRAFTS	CHECKER	ENG. APP.
UNLESS OTHERWISE SPECIFIED:			SCALE <i>Do Not Scale</i>				
DIMENSIONS ARE IN INCHES			MAXIMUM ALLOWABLE TOLERANCES HAVE BEEN DETERMINED AND ANY DEVIATIONS WILL BE CAUSE FOR REJECTION. REMOVE ALL BURRS & SHARP EDGES				
TOLERANCES ON FRACTIONS ± 1/64			DECIMALS ± .005			ANGLES ± 1/2°	

REQ. PER UNIT	MODEL	SECTION	ASS'Y. NO.	DATE
1	GPE-1			6-9-61