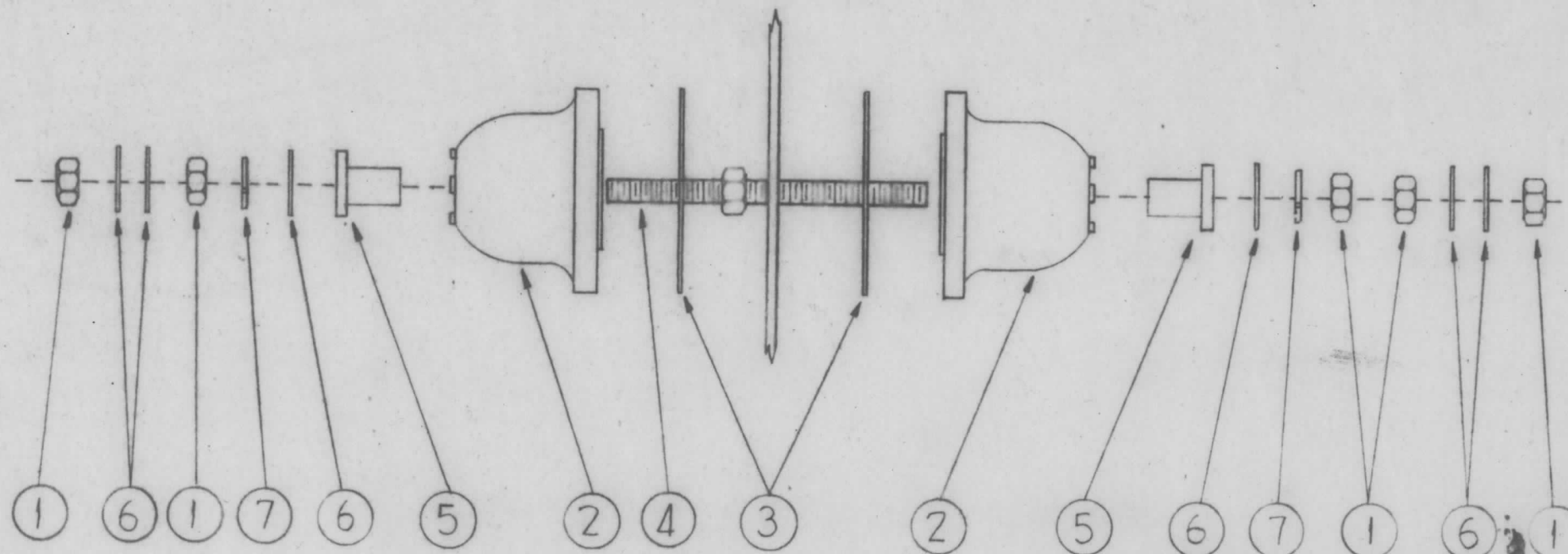


A-3017



5	7	LWS25MRN	Washer, Lock	
24	6	FW25MSS	Washer, Flat	
4	5	RY-112	Gland, Modified	
2	4	A-100	Stud Ass'y.	
4	3	GA-126	Gasket	
4	2	NS-115	Cap, Insulator	
14	1	NTH2520BNI4	Nut, Hex.	
REQ. ITEM	PART NO.		DESCRIPTION	SYMBOL
STOCK SIZE			THE TECHNICAL MATERIEL CORP. MAMARONECK, NEW YORK	
MATERIAL			AX-260, ASSEMBLY Insulator, FEEDTHRU	
TYPE & TEMPER		HEAT TREAT. SPEC.	DRAWN	CHECKER
FINISH & SPEC. NO.		ELEC. DES. APP.	MECH. DES. APP.	A-3017

SYM	DESCRIPTION	DATE	CH. NO.	DRAFTS	CHECKER	ENG. APP.
UNLESS OTHERWISE SPECIFIED:		SCALE				
DIMENSIONS ARE IN INCHES		MAXIMUM ALLOWABLE TOLERANCES HAVE BEEN DETERMINED AND ANY DEVIATIONS WILL BE CAUSE FOR REJECTION. REMOVE ALL BURRS AND SHARP EDGES				
TOLERANCES ON FRACTIONS $\pm 1/64$ DECIMALS $\pm .005$ ANGLES $\pm 1/2^\circ$						

2	TRC-3500	A-1203	6-6-61
REQ. PER UNIT	MODEL	SECTION	ASS'Y. NO.
USED ON			