

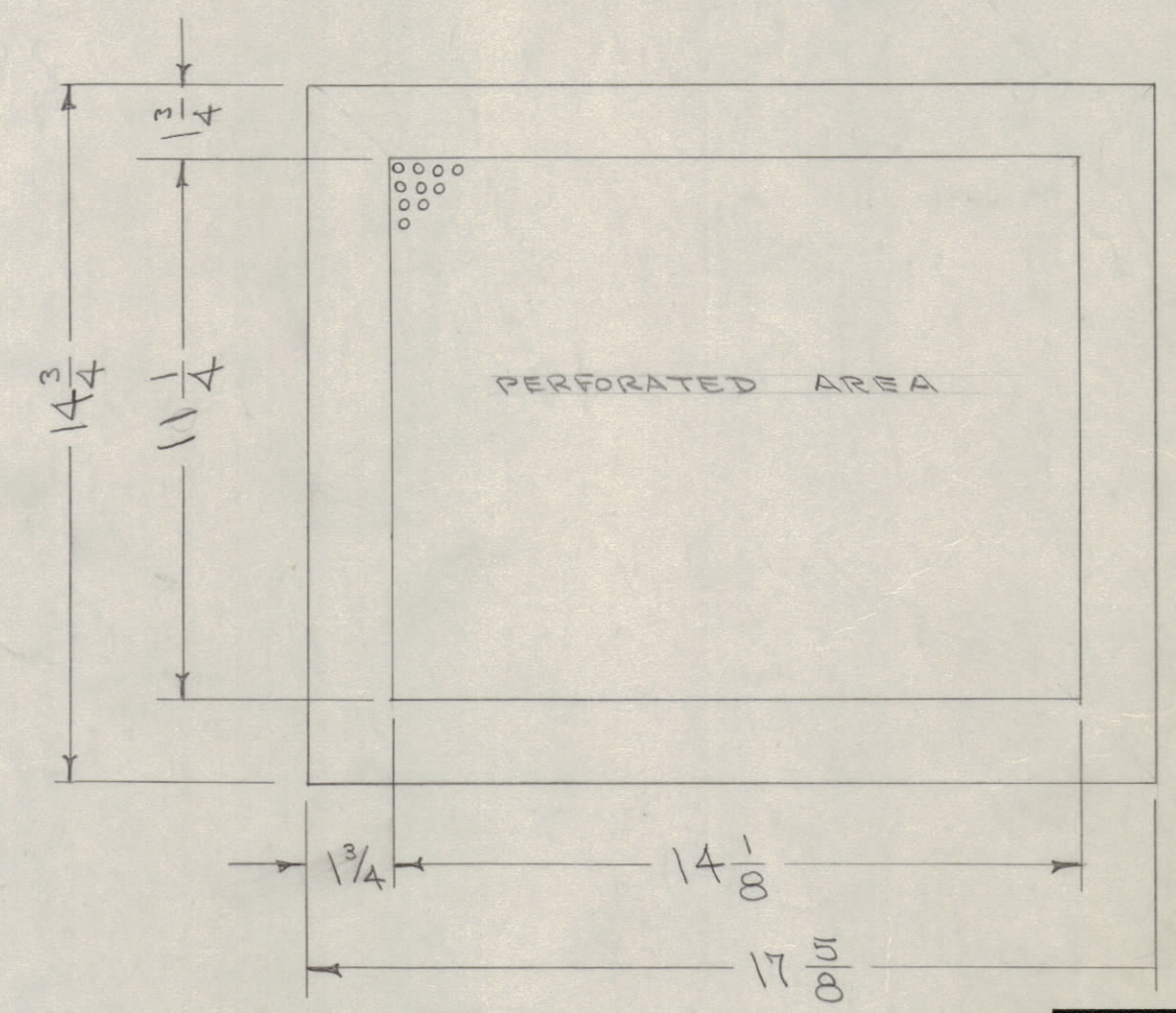
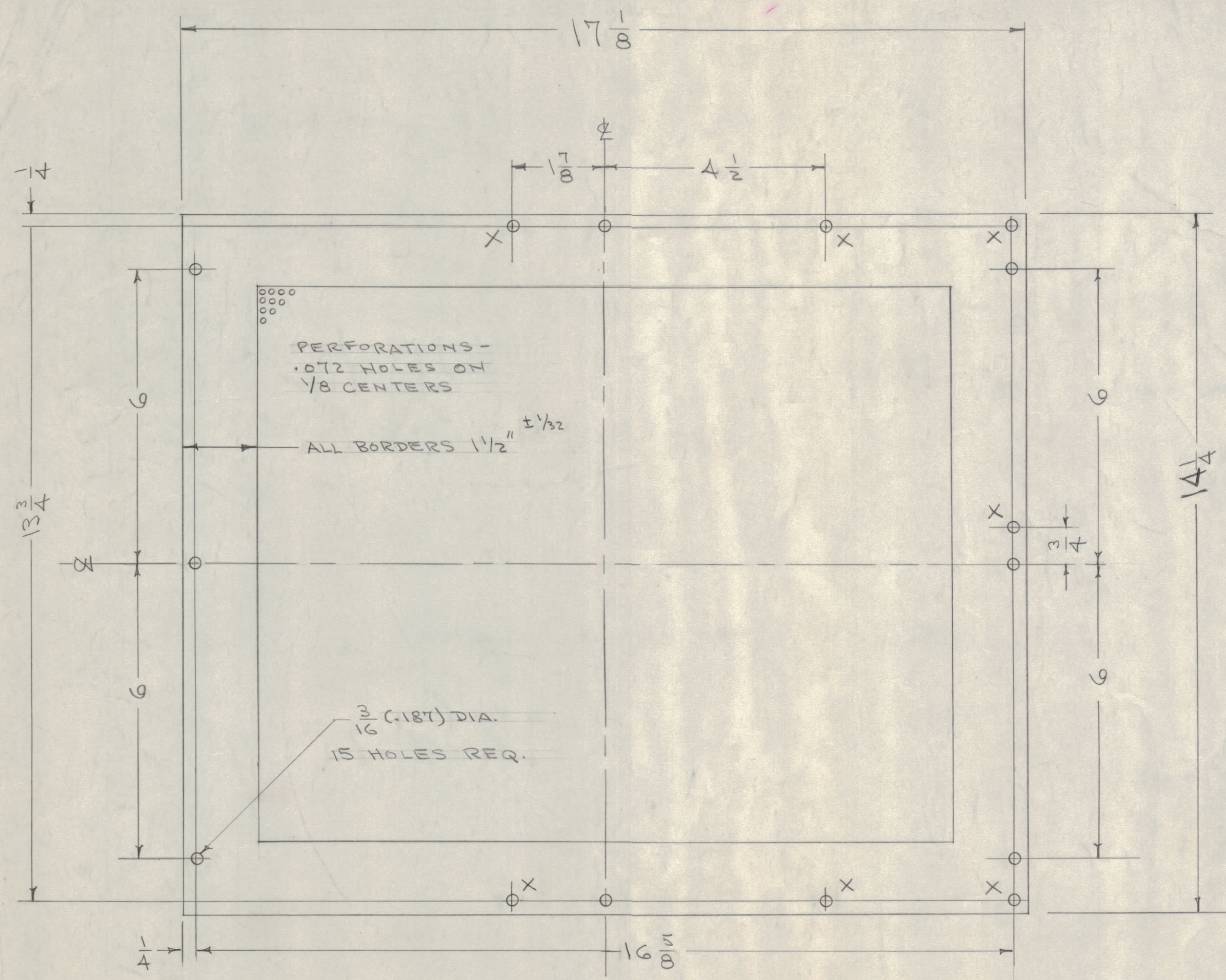
IF IT IS FOUND DESIRABLE TO CHANGE ANY TOLERANCE OR OTHER DETAIL SPECIFIED ON THIS DRAWING NOTIFY THE PURCHASER PROMPTLY.

MAXIMUM ALLOWABLE TOLERANCES HAVE BEEN DETERMINED AND DEVIATIONS WILL BE CAUSE FOR REJECTION. REMOVE ALL BURRS AND SHARP EDGES

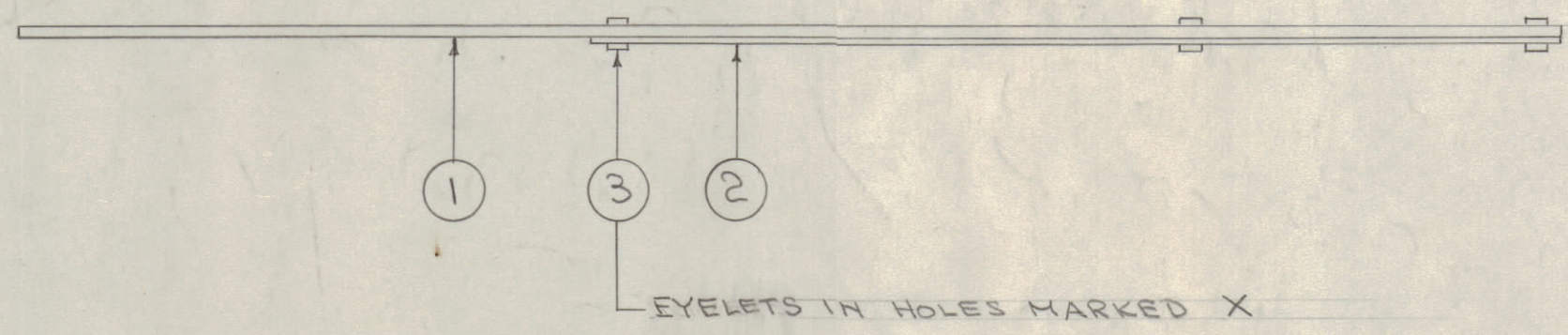
NOTICE TO PERSONS RECEIVING THIS DRAWING

THE TECHNICAL MATERIEL CORPORATION claims proprietary right in the material disclosed hereon. This drawing is issued in confidence for engineering information only and may not be reproduced or used to manufacture anything shown hereon without permission from THE TECHNICAL MATERIEL CORPORATION to the user. This drawing is loaned for mutual assistance and is subject to recall at any time.

Property of:
THE TECHNICAL MATERIEL CORPORATION
MAMARONECK, NEW YORK



A-393 B



ISSUE	ITEM	CHANGED FROM	DATE	CN. NO.	DRAFTS	CHECKER	ENG. APP.
B	1	S404-IRIDITE WAS SIDI-CAUSTIC DIP	12-8 59	1001	P		EMN
A	1	BLANK LAYOUT ADDED	8/30/55	1	CAD	HAR	WJY

TOLERANCES: DEC. DIM. ±, FRAC. DIM. ± Y64, ANGULAR DIM. ±

SCALE: DRILL, PUNCH, COMMERCIAL STOCK SIZES AND MANUFACTURERS TOLERANCES ARE NOT INCLUDED.

7	3	EY-100-3	EYELET	
1	2	IM-108	INSULATION	
1	1	MS-266	COVER (NO DRAWING)	
REQ. ITEM	PART NO.	DESCRIPTION		SYMBOL
.051		THE TECHNICAL MATERIEL CORP.		
STOCK SIZE		MAMARONECK, NEW YORK		
ALUMINUM #		COVER, BOTTOM		
MATERIAL		CFA.		
525 H32 PERFORATED		CFA.		
TYPE & TEMPER		DRAWN		
#		ELEC. DES. APP.		
HEAT TREAT. SPEC.		MECH. DES. APP.		
		CHECKED		
		FINAL APPROVAL		
S404-YEL-IRIDITE		A-393 B		
FINISH & SPEC. NO.				

1	CFA			8-30-55
REQ PER UNIT	MODEL	PROJECT NO.	ASS'Y. NO.	DATE
USED ON				