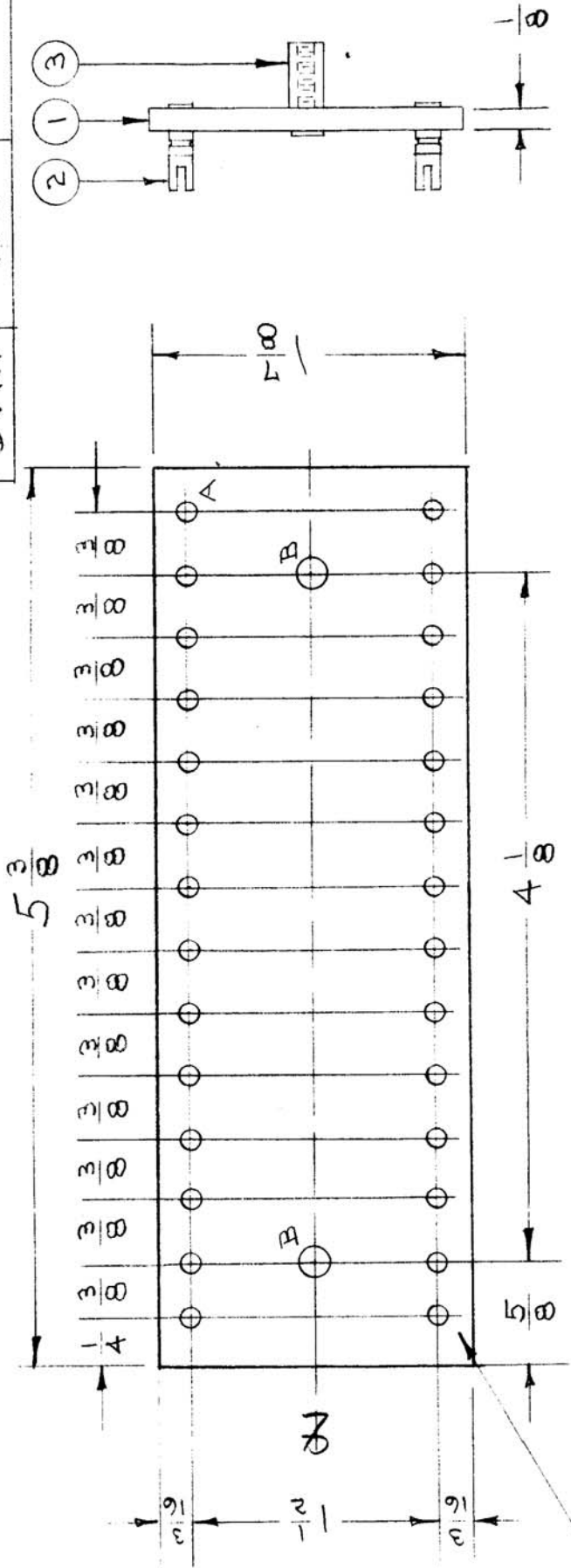


IF IT IS FOUND DESIRABLE TO CHANGE ANY TOLERANCE OR OTHER DETAIL SPECIFIED ON THIS DRAWING NOTIFY THE PURCHASER PROMPTLY.		A-379		D	
MAXIMUM ALLOWABLE TOLERANCES HAVE BEEN DETERMINED AND DEVIATIONS WILL BE CAUSE FOR REJECTION. REMOVE ALL BURRS AND SHARP EDGES		USED ON			
MODEL	PROJECT NO.	ASSY. NO.	DATE		
DVM	199		6-5-53		



TERMINALS ON THIS SIDE

A- NO. 32 (.116) DRILL 28 HOLES REQ.

B- NO. 12 (.189) DRILL 2 HOLES REQ.

REQ. ITEM	PART NO.	DESCRIPTION	SYMBOL
2	3 TE-108-13	STAND OFF, RIVET TYPE.	
28	2 TE-109-3	TERMINAL, TURRET	
1	1 PX-136	BOARD, TERM. (DRAWING)	
1/8 (.125)		STOCK SIZE	
PHENOLIC		MATERIAL	
XXXP LAMINATE		MATERIAL	
TYPE & TEMPER			
HEAT TREAT. SPEC.			
FINISH & SPEC. NO.			

THE TECHNICAL MATERIEL CORP.	MAMARONECK, NEW YORK
TERMINAL BOARD NO. 5	
ASSEMBLY	
C.D.D. 6-5-53	
DRAWN	ELEC. DES. APP.
CHECKED	MECH. DES. APP.
FINAL APPROVAL	
A-379	
B	