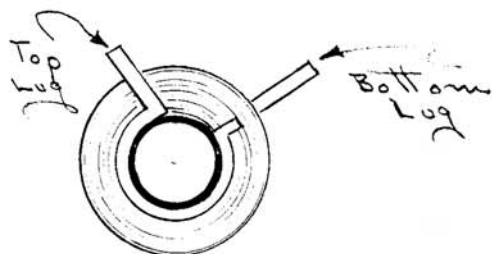
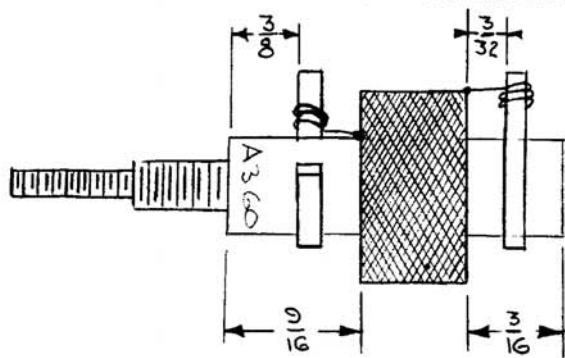


A - 360

ISSUE	ITEM	CHANGED FROM	DATE	CV. NO.	DRAFT	CHECKER	ENG. APP.
A	1	L(Min) ADDED	9/30/53	1	16	J.A.S.	P.T.J.
B	2	CF-104-3	12/17/53	2	J.A.S.	G.T.O.	G.T.O.
C	3	± 5% ADDED	1-12-56	3	J.A.S.	A.J.J.	A.J.J.



Coil form CTC Type LS3L (TMC PART. NO. CF-104-2N) (RED SLUG)  
 Coils - L1, L3, L4, L5

Winding Data:

Gears { Driver - 43  
 Cam - 88

L(Min) = 5.25 D = 63 F = 250 KC

Cam Width .375

Wire 5/41 Litz WF-104-3

Winding - 550 Turns

Inductance - 3 MH ± 5%

Notes:

1. Top Turn (550<sup>th</sup>) Held in Place By a Spot of Jopout Cement.
2. Solder End of Leads To Coil Lugs As Shown.
3. Paint Coil With Insulx-U-85 & Bake 1 Hour at 100°C.

Required: 4 Per Unit

SUPERCEDES AEM 015

DATE 7-6-51	TRANSFORMER COILS 100 KC IF Model DVM	THE TECHNICAL MATERIEL CORPORATION MAMARONECK, NEW YORK	
DRN. J.A.S.			
CHKD. G.T.O.			
APPD. J.A.S.			
SHEET		OF	NO. A-360