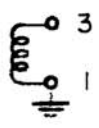
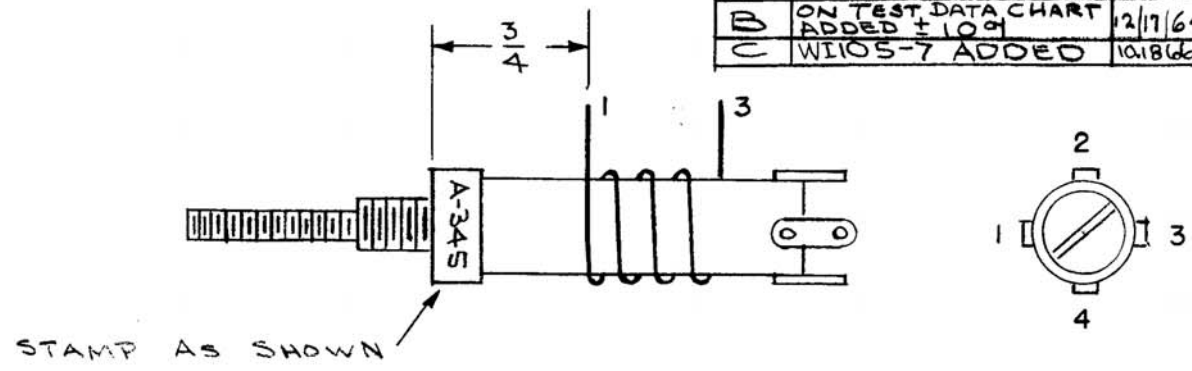


A-345-C

SYM	DESCRIPTION	DATE	APP
A	STAMPING ADDED	6/3/54	
B	ON TEST DATA CHART ADDED $\pm 10\%$	12/17/64	HL
C	WI105-7 ADDED	10/18/66	40/85



WINDING 1-3, 35 TURNS OF #24 DSC (WI107-5)

NOTES

1. ALL WINDINGS ARE SINGLE LAYER TIGHT WOUND SOLENOIDS.
2. USE SPOTTING CEMENT WHERE NECESSARY.
3. BAKE COIL OUT FOR 30 MINUTES AT 100 C.
4. PAINT COIL WITH INSULX-U-85 AND BAKE 1 HOUR AT 100° C.

Coil form - CTC - LSA Form with
 #200 G3K (Med. Freq.) Slug.
 TMC Part of-106-1

NOTE
 USED ON Assy A-753

Test Data Q-Meter

Wind	Freq MC	slug Pos.	$\pm 10\%$ Ind. Micro Henrie	Cap mmf	Q
1-3	7.9	Min L	7.4	55	145
1-3	7.9	Max L	12.1	34	100

* Min L is when slug is as close to the mounting base as possible.

SUPERCEDE AEM014

DATE 6-18-51	TUNING SECTION OF T6	THE TECHNICAL MATERIEL CORPORATION MAMARONECK, NEW YORK	
DRN. JAW			
CHKD. Jg			
APPD. Jg			
MODEL XFK	SHEET	OF	NO. A-345C

A-345-C