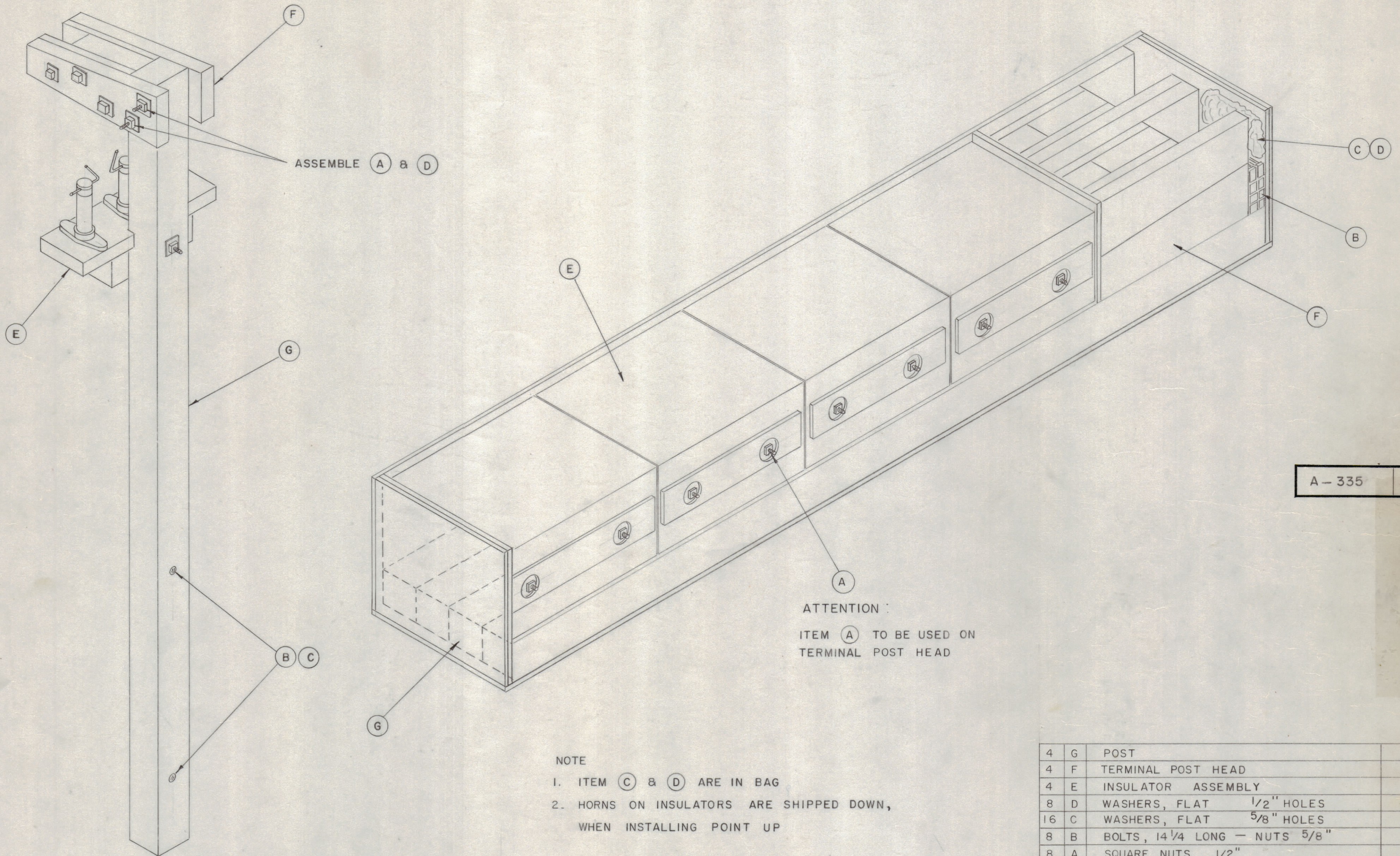


IF IT IS FOUND DESIRABLE TO CHANGE ANY TOLERANCE OR OTHER DETAIL SPECIFIED ON THIS DRAWING NOTIFY THE PURCHASER PROMPTLY.
 MAXIMUM ALLOWABLE TOLERANCES HAVE BEEN DETERMINED AND DEVIATIONS WILL BE CAUSE FOR REJECTION. REMOVE ALL BURRS AND SHARP EDGES



A - 335

ATTENTION :
 ITEM (A) TO BE USED ON
 TERMINAL POST HEAD

NOTE
 1. ITEM (C) & (D) ARE IN BAG
 2. HORNS ON INSULATORS ARE SHIPPED DOWN,
 WHEN INSTALLING POINT UP

4	G	POST	
4	F	TERMINAL POST HEAD	
4	E	INSULATOR ASSEMBLY	
8	D	WASHERS, FLAT 1/2" HOLES	
16	C	WASHERS, FLAT 5/8" HOLES	
8	B	BOLTS, 14 1/4 LONG - NUTS 5/8"	
8	A	SQUARE, NUTS 1/2"	

REQ. ITEM	PART NO.	DESCRIPTION	SYMBOL
		THE TECHNICAL MATERIEL CORP.	
		MAMARONECK. NEW YORK	
		TERMINAL POST	
		SHIPPING ASSEMBLY	
		DATE 1-27-53	
		DRAWN	ELEC. DES. APP. MECH. DES. APP.
		CHECKED	FINAL APPROVAL
			A - 335

ISSUE	ITEM	CHANGED FROM	DATE	CN. NO.	DRAFTS	CHECKER	ENG. APP.
TOLERANCES		SCALE: //					
ALL OTHERS	DEC. DIM. ± FRAC. DIM. ± ANGULAR DIM. ±	DRILL, PUNCH, COMMERCIAL STOCK SIZES AND MANUFACTURERS TOLERANCES ARE NOT INCLUDED.					

MODEL	PROJECT NO.	ASS'Y. NO.	DATE
USED ON			