

IF IT IS FOUND DESIRABLE TO CHANGE ANY TOLERANCE OR OTHER DETAIL SPECIFIED ON THIS DRAWING NOTIFY THE PURCHASER PROMPTLY.

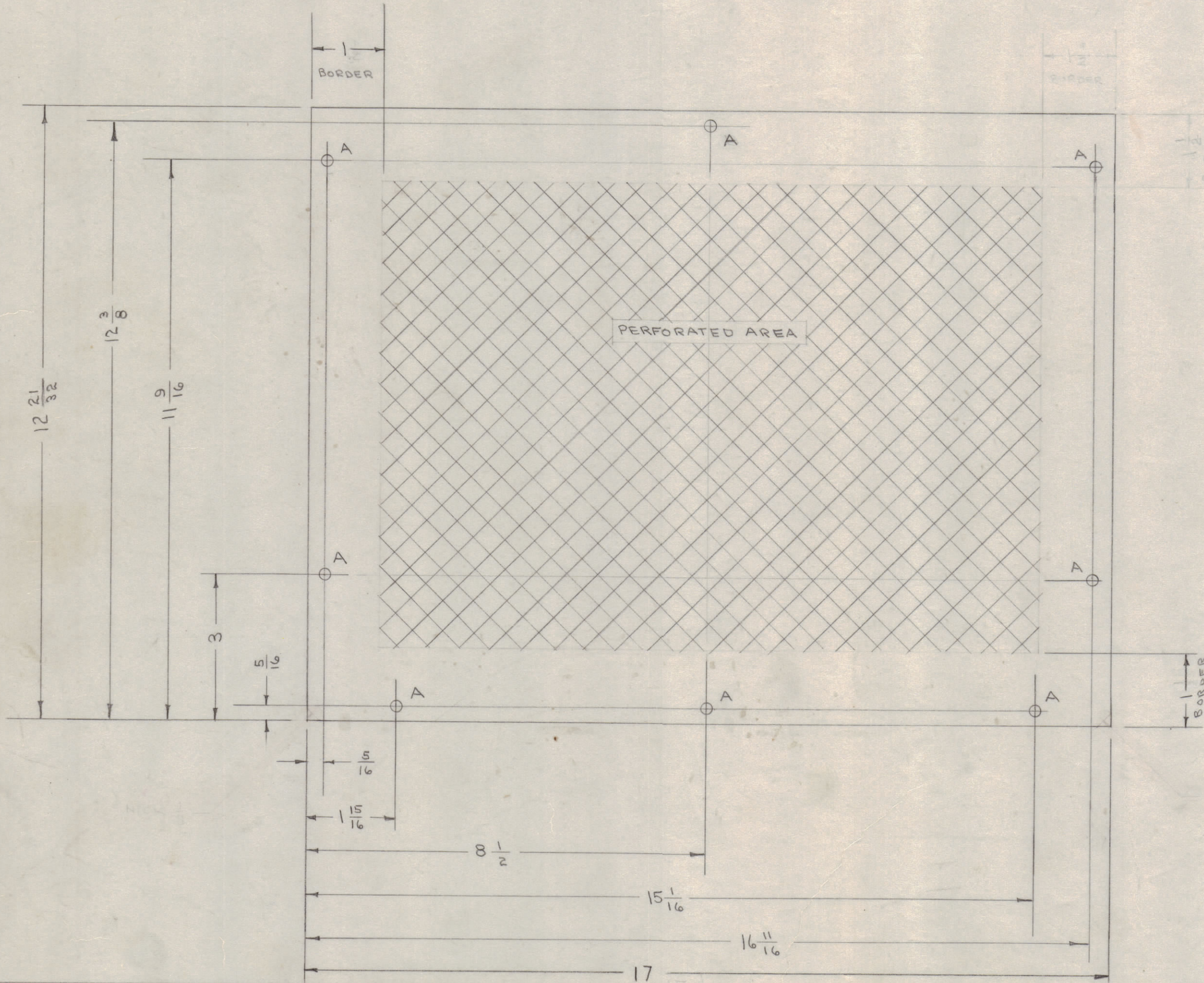
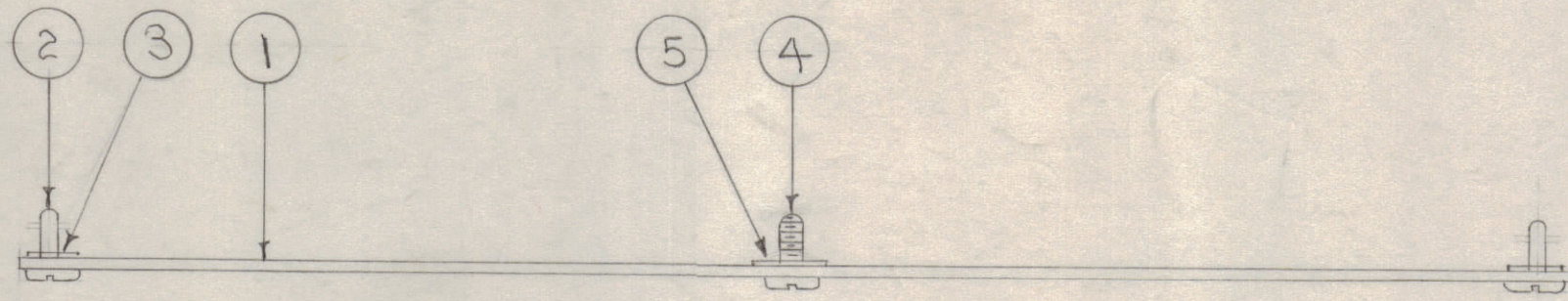
MAXIMUM ALLOWABLE TOLERANCES HAVE BEEN DETERMINED AND DEVIATIONS WILL BE CAUSE FOR REJECTION. REMOVE ALL BURRS AND SHARP EDGES

RELEASED

NOTICE TO PERSONS RECEIVING THIS DRAWING

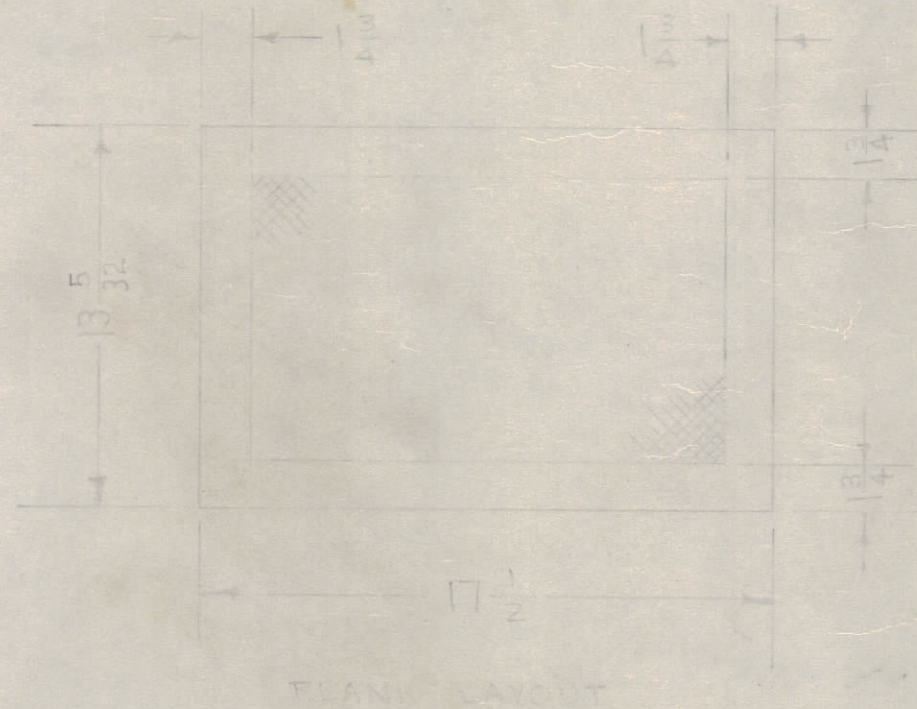
THE TECHNICAL MATERIEL CORPORATION claims proprietary right in the material disclosed hereon. This drawing is issued in confidence for engineering information only and may not be reproduced or used to manufacture anything shown hereon without permission from THE TECHNICAL MATERIEL CORPORATION to the user. This drawing is loaned for mutual assistance and is subject to recall at any time.

Property of:  
THE TECHNICAL MATERIEL CORPORATION  
MAMARONECK, NEW YORK



A = 1/4 (.250) D. 8 HOLES REQUIRED

NOTE  
1. MATERIAL .051 THICK 5052-O PERFORATED ALUMINUM. .072 DIA. HOLES ON 1/8 CENTERS.  
2. ATTACHE HARDWARE AS PER DRAWING.



A-317 D

REF: MS-1283

REQ. ITEM	PART NO.	DESCRIPTION	SYMBOL
1	5	WA-168	RING, RETAINING
1	4	SC-112	SCREW, CAPTIVE
7	3	FS-109-3	RING, RETAINING
7	2	FS-110-1	STUD
1	1	MS-183	COVER, TOP & BOTTOM (DRAWING)

THE TECHNICAL MATERIEL CORP.		MAMARONECK, NEW YORK	
.051		STOCK SIZE	
ALUMINUM		COVER ASSEMBLY	
5052-H32		TOP AND BOTTOM	
TYPE & TEMPER		C.D.D. 12-11-52	
HEAT TREAT. SPEC.		DRAWN	
FINISH & SPEC. NO.		ELEC. DES. APP.	
S404 YEL IRIDITE		MECH. DES. APP.	
		CHECKED	
		FINAL APPROVAL	
		A-317 D	

ISSUE	ITEM	CHANGED FROM	DATE	CN. NO.	DRAFTS	CHECKER	ENG. APP.
C	1	DELETED "BLANK LAYOUT" ADDED Top & Bottom & TB	4/12/52	3			
B	1	ITEM 3 WAS FN-105 ITEM 2 WAS FS-105-S	1/10/52	2			
A	1	EMPOSSING DETAIL REMOVED BLANK LAYOUT ADDED	1/11/53	1			

D	1	S404 IRIDITE WAS S/DI-CAUSTIC D IP	12-8-52	1001		EMN
---	---	------------------------------------	---------	------	--	-----

2	FFR	104	A-122	12-12-52
REQ. PER UNIT	MODEL	PROJECT NO.	ASSY. NO.	DATE
USED ON				

TOLERANCES		SCALE:
ALL OTHERS	DEC. DIM. ± 1/64 FRAC. DIM. ± 1/64 ANGULAR DIM. ±	DRILL PUNCH, COMMERCIAL STOCK SIZES AND MANUFACTURERS TOLERANCES ARE NOT INCLUDED.