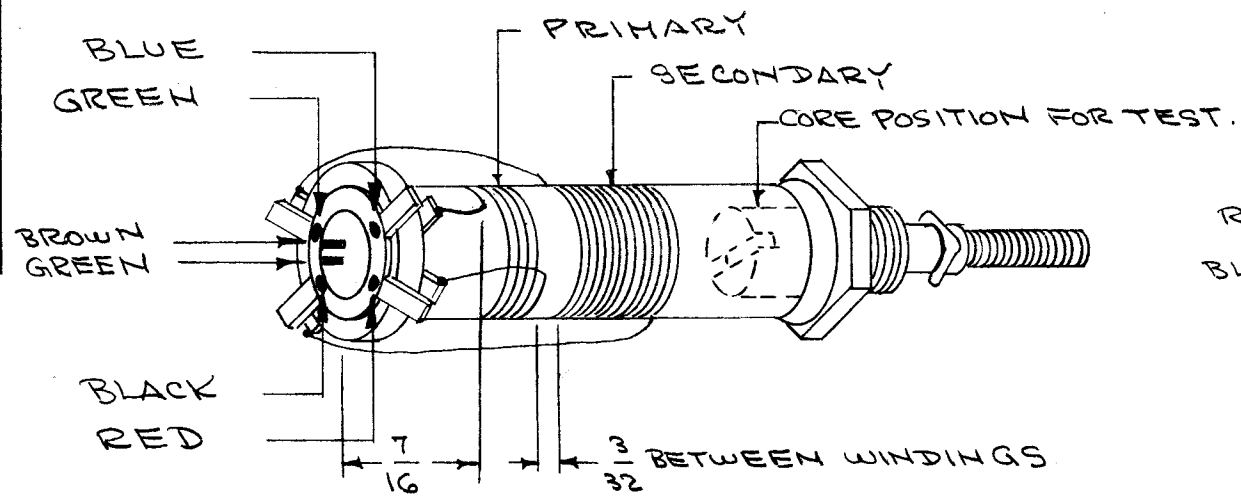


A-306

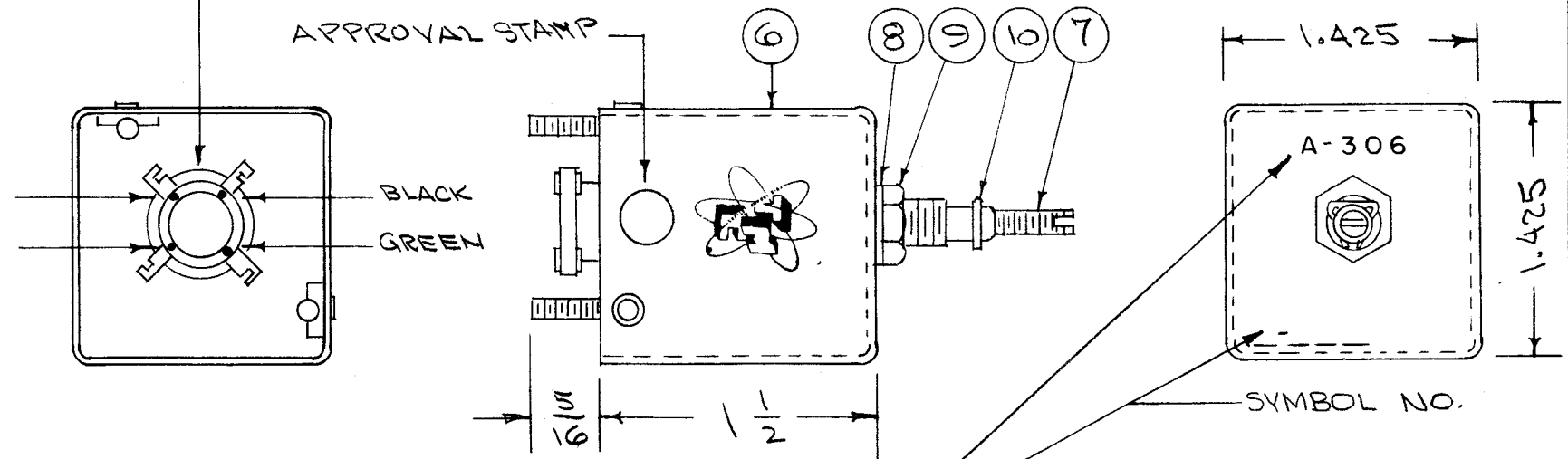
CEMENT ITEM 5 (COLLAR) TO COIL FORM WITH ITEM 3. COLOR CODE END OF COIL FORM AS BELOW.



RED
BLUE

POSITION LUGS AS SHOWN RELATIVE TO CAN.

STAMP TMC INSIGNIA ON SIDE OF CAN.



STAMP ASS'Y. NO. & SYMBOL NO. ON CAN AFTER CAN IS ASSEMBLED ON CHASSIS. (REF: LD-24)

WINDING DATA

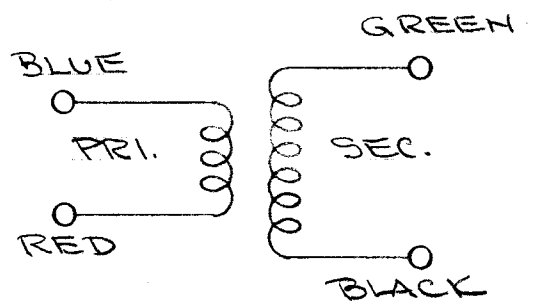
- 1- PRIMARY - STARTING AT BLUE LUG, CLOSE WIND $A^{3/4}$ TURNS OF ITEM 2 ENDING AT RED LUG.
- 2- SECONDARY - STARTING AT GREEN LUG, CLOSE WIND $12^{1/4}$ TURNS OF ITEM 2 ENDING AT BLACK LUG.
- 3- STAKE ENDS WITH ITEM 3.
- 4- BAKE FOR 1/2 HOUR AT 215° F.
- 5- SATURATE COILS WITH ITEM 4. (Q MAX)
- 6- BAKE FOR 1/2 HOUR AT 215° F.
- 7- REPEAT STEPS 5 AND 6.
- 8- STRIP, TIN AND SOLDER CONNECT LEADS AS ABOVE.

TEST DATA (SEE ABOVE FOR CORE POSITION)

TEST LEADS TO BE APPROX. 1/4". NO CAN NEEDED FOR TEST

	PRIMARY	SECONDARY
	BLUE/RED	GREEN/BLACK
L _{uh}	.53 (.46-.60)	2.1 (1.99-2.21)
Q	105 OR GREATER	105 OR GREATER
F	25 MC	7.9 MC

USE BOONTON Q METER 160 A OR EQUIV.



FREQ. RANGE 7.9 - 16.4 MC

X	11	BS-100	SOLDER, SOFT
	10	SP-102	SPRING LOCK P/O CF-114
	9	NT-102	NUT, HEX P/O CF-114
	8	LWI 25 LRC	WASHER, LOCK P/O CF-114
	7	CI-109-19	CORE
	6	A-173	CAN ASSY.
	5	TE-146-4	COLLAR & LUGS
X	4	GL-102	Q MAX
X	3	GL-103	CEMENT, DUCO
X	2	WI-107-7	WIRE, MAGNET # 26 DSC
	1	CF-114-3	COIL FORM

REQ. ITEM	PART NO.	DESCRIPTION	SYMBOL
THE TECHNICAL MATERIEL CORP. MAMARONECK, NEW YORK			
STOCK SIZE			
TRANSFORMER ASSY.			
MATERIAL			
ANTENNA, T100, BAND 7			
			A.S.S.
			A-306
			A

DEC. DIM. ±	MAXIMUM ALLOWABLE TOLERANCES HAVE BEEN DETERMINED AND ANY DEVIATIONS WILL BE CAUSE FOR REJECTION.
FRAC. DIM. ±	REMOVE ALL BURRS AND SHARP EDGES
ANGULAR DIM. ±	

1	FFRD-7	104	A-328	9-26-56
REQ. PER UNIT	MODEL	PROJECT NO.	ASS'Y. NO.	DATE
USED ON				