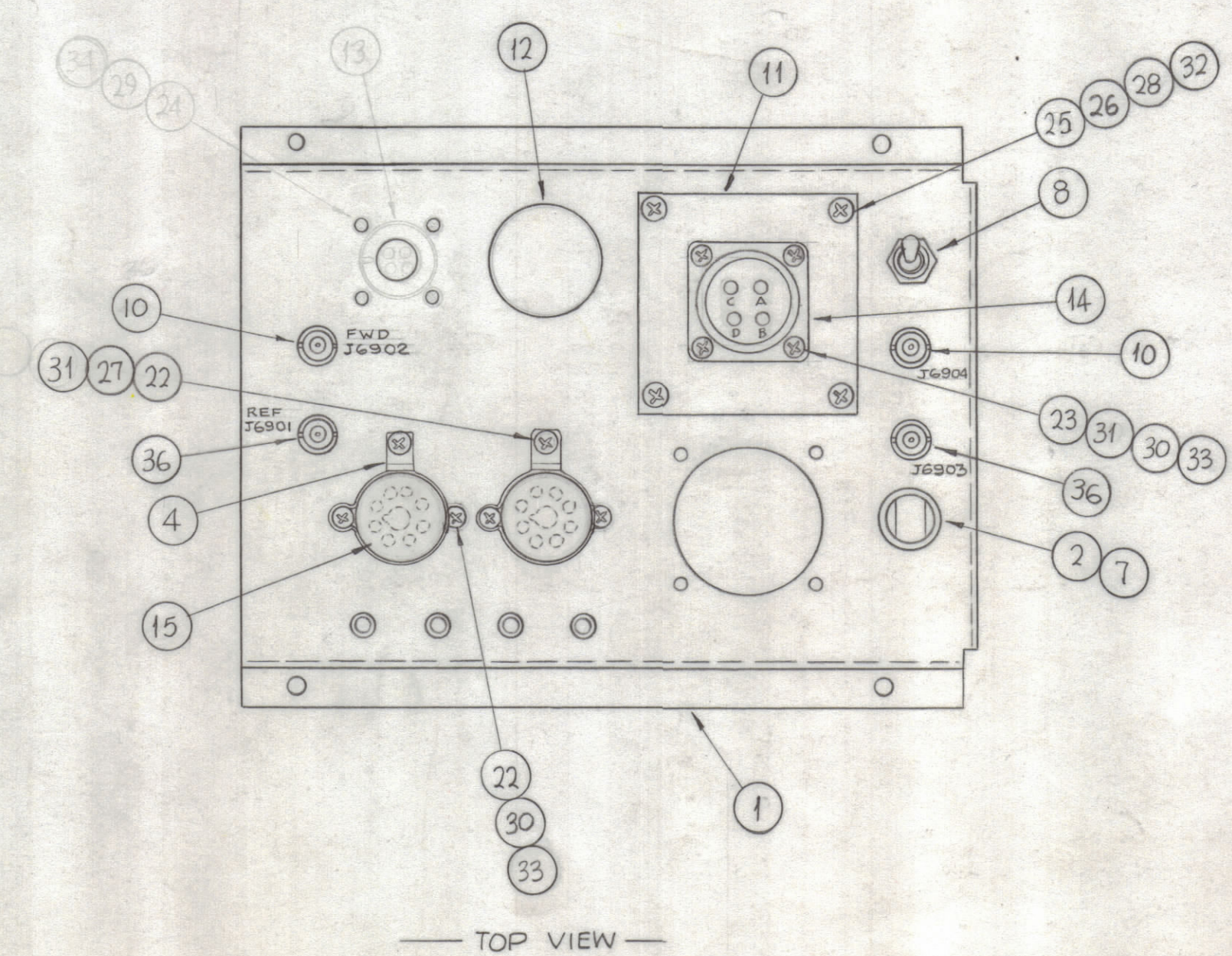
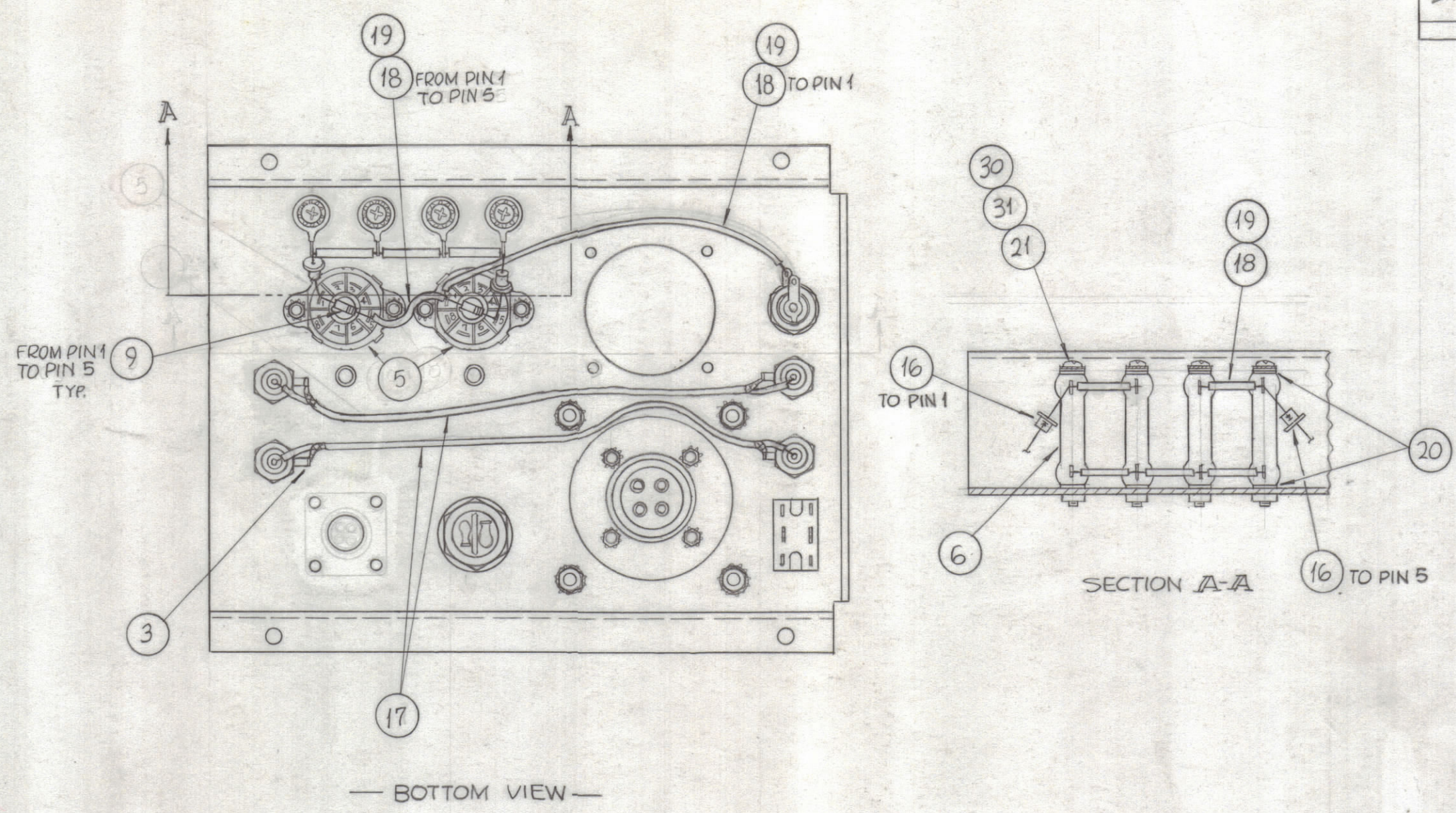


REVISIONS						
ZONE	SYM	DESCRIPTION	DATE	E.M.N. NO.	DRAFT	CHKD APPD
	O	ORIGINAL RELEASE FOR PRODUCTION	5/27/64	0	A.M	
	A	IT. 13, 24, 29 & 34 DELE. PICTORIAL UPDATED	7.8.64	11759	NB	
	A	IT. 36 WAS UG1104 A/U; 10 WAS UG625 B/U				
	A	IT. 12 WAS CP41BIEF405 K; 2 WAS FH104-4				
	B	ITEM 3 WAS TE III-4	9-18-64	12371	SRG	



REQ'D.	ITEM	PART NUMBER	DESCRIPTION	SYMBOL
2	36	UG-1104 */U	RECEPTACLE, BNC	
X	35	BS-100	SOLDER, SOFT	
#	34	DELETED		
8	33	NTH0632BN8	NUT, HEX	
4	32	NTH0832BN10	NUT, HEX	
10	31	FW06HBN	WASHER, FLAT	
12	30	LWE06MRN	LOCKWASHER, EXTERNAL TOOTH	
#	29	DELETED		
4	28	LWE08MRN	LOCKWASHER, EXTERNAL TOOTH	
2	27	LW506MRN	LOCKWASHER, SPRING TYPE	
4	26	FW08HBN	WASHER, FLAT	
4	25	SCBP0832BN9	SCREW, MACHINE	
#	24	DELETED		
4	23	SCBP0632BN9	SCREW, MACHINE	
6	22	SCBB0632BN5	SCREW, MACHINE	
4	21	SCBP0632BN34	SCREW, MACHINE	
8	20	WA-102-2	WASHER, FIBER	
13"	19	PX-100-1-053	INSULATION SLEEVING, ELECTRICAL	
14"	18	WL-100-4	WIRE, BUSS-BAR TINNED	
18 1/2"	17	RG-174 /U	CABLE, COAXIAL	
2	16	1N547	SEMI CONDUCTOR, DEVISE, DIODE	
2	15	CE51C800R	CAPACITOR, FIXED ELECTROLYTIC	
1	14	MS3102A22-10S	CONNECTOR, RECEPTACLE	
#	13	DELETED		
1	12	CP41BIEF405K	CAPACITOR, FIXED	
1	11	PX-779	BOARD, CONNECTOR MTG.	
2	10	UG-625 */U	RECEPTACLE BNC	
2	9	RC20GF104K	RESISTOR-FIXED COMPOSITION	
1	8	ST22N	SWITCH, TOGGLE	
1	7	FU-102-5	FUSE, CARTRIDGE, SLOW BLOWING	
4	6	RW109-45	RESISTOR, FIXED, W.W.	
2	5	TS101P01	SOCKET, ELECTRON TUBE	
2	4	CU-118-2-5	CLAMP, TUBE	
4	3	TE-111-3	LUG, SOLDER	
1	2	FH-104-3	HOLDER, FUSE, LAMP, INDICATING	
1	1	LD-1253 /MS-3275	CHASSIS CONNECTOR MTG.	

F. BUDETTI LIST OF MATERIAL				
MATERIAL	THE TECHNICAL MATERIEL CORP. MAMARONECK, NEW YORK			
FINISH	TITLE CONTROL CHASSIS, ASS'Y			
1	GPT-200K	AX-397	DATE	DATE
SCALE	MODEL USED ON	ASS'Y. NO.	FINAL APPROVAL	DATE
1/2" = 1"	CODE	A	SRG	3-13-64
UNLESS OTHERWISE SPECIFIED DIMENSIONS ARE IN INCHES AND INCLUDE CHEMICALLY APPLIED OR PLATED FINISHES			CHECKED	aa
DECIMALS .X ± .05 .XX ± .01 .XXX ± .005			ELECT. DES.	208
FRACTIONS ± 1/64 ANGLES ± 0° 30'			MECH. DES.	ae
TOLERANCES			DATE	9/29/64
			SHEET	A-2761
			REV. LTR.	B

NOTES

THE CONTENTS OF THIS DRAWING ARE THE EXCLUSIVE PROPERTY OF THE TECHNICAL MATERIEL CORP. ITS UNAUTHORIZED USE OR REPRODUCTION IN WHOLE OR IN PART IS STRICTLY FORBIDDEN.