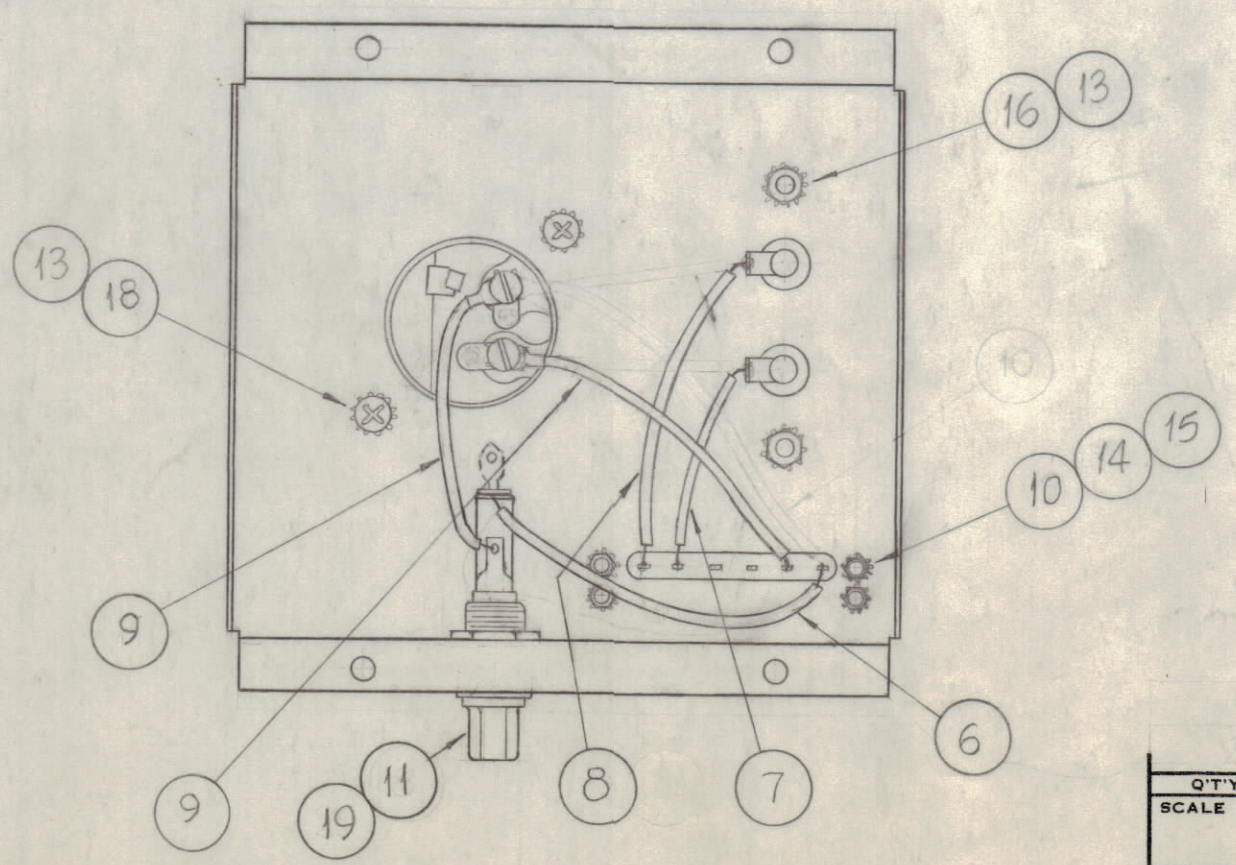
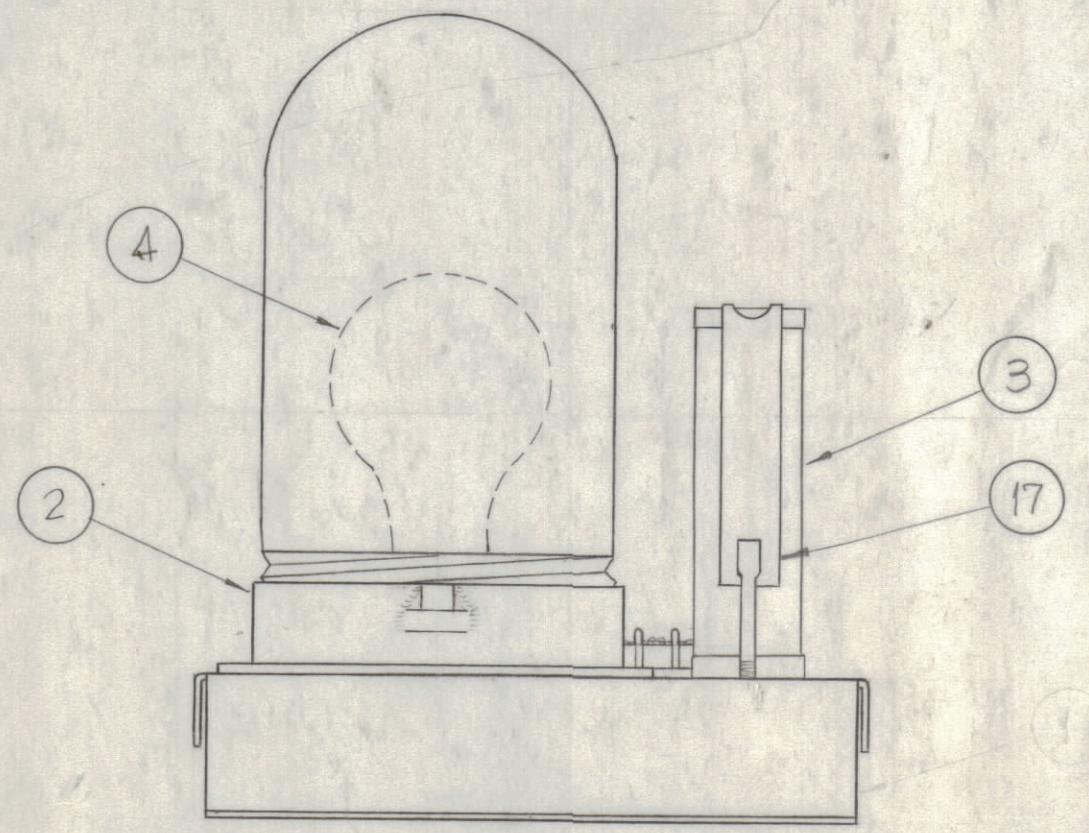
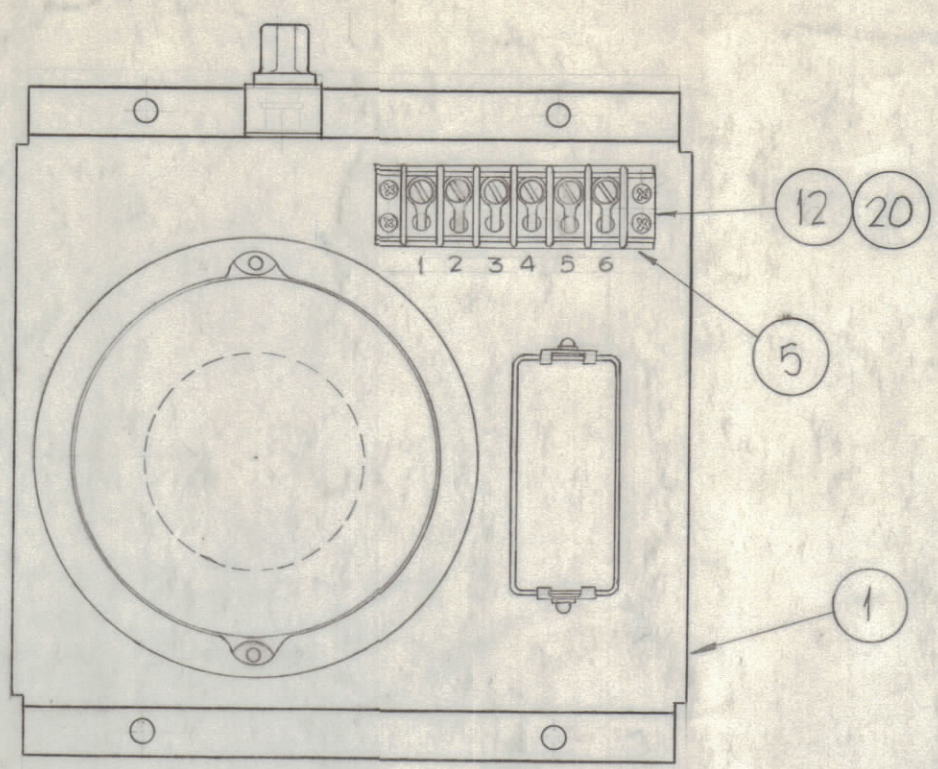


REVISIONS							
ZONE	SYM	DESCRIPTION	DATE	E.M.N. NO.	DRAFT	CHKD	APPD
	X3	ITEMS 19, 20, 21 ADDED	1-22-64				
	O	ORIGINAL RELEASE FOR PRODUCTION	5.18.64		LSB		
C2, D2	A	IT.9 WAS CA-409-126-4.50, IT.19 WAS FU-102-1	7.16.64	11763	LSB	SRG	SRG



TMC NO.	ITEM - 1	USED ON	QTY.
A-2704-1	LD-1229 (MS-3207)	AP-109	1
A-2704-2	LD-1230 (MS-3207)	AP-111	1

REQ'D.	ITEM	PART NUMBER	DESCRIPTION	SYMBOL
X	21	BS-100	SOLDER, SOFT	
	2	MS-154-1	PLATE, STRADDLE	
	1	FU-102-.5	FUSE CARTRIDGE	
	2	SCBP1032BN8	SCREW, MACHINE	
	2	CP-07SA5	SPADE BRACKET	
	2	NTH1032BN12	NUT, HEX	
	4	NTH0440BN6	NUT, HEX	
	4	LWE04MRN	LOCKWASHER, EXTERNAL	
	4	LWE10MRN	LOCKWASHER, EXTERNAL	
	1	TM-100-6	TERMINAL STRIP	
	1	FH-104-2	HOLDER, FUSE, LAMP INDICATING	
	4	SCBP0440BN8	SCREW, MACHINE	
	2	CA-409-142-4.50	CABLE ASS'Y JUMPER (H.V.)	
	4"	MWC 20(7)B2	CABLE, INSULATED (FIBERGLASS)	RED
	3"	MWC 20(7)B1	CABLE, INSULATED (FIBERGLASS)	BROWN
	4-1/2"	MWC 20(7)B9	CABLE, INSULATED (FIBERGLASS)	WHITE
	1	PX-544-6	INSULATOR, TERMINAL	
	1	BI-106-1	BULB, ELECTRICAL	
	1	CP-114-1	CAPACITOR, MOTOR-RUN/BALLAST	
	1	TS-163	SOCKET, LAMP W/LENS	
	1	SEE CHART	CHASSIS, ELECT. MTG.	

F. BUDETTI LIST OF MATERIAL				
MATERIAL	THE TECHNICAL MATERIEL CORP. MAMARONECK, NEW YORK			
FINISH	TITLE HV LIGHT SUB ASS'Y			
UNLESS OTHERWISE SPECIFIED DIMENSIONS ARE IN INCHES AND INCLUDE CHEMICALLY APPLIED OR PLATED FINISHES	DRAWN SRG	DATE 3/27/64	FINAL APPROVAL SRG	DATE
DECIMALS .X ± .05 .XX ± .01 .XXX ± .005	CHECKED SRG	DATE 3/16/64	A-2704	A
TOLERANCES ANGLES ± 1/64 ± 0° 30'	ELECT. DES. LSB	DATE 3/16/64		
	MECH. DES. SRG	DATE 3/16/64		
		SHEET		REV. LTR.

NOTES

Q'TY./UNIT	MODEL USED ON	ASS'Y. NO.
SCALE	CODE	
THE CONTENTS OF THIS DRAWING ARE THE EXCLUSIVE PROPERTY OF THE TECHNICAL MATERIEL CORP. ITS UNAUTHORIZED USE OR REPRODUCTION IN WHOLE OR IN PART IS STRICTLY FORBIDDEN.		