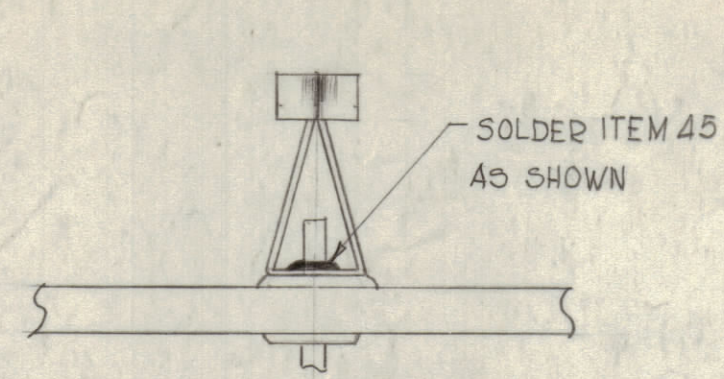


NOTICE TO PERSONS RECEIVING THIS DRAWING

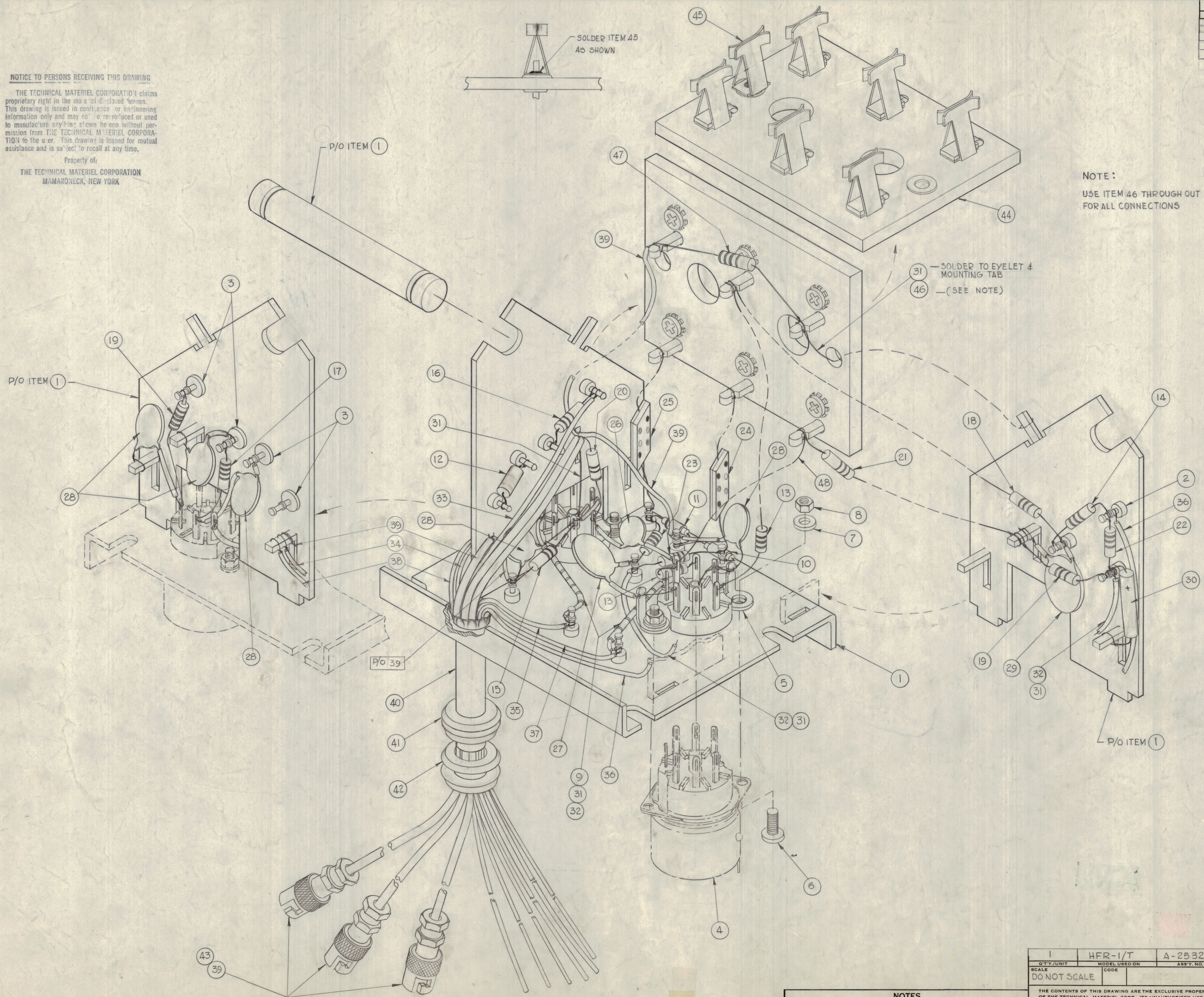
THE TECHNICAL MATERIEL CORPORATION claims proprietary right in the material disclosed herein. This drawing is issued in confidence or engineering information only and may not be reproduced or used to manufacture anything shown hereon without permission from THE TECHNICAL MATERIEL CORPORATION to the user. This drawing is loaned for mutual assistance and is subject to recall at any time.

Property of:
 THE TECHNICAL MATERIEL CORPORATION
 MAMARONECK, NEW YORK



		REVISIONS					
ZONE	BY	DESCRIPTION	DATE	E.M.N. NO.	DRAFT	CHKD	APPD
B2	A	ITEM (1) WAS CX-106-G; ITEM (10) WAS CX-106-11	1-27-63	8127			
B2	B	ITEM (3) WAS CI-120; SYMBOLS ADDED TO ITEM (4)	7/26/63	10569			
	B	DWG UP DATED & CLARIFIED	12/16/66	17419	WLD		
	C	IT B3 THRU B8 WEDE WI40B22N...	2-23-67	17B41	G.D.L.		
	D	BUILD UP REVISED & UPDATED					
	E						

NOTE:
 USE ITEM 46 THROUGH OUT FOR ALL CONNECTIONS



REQ'D.	ITEM	PART NUMBER	DESCRIPTION	SYMBOL
X	48	WL-100-4	WIRE, BUSS #16	
1	47	RC20GF470J	RESISTOR, FIXED COMPOSITION	R1047
X	46	B3-100	SOLDER, SOFT	
1	45	M3-2901	CONTACT, SWITCH	
1	44	A-2381-2	TERMINAL BOARD	
3	43	PL-204	CONNECTOR, PLUG, MINIATURE	P1001,2,3
1	42	EY-102-16	GROMMET, ELASTIC	
1	41	EY-102-4	GROMMET, ELASTIC	
X	40	PX-643-2	SLEEVING, SHRINK	
X	39	RG-188/U	WIRE, COAXIAL	
X	38	WI40B22N91	WIRE INSULATED	
X	37	98		
X	36	92		
X	35	01		
X	34	0		
X	33	WI40B22N2	WIRE INSULATED	
X	32	PX-104-3-034	INSULATION SLEEVING	
X	31	WL-100-6	WIRE, BUSS #20	
1	30	CE-107-1	CAPACITOR, ELECTROLYTIC	C1035
1	29	CC-100-24	CAPACITOR, FIXED, CERAMIC DISC.	C1055
5	28	CC-100-16	CAPACITOR, FIXED, CERAMIC DISC.	C1038,39,40,41,42
1	27	CM 112F202G55		MICA DIELECTRIC C1050
1	26	CM 111 F102 F55		MICA DIELECTRIC C1042
1	25	CM 15C220J03		MICA DIELECTRIC C1048
1	24	CM 15C100J03YY	CAPACITOR, FIXED, MICA DIELECTRIC	C1053
2	23	RC20GF125J	RESISTOR, FIXED COMPOSITION	R1044,45
1	22	154J		R1046
1	21	104J		R1040
1	20	473J		R1039
2	19	223J		R1036,43
1	18	103J		R1049
1	17	472J		R1037
1	16	122J		R1038
1	15	131J		R1035
1	14	101J		R1048
2	13	RC20GF100J	RESISTOR, FIXED COMPOSITION	R1041,42
1	12	CL-275-1R0	COIL, RF.	L1011
1	11	CX-106-12	CAPACITOR, VOLTAGE VARIABLE	C1049
1	10	CX-106-11	CAPACITOR, VOLTAGE VARIABLE	C1051
12	9	CI-120-1	CORE, TOROID, MINIMUM BEAD	
4	8	NTH0440BN6	NUT, HEX	
4	7	LWS04MRN	LOCKWASHER	
4	6	5CBP0440BN4	SCREW, MACHINE	
2	5	TE-149-.120	LUG, SOLDER	
2	4	TS-102PO1	SOCKET & SHIELD, 7 PIN MINIATURE	XV1006, XV1007
4	3	TE-193B459	TERMINAL, FEEDTHROUGH	
11	2	TE-192A3R9	TERMINAL, STUD	
1	1	A-2343	CHASSIS, OSC. ASSY	

REQ'D. ITEM		PART NUMBER		DESCRIPTION		SYMBOL	
ANGAR LIST OF MATERIAL							
MATERIAL				FINISH			
THE TECHNICAL MATERIEL CORP. MAMARONECK, NEW YORK				TITLE OSCILLATOR CHASSIS ASSY WIRING			
SCALE DO NOT SCALE		MODEL USED ON A-2532		DRAWN G.D.L.		DATE 7-20-62	
UNLESS OTHERWISE SPECIFIED DIMENSIONS ARE IN INCHES AND INCLUDE CHEMICALLY APPLIED OR PLATED FINISHES				CHECKED ANGAR		DATE 7/20/62	
THE CONTENTS OF THIS DRAWING ARE THE EXCLUSIVE PROPERTY OF THE TECHNICAL MATERIEL CORP. ITS UNAUTHORIZED USE OR REPRODUCTION IN WHOLE OR IN PART IS STRICTLY FORBIDDEN.				ELECT. DES. ANGAR		DATE 7/20/62	
DECIMALS X ± .05 XX ± .01 XXX ± .005		FRACTIONS 1/64 ANGLES ± 0° 30'		MECH. DES.		DATE	
NOTES				A-2521		D	
				SHEET		REV. LTR.	