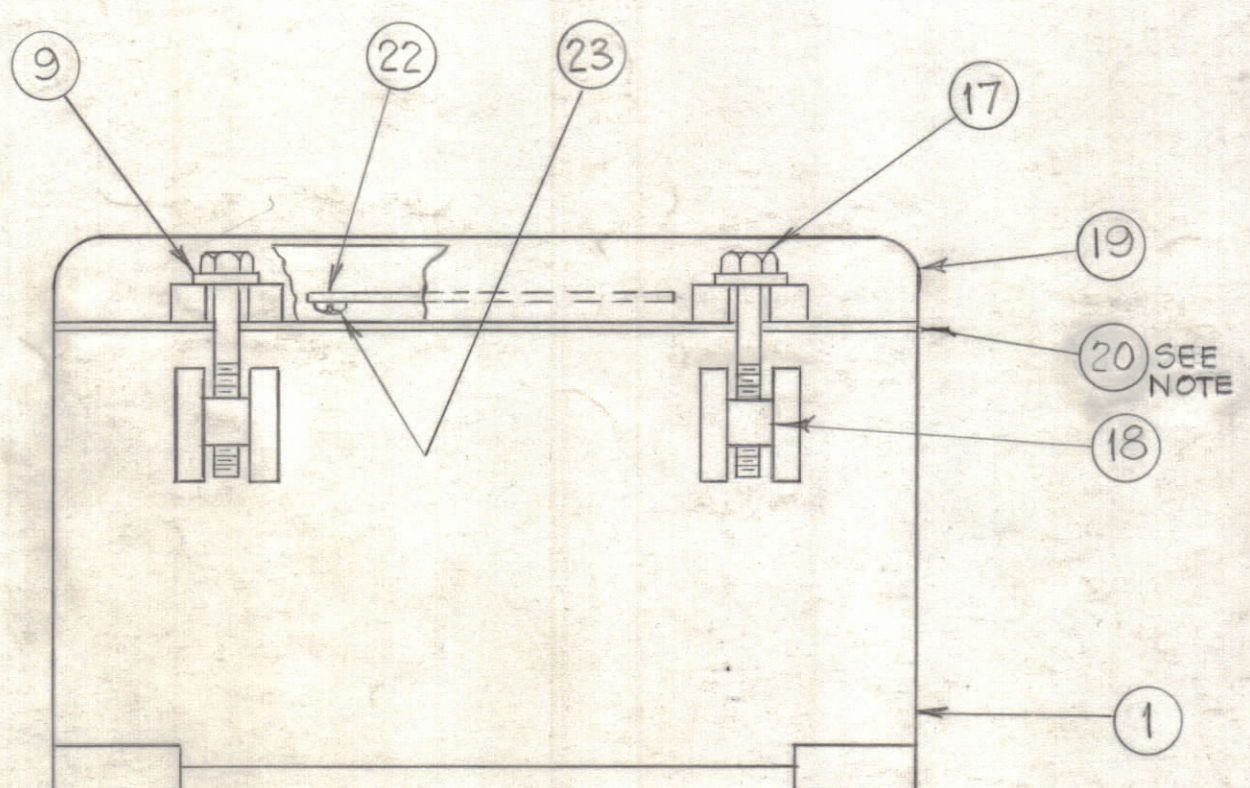
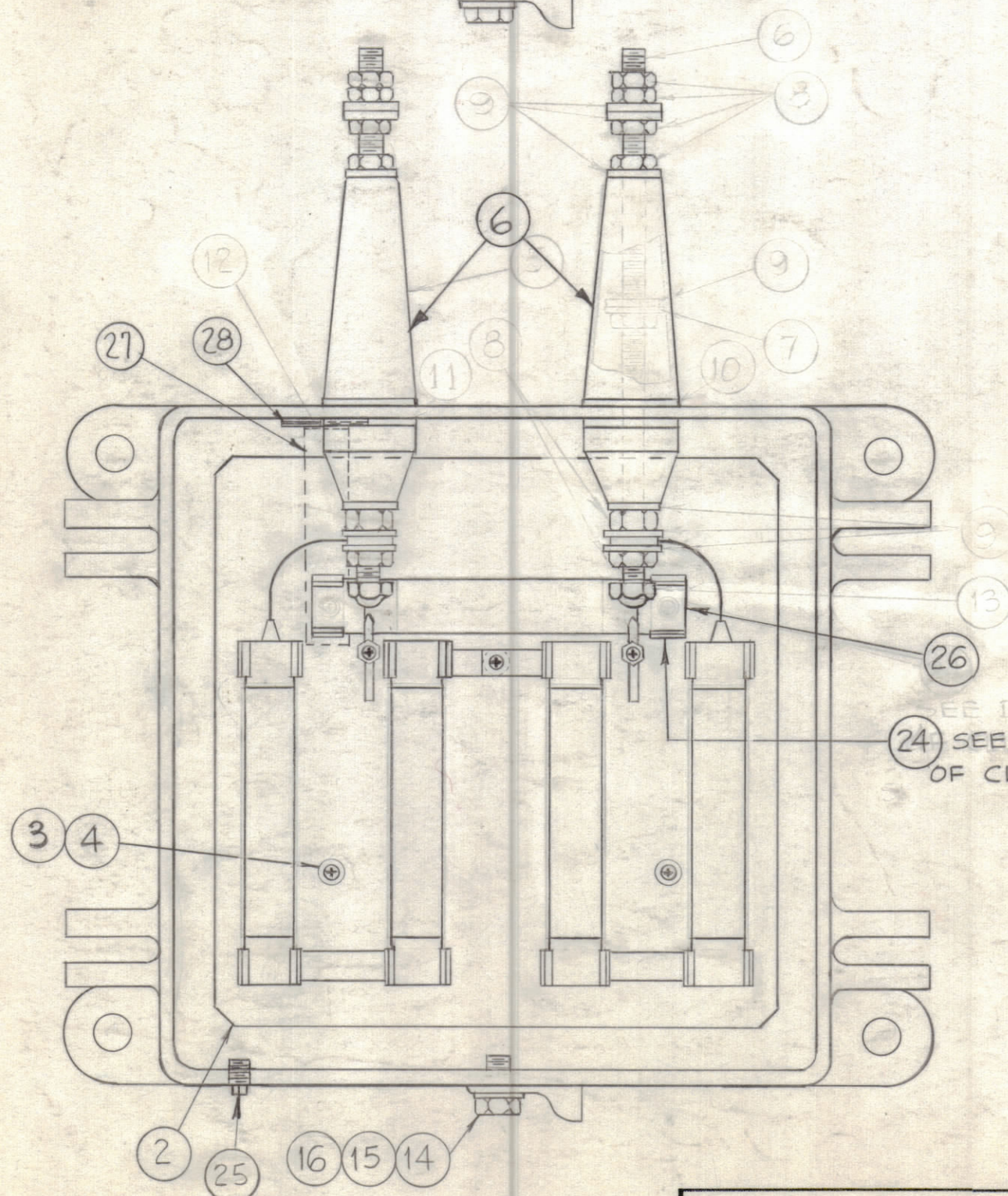
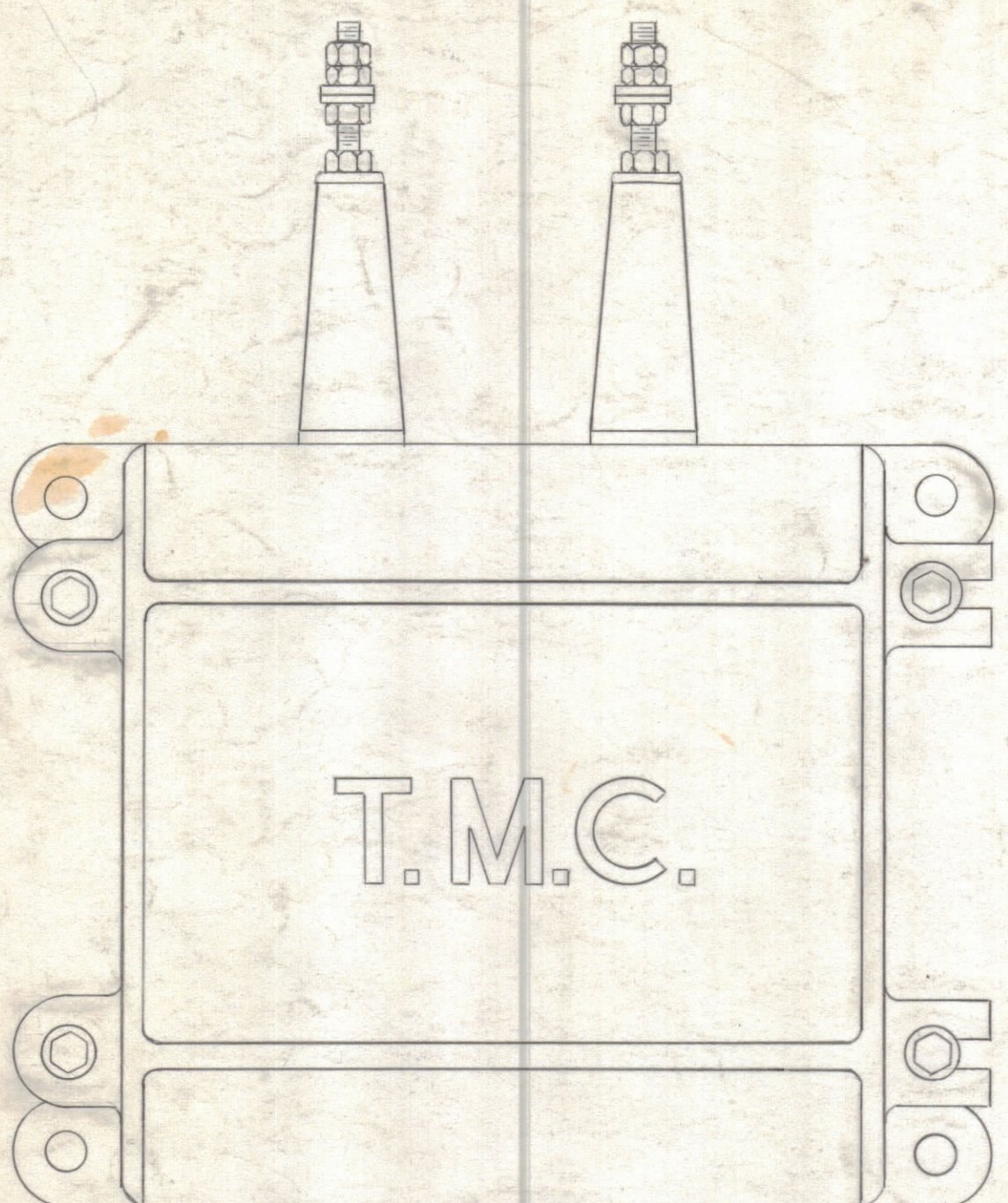


**NOTICE TO PERSONS RECEIVING THIS DRAWING**

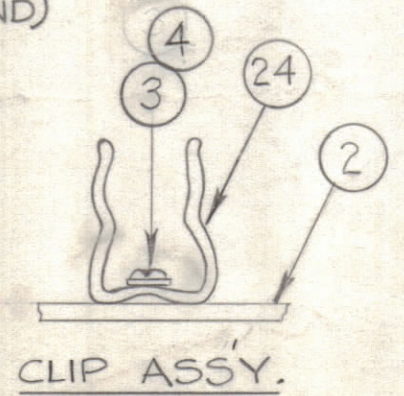
THE TECHNICAL MATERIEL CORPORATION claims proprietary right in the material disclosed hereon. This drawing is issued in confidence for engineering information only and may not be reproduced or used to manufacture anything shown hereon without permission from THE TECHNICAL MATERIEL CORPORATION to the user. This drawing is loaned for mutual assistance and is subject to recall at any time.

Property of:  
THE TECHNICAL MATERIEL CORPORATION  
MAMARONECK, NEW YORK

REVISIONS						
ZONE	SYM	DESCRIPTION	DATE	E.M.N. NO.	DRAFT	CHKD
A 4	A	RTB-13 WAS RTB-10	8-20-62	7096	SG	
EZ	B	ITEMS (27) & (28) ADDED	10-22-62	7475		
EZ DZ	C	ITEM (26) WAS RR-115-100, HARDWARE CLARIFIED, PICTORIAL CLARIFIED	3-22-63	8604		
	D	ON B/M: IT. 5, 7, 8, 10, 11, 12 & 13, DELE; IT. (6) WAS "A-100, INS. STUD. SUB ASSY"; IT. 9, QTY. WAS 18; IT. 26 WAS RR-133-1; ON PICT. CALLOUTS 5, 6, 7, 8, 9, 10, 11, 12 & 13 DELE; CALLOUT 6, RELEG.	12/21/64	13040		



NOTE: ITEM 20  
CEMENT GASKET GA-103 (ITEM 20)  
TO COVER (PM-105) USING  
ITEM 21 (PLIOBOND)



SEE DETAIL  
24 SEE DETAIL  
OF CLIP ASSY.

REQ'D.	ITEM	PART NUMBER	DESCRIPTION	SYMBOL
2	28	AD-101-1/6	DESICANT	
1	27	MS-933	HOLDER, DESICANT	
1	26	RR-115-100	RESISTOR, ASSY.	
1	25	SC-134	PLUG, PIPE	
2	24	FC-101	CLIP, FUSE	
4	23	SFBO25GSN4	SCREW, THREAD CUTTING	
1	22	LD-1138	SCHEMATIC, DIAGRAM	
X	21	GL-101-2	CEMENT, PLIOBOND	
1	20	GA-103	GASKET, COVER	
1	19	PM-105	COVER	
4	18	PM-100	PIN, COVER BOLT	
4	17	SCH2520S528	CAP SCREW, HEX HEAD	
1	16	LW325 M55	LOCKWASHER, SPRING TYPE	
1	15	SCH2520S58	CAP SCREW, HEX HEAD	
1	14	TE-178-2	TERMINAL, ELECTRICAL	
2	13	DELETED BNLT	NUT, CAP	
2	12	DELETED	INSULATOR, INSIDE	
2	11	DELETED	GASKET, COVER	
2	10	DELETED	GASKET, NEOPRENE	
4	9	FW25 H55	WASHER, FLAT	
2	8	DELETED 5514	NUT, HEX	
2	7	DELETED	GASKET, NEOPRENE	
2	6	A-102	INSULATOR ASSY, SUB-ASSY.	
2	5	DELETED	INSULATOR, OUTSIDE	
4	4	LWE08MRN	WASHER, LOCK	
4	3	SCBP0832BN4	SCREW, MACHINE	
1	2	A-2514	RESISTOR & MOUNTING PLATE SUB-ASSY	
1	1	PM-809	CASE, MACHINING	

I. JOHNSON LIST OF MATERIAL			
MATERIAL		THE TECHNICAL MATERIEL CORP. MAMARONECK, NEW YORK	
FINISH		TITLE RHOMBIC TERMINAL UNIT RTB-13	
UNLESS OTHERWISE SPECIFIED DIMENSIONS ARE IN INCHES AND INCLUDE CHEMICALLY APPLIED OR PLATED FINISHES		DRAWN V.R.R.	DATE 7-27-62
DECIMALS .X ± .05 .XX ± .01 .XXX ± .005		CHECKED Jude	DATE 1/31/64
FRACTIONS ± 1/64 ANGLES ± 0° 30'		ELECT. DES. J.S.P.	DATE 7-31-62
TOLERANCES		MECH. DES. J.S.P.	DATE 7-31-62
		FINAL APPROVAL BP	
		DATE 7-31-62	
		SHEET A-2513	
		REV. LTR. D	

**NOTES**

THE CONTENTS OF THIS DRAWING ARE THE EXCLUSIVE PROPERTY OF THE TECHNICAL MATERIEL CORP. ITS UNAUTHORIZED USE OR REPRODUCTION IN WHOLE OR IN PART IS STRICTLY FORBIDDEN.