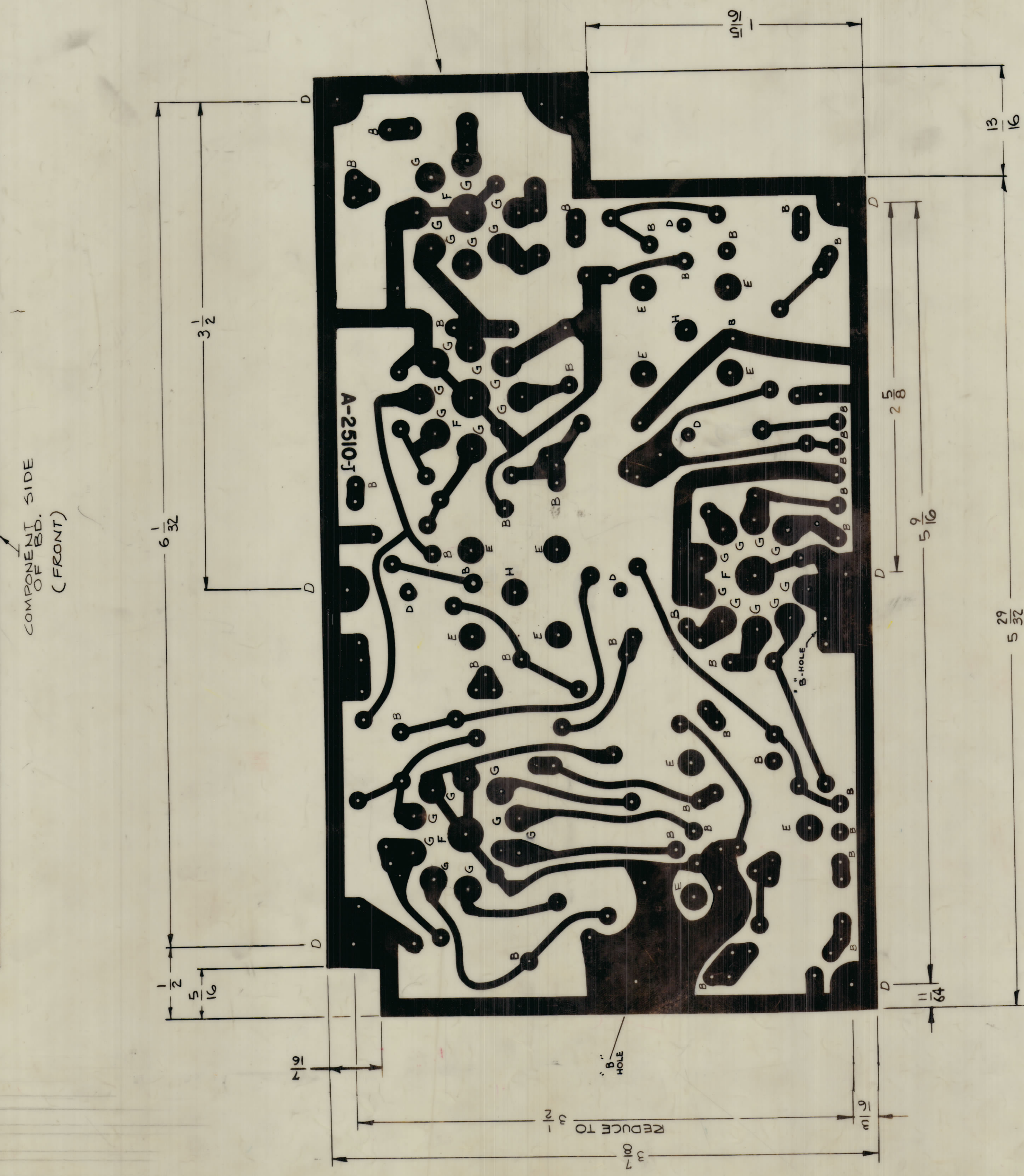
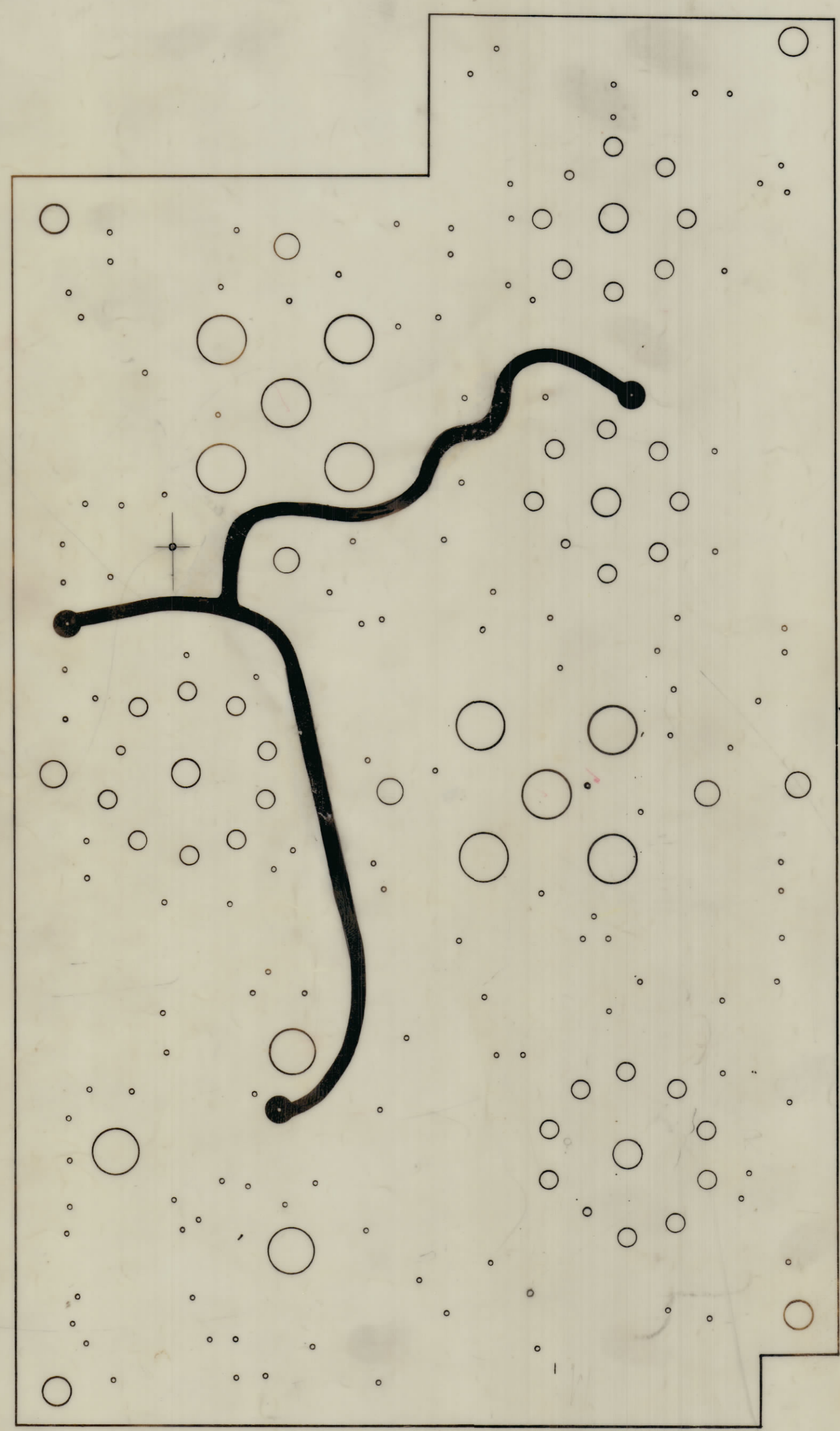


REVISIONS						
ZONE	SYM	DESCRIPTION	DATE	E.M.N. NO.	DRAFT	CHKD
-	E	REVISED & REDRAWN	10/7/63	10199	AP	MP
+	F	ADDED (2) 1/4" HOLES, RE-ROUTED POIL ON FRONT VIEW UPDATED BOTH VIEWS & CLARIFIED DWG.	11/1/63	10750	AP	MP
D, E, F, G, H, J, K	G	DELETED (1) UNMARKED HOLE, CHANG. QUANT. OF HOLES (CHANG. (2) UNMARKED HOLES TO "G" HOLES) TO 40 AND 38	2-20-64	11055	APB	MP
-	H	SEE SHEET 2 OF 2	2-25-64	11655	A.M.	MP
+	J	4 "C" HOLES CHANGED TO "D" HOLES	7-24-64	11738	APB	MP
+	K	SEE SHEET 2 OF 2 REV. "K"	12-11-64	13090	AP	MP



- NOTES:
- MAT'L: SYNTHANE G-11 EPOXY GLASS LAMINATE 3/32 THK., .002 COPPER CLAD, (2) SIDES.
  - DO NOT PRINT LETTER DESIGNATIONS AS SHOWN ON BOARD.
  - HOLES ARE TO BE "PLATED-THRU" WITH MIN. COPPER PLATING THICKNESS OF .0015 & MIN. SOLDER-PLATE (TIN) THICKNESS OF .0005 MIN. FINISHED DIA OF "PLATED-THRU" HOLES.  
 UNMARKED - .050  
 F - .136  
 G - .093
  - ETCHED CKT TO BE TINNED .0005
  - SEE PURCHASING NOTE.

HOLE SCHEDULE		
HOLE	DESCRIPTION	REQD
UNMARKED	# 53 (.059) DR.	AR *
B	# 42 (.093) DR.	40
C	DELETED	
D	5/32 DIA	10
E	1/4 DIA	11
F	# 27 (.144) DR.	4 *
G	# 38 (.101) DR.	32 *
H	5/16 DIA	2

PURCHASING NOTE:  
 ORIGINAL ART WORK TO BE SUPPLIED TO VENDOR FOR MANUFACTURING. ART WORK MUST BE RETURNED TO TMC IN GOOD CONDITION AS SOON AS POSSIBLE.  
DO NOT FOLD ORIGINAL

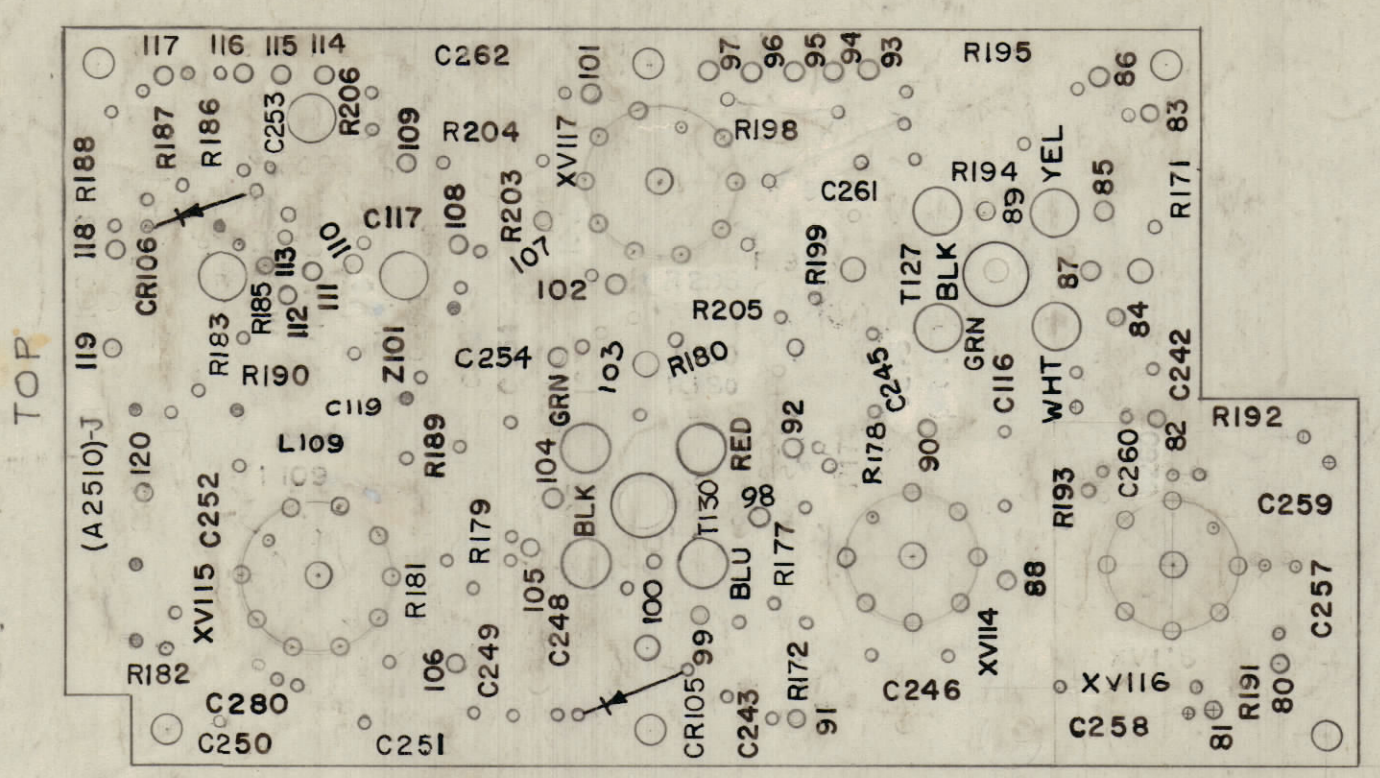
1	GPR-92	A-2510
QTY./UNIT	MODEL USED ON	ASBY. NO.
SCALE	CODE	
APPROX.	A	

REQ'D.	ITEM	PART NUMBER	DESCRIPTION	SYMBOL
LIST OF MATERIAL				
MATERIAL		SEE NOTE 1		
FINISH		#		
		THE TECHNICAL MATERIEL CORP. MAMARONECK, NEW YORK		
		TITLE PRINTED ELECTRICAL CIRCUIT GPR-92 #3		
UNLESS OTHERWISE SPECIFIED DIMENSIONS ARE IN INCHES AND INCLUDE CHEMICALLY APPLIED OR PLATED FINISHES		DRAWN	DATE	FINAL APPROVAL
		AP	10-7-63	BP
		CHECKED	DATE	
		MP	10-7-63	
DECIMALS		FRACTIONS	DATE	
.X ± .05		1/64		
.XX ± .01		ANGLES		
.XXX ± .005		± 90°		
TOLERANCES		± 1/64		
		± .002		
		± .001		
		± .0005		
MECH. DES.		DATE		
SHEET		1 OF 2		
REV. LTR.				

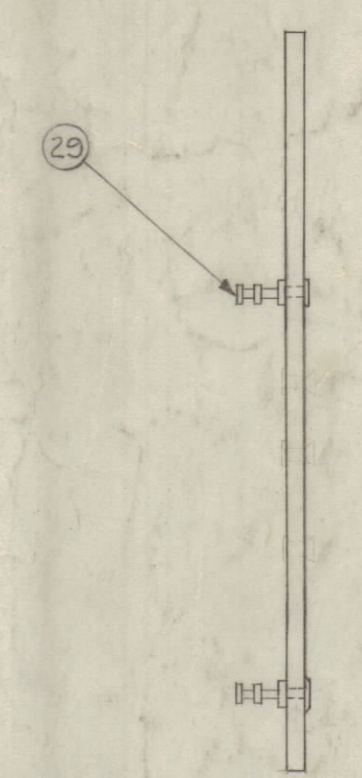
NOTES

A-2510 K

NOTE:  
1. ALL LETTERING TO BE 3/32" HIGH BLACK GOTHIC.



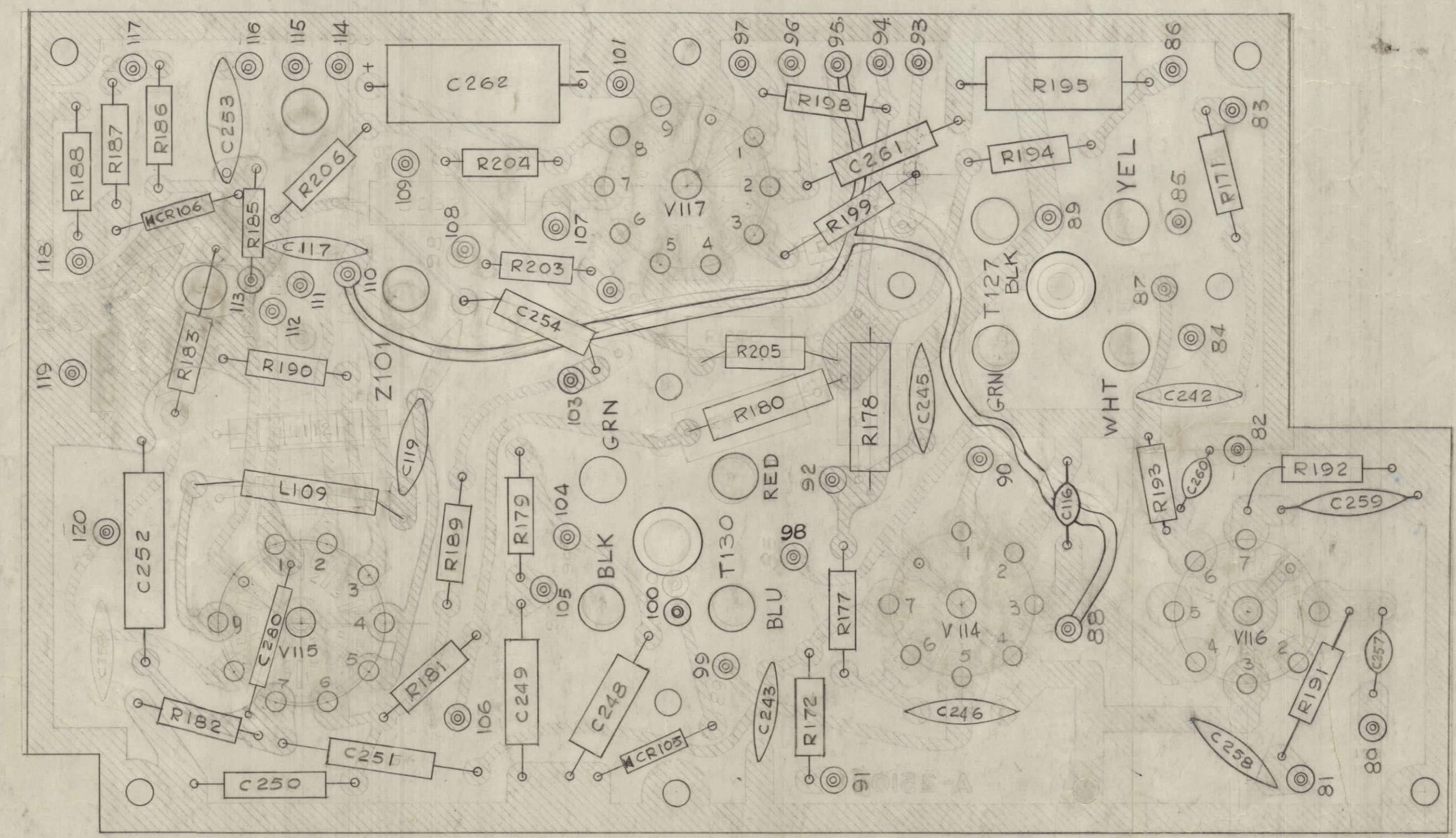
A-2510-2-LETTERING SCALE: 1:1



A-2510-3-SUB-ASSY SCALE: 1:1

REVISIONS						
ZONE	SYM	DESCRIPTION	DATE	E.M. NO.	DRAFT	CHKD
	K	DN (A-2510-2) LETTERING; C260, GRN, C245, C261, R205, R180, 107 & 110 RELOC; R199 WAS R119	12-11-64	13090	22	[Signature]

ASSEMBLY NOTICE  
 1~ TO MOUNT COMPONENTS INSERT LEAD THROUGH PLATED THRU HOLES & BEND ABOUT 1/16" OF LEAD OVER COPPER FOIL AS SHOWN.  
 2~ APPLY HEAT & SOLDER TO LEAD AND FOIL- CAUTION- TOO MUCH HEAT WILL CAUSE THE FOIL TO SEPARATE FROM THE BOARD.  
 3~ CLEAN & INSPECT AS PER S-676.  
 4~ MOUNT TUBE SOCKETS ON PRINT CIRCUIT SIDE OF BD. FILL IN PLATED THRU MOUNTING HOLES WITH SOLDER. REPEAT STEP 3.



A-2510-4-ELECTRICAL ASSY

C250, C254

C253, C117, C243, C258

C242, C246

R104, R198, R183

REQ'D	ITEM	PART NUMBER	DESCRIPTION	SYMBOL
1	44	CC-100-33	CAPACITOR, FIXED CERAMIC DISC	C119
1	43	CM15C101J	CAPACITOR, FIXED MICA	C252
1	42	RC 20 GF 822K	RESISTOR, FIXED, COMPOSITION	R191
1	41	RC 20 GF 331K	RESISTOR, FIXED, COMPOSITION	R192
1	40	RC 20 GF 103K	RESISTOR, FIXED, COMPOSITION	R193
1	39	CL-322	RF COIL, FIXED	L109
1	38	CC215L180K	CAPACITOR, FIXED, MICA	C249
1	37	CM15C680J	CAPACITOR, FIXED, MICA	
1	36	IN 463	SEMICONDUCTOR, DIODE	CR106
1	35	RC 32 GF 224K	RESISTOR, FIXED, COMPOSITION	R205
1	34	CM15C050J	CAPACITOR, FIXED, MICA	C251
2	33	TS-160-1	SOCKET, ELECTRON TUBE, 7-PIN P/C	V112
2	32	TS-161-1	SOCKET, ELECTRON TUBE, 9-PIN P/C	V113
X	31	BS-100	SOLDER, SOFT	
2	30	CC-100-15	CAPACITOR, FIXED, CERAMIC DISC	C260 C259
40	29	TE-127-5	TERMINAL, TURRET	
1	28	IN-34A	SEMICONDUCTOR, DIODE, GERMANIUM	CR105
1	27	CM15C271J	CAPACITOR, FIXED, MICA	C261
1	26			
1	25	CE-105-25-50	CAPACITOR, FIXED, ELECTROLYTIC	C262
4	24	CC-100-32	CAPACITOR, FIXED, CERAMIC DISC	
2	23	-29		C116 C257
1	22	-24		C245
2	21	CC-100-16	CAPACITOR, FIXED, CERAMIC DISC	
1	20	CC-215L050C	CAPACITOR, FIXED, CERAMIC	C280
1	19	CC215L470K	CAPACITOR, FIXED, CERAMIC	C248
1	18	RC42GF823K	RESISTOR, FIXED, COMPOSITION	R195
1	17	RC42GF223K		R180
1	16	RC32GF332K		R178 R185 R182
2	15	RC 20 GF 103K		R181
1	14	104K		R183
1	13	393K		R177 R176
2	12	333K		R199
1	11	101K		R206
1	10	223K		R204
1	9	222K		P172
1	8	221K		R188 R187
2	7	184K		R182
1	6	473K		R203
1	5	124K		
3	4	RC 20 GF 122K	RESISTOR, FIXED, COMPOSITION	
1	3		DELETED	
1	2	RC 20 GF 104K	RESISTOR, FIXED COMPOSITION	R171
1	1	RC 20 GF 152K	RESISTOR, FIXED COMPOSITION	R190

LIST OF MATERIAL			
REQ'D	ITEM	PART NUMBER	DESCRIPTION
1	44	CC-100-33	CAPACITOR, FIXED CERAMIC DISC
1	43	CM15C101J	CAPACITOR, FIXED MICA
1	42	RC 20 GF 822K	RESISTOR, FIXED, COMPOSITION
1	41	RC 20 GF 331K	RESISTOR, FIXED, COMPOSITION
1	40	RC 20 GF 103K	RESISTOR, FIXED, COMPOSITION
1	39	CL-322	RF COIL, FIXED
1	38	CC215L180K	CAPACITOR, FIXED, MICA
1	37	CM15C680J	CAPACITOR, FIXED, MICA
1	36	IN 463	SEMICONDUCTOR, DIODE
1	35	RC 32 GF 224K	RESISTOR, FIXED, COMPOSITION
1	34	CM15C050J	CAPACITOR, FIXED, MICA
2	33	TS-160-1	SOCKET, ELECTRON TUBE, 7-PIN P/C
2	32	TS-161-1	SOCKET, ELECTRON TUBE, 9-PIN P/C
X	31	BS-100	SOLDER, SOFT
2	30	CC-100-15	CAPACITOR, FIXED, CERAMIC DISC
40	29	TE-127-5	TERMINAL, TURRET
1	28	IN-34A	SEMICONDUCTOR, DIODE, GERMANIUM
1	27	CM15C271J	CAPACITOR, FIXED, MICA
1	26		
1	25	CE-105-25-50	CAPACITOR, FIXED, ELECTROLYTIC
4	24	CC-100-32	CAPACITOR, FIXED, CERAMIC DISC
2	23	-29	
1	22	-24	
2	21	CC-100-16	CAPACITOR, FIXED, CERAMIC DISC
1	20	CC-215L050C	CAPACITOR, FIXED, CERAMIC
1	19	CC215L470K	CAPACITOR, FIXED, CERAMIC
1	18	RC42GF823K	RESISTOR, FIXED, COMPOSITION
1	17	RC42GF223K	
1	16	RC32GF332K	
2	15	RC 20 GF 103K	
1	14	104K	
1	13	393K	
2	12	333K	
1	11	101K	
1	10	223K	
1	9	222K	
1	8	221K	
2	7	184K	
1	6	473K	
1	5	124K	
3	4	RC 20 GF 122K	RESISTOR, FIXED, COMPOSITION
1	3		DELETED
1	2	RC 20 GF 104K	RESISTOR, FIXED COMPOSITION
1	1	RC 20 GF 152K	RESISTOR, FIXED COMPOSITION

NOTICE TO PERSONS RECEIVING THIS DRAWING:  
 THE TECHNICAL MATERIEL CORPORATION claims proprietary right in the material disclosed herein. This drawing is issued in confidence for your information only and may not be reproduced or used to manufacture anything shown herein without permission from THE TECHNICAL MATERIEL CORPORATION to the user. This drawing is loaned for mutual assistance and is subject to recall at any time.  
 Property of:  
 THE TECHNICAL MATERIEL CORPORATION  
 MAMARONECK, NEW YORK

QTY/UNIT	MODEL USED ON	ASSY. NO.
1	GPR-32	

UNLESS OTHERWISE SPECIFIED DIMENSIONS ARE IN INCHES AND INCLUDE CHEMICALLY APPLIED OR PLATED FINISHES	DRAWN	DATE	FINAL APPROVAL	DATE
DECIMALS: .XX ± .01, .XXX ± .005	W.S.	7-10-65	[Signature]	
FRACTIONS: ± 1/64, ± 0° 30'	CHECKED	DATE		
TOLERANCES: ± 0° 30'	DATE			
MSCH. DSB.	DATE			

NOTES

TITLE: PRINTED ELECTRICAL CIRCUIT & COMPONENT ASSEMBLY  
 THE TECHNICAL MATERIEL CORP.  
 MAMARONECK, NEW YORK  
 A-2510 K  
 SHEET 2 OF 2