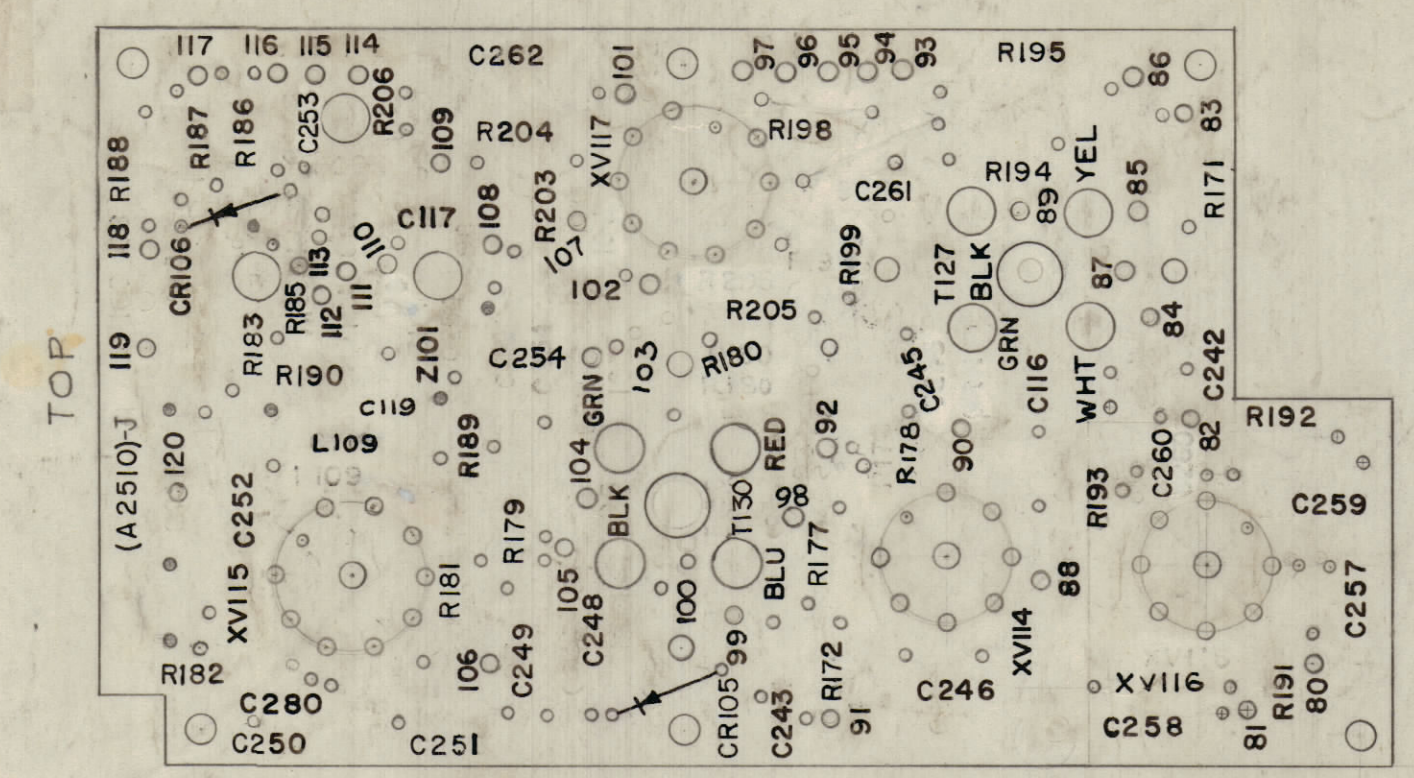
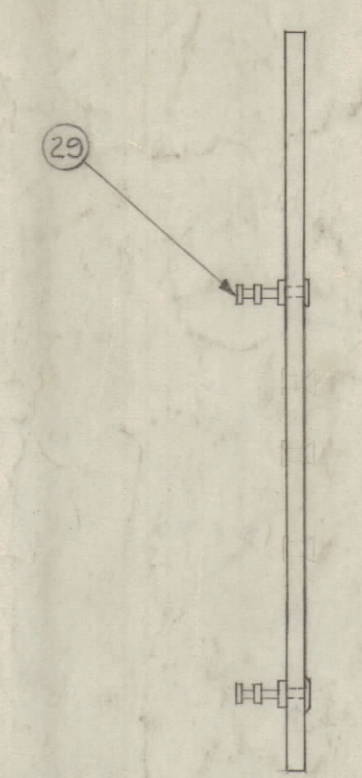


NOTE:  
1. ALL LETTERING TO BE 3/32" HIGH BLACK GOTHIC.



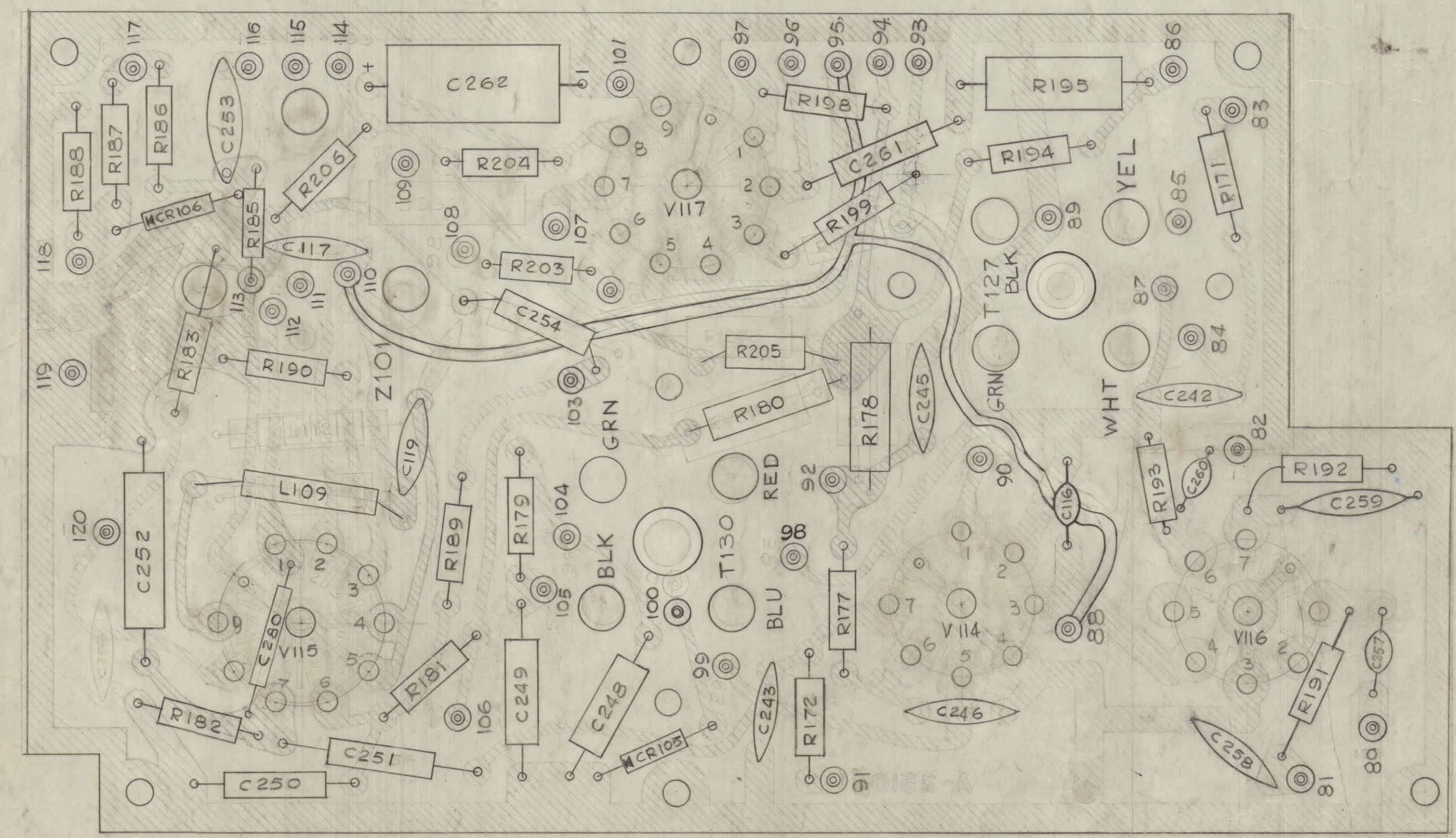
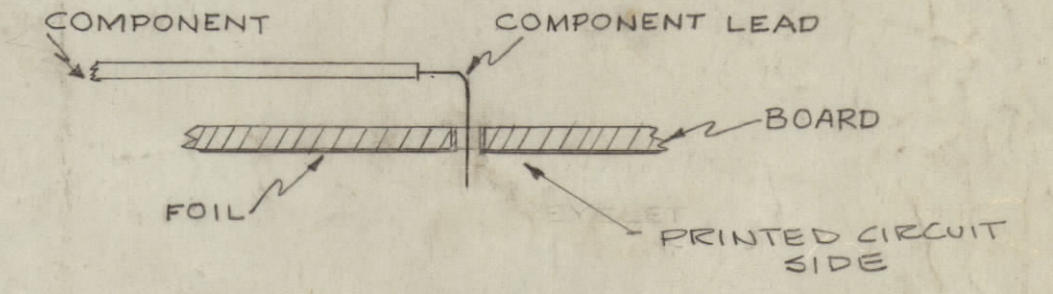
A-2510-2-LETTERING SCALE: 1:1



A-2510-3-SUB-ASSY SCALE: 1:1

REVISIONS						
ZONE	SYM	DESCRIPTION	DATE	E.M. NO.	DRAFT	CHKD
	K	DN(A-2510-2) LETTERING; C260, GRN, C245, C261, R205, R180, 107 & 110 RELOC; R199 WAS R119	12-11-64	13090		

ASSEMBLY NOTICE  
 1~ TO MOUNT COMPONENTS INSERT LEAD THROUGH PLATED THRU HOLES & BEND ABOUT 1/16" OF LEAD OVER COPPER FOIL AS SHOWN.  
 2~ APPLY HEAT & SOLDER TO LEAD AND FOIL- CAUTION- TOO MUCH HEAT WILL CAUSE THE FOIL TO SEPARATE FROM THE BOARD.  
 3~ CLEAN & INSPECT AS PER S-676.  
 4~ MOUNT TUBE SOCKETS ON PRINT CIRCUIT SIDE OF BD. FILL IN PLATED THRU MOUNTING HOLES WITH SOLDER. REPEAT STEP 3.



A-2510-4-ELECTRICAL ASSY,

REQ'D	ITEM	PART NUMBER	DESCRIPTION	SYMBOL
1	44	CC-100-33	CAPACITOR, FIXED CERAMIC DISC	C119
1	43	CM15C101J	CAPACITOR, FIXED MICA	C252
1	42	RC 20 GF 822K	RESISTOR, FIXED, COMPOSITION	R191
1	41	RC 20 GF 331K	RESISTOR, FIXED, COMPOSITION	R192
1	40	RC 20 GF 103K	RESISTOR, FIXED, COMPOSITION	R193
1	39	CL-322	RF COIL, FIXED	L109
1	38	CC215L180K	CAPACITOR, FIXED, MICA	C249
1	37	CM15C680J	CAPACITOR, FIXED, MICA	
1	36	IN 463	SEMICONDUCTOR, DIODE	CR106
1	35	RC 32 GF 224K	RESISTOR, FIXED, COMPOSITION	R205
1	34	CM15C050J	CAPACITOR, FIXED, MICA	C251
2	33	TS-160-1	SOCKET, ELECTRON TUBE, 7-PIN P/C	V117
2	32	TS-161-1	SOCKET, ELECTRON TUBE, 9-PIN P/C	V118
X	31	BS-100	SOLDER, SOFT	
2	30	CC-100-15	CAPACITOR, FIXED, CERAMIC DISC	C260 C259
40	29	TE-127-5	TERMINAL, TURRET	
1	28	IN-34A	SEMICONDUCTOR, DIODE, GERMANIUM	CR105
1	27	CM15C271J	CAPACITOR, FIXED, MICA	C261
1	26			
1	25	CE-105-25-50	CAPACITOR, FIXED, ELECTROLYTIC	C262
4	24	CC-100-32	CAPACITOR, FIXED, CERAMIC DISC	C116 C257
2	23			C247
1	22			C245
2	21	CC-100-16	CAPACITOR, FIXED, CERAMIC DISC	
1	20	CC-215L050C	CAPACITOR, FIXED, CERAMIC	C280
1	19	CC215L470K	CAPACITOR, FIXED, CERAMIC	C248
1	18	RC42GF823K	RESISTOR, FIXED, COMPOSITION	R195
1	17	RC42GF223K		R180
1	16	RC32GF332K		R178
2	15	RC 20 GF 103K		R185 R186
1	14			R181
1	13			R189
2	12			R177 R178
1	11			R199
1	10			R206
1	9			R204
1	8			R172
2	7			R188 R187
1	6			R182
1	5			R203
3	4	RC 20 GF 122K	RESISTOR, FIXED, COMPOSITION	
1	3		DELETED	
1	2	RC 20 GF 104K	RESISTOR, FIXED COMPOSITION	R171
1	1	RC 20 GF 152K	RESISTOR, FIXED COMPOSITION	R190

MATERIAL		LIST OF MATERIAL	
THE TECHNICAL MATERIEL CORP. MAMARONECK, NEW YORK		THE TECHNICAL MATERIEL CORP. MAMARONECK, NEW YORK	
PRINTED ELECTRICAL CIRCUIT & COMPONENT ASSEMBLY		PRINTED ELECTRICAL CIRCUIT & COMPONENT ASSEMBLY	
SCALE: 2:1 & AS NOTED	CODE: A	ASSY. NO.	
UNLESS OTHERWISE SPECIFIED DIMENSIONS ARE IN INCHES AND INCLUDE CHEMICALLY APPLIED OR PLATED FINISHES		DRAWN: W.S.	DATE: 7-10-64
DECIMALS: .XX ± .01	FRACTIONS: 1/64	CHECKED: [Signature]	DATE: 7-16-64
ANGLES: ± 0° 30'	TOLERANCES: ± 0° 30'	ELECT. DES.:	DATE:
THE CONTENTS OF THIS DRAWING ARE THE EXCLUSIVE PROPERTY OF THE TECHNICAL MATERIEL CORP. ITS UNAUTHORIZED USE OR REPRODUCTION IN WHOLE OR IN PART IS STRICTLY FORBIDDEN.		MSCH. DES.:	DATE:
		DATE: 1-11-65	SHEET 2 OF 2

NOTICE TO PERSONS RECEIVING THIS DRAWING:  
 THE TECHNICAL MATERIEL CORPORATION claims proprietary right in the material disclosed herein. This drawing is issued in confidence for your information only and may not be reproduced or used to manufacture anything shown herein without permission from THE TECHNICAL MATERIEL CORPORATION to the user. This drawing is loaned for mutual assistance and is subject to recall at any time.  
 Property of:  
 THE TECHNICAL MATERIEL CORPORATION  
 MAMARONECK, NEW YORK

NOTES