

NOT TO PERSONS RECEIVING THIS DRAWING

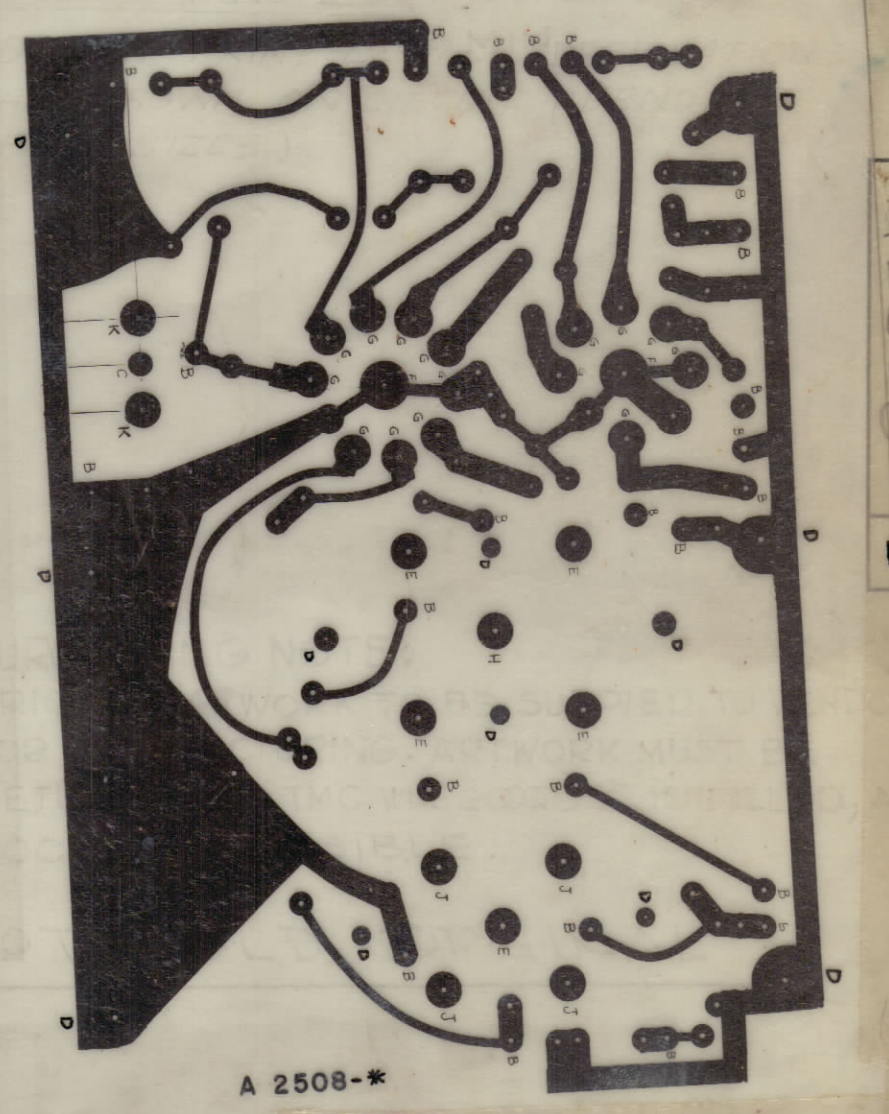
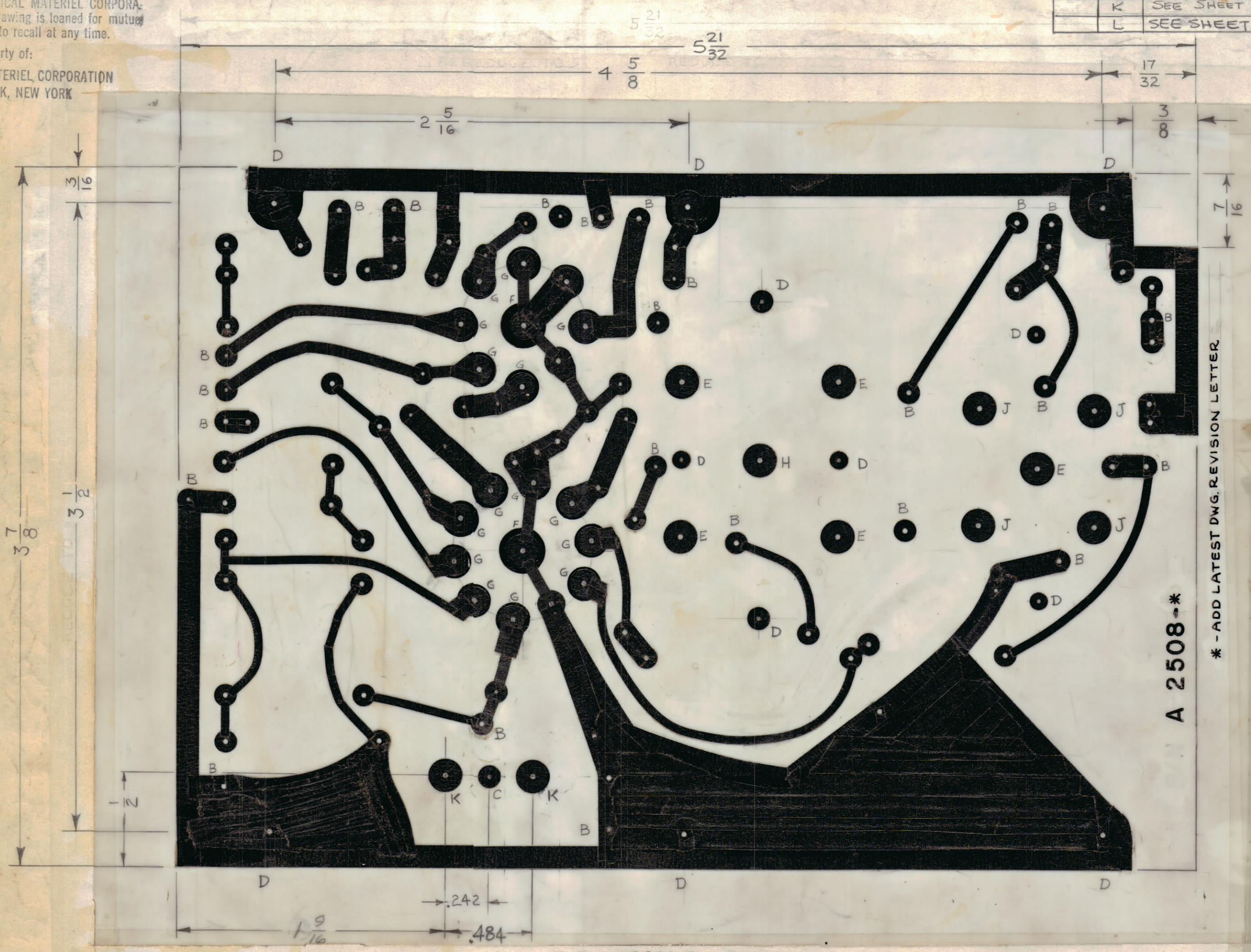
THE TECHNICAL MATERIEL CORPORATION claims proprietary right in the material disclosed herein. This drawing is issued in confidence for engineering information only and may not be reproduced or used to manufacture anything shown hereon without permission from THE TECHNICAL MATERIEL CORPORATION to the user. This drawing is loaned for mutual assistance and is subject to recall at any time.

Property of:
THE TECHNICAL MATERIEL CORPORATION
MAMARONECK, NEW YORK

REVISIONS						
ZONE	SYM	DESCRIPTION	DATE	E.M.N. NO.	DRAFT	CHKD
	F	SEE SHEET 2 OF 2 FOR REVISION	4-23-64	11277	A.M.	
F1	G	HOLE "C" REQ'D WAS 7, HOLE "D" REQ'D WAS 6 ON PICT. 4 "C" HOLES CHG. TO "D", REV. LETTER NOTE ADD	6-8-64	11508	W.B.	@
E4	H	2 "C"-HOLES CHANGED TO "D"-HOLES	7-24-64	11738	W.B.	@
	J	SEE SHEET 2 OF 2 REV "J"	11-12-64	12920	W.B.	@
	K	SEE SHEET 2 OF 2 REV "K"	1-31-66	15674	H.A.	
	L	SEE SHEET 2 OF 2	2-28-67	17845		

PURCHASING NOTE:
ORIGINAL ARTWORK TO BE SUPPLIED TO VENDOR FOR MANUFACTURING. ARTWORK MUST BE RETURNED TO TMC IN GOOD CONDITION, AS SOON AS POSSIBLE.
DO NOT FOLD ORIGINAL

HOLE SCHEDULE		
LETTER	SIZE	NO. REQ'D
UNMARKED	#53 (.049) DR	AR
B	DR #42 (.093)	24
C	1/8 DIA	1
D	5/32 "	12
E	3/8 "	5
F	*27 (.144) DR.	2
G	*38 (.101) DR.	16
H	1/2 DIA	1
J	1/4 DIA	4
K	1/4 DIA	2



- NOTES:
- MATERIAL: SYNTHANE G-II EPOXY GLASS LAMINATE 3/32 THICK, .002. COPPER CLAD, ONE SIDE.
 - DO NOT PRINT LETTER DESIGNATIONS AS SHOWN ON BOARD.
 - HOLES ARE TO BE "PLATED-THRU" WITH MINIMUM COPPER PLATING THICKNESS OF .0015 & MINIMUM SOLDER-PLATE (TIN) THICKNESS OF .0005. MIN. FINISHED DIA. OF "PLATED-THRU HOLES":
UNMARKED ~ .050
F ~ .136
G ~ .093
 - ETCHED CIRCUIT TO BE TINNED .0005 THICK.
 - SEE PURCHASING NOTE.

Q'TY./UNIT	MODEL USED ON	ASS'Y. NO.
1	GPR-92	A2508 SHEET 2
SCALE	CODE	
2:1	A	

REQ'D.	ITEM	PART NUMBER	DESCRIPTION	SYMBOL
STRUMER LIST OF MATERIAL				
SEE NOTE 1		THE TECHNICAL MATERIEL CORP. MAMARONECK, NEW YORK		
FINISH		TITLE PRINTED ELECTRICAL CIRCUIT GPR-92		
UNLESS OTHERWISE SPECIFIED DIMENSIONS ARE IN INCHES AND INCLUDE CHEMICALLY APPLIED OR PLATED FINISHES		DRAWN W.S.	DATE 1/9/62	FINAL APPROVAL BP
DECIMALS X ± .05 XX ± .01 XXX ± .005		CHECKED Hde	DATE 10/21/62	DATE
FRACTIONS ± 1/64 ANGLES ± 0° 30'		ELECT. DES. MP	DATE 1-11-62	SHEET 1 OF 2
TOLERANCES		A 2508		
		REV. LTR.		

NOTES

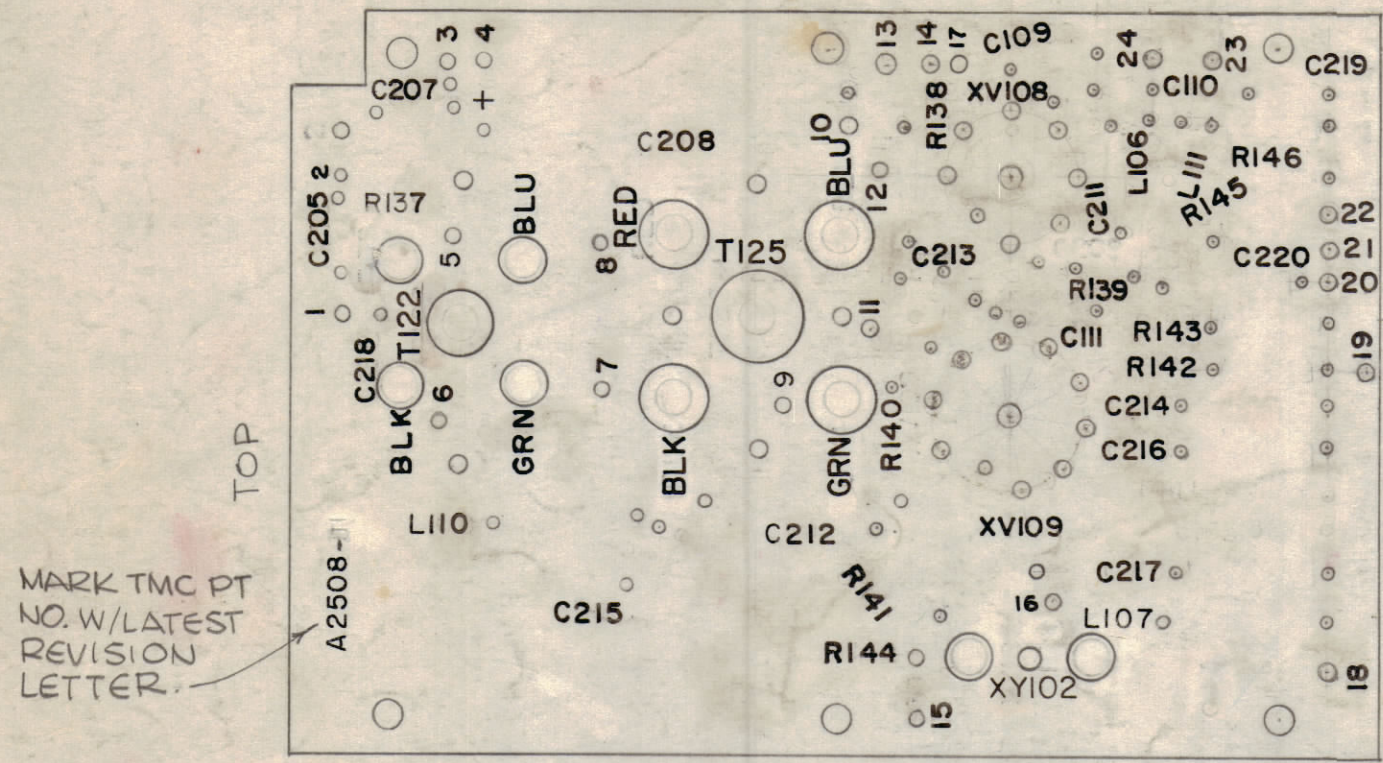
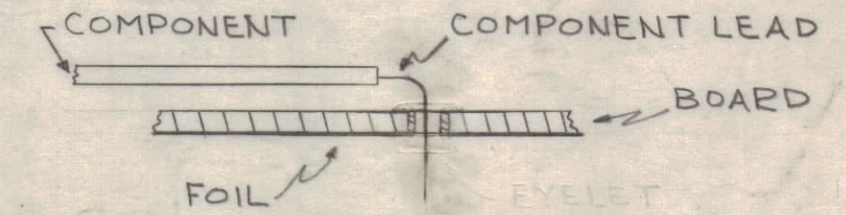
THE CONTENTS OF THIS DRAWING ARE THE EXCLUSIVE PROPERTY OF THE TECHNICAL MATERIEL CORP. ITS UNAUTHORIZED USE OR REPRODUCTION IN WHOLE OR IN PART IS STRICTLY FORBIDDEN.

NOTE: ALL LETTERING TO BE 3/32 HIGH BLACK GOTHIC.
 1. ALL LETTERING TO BE 3/32 HIGH BLACK GOTHIC.
 2. PRINTING WITH INK OR GRAPHIC GREEN OR EQU.

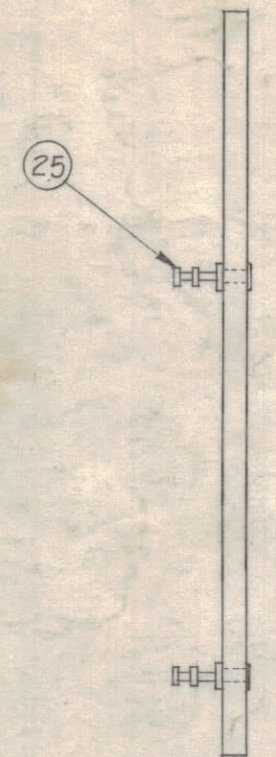
REVISIONS

ZONE	SYM	DESCRIPTION	DATE	E.M.N. NO.	DRAFT	CHKD	APPR
D2	A	ITEM (16) WAS CE-110-1, C109 ADDED	2-21-63	8327			
C6	B	(1) STRIP DELETED; SEE SHEET (10) REV "B"	2-27-63	8403			
-	C	DWG UPDATED & CLARIFIED PER EMN, 10149	4/8/63	10149			
-	D	DWG UPDATED & CLARIFIED (10566 EMN)	12/8/63	10566			
ALL	E	EXTENSIVE CHANGES REF. EMN No 11053	3.18.64	11053			
E3	F	ITEM #29 REQ'D. WAS 2	4.22.64	11277			
-	G	SEE SHEET 1 OF 2	6.8.64	11508			
-	H	SEE SHEET 1 OF 2 REV. H	7.24.64	11738			
C2, D3	J	IT. II CM5C-331J DELE., IT. 21 WAS 1 REQ. 8 SYM C217 ADD.	11.12.64	12920			
K		DELE. IT. 15; CHGD. IT. 12, 17, 19, 21 THRU 24, ADD. IT. 34	1-21-66	15674			
L		ALL RESISTOR TOL. WERE K	2-28-67	17865			

- TO MOUNT COMPONENTS - INSERT LEAD THROUGH PLATED-THRU HOLES & BEND ABOUT 1/16" OF LEAD OVER COPPER FOIL AS SHOWN.
- APPLY HEAT & SOLDER TO LEAD. AND FOIL - CAUTION - TOO MUCH HEAT WILL CAUSE THE FOIL TO SEPARATE FROM THE BOARD.
- CLEAN & INSPECT AS PER S-676.
- MOUNT TUBE SOCKETS ON FOIL SIDE OF BOARD. FILL-IN PLATED-THRU MOUNTING HOLES WITH SOLDER. REPEAT STEP 3.



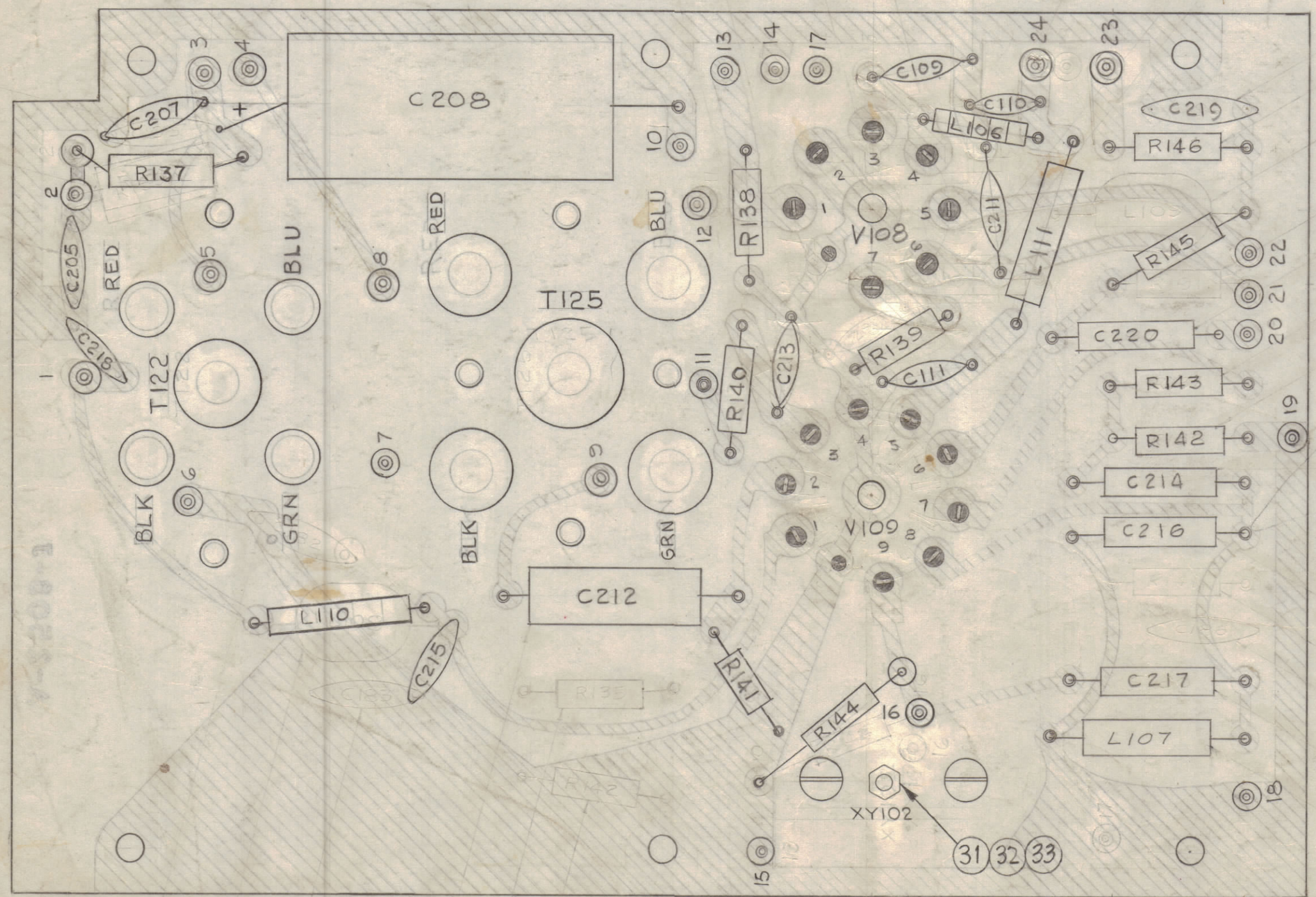
A-2508-2 - LETTERING



A-2508-3 - SUB-ASSY.

SCALE 1:1

SCALE 1:1



A-2508-4 ELECTRICAL ASSY.

NOTES

1	GPR-92	
QTY./UNIT	MODEL USED ON	ASSY. NO.
SCALE 2:1	CODE	
& AS NOTED	A	
THE CONTENTS OF THIS DRAWING ARE THE EXCLUSIVE PROPERTY OF THE TECHNICAL MATERIEL CORP. ITS UNAUTHORIZED USE OR REPRODUCTION IN WHOLE OR IN PART IS STRICTLY FORBIDDEN.		

REQ'D.	ITEM	PART NUMBER	DESCRIPTION	SYMBOL
1	34	CZ 275-101	100 uh, CHOKE	L110
1	33	NTH0440 BNG	NUT, HEX.	
1	32	LW304 MEN	LOCK, WASHER, SPLIT	
1	31	SCBPO440 BN7	SCREW, MACHINE	
1	30	CU-149-1	HOLDER, CRYSTAL	
1	29	TS-104-2	SOCKET, CRYSTAL	XY102
X	28	BS-100	SOLDER, SOFT	
1	27	TS-161-1	SOCKET, ELECTRON TUBE, 9-PIN P/C	XV109
1	26	TS-160-1	SOCKET, ELECTRON TUBE, 7-PIN P/C	XV108
24	25	TE-127-5	TERMINAL, TURRET	
1	24	CM-15F-471-J03	CAPACITOR, FIXED, MICA	C214
1	23	CM-15F-271-J03		C220
1	22	CM-15F-431-J03		C216
2	21	CM-15F-101-J03	CAPACITOR, FIXED, MICA	C212, 217
1	20	CL-306	COIL, R.F. MOLDED	L111
8	19	CI-120-1	FERRITE, BEADS	L106
1	18	CL-240-39	COIL, R.F. MOLDED	L107
4	17	CC-100-15	CAPACITOR, FIXED, CERAMIC, DISC.	C218, C213
1				