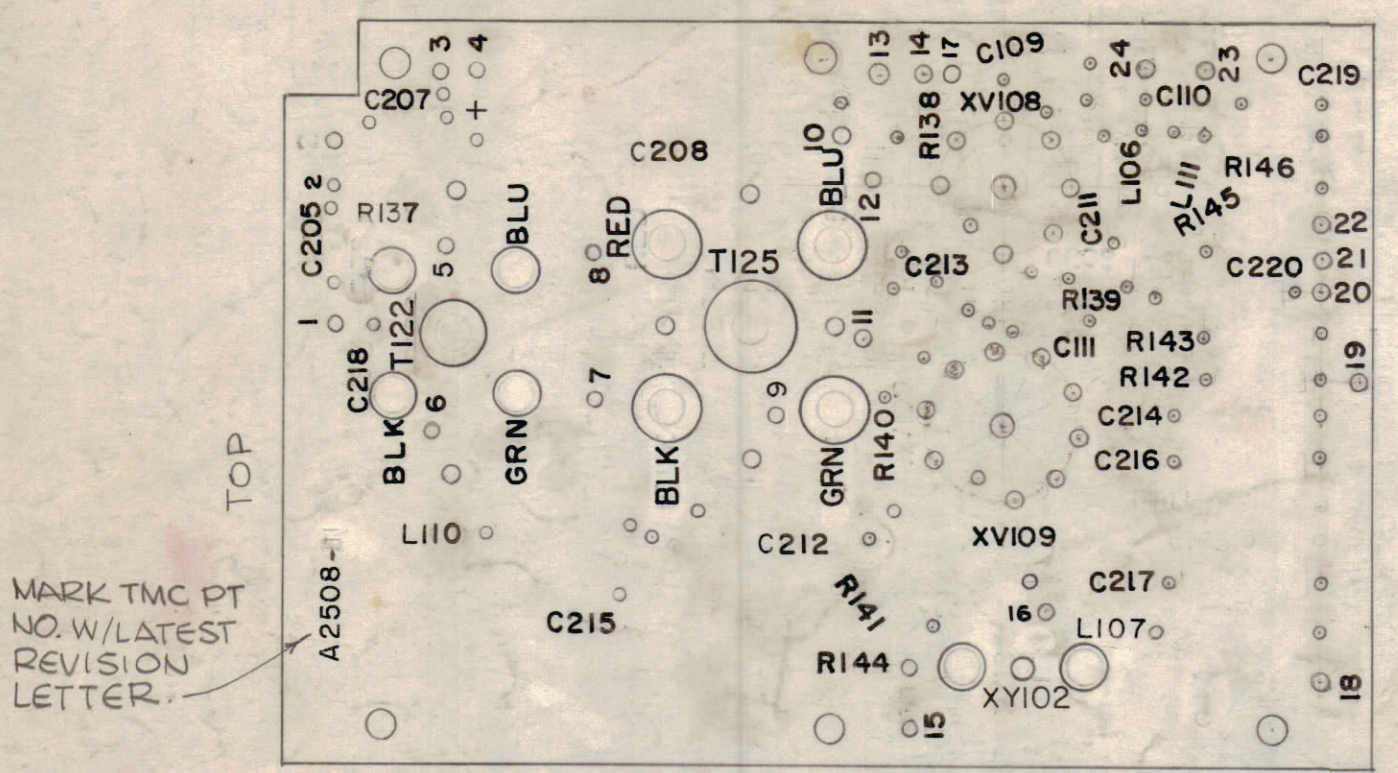
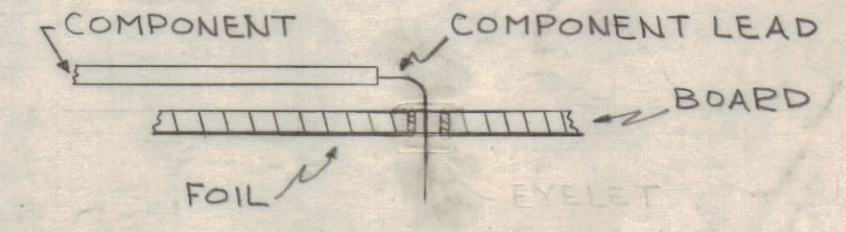


NOTE: ALL LETTERING TO BE 3/32 HIGH BLACK GOTHIC.
 I. ALL LETTERING TO BE 3/32 HIGH BLACK GOTHIC.

REVISIONS

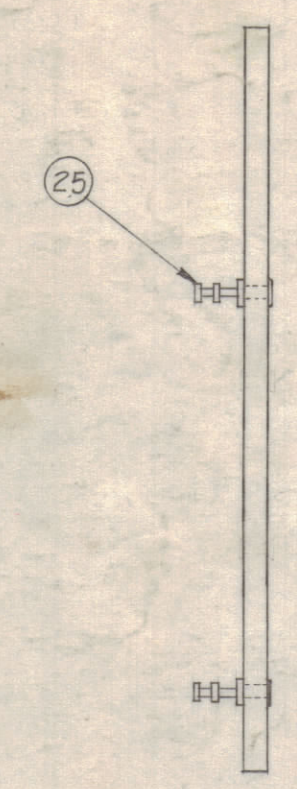
ZONE	SYM	DESCRIPTION	DATE	E.M.N. NO.	DRAFT	CHKD	APPR
D2	A	ITEM(16) WAS CE-110-1, C109 ADDED	2-21-63	8327			
C6	B	(1) STRIP DELETED; SEE SHEET (2) REV "B"	2-27-63	8403			
-	C	DWG UPDATED & CLARIFIED PER EMN, 10149	4/1/63	10149			
-	D	DWG UPDATED & CLARIFIED (10566 EMN)	12/1/63	10566			
ALL	E	EXTENSIVE CHANGES REF. EMN No 11053	3.18.64	11053			
E3	F	ITEM #29 REQ'D. WAS 2	4.22.64	11277			
-	G	SEE SHEET 1 OF 2	6.8.64	11508			
-	H	SEE SHEET 1 OF 2 REV. H	7.24.64	11738			
C2, D3	J	IT-11 CM15C-331J DELE., IT-21 WAS 1 REQ & SYM C217 ADD.	11.12.64	12920			
K		DELE. IT 15; CHGD. IT-12, 17, 19, 21 THRU 24, ADD. IT 34	1-21-66	15674			
L		ALL RESISTOR TOL. WERE K	2-28-67	17865			

- 1 - TO MOUNT COMPONENTS - INSERT LEAD THROUGH PLATED-THRU HOLES & BEND ABOUT 1/16" OF LEAD OVER COPPER FOIL AS SHOWN.
- 2 - APPLY HEAT & SOLDER TO LEAD. AND FOIL - CAUTION - TOO MUCH HEAT WILL CAUSE THE FOIL TO SEPARATE FROM THE BOARD.
- 3 - CLEAN & INSPECT AS PER S-676.
- 4 - MOUNT TUBE SOCKETS ON FOIL SIDE OF BOARD. FILL-IN PLATED-THRU MOUNTING HOLES WITH SOLDER. REPEAT STEP 3.



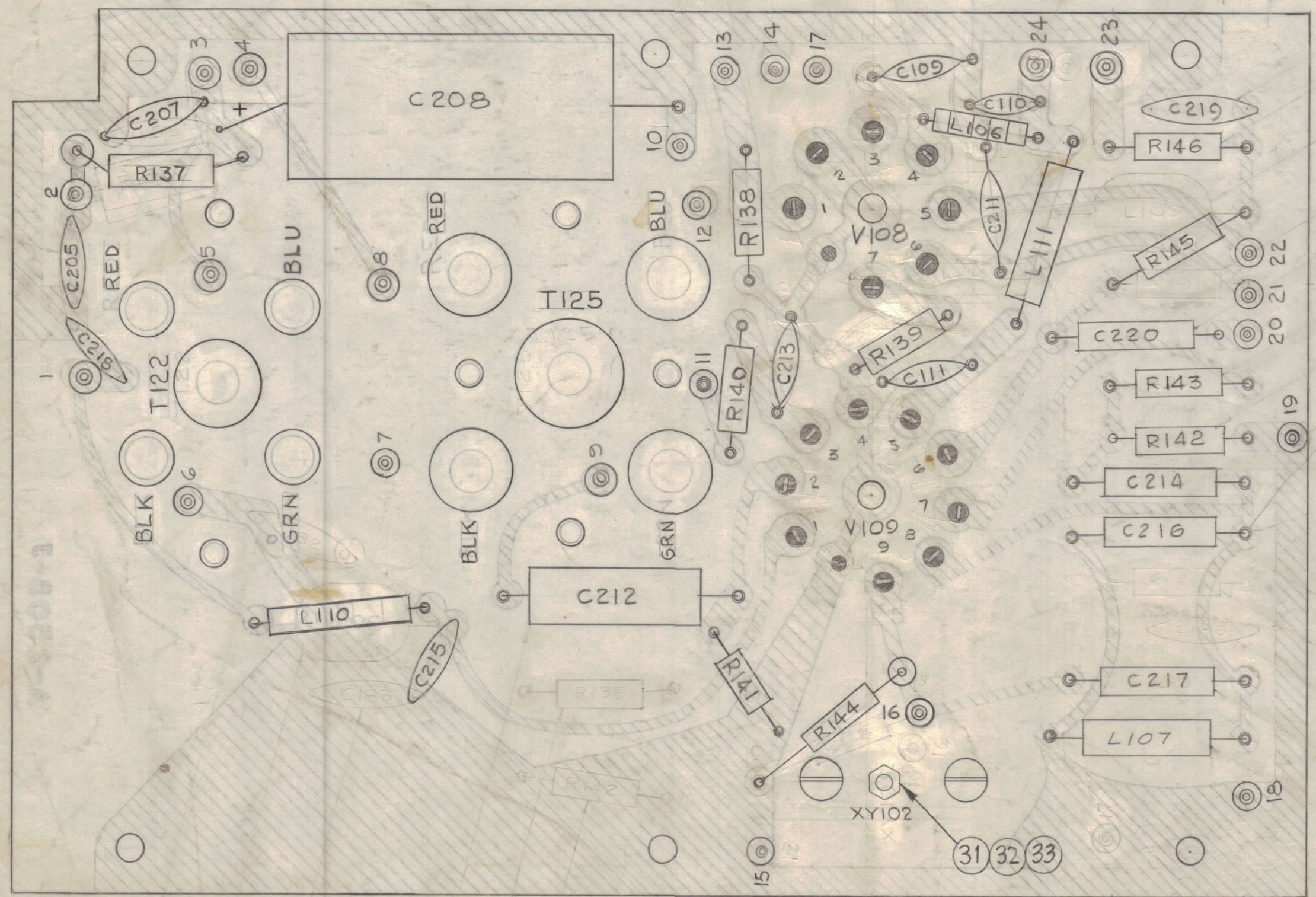
A-2508-2 - LETTERING

SCALE 1:1



A-2508-3 - SUB-ASSY.

SCALE 1:1



A-2508.4 ELECTRICAL ASSY.

1	34	CZ 275-101	100 μ h, CHOKE	L110
1	33	NTH0440 BNG	NUT, HEX.	
1	32	LW304 MEN	LOCK, WASHER, SPLIT	
1	31	SCBP0440 BN7	SCREW, MACHINE	
1	30	CU-149-1	HOLDER, CRYSTAL	
1	29	TS-104-2	SOCKET, CRYSTAL	XY102
X	28	BS-100	SOLDER, SOFT	
1	27	TS-161-1	SOCKET, ELECTRON TUBE, 9-PIN P/C	XV109
1	26	TS-160-1	SOCKET, ELECTRON TUBE, 7-PIN P/C	XV108
24	25	TE-127-5	TERMINAL, TURRET	
1	24	CM-15F-471-J03	CAPACITOR, FIXED, MICA	C214
1	23	CM-15F-271-J03		C220
1	22	CM-15F-431-J03		C216
2	21	CM-15F-101-J03	CAPACITOR, FIXED, MICA	C212, 217
1	20	CL-306	COIL, R.F. MOLDED	L111
8	19	CI-120-1	FERRITE BEADS	L106
1	18	CL-240-39	COIL, R.F. MOLDED	L107
4	17	CC-100-15	CAPACITOR, FIXED, CERAMIC, DISC.	C218, C213
1	16	CE-110-3VN	CAPACITOR, FIXED, ELECTROLYTIC	C208
1	15	DELETED	CAPACITOR, FIXED, CERAMIC, DISC.	
2	14	CC-100-29	CAPACITOR, FIXED, CERAMIC, DISC.	C110, C111
2	13	CC-100-24		C219, C109
2	12	CC-100-16	CAPACITOR, FIXED, CERAMIC, DISC.	
1	11	DELETED	CAPACITOR, FIXED, CERAMIC, DISC.	
1	10	RC20GF221J	RESISTOR, FIXED, COMPOSITION	R139
1	9	RC32GF102J	RESISTOR, FIXED, COMPOSITION	R137
1	8	RC20GF683J		R144
1	7	471J		R140
1	6	470J		R143
1	5	560J		R138
1	4	223J		R145
1	3	222J		R146
1	2	122J		R142
1	1	RC20GF105J	RESISTOR, FIXED, COMPOSITION	R141

REQ'D.	ITEM	PART NUMBER	DESCRIPTION	SYMBOL
STRUMER LIST OF MATERIAL				
MATERIAL			THE TECHNICAL MATERIEL CORP. MAMARONECK, NEW YORK	
FINISH			TITLE PRINTED ELECTRICAL CIRCUIT # COMPONENT ASSEMBLY (2ND MIXER)	
DRAWN	DATE	FINAL APPROVAL	DATE	
W.S.	1/14/63	BSP		
CHECKED	DATE	A-2508		
Hude	1/14/63			
ELECT. DES.	DATE			
MECH. DES.	DATE			
M.P.	1-10-63	SHEET 2 OF 2		
UNLESS OTHERWISE SPECIFIED DIMENSIONS ARE IN INCHES AND INCLUDE CHEMICALLY APPLIED OR PLATED FINISHES				REV. LTR.
DECIMALS	FRACTIONS			
.X \pm .05	\pm 1/64			
.XX \pm .01	ANGLES			
.XXX \pm .005	\pm 0° 30'			

QTY./UNIT	MODEL USED ON	ASSY. NO.
1	GPR-92	
SCALE 2:1 & AS NOTED	CODE A	

NOTES

THE CONTENTS OF THIS DRAWING ARE THE EXCLUSIVE PROPERTY OF THE TECHNICAL MATERIEL CORP. ITS UNAUTHORIZED USE OR REPRODUCTION IN WHOLE OR IN PART IS STRICTLY FORBIDDEN.