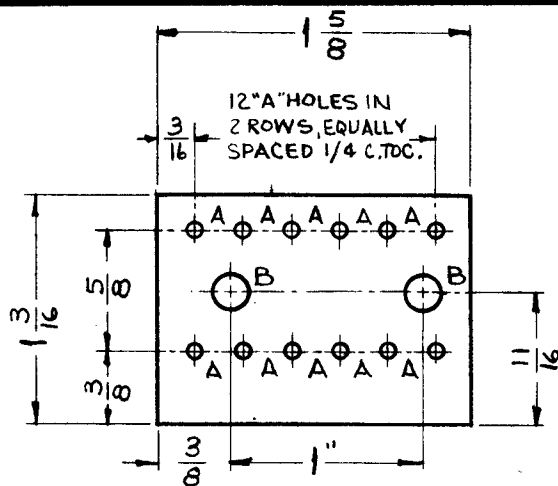


A-2506 C

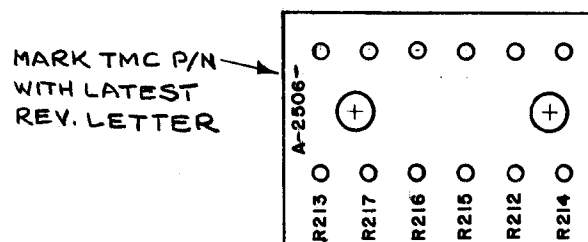
THE CONTENTS OF THIS DRAWING ARE THE EXCLUSIVE PROPERTY OF THE TECHNICAL MATERIEL CORP. ITS UNAUTHORIZED USE OR REPRODUCTION IN WHOLE OR IN PART IS STRICTLY FORBIDDEN.



LEGEND		
HOLE	DESCRIPTION	REQ
A	.073 DIA.	12
B	.189 DIA.	2

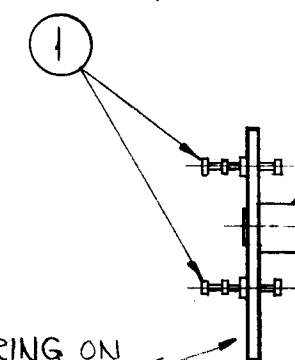
STAGE *1 MACHINING (A-2506-1)
MATERIAL .062, XXXP PHENOLIC, FINISH - NATURAL

1/16 HIGH, BLACK LUSTERLESS GOTHIC LETTERING.
MARKING PROCESS: AS PER TMC SPECIFICATION S-727



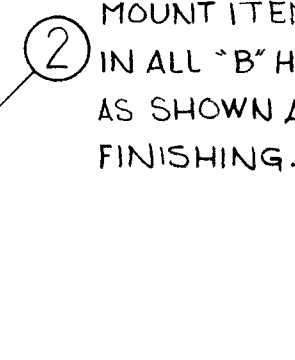
STAGE *2 STAMPING (A-2506-2)

MOUNT ITEM 1 IN ALL "A" HOLES AS SHOWN AFTER FINISHING.

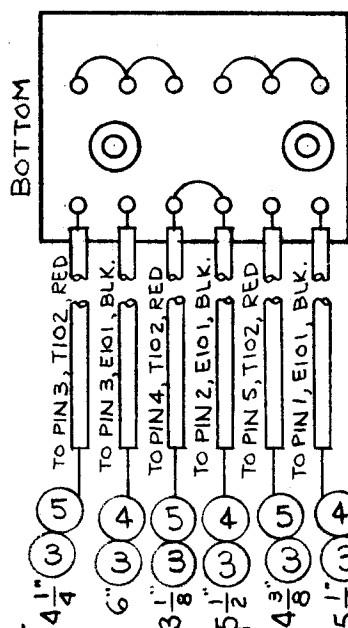
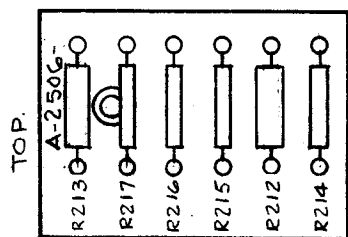


LETTERING ON THIS SIDE

MOUNT ITEM 2 IN ALL "B" HOLES AS SHOWN AFTER FINISHING.



STAGE *3 SUB-ASSY (A-2506-3)



NOTE:
ALL SLEEVING TO BE 1/2" SHORTER THAN BUSS WIRE.

STAGE *4 ELECTRICAL ASSY (A-2506-4)

2	9	RC32GF271K	RESISTOR, FIXED, COMPOSITION	R212, R213
X	8	BS-100	SOLDER, SOFT	
2	7	RC20GF470K	RESISTOR, FIXED, COMPOSITION	R215, 216
2	6	RC20GF271K	RESISTOR, FIXED, COMPOSITION	R214, 217
X	5	PX-104-3-.034	INSULATION SLEEVING	RED
X	4	PX-104-1-.034	INSULATION SLEEVING	BLK
X	3	WL-100-7	WIRE, BUSS	
2	2	TE-108-1	STANDOFF, RIVET TYPE	
12	1	TE-168-4-B	TERMINAL, MINIATURE	

REQ.	ITEM	PART NO.	M. GELLMAN	DESCRIPTION	SYMBOL
SEE STAGE *1			THE TECHNICAL MATERIEL CORP. MAMARONECK, NEW YORK		
SEE STAGE *1			TERMINAL BOARD AND COMPONENT ASSEMBLY		
MATERIAL					
TYPE & TEMPER			DRAWN CHECKED FINAL APPROVAL		
HEAT TREAT. SPEC.			ELEC. DES. APP. MECH. DES. APP.		
FINISH & SPEC. NO.			A-2506 C		

C	IT.7 WAS RC20GF330K	11.12.64	12920	NB	@	
B	EXTENSIVE CHG. SEE E.MN#	3-17-64	11052	A.M.	@	mp.
SYM	DESCRIPTION	DATE	CH. NO.	DRAFTS	CHECKER	ENG. APP.

UNLESS OTHERWISE SPECIFIED:		SCALE:	
DIMENSIONS ARE IN INCHES		MAXIMUM ALLOWABLE TOLERANCES HAVE BEEN DETERMINED AND ANY DEVIATIONS WILL BE CAUSE FOR REJECTION.	
TOLERANCES ON FRACTIONS ± 1/64 DECIMALS ± .005 ANGLES ± 1/2°		REMOVE ALL BURRS AND SHARP EDGES	
REQ. PER UNIT	GPR-92	MODEL	SECTION
		ASS'Y. NO.	DATE
		USED ON	